



Central Pollution Control Board

Air Quality Status for Delhi & NCR

Dated – January 16, 2022



Current Air Quality Status:

Air Quality Index (AQI) (Average of past 24 hours)

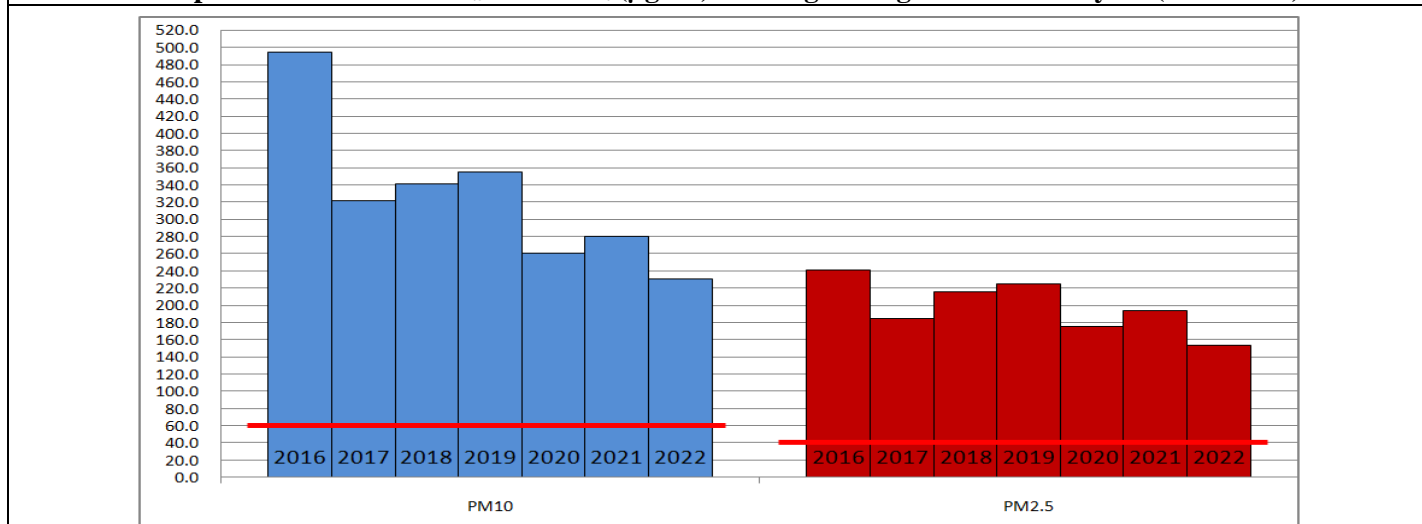
	Air Quality	AQI Value	Prominent Pollutant
Delhi	Poor	264↑	PM _{2.5}
Faridabad	Poor	299↓	PM _{2.5}
Ghaziabad	Poor	259↓	PM _{2.5}
Greater Noida	Poor	237↓	PM _{2.5}
Gurugram	Moderate	181↓	PM ₁₀ , PM _{2.5}
Noida	Poor	238↓	PM _{2.5}

*Data available for 35 stations in Delhi today. # ↓, ↑ arrows indicate increase/decrease as compared to value on the previous day

Comparative status of AQI - Delhi from 01 January to 16 January 2016-2022

Category	Year	2016	2017	2018	2019	2020	2021	2022	2016	2017	2018	2019	2020	2021	2022
		No. of days	16	16	16	16	16	16	16	2016	2017	2018	2019	2020	2021
Good (0–50)		0	0	0	0	0	0	0							
Satisfactory (51–100)		0	0	0	0	0	0	2	0	0	0	0	0	2	5
Moderate (101–200)		0	0	0	0	0	2	3							
Poor (201–300)		2	4	3	4	8	6	4							
Very Poor (301–400)		11	12	11	7	6	3	6	16	16	16	16	16	14	11
Severe (>401)		3	0	2	5	2	5	1							

Comparative status of PM_{2.5} and PM₁₀ (µg/m³) running average – Till January 15 (2016-2022)



Hotspots for Today:

*Details given overleaf

Delhi	Anand Vihar, Jahangirpuri, Dr.Karni Singh Shooting Range, ITO, Nehru Nagar	Gurugram	Sector-51, Teri Gram
Faridabad	New Industrial Area, Sector-30	Greater Noida	Knowledge Park – V
Ghaziabad	Sanjay Nagar, Loni	Noida	Sector -62, Sector - 1

Forecast by IITM:

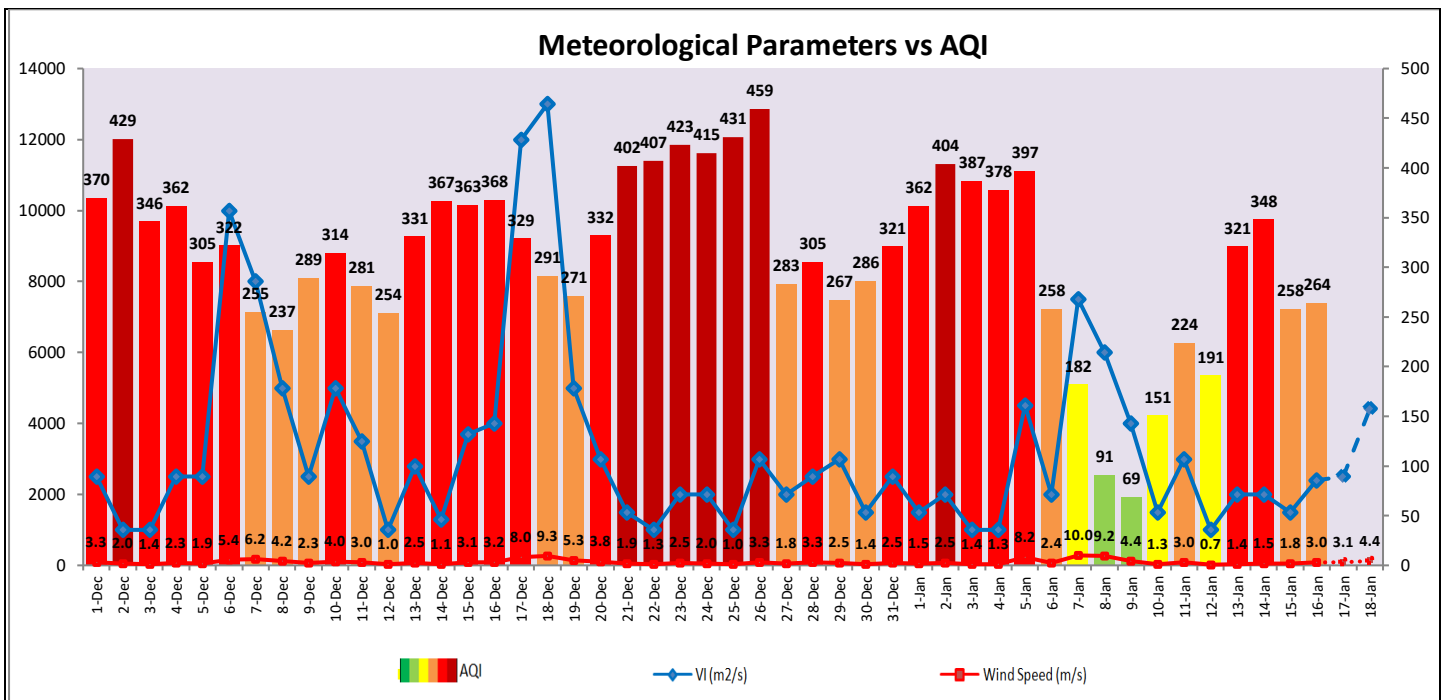
Parameters	January 17, 2022		January 18, 2022-January 19, 2022	
	Concentration	AQI Category	Concentration	AQI Category
PM ₁₀	155	Moderate	189	Moderate
PM _{2.5}	98	Poor	120	Poor

Wind Forecast for Delhi:

	Wind speed (at surface) in km/h		Wind speed (at 900 m) in km/h	Wind Direction	
	As per IMD (at 17:30 hrs.)	As per windy.com (at 16:00 hrs.)	As per windy.com (at 16:00hrs)	As per IMD (at 17:30hrs.)	As per windy.com at 900m
January 17, 2022	08	07	13	WNW	NW
January 18, 2022	05	07	21	W	NW
January 19, 2022	05	04	17	NW	NW

IMD Alert for Tomorrow (17.01.2022):

The air quality over Delhi-NCT is likely to remain in Poor to lower end of Very Poor category on 17.01.2022. The predominant surface wind is likely to be coming from Northwest direction of Delhi having wind speed 05-18 kmph with partly cloudy sky, shallow to moderate fog in the morning and cold **day conditions at isolated places** on 17.01.2022. Ventilation index is likely to be 2,500 m²/s.



Hotspots for Today

City	Station Name	AQI value	Air Quality	Prominent Pollutant
Delhi	Anand Vihar, Delhi - DPCC	360	Very Poor	PM _{2.5}
	Jahangirpuri, Delhi - DPCC	354	Very Poor	PM _{2.5}
	Dr.Karni Singh Shooting Range, Delhi - DPCC	333	Very Poor	PM _{2.5}
	ITO, Delhi - CPCB	329	Very Poor	PM _{2.5}
	Nehru Nagar, Delhi - DPCC	327	Very Poor	PM _{2.5}
Faridabad	New Industrial Town, Faridabad - HSPCB	334	Very Poor	PM _{2.5}
	Sector 30, Faridabad - HSPCB	299	Poor	PM _{2.5}
Gurugram	Teri Gram, Gurugram - HSPCB	199	Moderate	PM _{2.5}
	Sector-51, Gurugram - HSPCB	180	Moderate	PM ₁₀
Ghaziabad	Loni, Ghaziabad - UPPCB	315	Very Poor	PM _{2.5}
	Sanjay Nagar, Ghaziabad - UPPCB	262	Poor	PM _{2.5}
Greater Noida	Knowledge Park - V, Greater Noida - UPPCB	236	Poor	PM _{2.5}
Noida	Sector-1, Noida - UPPCB	260	Poor	PM _{2.5}
	Sector - 62, Noida - IMD	236	Poor	PM _{2.5}