



Central Pollution Control Board

Air Quality Status for Delhi & NCR

Dated – December 15, 2022



Current Air Quality Status:

Air Quality Index (AQI) (Average of past 24 hours)

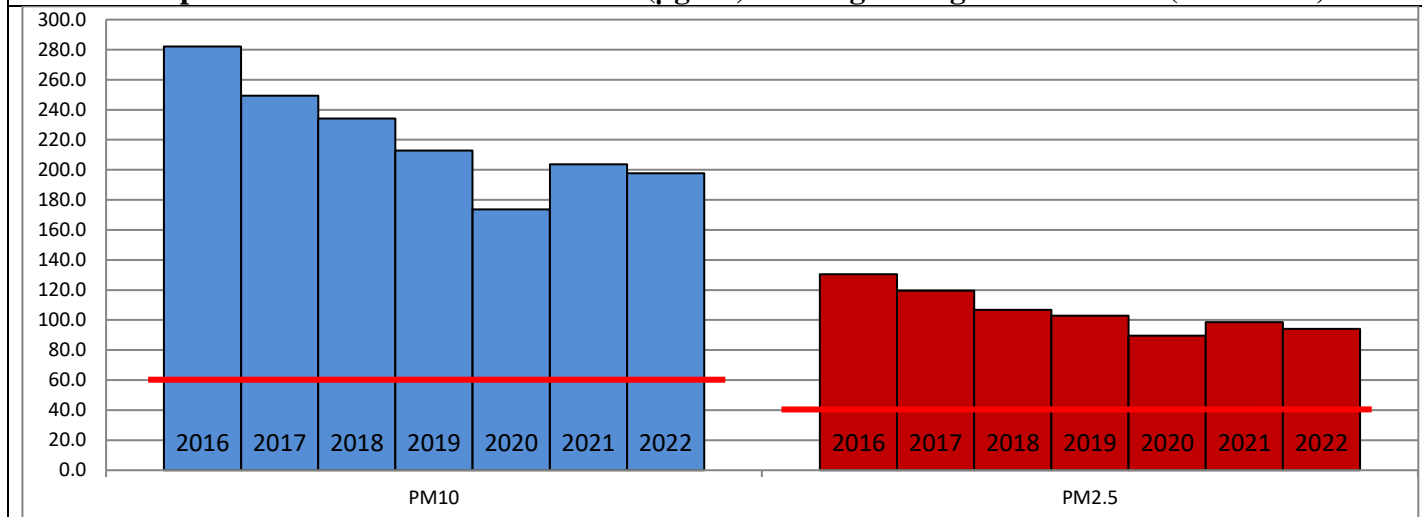
	Air Quality	AQI Value	Prominent Pollutant
Delhi	Moderate	189 ↑	PM _{2.5}
Faridabad	Moderate	191 ↑	PM _{2.5}
Ghaziabad	Moderate	150 ↑	PM ₁₀
Greater Noida	Moderate	171 ↑	PM ₁₀
Gurugram	Poor	228 ↑	PM _{2.5}
Noida	Moderate	137 ↑	PM _{2.5}

*Data available for 37 stations in Delhi today. # ↑ ↓ arrows indicate a decrease/increase as compared to the value on the previous day.

Comparative status of AQI - Delhi from 01 January to 15 December 2016-2022

Category	Year	2016	2017	2018	2019	2020	2021	2022	2016	2017	2018	2019	2020	2021	2022
	No. of days	338	349	349	349	350	349	349							
Good (0–50)		0	2	0	2	5	1	3							
Satisfactory (51–100)		24	45	53	59	95	81	65	110	151	159	180	227	197	163
Moderate (101–200)		86	104	106	119	127	115	95							
Poor (201–300)		119	111	113	102	68	75	129							
Very Poor (301–400)		87	79	63	48	43	59	52	228	198	190	169	123	152	186
Severe (>401)		22	8	14	19	12	18	5							

Comparative status of PM₁₀ and PM_{2.5} (µg/m³) running average – Till Dec 14 (2016-2022)



Hotspots for Today:

*Details given overleaf

Delhi	NSIT Dwarka, Bawana, Nehru Nagar, Mundka, Rohini	Ghaziabad	Vasundhara
Faridabad	Sector-30, New Industrial Town	Greater Noida	-
Gurugram	Teri Gram, Sector-51	Noida	Sector – 62

Forecast by IITM (Delhi):

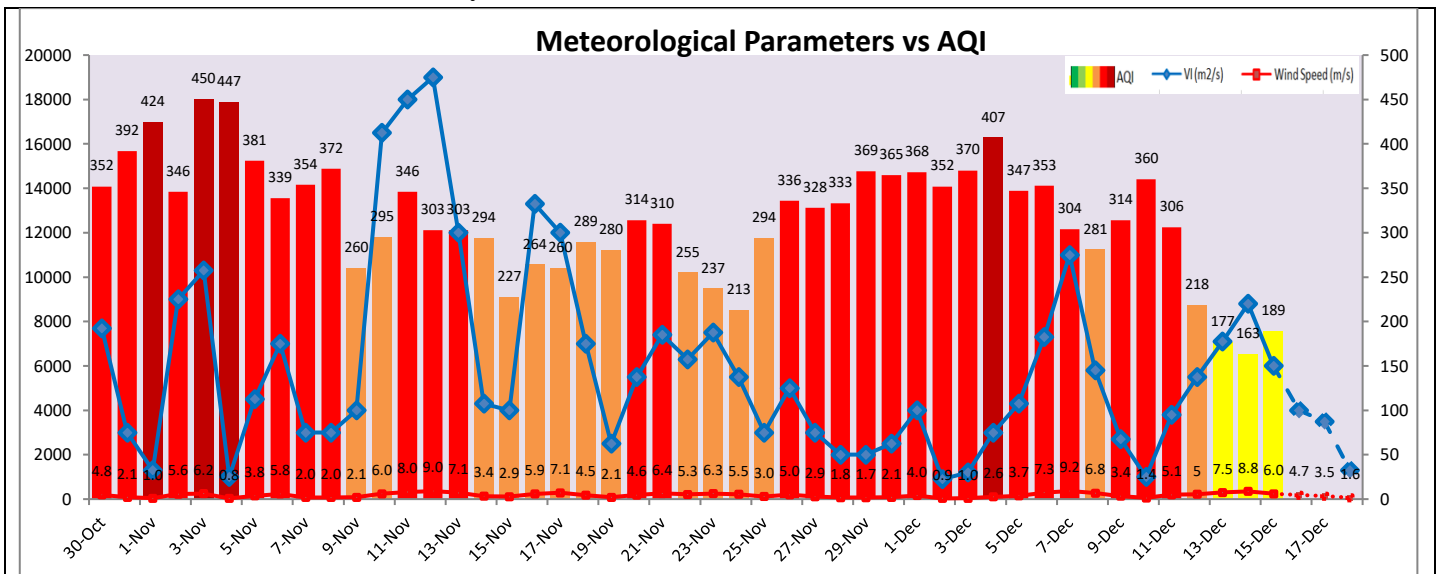
	Dec 16, 2022		Dec 17, 2022- Dec 18, 2022	
	Concentration	AQI Category	Concentration	AQI Category
PM ₁₀	174	Moderate	205	Moderate
PM _{2.5}	80	Moderate	95	Poor

Wind Forecast for Delhi:

	Wind speed (at surface) in km/h		Wind speed (at 900 m) in km/h	Wind Direction	
	As per IMD (range)	As per windy.com (at 16:00 hrs.)	As per windy.com (at 16:00hrs)	As per IMD	As per windy.com at 900m
Dec 16, 2022	04-08	11	26	WNW	NW
Dec 17, 2022	04-08	08	26	NW	NW
Dec 18, 2022	-	07	21	CALM	NW

IMD Alert for Tomorrow (16.12.2022):

The air quality is likely to deteriorate and reach in Poor category on 16.12.2022. The predominant surface wind is likely to be coming from West-Northwest direction in Delhi with wind speed 04-08 kmph and clear sky tomorrow. Ventilation index is likely to be 4,000 m²/s.



Hotspots for Today

City	Station Name	AQI value	Air Quality	Prominent Pollutant
Delhi	NSIT Dwarka, Delhi - CPCB	270	Poor	PM _{2.5}
	Bawana, Delhi - DPCC	247	Poor	PM _{2.5}
	Nehru Nagar, Delhi - DPCC	246	Poor	PM _{2.5}
	Mundka, Delhi - DPCC	226	Poor	PM _{2.5}
	Rohini, Delhi - DPCC	224	Poor	PM _{2.5}
Faridabad	Sector 30, Faridabad - HSPCB	228	Poor	PM _{2.5}
	New Industrial Town, Faridabad - HSPCB	205	Poor	PM ₁₀
Gurugram	Teri Gram, Gurugram - HSPCB	266	Poor	PM _{2.5}
	Sector-51, Gurugram - HSPCB	240	Poor	PM _{2.5}
Ghaziabad	Vasundhara, Ghaziabad - UPPCB	192	Moderate	PM ₁₀
Noida	Sector - 62, Noida - IMD	173	Moderate	PM _{2.5}