



Central Pollution Control Board

Air Quality Status for Delhi & NCR

Dated – November 15, 2022



Current Air Quality Status:

Air Quality Index (AQI) (Average of past 24 hours)

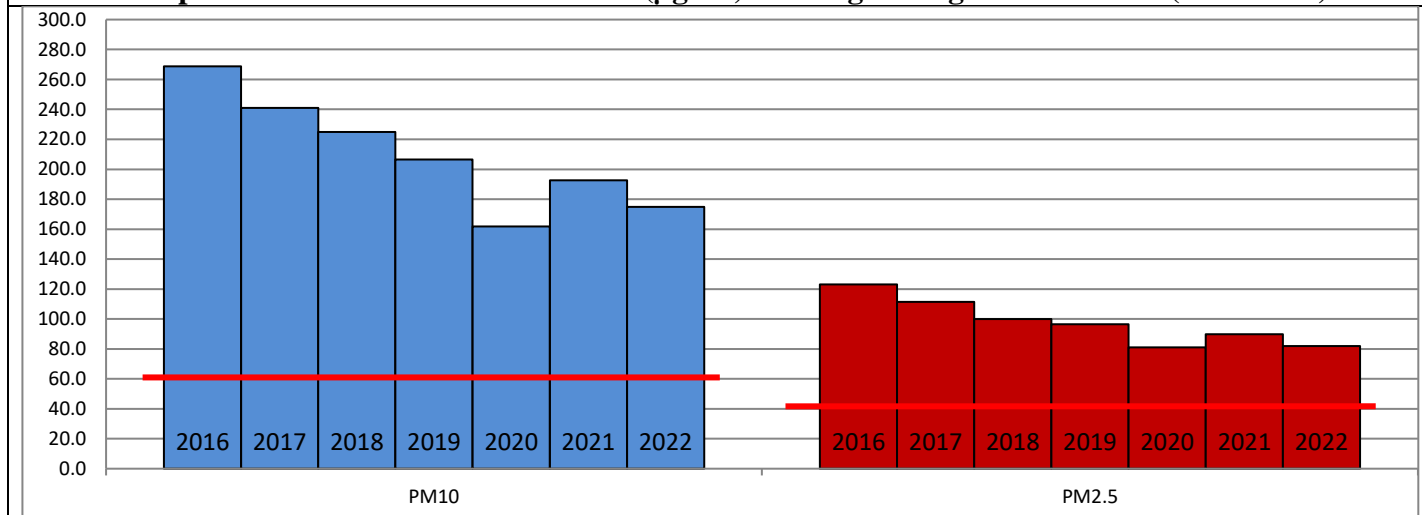
	Air Quality	AQI Value	Prominent Pollutant
Delhi	Poor	227 ↓	PM _{2.5} , O ₃
Faridabad	Poor	262 ↓	PM _{2.5}
Ghaziabad	Moderate	172 ↓	PM _{2.5}
Greater Noida	Poor	212 ↓	PM _{2.5} , PM ₁₀
Gurugram	Poor	217 ↓	PM _{2.5}
Noida	Moderate	169 ↓	PM _{2.5}

*Data available for 37 stations in Delhi today. # ↓ ↑ arrows indicate a decrease/increase as compared to the value on the previous day.

Comparative status of AQI - Delhi from 01 January to 15 November 2016-2022

Category	Year	2016	2017	2018	2019	2020	2021	2022	2016	2017	2018	2019	2020	2021	2022
	No. of days	308	319	319	319	320	319	319							
Good (0–50)		0	2	0	2	5	1	3							
Satisfactory (51–100)		24	45	53	58	95	81	65	110	150	158	175	224	197	160
Moderate (101–200)		86	103	105	115	124	115	92							
Poor (201–300)		116	102	105	90	56	69	119	198	169	161	144	96	122	159
Very Poor (301–400)		64	59	44	38	30	40	36							
Severe (>401)		18	8	12	16	10	13	4							

Comparative status of PM₁₀ and PM_{2.5} (µg/m³) running average – Till Nov 13 (2016-2022)



Hotspots for Today:

*Details given overleaf

Delhi	NSIT Dwarka, Shadipur, Alipur, Narela, Sonia Vihar	Ghaziabad	Loni, Vasundhara
Faridabad	Sector- 11, New Industrial Town	Greater Noida	Knowledge Park-V
Gurugram	Teri Gram	Noida	Sector – 62

Forecast by IITM (Delhi):

	Nov 16, 2022		Nov 17, 2022- Nov 18, 2022	
	Concentration	AQI Category	Concentration	AQI Category
PM ₁₀	212	Moderate	233	Moderate
PM _{2.5}	111	Poor	123	Very Poor

Wind Forecast for Delhi:

	Wind speed (at surface) in km/h		Wind speed (at 900 m) in km/h	Wind Direction	
	As per IMD (range)	As per windy.com (at 16:00 hrs.)	As per windy.com (at 16:00hrs)	As per IMD	As per windy.com at 900m
Nov 16, 2022	10-16	09	31	NW	NW
Nov 17, 2022	08-16	09	33	NW	NW
Nov 18, 2022	04-08	10	18	N/NW	NW

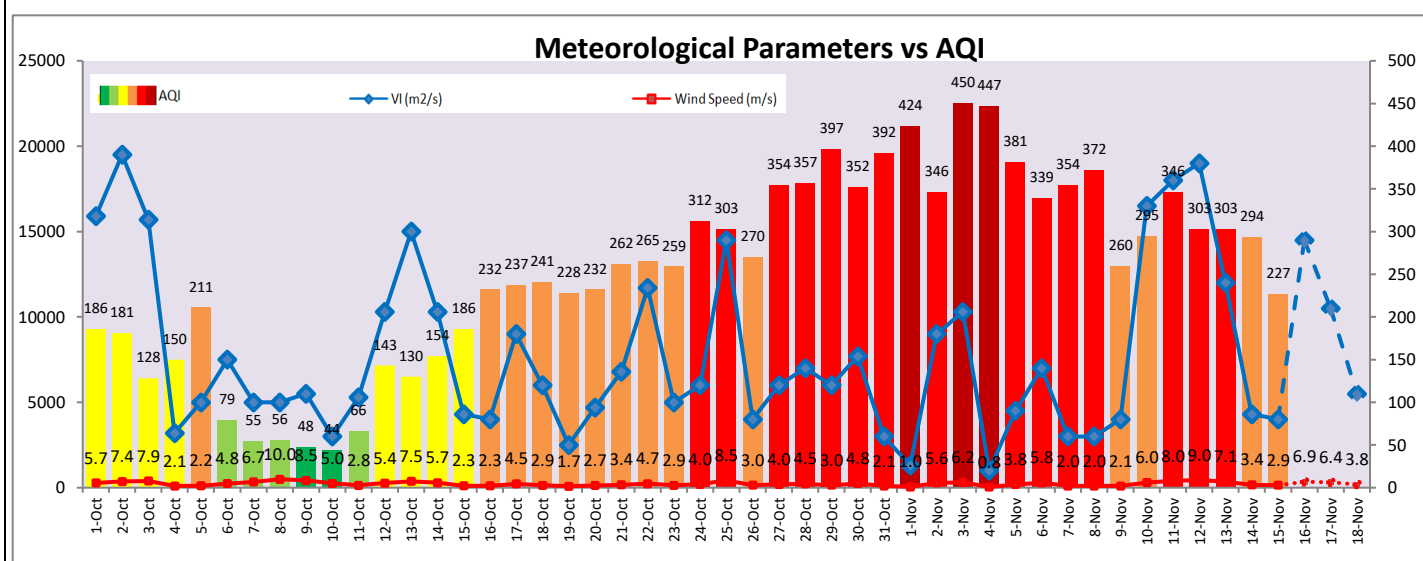
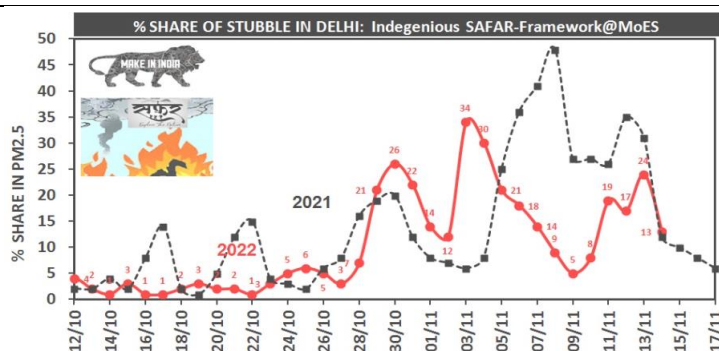
IMD Alert for Tomorrow (16.11.2022):

The air quality is likely to remain in Poor category on 16.11.2022 and 17.11.2022. The predominant surface wind is likely to be coming from Northwest direction in Delhi with wind speed 10-16 kmph, mainly clear sky and mist in the morning tomorrow. Ventilation index is likely to be 14,500 m²/s.

Active Fire Events (AFE):

Date	Punjab		Haryana	
	Nos. on the day	Total since September 15	Nos. on the day	Total since September 15
14.11.2022	4	45323	7	3128
14.11.2021	2541	65404	195	5595

* As per IITM, the impact of stubble burning is ~13%.



Hotspots for Today

City	Station Name	AQI value	Air Quality	Prominent Pollutant
Delhi	Shadipur, Delhi - CPCB	306	Very Poor	PM _{2.5}
	NSIT Dwarka, Delhi - CPCB	287	Poor	PM _{2.5}
	Alipur, Delhi - DPCC	278	Poor	O ₃
	Narela, Delhi - DPCC	269	Poor	PM _{2.5}
	Sonia Vihar, Delhi - DPCC	267	Poor	PM _{2.5}
Faridabad	Sector 11, Faridabad - HSPCB	298	Poor	PM _{2.5}
	New Industrial Town, Faridabad - HSPCB	272	Poor	PM ₁₀
Gurugram	Teri Gram, Gurugram - HSPCB	268	Poor	PM _{2.5}
Ghaziabad	Vasundhara, Ghaziabad - UPPCB	209	Poor	PM _{2.5}
	Loni, Ghaziabad - UPPCB	182	Moderate	PM _{2.5}
Greater Noida	Knowledge Park - V, Greater Noida - UPPCB	213	Poor	PM ₁₀
Noida	Sector - 62, Noida - IMD	230	Poor	PM _{2.5}