



# Central Pollution Control Board

Air Quality Status for Delhi & NCR

Dated – November 15, 2021



## Current Air Quality Status:

### Air Quality Index (AQI) (Average of past 24 hours)

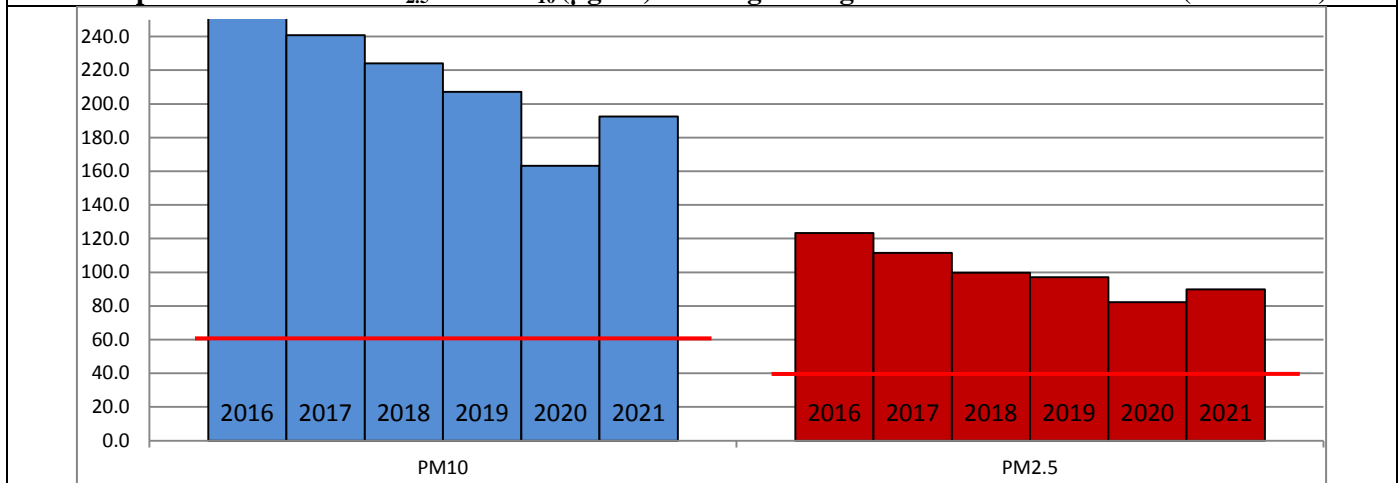
	Air Quality	AQI Value	Prominent Pollutant
Delhi	Very Poor	353↑	PM <sub>10</sub> , PM <sub>2.5</sub>
Faridabad	Very Poor	319↑	PM <sub>10</sub>
Ghaziabad	Very Poor	335↑	PM <sub>2.5</sub>
Greater Noida	Very Poor	317↑	PM <sub>2.5</sub>
Gurugram	Very Poor	332↑	PM <sub>2.5</sub>
Noida	Very Poor	338↑	PM <sub>2.5</sub>

\*Data available for 33 stations in Delhi today. # ↓, ↑ arrows indicate increase/decrease as compared to value on the previous day

### Comparative status of AQI - Delhi from 01 January to 15 November 2016-2021

Category	Year No. of days	2016	2017	2018	2019	2020	2021	2016	2017	2018	2019	2020	2021
		308	319	319	319	320	319	2016	2017	2018	2019	2020	2021
Good (0-50)	0	2	0	2	5	1							
Satisfactory (51-100)	25	45	53	58	95	72	108	150	158	175	224	197	
Moderate (101-200)	83	103	105	115	124	124							
Poor (201-300)	116	102	105	90	56	69							
Very Poor (301-400)	66	59	44	38	30	40	200	169	161	144	96	122	
Severe (>401)	18	8	12	16	10	13							

### Comparative status of PM<sub>2.5</sub> and PM<sub>10</sub> (µg/m<sup>3</sup>) running average - Delhi till November 14 (2016-2021)



\* The PM values are 24 hourly averages (6 am to 6 am)

### Hotspots for Today:

\*Details given overleaf

Delhi	Shadipur, Wazirpur, Alipur, Anand Vihar, Bawana	Gurugram	Vikas Sadan, Sector-51
Ghaziabad	Loni, Vasundhara	Noida	Sector – 62, Sector –116

### Forecast by IITM:

Parameters	November 16, 2021		November 17, 2021– November 18, 2021	
	Concentration	AQI Category	Concentration	AQI Category
PM <sub>10</sub>	314	Poor	371	Very Poor
PM <sub>2.5</sub>	176	Very Poor	208	Very Poor

**Wind Forecast for Delhi:**

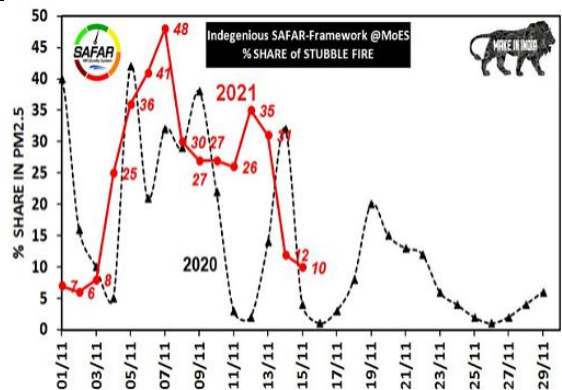
Dates	Wind speed (at surface) in km/h		Wind speed (at 900 m) in km/h	Wind Direction	
	As per IMD (at 17:30 hrs.)	As per windy.com (at 16:00 hrs.)	As per windy.com (at 16:00hrs)	As per IMD (at 17:30hrs.)	As per windy.com at 900m
November 16, 2021	04	10	22	N	NW
November 17, 2021	08	03	03	N	N
November 18, 2021	06	04	09	W	NW

**IMD Alert for Tomorrow (16.11.2021):**

The air quality is likely to deteriorate marginally but remain in Very Poor category tomorrow. The predominant surface wind is likely to remain calm in the morning hours and coming from North direction of Delhi during daytime with wind speed 04-08 kmph, mainly clear sky and mist/shallow fog in the morning. Ventilation index is likely to be 3,000 m<sup>2</sup>/s.

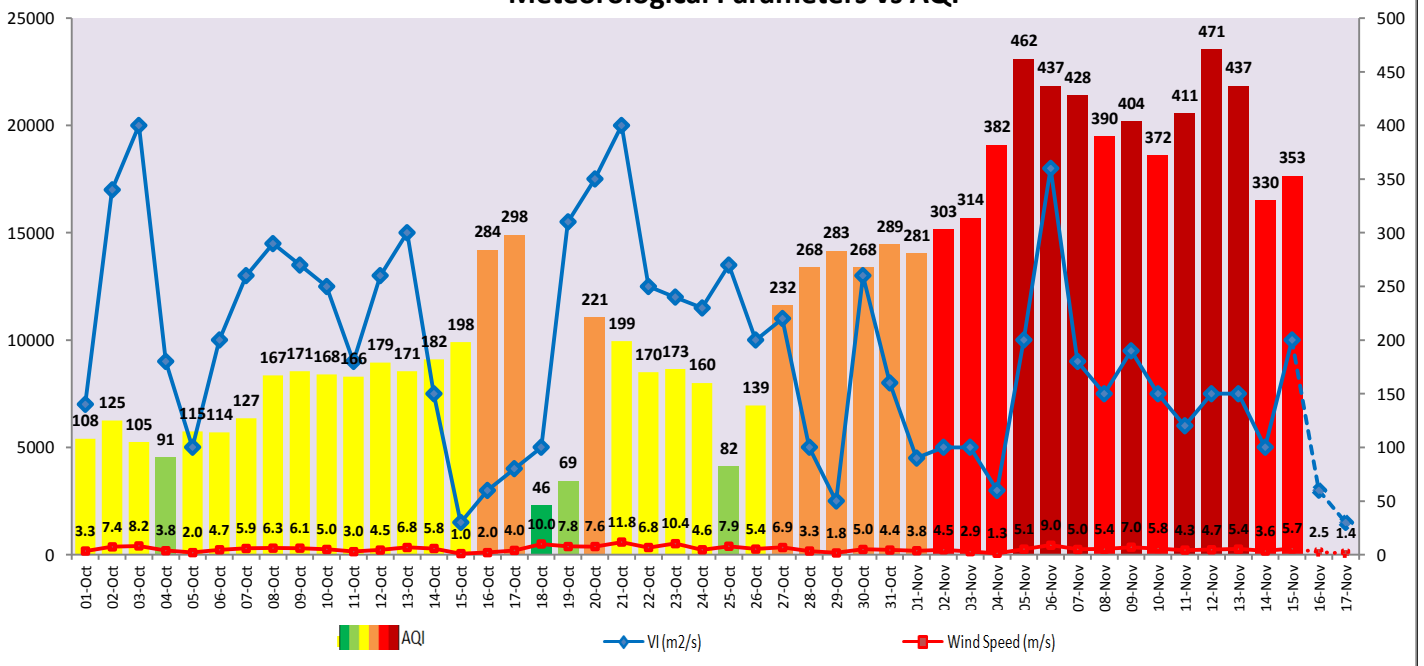
**Active Fire Events (AFEs)**

Date	Punjab		Haryana	
	Nos. on the day	Total since September 21	Nos. on the day	Total since September 21
14.11.2021	2541	65404	195	5595
14.11.2020	307	80058	35	3670



The contribution of biomass burning in PM<sub>2.5</sub> concentration is likely to be less than 5% on 15.11.2021 as winds are not favourable for transportation of pollutants.

**Meteorological Parameters vs AQI**



▪ **Hotspots for Today**

City	Station Name	AQI value	Air Quality	Prominent Pollutant
Delhi	Shadipur, Delhi - CPCB	399	Very Poor	PM <sub>10</sub>
	Wazirpur, Delhi - DPCC	396	Very Poor	PM <sub>10</sub>
	Alipur, Delhi - DPCC	390	Very Poor	PM <sub>2.5</sub>
	Anand Vihar, Delhi - DPCC	386	Very Poor	PM <sub>10</sub>
	Bawana, Delhi - DPCC	386	Very Poor	PM <sub>2.5</sub>
Gurugram	Vikas Sadan, Gurugram - HSPCB	356	Very Poor	PM <sub>2.5</sub>
	Sector-51, Gurugram - HSPCB	331	Very Poor	PM <sub>2.5</sub>
Ghaziabad	Loni, Ghaziabad - UPPCB	425	Severe	PM <sub>2.5</sub>
	Vasundhara, Ghaziabad - UPPCB	326	Very Poor	PM <sub>2.5</sub>
Noida	Sector-116, Noida - UPPCB	364	Very Poor	PM <sub>2.5</sub>
	Sector - 62, Noida - IMD	332	Very Poor	PM <sub>10</sub>