



Central Pollution Control Board

Air Quality Status for Delhi & NCR

Dated – October 15, 2022



Current Air Quality Status:

Air Quality Index (AQI) (Average of past 24 hours)

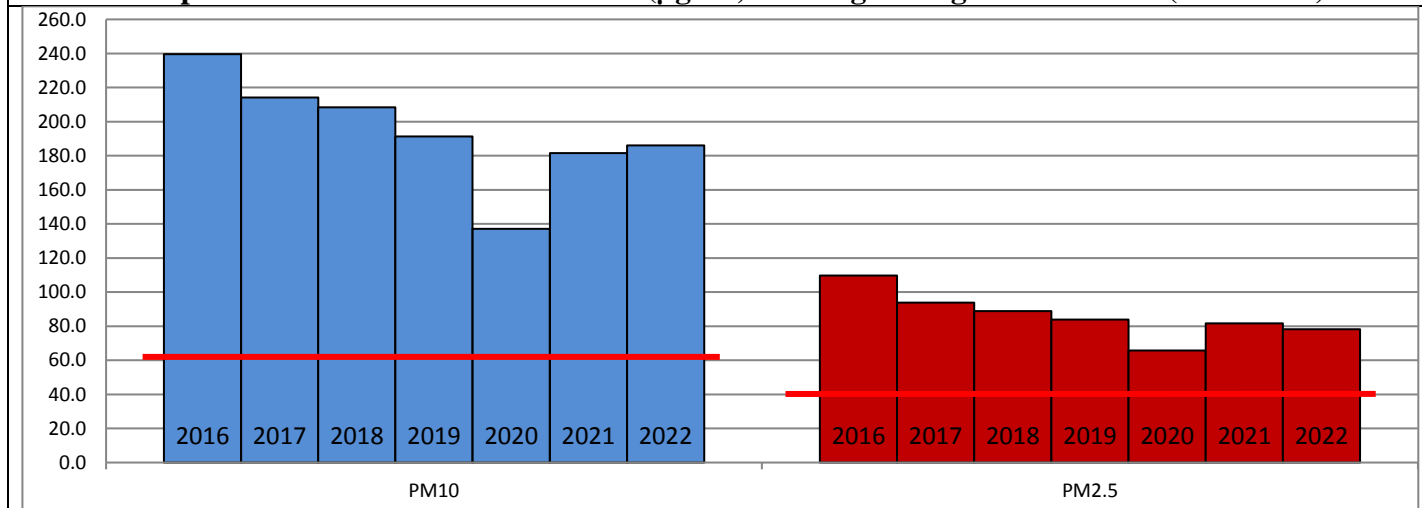
	Air Quality	AQI Value	Prominent Pollutant
Delhi	Moderate	186 ↓	PM ₁₀ , PM _{2.5} , O ₃
Faridabad	Moderate	199 ↓	PM ₁₀ , PM _{2.5} , O ₃
Ghaziabad	Moderate	194 ↓	PM ₁₀ , PM _{2.5}
Greater Noida	Moderate	179 ↓	O ₃
Gurugram	Poor	213 ↓	PM _{2.5}
Noida	Moderate	188 ↓	PM ₁₀ , PM _{2.5} , O _{3s}

*Data available for 32 stations in Delhi today. # ↓ ↑ arrows indicate a decrease/increase as compared to the value on the previous day.

Comparative status of AQI - Delhi from 01 January to 15 October 2016-2022

Category	Year	2016	2017	2018	2019	2020	2021	2022	2016	2017	2018	2019	2020	2021	2022
	No. of days	277	288	288	288	289	288	288							
Good (0–50)		0	2	0	2	5	0	3							
Satisfactory (51–100)		24	45	53	58	95	79	65	110	150	157	174	224	189	160
Moderate (101–200)		86	103	104	114	124	110	92							
Poor (201–300)		107	101	97	80	47	60	106							
Very Poor (301–400)		54	37	28	27	16	33	21	167	138	131	114	65	99	128
Severe (>401)		6	0	6	7	2	6	1							

Comparative status of PM₁₀ and PM_{2.5} (µg/m³) running average – Till Oct 12 (2016-2022)



Hotspots for Today:

*Details given overleaf

Delhi	NSIT Dwarka, Shadipur, Jawaharlal Nehru Stadium, Pusa, Patparganj	Ghaziabad	Loni
Faridabad	Sector 30, Sector- 16A	Greater Noida	-
Gurugram	Sector-51, Teri Gram	Noida	Sector-1, Sector - 116

Forecast by IITM (Delhi):

	Oct 16, 2022		Oct 17, 2022- Oct 18, 2022	
	Concentration	AQI Category	Concentration	AQI Category
PM ₁₀	179	Moderate	196	Moderate
PM _{2.5}	83	Moderate	91	Poor

Wind Forecast for Delhi:

	Wind speed (at surface) in km/h		Wind speed (at 900 m) in km/h	Wind Direction	
	As per IMD (range)	As per windy.com (at 16:00 hrs.)	As per windy.com (at 16:00hrs)	As per IMD	As per windy.com at 900m
Oct 16, 2022	05-12	07	15	Variable	W
Oct 17, 2022	04-12	08	18	SE/N	W
Oct 18, 2022	05-15	02	14	S/SE	W

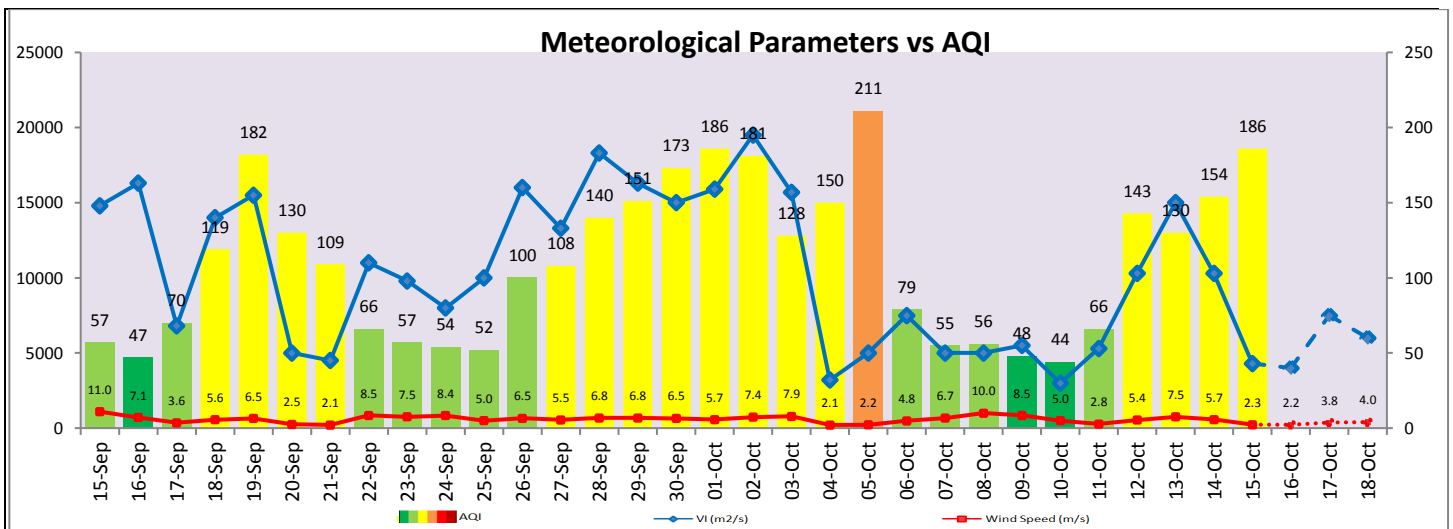
IMD Alert for Tomorrow (16.10.2022):

The overall air quality over Delhi is likely to deteriorate but remain in Poor category on 16.10.2022 & 17.10.2022. The predominant surface wind is likely to be coming from Southeast/North directions in Delhi with wind speed 05-12 kmph and mainly clear sky tomorrow. Ventilation index is likely to be 5,000 m²/s.

Active Fire Events (AFEs):

Date	Punjab		Haryana	
	Nos. on the day	Total since September 15	Nos. on the day	Total since September 15
15.10.2022	169	1238	36	168
15.10.2021	660	1946	363	850

* As per IMD, the impact of stubble burning is negligible.



Hotspots for Today

City	Station Name	AQI value	Air Quality	Prominent Pollutant
Delhi	NSIT Dwarka, Delhi - CPCB	298	Poor	PM _{2.5}
	Shadipur, Delhi - CPCB	295	Poor	PM _{2.5}
	Jawaharlal Nehru Stadium, Delhi - DPCC	240	Poor	PM _{2.5}
	Pusa, Delhi - DPCC	236	Poor	PM ₁₀
	Patparganj, Delhi - DPCC	210	Poor	O ₃
Faridabad	Sector 30, Faridabad - HSPCB	218	Poor	PM _{2.5}
	Sector- 16A, Faridabad - HSPCB	202	Poor	O ₃
Gurugram	Sector-51, Gurugram - HSPCB	271	Poor	PM _{2.5}
	Teri Gram, Gurugram - HSPCB	217	Poor	PM _{2.5}
Ghaziabad	Loni, Ghaziabad - UPPCB	251	Poor	PM _{2.5}
Noida	Sector - 125, Noida - UPPCB	225	Poor	PM ₁₀
	Sector-116, Noida - UPPCB	195	Moderate	PM _{2.5}