



# Central Pollution Control Board

## Air Quality Status for Delhi &NCR

Dated – February 15, 2022



### Current Air Quality Status:

#### Air Quality Index (AQI) (Average of past 24 hours)

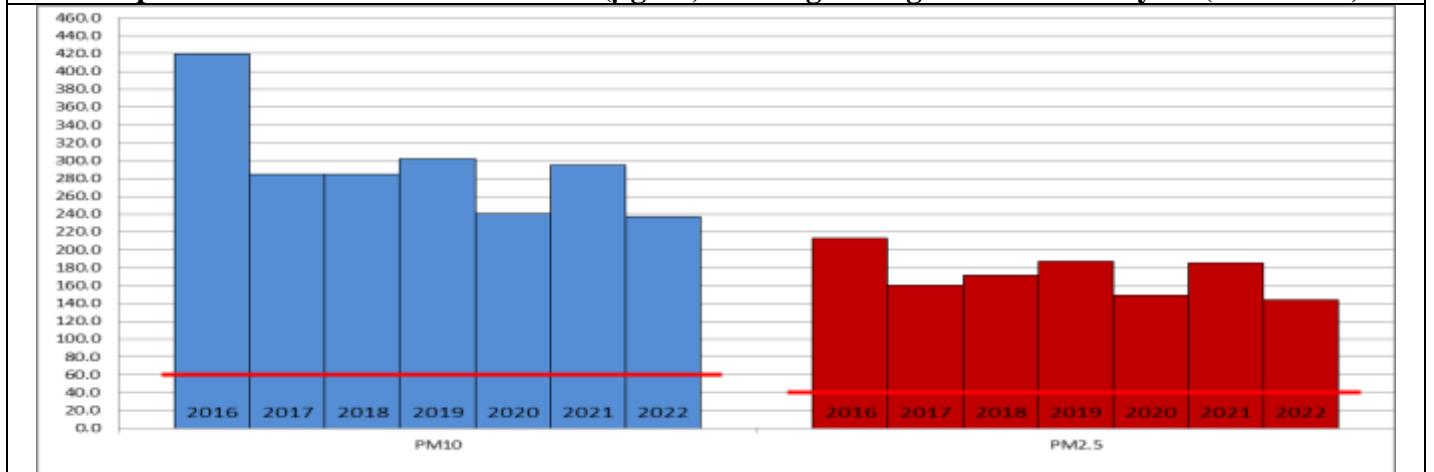
	Air Quality	AQI Value	Prominent Pollutant
Delhi	Poor	221↓	PM <sub>10</sub> , PM <sub>2.5</sub>
Faridabad	Very Poor	326↑	PM <sub>10</sub>
Ghaziabad	Poor	264↓	PM <sub>10</sub>
Greater Noida	Moderate	192↓	PM <sub>10</sub>
Gurugram	Moderate	192↓	PM <sub>10</sub> , PM <sub>2.5</sub>
Noida	Poor	202↓	PM <sub>10</sub> , PM <sub>2.5</sub>

\*Data available for 37 stations in Delhi today. # ↓ ↑ arrows indicate increase/decrease as compared to value on the previous day

#### Comparative status of AQI - Delhi from 01 January to 15 February 2016-2022

Category	Year	2016	2017	2018	2019	2020	2021	2022	2016	2017	2018	2019	2020	2021	2022
	No. of days	46	46	46	46	46	46	46							
Good (0–50)		0	0	0	0	0	0	0							
Satisfactory (51–100)		0	0	0	0	0	0	2	0	3	4	5	5	4	9
Moderate (101–200)		0	3	4	5	5	4	7							
Poor (201–300)		8	19	18	13	24	11	20							
Very Poor (301–400)		32	24	21	21	15	25	16	46	43	42	41	41	42	37
Severe (>401)		6	0	3	7	2	6	1							

#### Comparative status of PM<sub>2.5</sub> and PM<sub>10</sub> (µg/m<sup>3</sup>) running average – Till February 14 (2016-2022)



#### Hotspots for Today:

\*Details given overleaf

Delhi	Bawana, Narela, Dwarka-Sector 8, Lodhi Road, NSIT Dwarka	Gurugram	Teri Gram, Sector-51
		Greater Noida	Knowledge Park – V
Ghaziabad	Sanjay Nagar, Loni	Noida	Sector -116, Sector - 125

#### Forecast by IITM:

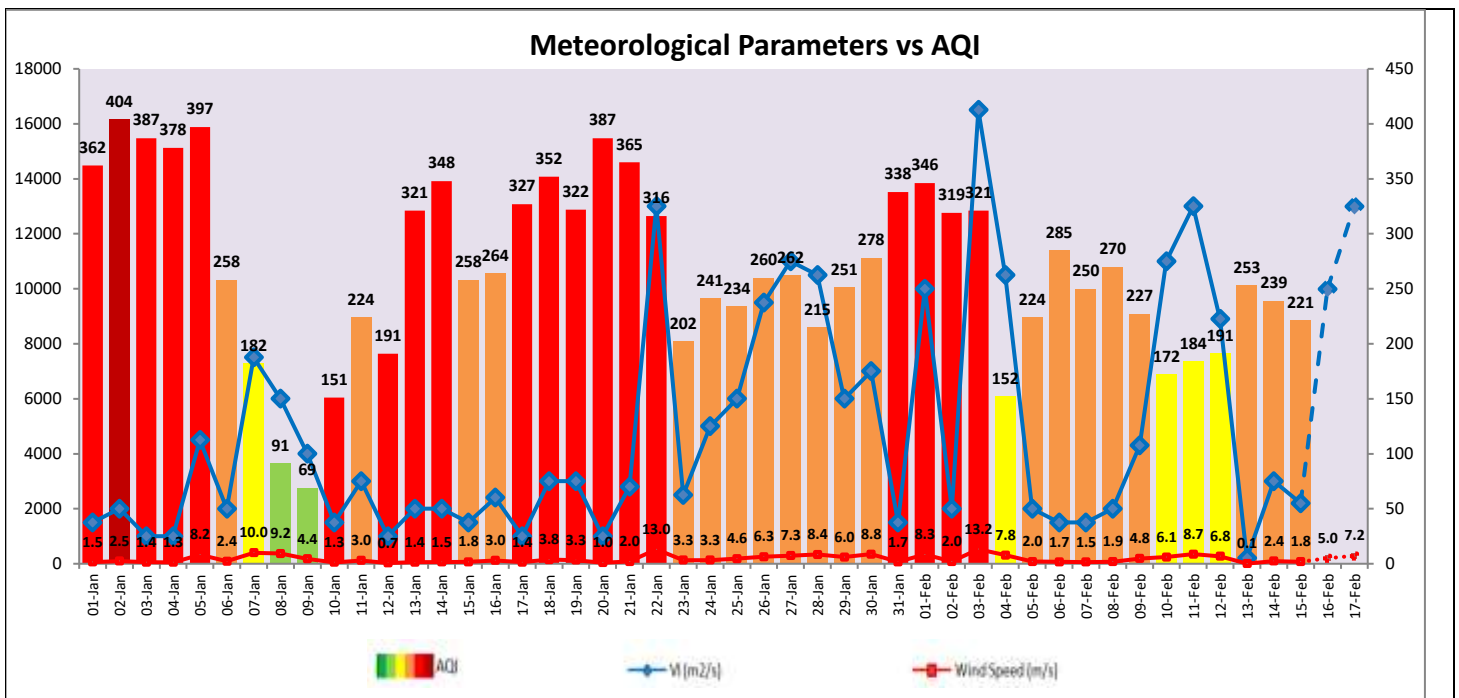
Parameters	February 16, 2022		February 17, 2022- February 18, 2022	
	Concentration	AQI Category	Concentration	AQI Category
PM <sub>10</sub>	212	Moderate	240	Moderate
PM <sub>2.5</sub>	111	Poor	126	Very Poor

**Wind Forecast for Delhi:**

	Wind speed (at surface) in km/h		Wind speed (at 900 m) in km/h	Wind Direction	
	As per IMD (at 17:30 hrs.)	As per windy.com (at 16:00 hrs.)	As per windy.com (at 16:00hrs)	As per IMD (at 17:30hrs.)	As per windy.com at 900m
February 16, 2022	12	07	23	NW	NW
February 17, 2022	15	06	26	NW	NW
February 18, 2022	16	06	14	NW	W

**IMD Alert for Tomorrow (16.02.2022):**

The air quality is likely to improve and remain in Poor to Moderate category tomorrow. The predominant surface wind is likely to be calm during morning hours and coming from Northwest direction of Delhi with wind speed up to 06-12 kmph, mainly clear sky and mist in the morning tomorrow. The ventilation index is likely to be 10,000 m<sup>2</sup>/s.



**Hotspots for Today**

City	Station Name	AQI value	Air Quality	Prominent Pollutant
Delhi	Bawana, Delhi - DPCC	330	Very Poor	PM <sub>10</sub>
	Narela, Delhi - DPCC	309	Very Poor	PM <sub>10</sub>
	Dwarka-Sector 8, Delhi - DPCC	286	Poor	PM <sub>10</sub>
	Lodhi Road, Delhi - IITM	285	Poor	PM <sub>2.5</sub>
	NSIT Dwarka, Delhi - CPCB	272	Poor	PM <sub>2.5</sub>
Gurugram	Sector-51, Gurugram - HSPCB	235	Poor	PM <sub>2.5</sub>
	Teri Gram, Gurugram - HSPCB	229	Poor	PM <sub>2.5</sub>
Ghaziabad	Loni, Ghaziabad - UPPCB	310	Very Poor	PM <sub>10</sub>
	Sanjay Nagar, Ghaziabad - UPPCB	251	Poor	PM <sub>10</sub>
Greater Noida	Knowledge Park - V, Greater Noida - UPPCB	215	Poor	PM <sub>10</sub>
Noida	Sector-116, Noida - UPPCB	237	Poor	PM <sub>10</sub>
	Sector - 125, Noida - UPPCB	231	Poor	PM <sub>2.5</sub>