



Central Pollution Control Board

Air Quality Status for Delhi & NCR

Dated – January 15, 2022



Current Air Quality Status:

Air Quality Index (AQI) (Average of past 24 hours)

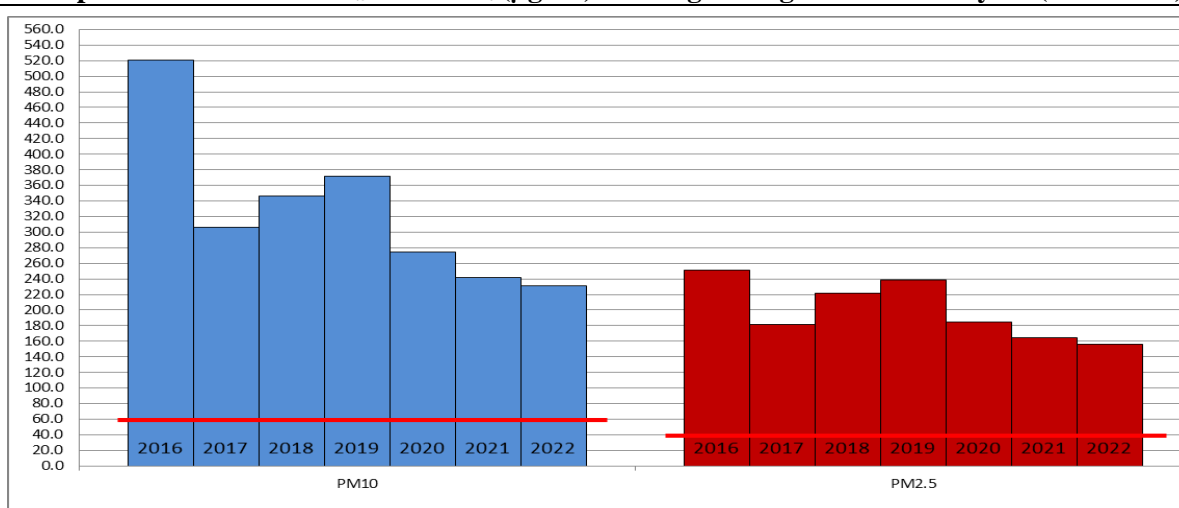
	Air Quality	AQI Value	Prominent Pollutant
Delhi	Poor	258↓	PM _{2.5}
Faridabad	Very Poor	306↓	PM _{2.5}
Ghaziabad	Poor	254↓	PM _{2.5}
Greater Noida	Poor	239↓	PM _{2.5}
Gurugram	Moderate	199↓	PM ₁₀ , PM _{2.5}
Noida	Poor	250↓	PM _{2.5}

*Data available for 35 stations in Delhi today. # ↓, ↑ arrows indicate increase/decrease as compared to value on the previous day

Comparative status of AQI - Delhi from 01 January to 15 January 2016-2022

Category	Year	2016	2017	2018	2019	2020	2021	2022	2016	2017	2018	2019	2020	2021	2022
		No. of days													
Good (0–50)		0	0	0	0	0	0	0							
Satisfactory (51–100)		0	0	0	0	0	0	2	0	0	0	0	0	2	5
Moderate (101–200)		0	0	0	0	0	2	3							
Poor (201–300)		1	4	2	4	7	6	3							
Very Poor (301–400)		11	11	11	6	6	3	6	15	15	15	15	15	13	10
Severe (>401)		3	0	2	5	2	4	1							

Comparative status of PM_{2.5} and PM₁₀ (µg/m³) running average – Till January 13 (2016-2022)



Hotspots for Today:

*Details given overleaf

Delhi	Nehru Nagar, Okhla Phase-2, Jahangirpuri, Anand Vihar, Mundka	Gurugram	Vikas Sadan, Teri Gram
Faridabad	New Industrial Area, Sector-30	Greater Noida	Knowledge Park – V
Ghaziabad	Sanjay Nagar, Loni	Noida	Sector -62, Sector - 1

Forecast by IITM:

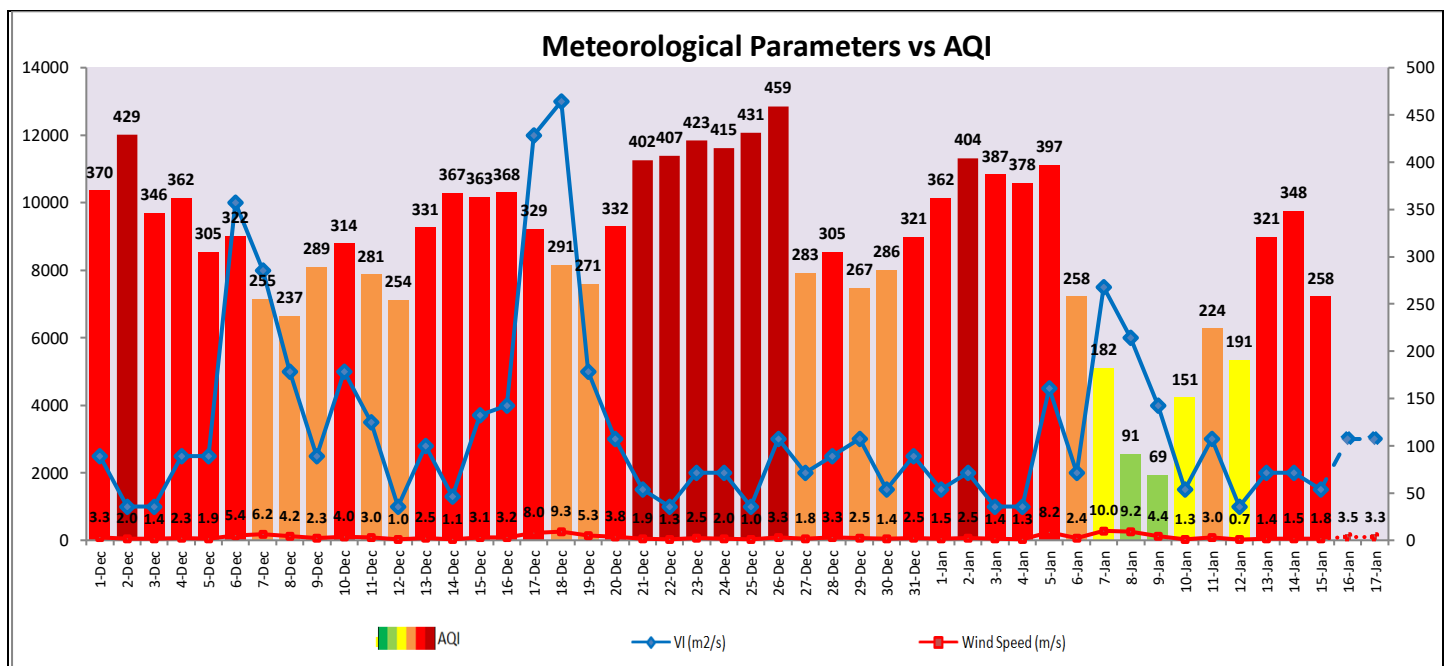
Parameters	January 16, 2022		January 17, 2022-January 18, 2022	
	Concentration	AQI Category	Concentration	AQI Category
PM ₁₀	254	Poor	233	Moderate
PM _{2.5}	145	Very Poor	133	Very Poor

▪ **Wind Forecast for Delhi:**

	Wind speed (at surface) in km/h		Wind speed (at 900 m) in km/h	Wind Direction	
	As per IMD (at 17:30 hrs.)	As per windy.com (at 16:00 hrs.)	As per windy.com (at 16:00hrs)	As per IMD (at 17:30hrs.)	As per windy.com at 900m
January 16, 2022	04	07	17	NW	N
January 17, 2022	04	08	15	NW	NW
January 18, 2022	-	07	29	CALM	NW

▪ **IMD Alert for Tomorrow (16.01.2022):**

The air quality is likely to remain in lower end of Very Poor category on 16.01.2022 and 17.01.2022. The predominant surface wind is likely to be coming from Northwest direction of Delhi with wind speed 04 kmph, partly cloudy sky and moderate to dense fog in the morning and cold wave conditions at isolated places. Ventilation index is likely to be 3,000 m²/s.



▪ **Hotspots for Today**

City	Station Name	AQI value	Air Quality	Prominent Pollutant
Delhi	Jahangirpuri, Delhi - DPCC	361	Very Poor	PM _{2.5}
	Nehru Nagar, Delhi - DPCC	354	Very Poor	PM _{2.5}
	Anand Vihar, Delhi - DPCC	352	Very Poor	PM _{2.5}
	Mundka, Delhi - DPCC	332	Very Poor	PM _{2.5}
	Okhla Phase-2, Delhi - DPCC	331	Very Poor	PM _{2.5}
Faridabad	New Industrial Town, Faridabad - HSPCB	372	Very Poor	PM _{2.5}
	Sector 30, Faridabad - HSPCB	311	Very Poor	PM _{2.5}
Gurugram	Vikas Sadan, Gurugram - HSPCB	244	Poor	PM _{2.5}
	Teri Gram, Gurugram - HSPCB	240	Poor	PM _{2.5}
Ghaziabad	Loni, Ghaziabad - UPPCB	258	Poor	PM _{2.5}
	Sanjay Nagar, Ghaziabad - UPPCB	254	Poor	PM _{2.5}
Greater Noida	Knowledge Park - V, Greater Noida - UPPCB	242	Poor	PM _{2.5}
Noida	Sector-1, Noida - UPPCB	277	Poor	PM _{2.5}
	Sector - 62, Noida - IMD	242	Poor	PM _{2.5}