



Central Pollution Control Board

Air Quality Status for Delhi & NCR

Dated – December 14, 2022



Current Air Quality Status:

Air Quality Index (AQI) (Average of past 24 hours)

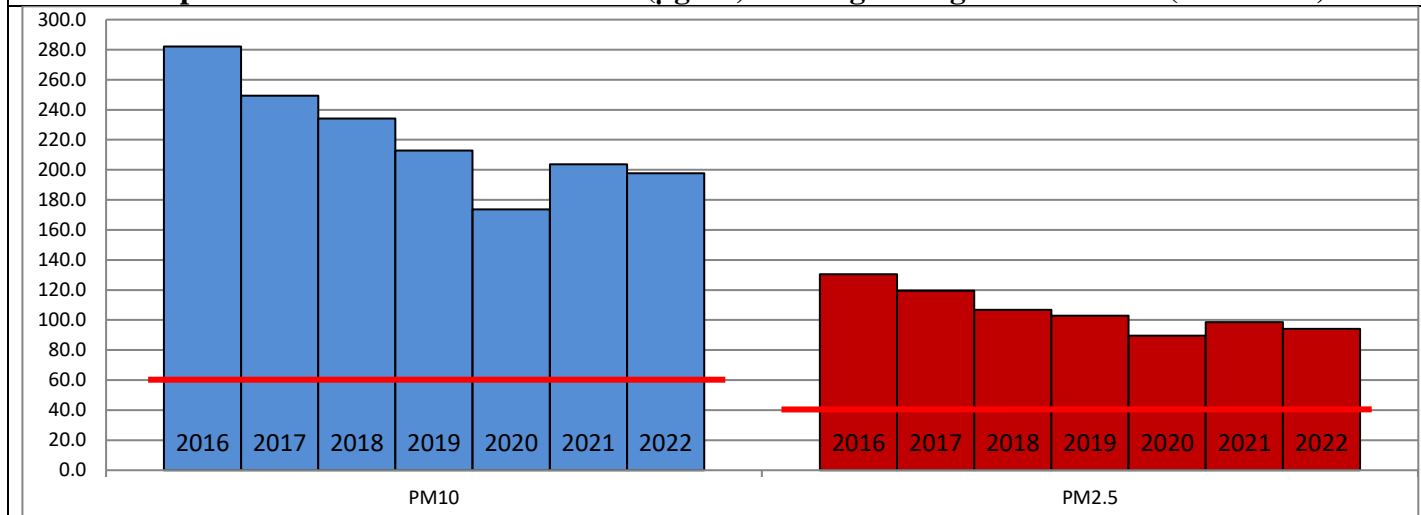
	Air Quality	AQI Value	Prominent Pollutant
Delhi	Moderate	163 ↓	PM _{2.5}
Faridabad	Moderate	157 ↓	PM ₁₀ , PM _{2.5}
Ghaziabad	Moderate	133 ↓	PM ₁₀
Greater Noida	Moderate	157 ↓	PM ₁₀
Gurugram	Moderate	155 ↓	PM ₁₀ , PM _{2.5}
Noida	Moderate	125 ↓	PM ₁₀

*Data available for 37 stations in Delhi today. # ↓ ↑ arrows indicate a decrease/increase as compared to the value on the previous day.

Comparative status of AQI - Delhi from 01 January to 14 December 2016-2022

Category	Year	2016	2017	2018	2019	2020	2021	2022	2016	2017	2018	2019	2020	2021	2022
	No. of days	337	348	348	348	349	348	348							
Good (0–50)		0	2	0	2	5	1	3							
Satisfactory (51–100)		24	45	53	59	95	81	65	110	151	159	180	227	197	162
Moderate (101–200)		86	104	106	119	127	115	94							
Poor (201–300)		119	110	112	101	67	75	129							
Very Poor (301–400)		86	79	63	48	43	58	52	227	197	189	168	122	151	186
Severe (>401)		22	8	14	19	12	18	5							

Comparative status of PM₁₀ and PM_{2.5} (µg/m³) running average – Till Dec 13 (2016-2022)



Hotspots for Today:

*Details given overleaf

Delhi	NSIT Dwarka, Shadipur, Vivek Vihar, Anand Vihar, Jahangirpuri	Ghaziabad	Vasundhara
Faridabad	Sector-30, New Industrial Town	Greater Noida	Knowledge Park-V
Gurugram	Vikas Sadan, Teri Gram	Noida	Sector – 62

Forecast by IITM (Delhi):

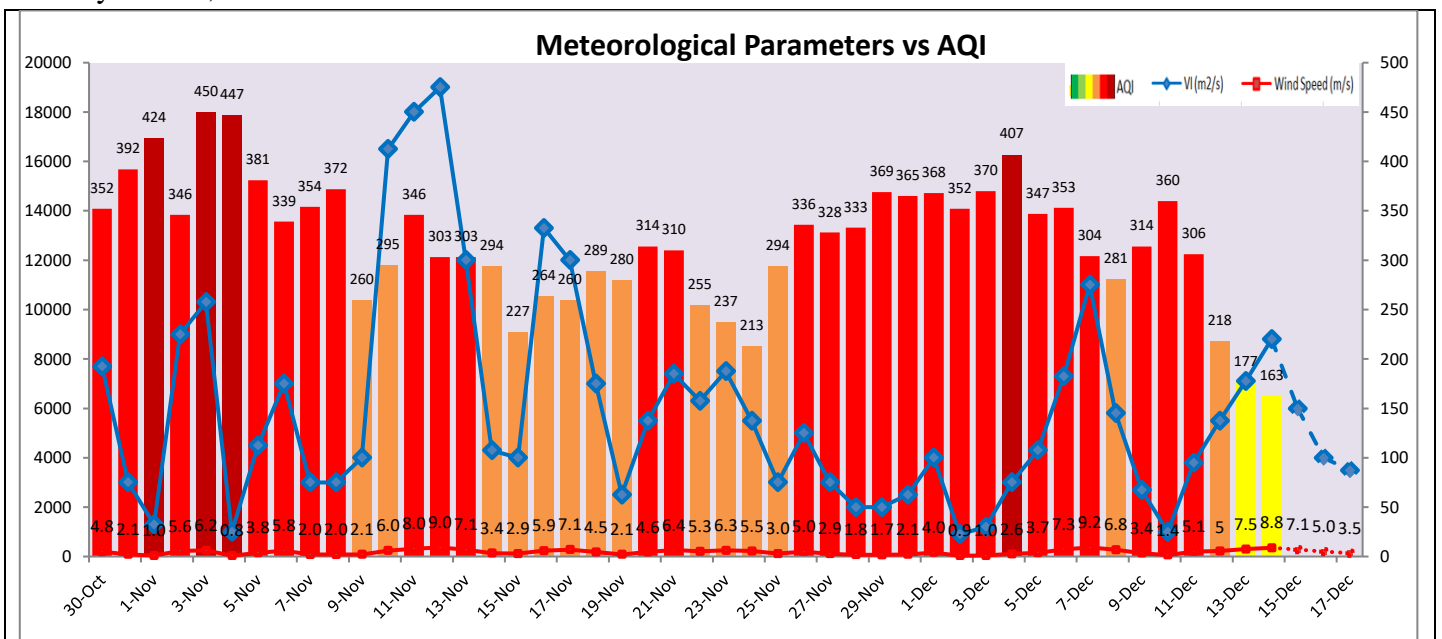
	Dec 15, 2022		Dec 16, 2022- Dec 17, 2022	
	Concentration	AQI Category	Concentration	AQI Category
PM ₁₀	172	Moderate	201	Moderate
PM _{2.5}	74	Moderate	87	Moderate

Wind Forecast for Delhi:

	Wind speed (at surface) in km/h		Wind speed (at 900 m) in km/h	Wind Direction	
	As per IMD (range)	As per windy.com (at 16:00 hrs.)	As per windy.com (at 16:00hrs)	As per IMD	As per windy.com at 900m
Dec 15, 2022	08-14	10	34	NW/W	NW
Dec 16, 2022	06-08	11	25	NW	NW
Dec 17, 2022	04-08	08	25	NW	NW

IMD Alert for Tomorrow (15.12.2022):

The air quality is likely to deteriorate marginally but remain in Moderate category on 15.12.2022 and reach in Poor category on 16.12.2022. The predominant surface wind is likely to be coming from Northwest/West direction in Delhi with wind speed 08-14 kmph, clear sky and mist in the morning tomorrow. Ventilation index is likely to be 6,000 m²/s.



Hotspots for Today

City	Station Name	AQI value	Air Quality	Prominent Pollutant
Delhi	NSIT Dwarka, Delhi - CPCB	273	Poor	PM _{2.5}
	Shadipur, Delhi - CPCB	240	Poor	PM _{2.5}
	Vivek Vihar, Delhi - DPCC	215	Poor	PM _{2.5}
	Anand Vihar, Delhi - DPCC	198	Moderate	PM _{2.5}
	Jahangirpuri, Delhi - DPCC	194	Moderate	PM _{2.5}
Faridabad	Sector 30, Faridabad - HSPCB	226	Poor	PM _{2.5}
	New Industrial Town, Faridabad - HSPCB	173	Moderate	PM ₁₀
Gurugram	Teri Gram, Gurugram - HSPCB	183	Moderate	PM ₁₀
	Vikas Sadan, Gurugram - HSPCB	164	Moderate	PM _{2.5}
Ghaziabad	Vasundhara, Ghaziabad - UPPCB	171	Moderate	PM ₁₀
Greater Noida	Knowledge Park - V, Greater Noida - UPPCB	173	Moderate	PM ₁₀
Noida	Sector - 62, Noida - IMD	142	Moderate	PM ₁₀