



Central Pollution Control Board

Air Quality Status for Delhi & NCR

Dated – November 14, 2022



Current Air Quality Status:

Air Quality Index (AQI) (Average of past 24 hours)

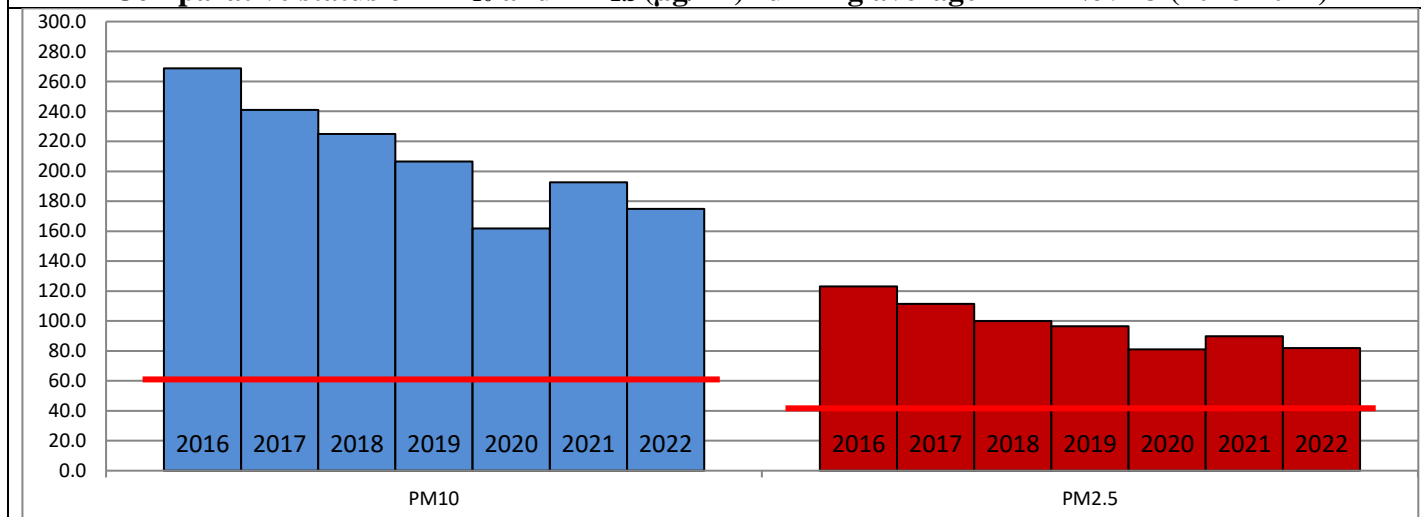
	Air Quality	AQI Value	Prominent Pollutant
Delhi	Poor	294 ↓	PM _{2.5} , PM ₁₀
Faridabad	Very Poor	316 ↑	PM _{2.5} , PM ₁₀
Ghaziabad	Poor	270 ↑	PM _{2.5} , PM ₁₀
Greater Noida	Poor	284 ↑	PM _{2.5} , PM ₁₀
Gurugram	Poor	230 ↓	PM _{2.5}
Noida	Poor	250 ↑	PM _{2.5} , PM ₁₀

*Data available for 37 stations in Delhi today. # ↓ ↑ arrows indicate a decrease/increase as compared to the value on the previous day.

Comparative status of AQI - Delhi from 01 January to 14 November 2016-2022

Category	Year	2016	2017	2018	2019	2020	2021	2022	2016	2017	2018	2019	2020	2021	2022	
	No. of days	307	318	318	318	319	318	318								
Good (0–50)		0	2	0	2	5	1	3								
Satisfactory (51–100)		24	45	53	58	95	81	65	110	150	158	175	224	197	160	
Moderate (101–200)		86	103	105	115	124	115	92								
Poor (201–300)		116	102	104	90	56	69	118								
Very Poor (301–400)		63	58	44	38	30	39	36	197	168	160	143	95	121	158	
Severe (>401)		18	8	12	15	9	13	4								

Comparative status of PM₁₀ and PM_{2.5} (µg/m³) running average – Till Nov 13 (2016-2022)



Hotspots for Today:

*Details given overleaf

Delhi	NSIT Dwarka Jahangirpuri, Anand Vihar, Narela, Bawana	Ghaziabad	Loni
Faridabad	Sector- 16A, New Industrial Town	Greater Noida	Knowledge Park-III
Gurugram	Vikas Sadan, Sector-51	Noida	Sector – 116, Sector-1

Forecast by IITM (Delhi):

	Nov 15, 2022		Nov 16, 2022- Nov 17, 2022	
	Concentration	AQI Category	Concentration	AQI Category
PM ₁₀	279	Poor	304	Poor
PM _{2.5}	142	Very Poor	155	Very Poor

Wind Forecast for Delhi:

	Wind speed (at surface) in km/h		Wind speed (at 900 m) in km/h	Wind Direction	
	As per IMD (range)	As per windy.com (at 16:00 hrs.)	As per windy.com (at 16:00hrs)	As per IMD	As per windy.com at 900m
Nov 15, 2022	12-18	05	08	NW	W
Nov 16, 2022	12-22	09	29	NW	NW
Nov 17, 2022	10-22	09	32	NW	NW

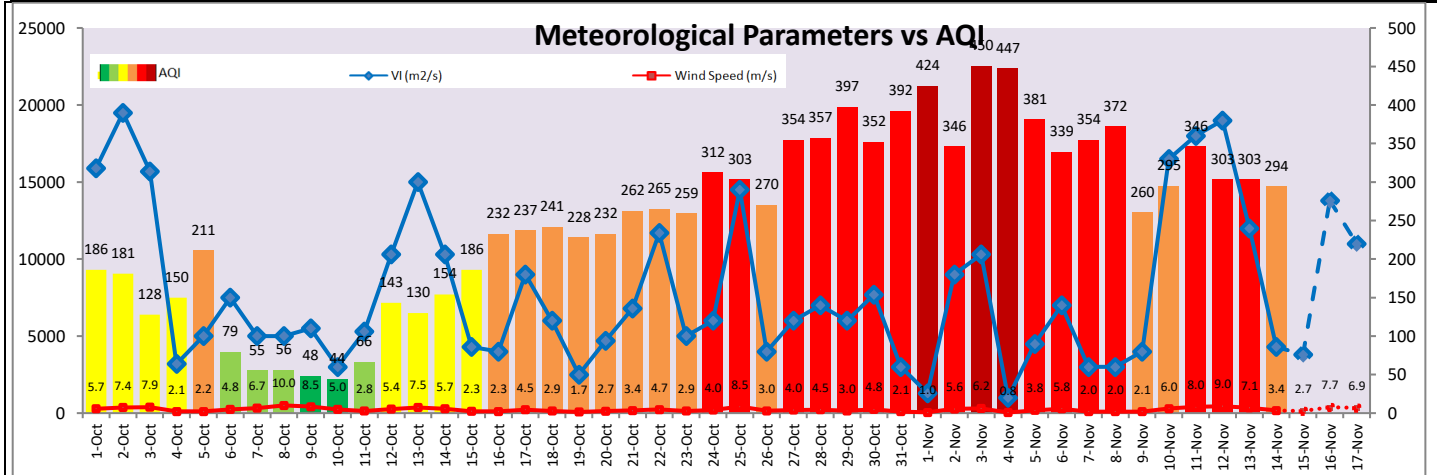
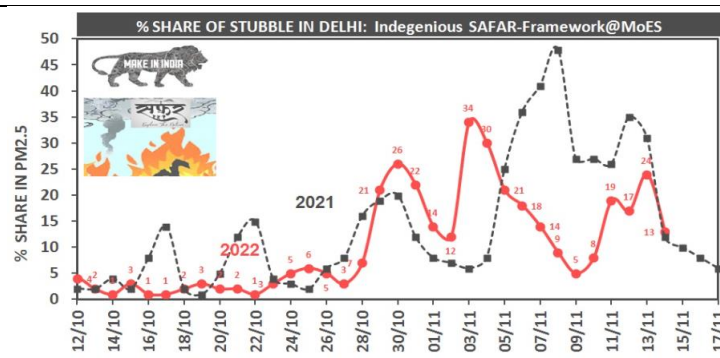
IMD Alert for Tomorrow (15.11.2022):

The overall air quality over Delhi is likely to remain in Poor category on 15.11.2022. The predominant surface wind is likely to be coming from Northwest direction in Delhi with wind speed 12-18 kmph, mainly clear sky and mist in the morning tomorrow. Ventilation index is likely to be 3,800 m²/s.

Active Fire Events (AFE):

Date	Punjab		Haryana	
	Nos. on the day	Total since September 15	Nos. on the day	Total since September 15
13.11.2022	2175	45319	132	3111
13.11.2021	3742	62863	210	5400

* As per IITM, the impact of stubble burning is ~13%.



Hotspots for Today

City	Station Name	AQI value	Air Quality	Prominent Pollutant
Delhi	Anand Vihar, Delhi - DPCC	376	Very Poor	PM ₁₀
	NSIT Dwarka, Delhi - CPCB	360	Very Poor	PM _{2.5}
	Jahangirpuri, Delhi - DPCC	353	Very Poor	PM _{2.5}
	Narela, Delhi - DPCC	350	Very Poor	PM _{2.5}
	Bawana, Delhi - DPCC	346	Very Poor	PM _{2.5}
Faridabad	Sector- 16A, Faridabad - HSPCB	354	Very Poor	PM _{2.5}
	New Industrial Town, Faridabad - HSPCB	350	Very Poor	PM ₁₀
Gurugram	Sector-51, Gurugram - HSPCB	347	Very Poor	PM _{2.5}
	Vikas Sadan, Gurugram - HSPCB	277	Poor	PM _{2.5}
Ghaziabad	Loni, Ghaziabad - UPPCB	273	Poor	PM _{2.5}
Greater Noida	Knowledge Park - III, Greater Noida - UPPCB	303	Very Poor	PM _{2.5}
Noida	Sector-116, Noida - UPPCB	272	Poor	PM _{2.5}
	Sector-1, Noida - UPPCB	230	Poor	PM _{2.5}