



Central Pollution Control Board

Air Quality Status for Delhi & NCR

Dated – November 14, 2021



Current Air Quality Status:

Air Quality Index (AQI) (Average of past 24 hours)

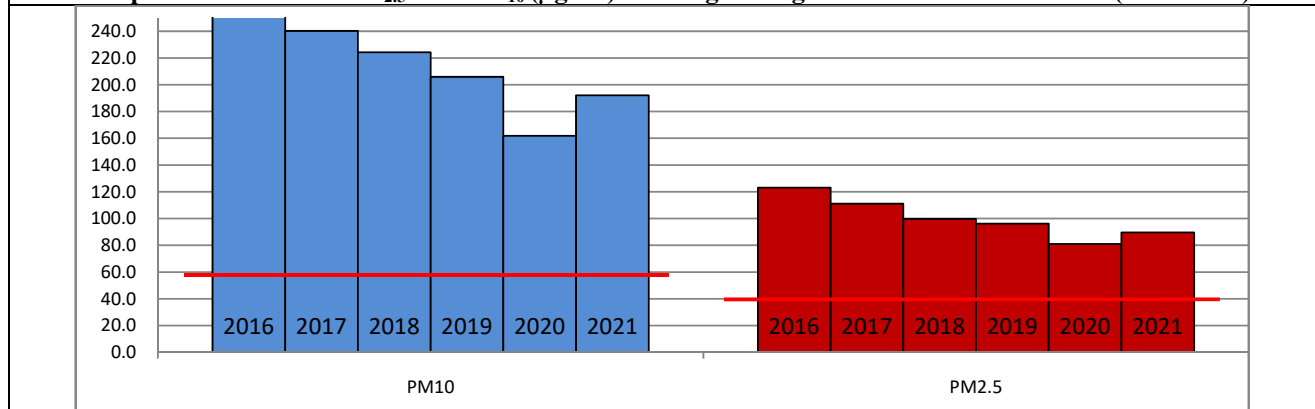
	Air Quality	AQI Value	Prominent Pollutant
Delhi	Very Poor	330 ↓	PM ₁₀ , PM _{2.5}
Faridabad	Poor	298 ↓	PM _{2.5}
Ghaziabad	Very Poor	331 ↓	PM _{2.5}
Greater Noida	Very Poor	310 ↓	PM _{2.5}
Gurugram	Poor	287 ↓	PM ₁₀ , PM _{2.5}
Noida	Very Poor	321 ↓	PM ₁₀ , PM _{2.5}

*Data available for 36 stations in Delhi today. # ↓, ↑ arrows indicate increase/decrease as compared to value on the previous day

Comparative status of AQI - Delhi from 01 January to 14 November 2016-2021

Category	Year	2016	2017	2018	2019	2020	2021	2016	2017	2018	2019	2020	2021
	No. of days	307	318	318	318	319	318						
Good (0–50)		0	2	0	2	5	1						
Satisfactory (51–100)		25	45	53	58	95	72	108	150	158	175	224	197
Moderate (101–200)		83	103	105	115	124	124						
Poor (201–300)		116	102	104	90	56	69						
Very Poor (301–400)		65	58	44	38	30	39	199	168	160	143	95	121
Severe (>401)		18	8	12	15	9	13						

Comparative status of PM_{2.5} and PM₁₀ (µg/m³) running average - Delhi till November 13 (2016-2021)



* The PM values are 24 hourly averages (6 am to 6 am)

Hotspots for Today:

*Details given overleaf

Delhi	Jahangirpuri, Anand Vihar, Bawana, Rohini, Wazirpur	Greater Noida	Knowledge Park –III
Faridabad	Sector 11	Gurugram	VikasSadan, NISE Gwal Pahari
Ghaziabad	Loni, Vasundhara	Noida	Sector – 62, Sector –116

Forecast by IITM:

Parameters	November 15, 2021		November 16, 2021– November 17, 2021	
	Concentration	AQI Category	Concentration	AQI Category
PM ₁₀	240	Moderate	253	Poor
PM _{2.5}	128	Very Poor	136	Very Poor

▪ **Wind Forecast for Delhi:**

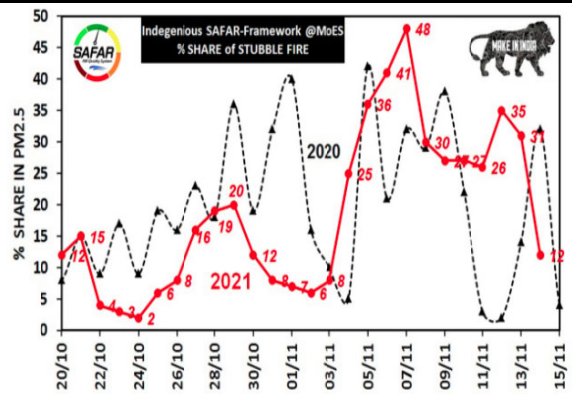
Dates	Wind speed (at surface) in km/h		Wind speed (at 900 m) in km/h	Wind Direction	
	As per IMD (at 17:30 hrs.)	As per windy.com (at 16:00 hrs.)	As per windy.com (at 16:00hrs)	As per IMD (at 17:30hrs.)	As per windy.com at 900m
November 15, 2021	04	09	21	NW	NW
November 16, 2021	04	08	17	N	NW
November 17, 2021	08	05	07	N	E

▪ **IMD Alert for Tomorrow (15.11.2021):**

The air quality is likely to deteriorate but remain in Very Poor tomorrow. The predominant surface wind is likely to be coming from North directions of Delhi with wind speed upto 04 kmph, mainly clear sky and shallow fog in the morning. Ventilation index is likely to be 6,000 m²/s.

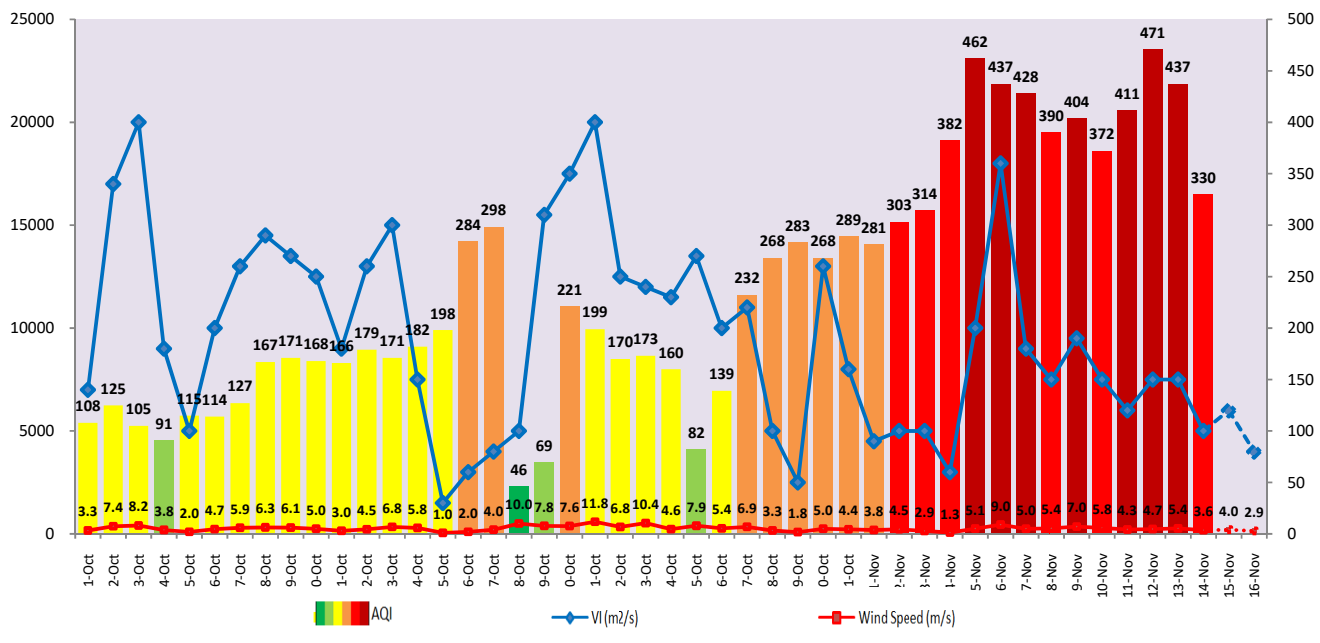
▪ **Active Fire Events (AFE)**

Date	Punjab		Haryana	
	Nos. on the day	Total since September 21	Nos. on the day	Total since September 21
13.11.2021	3742	62863	210	5400
13.11.2020	2441	79751	105	3635



The contribution of biomass burning in PM_{2.5} concentration is likely to be approximately 5% on 14.11.2021.

Meteorological Parameters vs AQI



▪ Hotspots for Today

City	Station Name	AQI value	Air Quality	Prominent Pollutant
Delhi	Jahangirpuri, Delhi - DPCC	401	Severe	PM _{2.5}
	Anand Vihar, Delhi - DPCC	398	Very Poor	PM ₁₀
	Bawana, Delhi - DPCC	383	Very Poor	PM _{2.5}
	Rohini, Delhi - DPCC	369	Very Poor	PM _{2.5}
	Wazirpur, Delhi - DPCC	369	Very Poor	PM ₁₀
Faridabad	Sector 11, Faridabad - HSPCB	366	Very Poor	PM ₁₀
Gurugram	NISE Gwal Pahari, Gurugram - IMD	302	Very Poor	PM _{2.5}
	Vikas Sadan, Gurugram - HSPCB	297	Poor	PM _{2.5}
Ghaziabad	Loni, Ghaziabad - UPPCB	344	Very Poor	PM _{2.5}
	Vasundhara, Ghaziabad - UPPCB	333	Very Poor	PM _{2.5}
Greater Noida	Knowledge Park - III, Greater Noida - UPPCB	321	Very Poor	PM _{2.5}
Noida	Sector - 62, Noida - IMD	351	Very Poor	PM _{2.5}
	Sector-116, Noida - UPPCB	336	Very Poor	PM _{2.5}