



Central Pollution Control Board

Air Quality Status for Delhi & NCR

Dated – October 14, 2022



Current Air Quality Status:

Air Quality Index (AQI) (Average of past 24 hours)

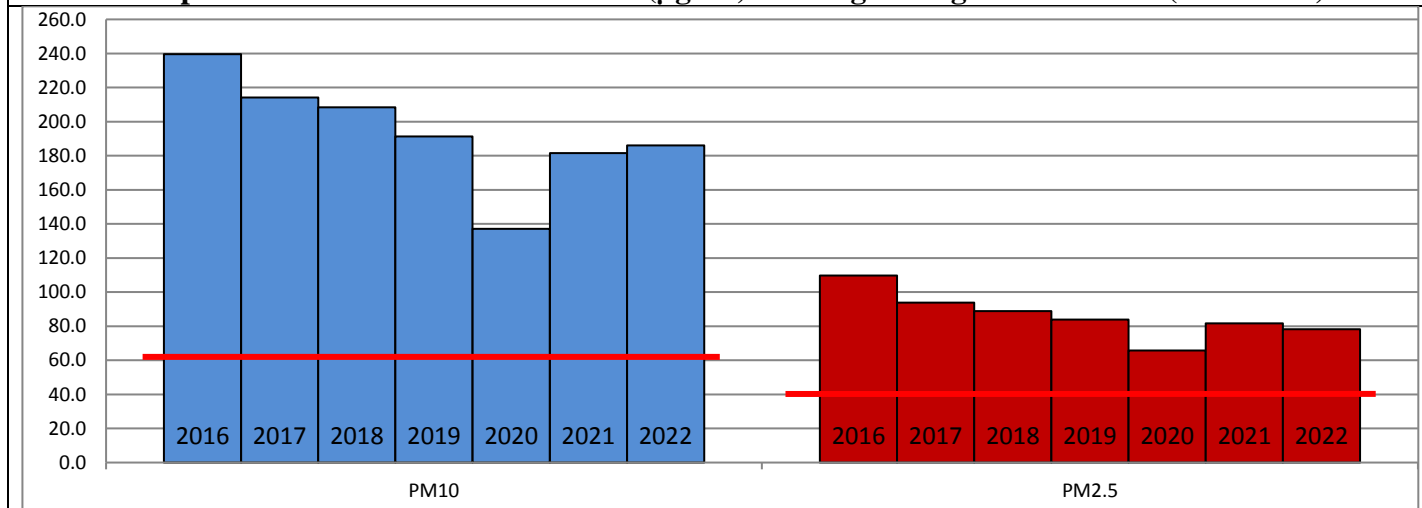
	Air Quality	AQI Value	Prominent Pollutant
Delhi	Moderate	154 ↑	PM ₁₀ , PM _{2.5} , O ₃
Faridabad	Moderate	163 ↓	PM ₁₀ , PM _{2.5}
Ghaziabad	Moderate	163 ↓	PM ₁₀ , PM _{2.5}
Greater Noida	Moderate	158 ↓	PM ₁₀
Gurugram	Moderate	169 ↓	PM ₁₀ , PM _{2.5} , O ₃
Noida	Moderate	157 ↓	PM ₁₀ , PM _{2.5}

*Data available for 34 stations in Delhi today. # ↓ ↑ arrows indicate a decrease/increase as compared to the value on the previous day.

Comparative status of AQI - Delhi from 01 January to 14 October 2016-2022

Category	Year	2016	2017	2018	2019	2020	2021	2022	2016	2017	2018	2019	2020	2021	2022
	No. of days	276	287	287	287	288	287	287							
Good (0–50)		0	2	0	2	5	0	3							
Satisfactory (51–100)		24	45	53	58	95	79	65	110	150	157	174	224	188	159
Moderate (101–200)		86	103	104	114	124	109	91							
Poor (201–300)		106	100	96	79	47	60	106							
Very Poor (301–400)		54	37	28	27	15	33	21	166	137	130	113	64	99	128
Severe (>401)		6	0	6	7	2	6	1							

Comparative status of PM₁₀ and PM_{2.5} (µg/m³) running average – Till Oct 12 (2016-2022)



Hotspots for Today:

*Details given overleaf

Delhi	Anand Vihar, NSIT Dwarka, ITO, Jahangirpuri, Shadipur	Ghaziabad	Loni, Indirapuram
Faridabad	Sector 11	Greater Noida	Knowledge Park - V
Gurugram	Sector-51, Teri Gram	Noida	Sector-1, Sector - 116

Forecast by IITM (Delhi):

	Oct 15, 2022		Oct 16, 2022- Oct 17, 2022	
	Concentration	AQI Category	Concentration	AQI Category
PM ₁₀	163	Moderate	179	Moderate
PM _{2.5}	76	Moderate	83	Moderate

Wind Forecast for Delhi:

	Wind speed (at surface) in km/h		Wind speed (at 900 m) in km/h	Wind Direction	
	As per IMD (range)	As per windy.com (at 16:00 hrs.)	As per windy.com (at 16:00hrs)	As per IMD	As per windy.com at 900m
Oct 15, 2022	04-10	09	18	Variable	NW
Oct 16, 2022	04-06	10	22	SE/NE	NW
Oct 17, 2022	04	08	19	Variable	NW

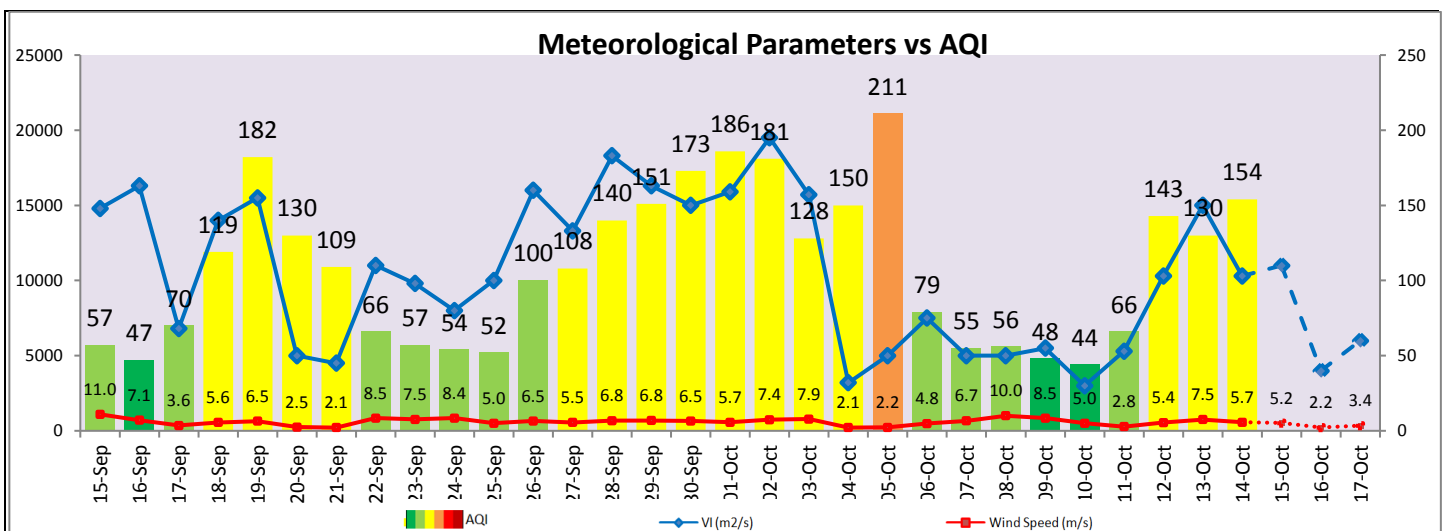
IMD Alert for Tomorrow (15.10.2022):

The air quality is likely to remain in Moderate to Poor category on 15.10.2022 and Poor category on 16.10.2022. The predominant surface wind is likely to be coming from variable directions in Delhi with wind speed 04-10 kmph and mainly clear sky tomorrow. Ventilation index is likely to be 11,000 m²/s.

Active Fire Events (AFEs):

Date	Punjab		Haryana	
	Nos. on the day	Total since September 15	Nos. on the day	Total since September 15
13.10.2022	120	987	15	102
13.10.2021	132	1057	91	389

* As per IMD, the impact of stubble burning is negligible.



Hotspots for Today

City	Station Name	AQI value	Air Quality	Prominent Pollutant
Delhi	Anand Vihar, Delhi - DPCC	377	Very Poor	PM ₁₀
	NSIT Dwarka, Delhi - CPCB	252	Poor	PM _{2.5}
	ITO, Delhi - CPCB	250	Poor	PM _{2.5}
	Jahangirpuri, Delhi - DPCC	213	Poor	PM _{2.5}
	Shadipur, Delhi - CPCB	199	Moderate	PM _{2.5}
Faridabad	Sector 11, Faridabad - HSPCB	176	Moderate	PM ₁₀
Gurugram	Sector-51, Gurugram - HSPCB	222	Poor	PM _{2.5}
	Teri Gram, Gurugram - HSPCB	174	Moderate	PM ₁₀
Ghaziabad	Loni, Ghaziabad - UPPCB	215	Poor	PM _{2.5}
	Indirapuram, Ghaziabad - UPPCB	155	Moderate	PM ₁₀
Greater Noida	Knowledge Park - V, Greater Noida - UPPCB	168	Moderate	PM ₁₀
Noida	Sector-116, Noida - UPPCB	171	Moderate	PM _{2.5}
	Sector-1, Noida - UPPCB	158	Moderate	PM ₁₀