



Central Pollution Control Board

Air Quality Status for Delhi & NCR

Dated – June 14, 2022



Current Air Quality Status:

Air Quality Index (AQI) (Average of past 24 hours)

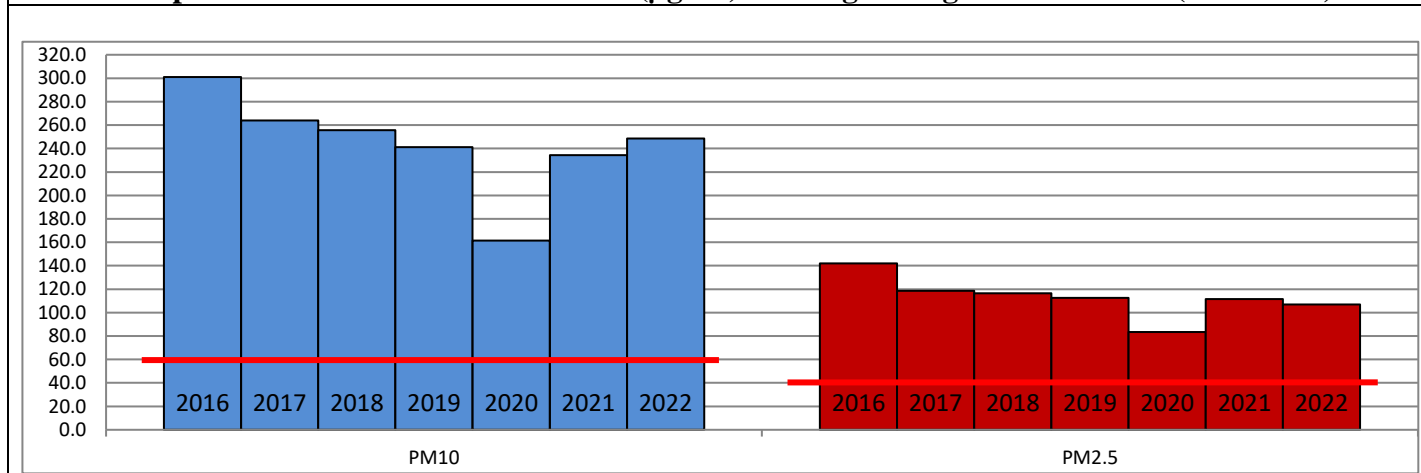
	Air Quality	AQI Value	Prominent Pollutant
Delhi	Poor	222↑	PM _{2.5} , PM ₁₀
Faridabad	Moderate	111↓	PM ₁₀
Ghaziabad	Poor	257↑	PM ₁₀
Greater Noida	Poor	236↑	PM ₁₀
Gurugram	Poor	233↑	PM _{2.5} , PM ₁₀
Noida	Poor	249↑	PM ₁₀

*Data available for 35 stations in Delhi today. # ↓ ↑ arrows indicate a decrease/increase as compared to the value on the previous day.

Comparative status of AQI - Delhi from 01 January to 14 June 2016-2022

Category	Year	2016	2017	2018	2019	2020	2021	2022	2016	2017	2018	2019	2020	2021	2022
	No. of days	161	165	165	165	166	165	165							
Good (0–50)		0	0	0	0	1	0	0							
Satisfactory (51–100)		0	0	1	2	29	7	4	18	42	55	65	112	70	39
Moderate (101–200)		18	42	54	63	82	63	35							
Poor (201–300)		84	87	78	67	37	56	104							
Very Poor (301–400)		53	36	27	26	15	33	21	143	123	110	100	54	95	126
Severe (>401)		6	0	5	7	2	6	1							

Comparative status of PM_{2.5} and PM₁₀ (µg/m³) running average – Till June 13 (2016-2022)



Hotspots for Today:

*Details given overleaf

Delhi	Anand Vihar, Mundka, NSIT Dwarka, Wazirpur, Pusa	Gurugram	Teri Gram
Faridabad	-	Greater Noida	Knowledge Park-III
Ghaziabad	Loni, Vasundhara	Noida	Sector-125, Sector-1

Forecast by IITM (Delhi):

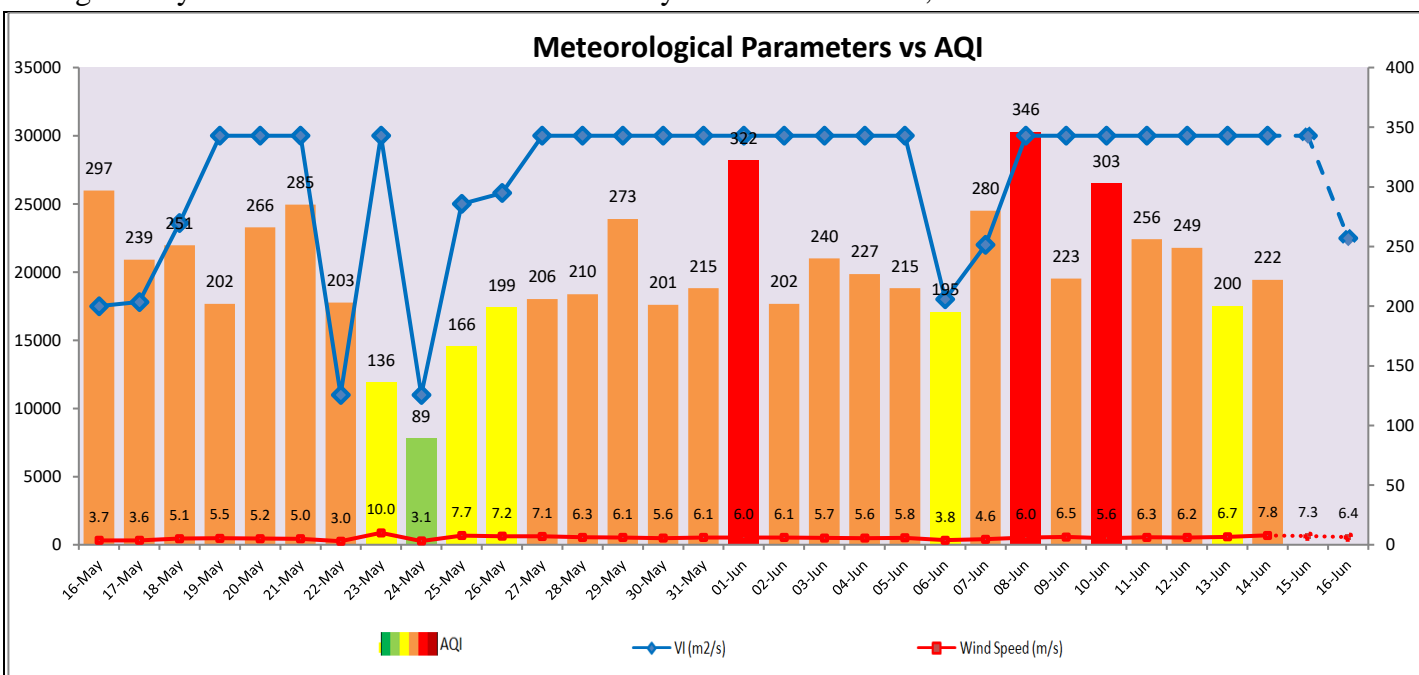
Parameters	June 15, 2022		June 16, 2022- June 17, 2022	
	Concentration	AQI Category	Concentration	AQI Category
PM ₁₀	214	Moderate	167	Moderate
PM _{2.5}	52	Satisfactory	41	Satisfactory

Wind Forecast for Delhi:

	Wind speed (at surface) in km/h		Wind speed (at 900 m) in km/h	Wind Direction	
	As per IMD (at 17:30 hrs.)	As per windy.com (at 16:00 hrs.)	As per windy.com (at 16:00hrs)	As per IMD (at 17:30hrs.)	As per windy.com at 900m
June 15, 2022	30	18	27	W	W
June 16, 2022	20	15	20	W	W
June 17, 2022	08	10	18	W	W

IMD Alert for Tomorrow (15.06.2022):

The air quality over Delhi-NCT is likely to remain in Poor to Moderate category on 15.06.2022. The predominant surface wind is likely to be coming from Northwest/West direction in Delhi with wind speed 24-30 kmph, partly cloudy sky with very light rain/thundershowers and strong surface winds (speed 25-35 kmph) during the day tomorrow. Ventilation index is likely to be more than 30,000 m²/s.



Hotspots for Today

City	Station Name	AQI value	Air Quality	Prominent Pollutant
Delhi	Anand Vihar, Delhi - DPCC	308	Very Poor	PM ₁₀
	Mundka, Delhi - DPCC	284	Poor	PM ₁₀
	NSIT Dwarka, Delhi - CPCB	274	Poor	PM _{2.5}
	Wazirpur, Delhi - DPCC	255	Poor	PM ₁₀
	Pusa, Delhi - DPCC	251	Poor	PM ₁₀
Gurugram	Teri Gram, Gurugram - HSPCB	251	Poor	PM ₁₀
Ghaziabad	Loni, Ghaziabad - UPPCB	352	Very Poor	PM ₁₀
	Vasundhara, Ghaziabad - UPPCB	260	Poor	PM ₁₀
Greater Noida	Knowledge Park - III, Greater Noida - UPPCB	243	Poor	PM ₁₀
Noida	Sector - 125, Noida - UPPCB	280	Poor	PM ₁₀
	Sector-1, Noida - UPPCB	263	Poor	PM ₁₀