



# Central Pollution Control Board

## Air Quality Status for Delhi & NCR

Dated – May 14, 2023



### Current Air Quality Status:

#### Air Quality Index (AQI) (Average of past 24 hours)

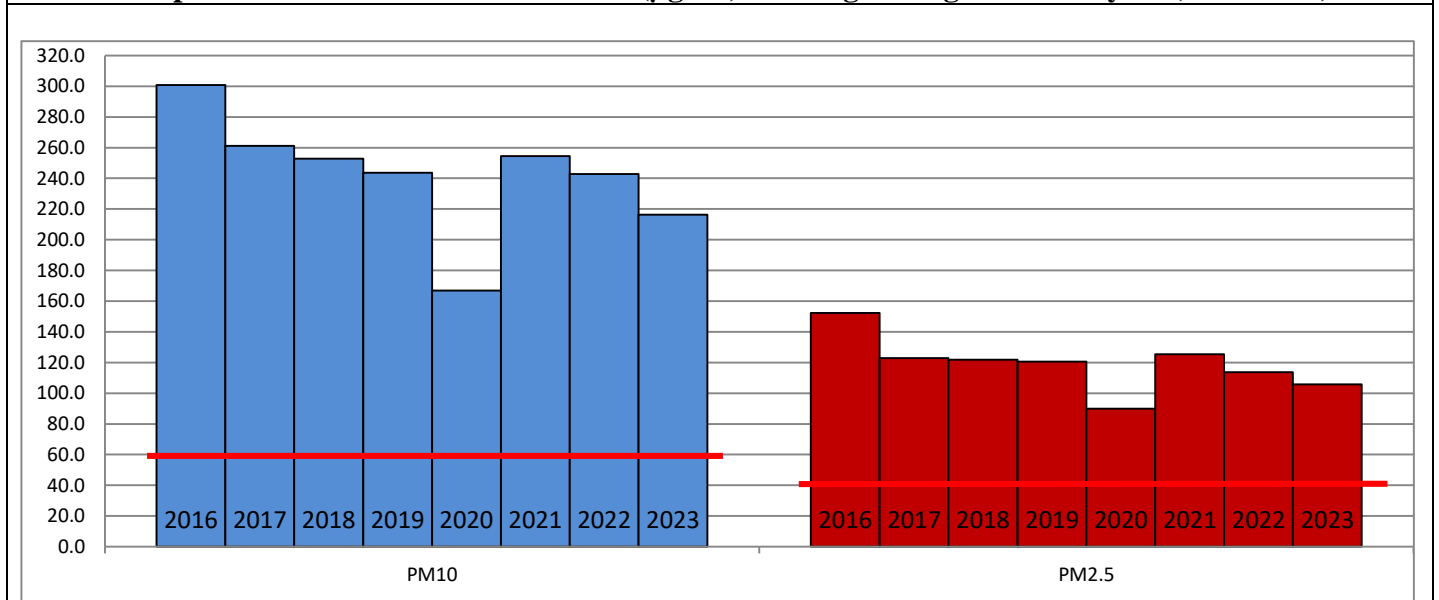
	Air Quality	AQI Value	Prominent Pollutant
Delhi	Poor	259 ↓	PM <sub>10</sub> , PM <sub>2.5</sub>
Faridabad	Moderate	166 ↓	PM <sub>10</sub>
Ghaziabad	Poor	233 ↓	PM <sub>10</sub>
Greater Noida	Poor	278 ↓	PM <sub>10</sub>
Gurugram	Very Poor	306 ↓	PM <sub>10</sub> , PM <sub>2.5</sub>
Noida	Poor	258 ↓	PM <sub>10</sub>

\*Data available for 39 stations in Delhi today. # ↓ ↑ arrows indicate a decrease/increase as compared to the value on the previous day.

#### Comparative status of AQI - Delhi from 01 January to 14 May 2016-2023

Category	Year	2016	2017	2018	2019	2020	2021	2022	2023	2016	2017	2018	2019	2020	2021	2022	2023
	No. of days	130	134	134	134	134	134	134	134								
Good (0–50)		0	0	0	0	1	0	0	0								
Satisfactory (51–100)		0	0	1	2	27	0	3	5	11	31	40	47	82	43	33	60
Moderate (101–200)		11	31	39	45	54	43	30	55								
Poor (201–300)		66	68	65	54	35	53	82	51								
Very Poor (301–400)		47	35	26	26	15	32	18	20	119	103	94	87	52	91	101	74
Severe (>401)		6	0	3	7	2	6	1	3								

#### Comparative status of PM<sub>10</sub> and PM<sub>2.5</sub> (µg/m<sup>3</sup>) running average – Till May 11 (2016-2023)



#### Hotspots for Today:

\*Details given overleaf

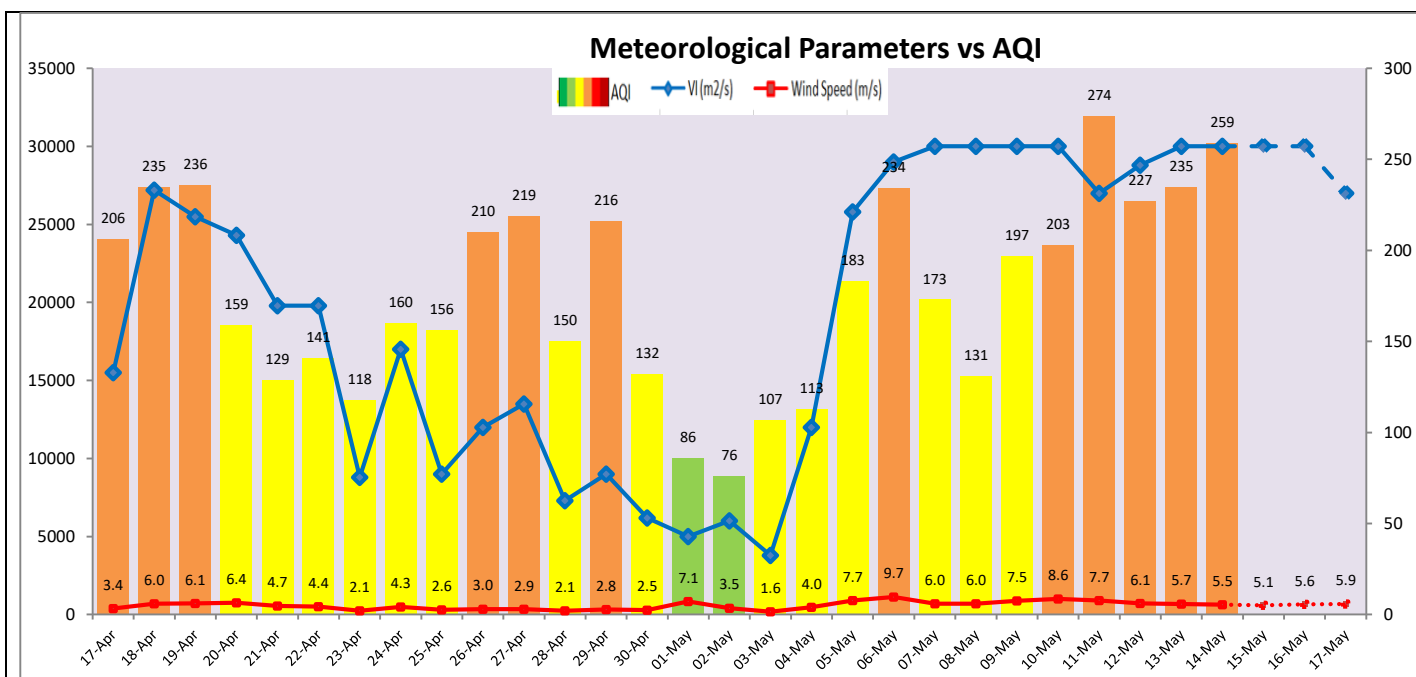
Delhi	Shadipur, Mundka, Bawana, NSIT Dwarka, Anand Vihar	Ghaziabad	Vasundhara, Loni
Faridabad	Sector-11	Greater Noida	Knowledge Park-V
Gurugram	Teri Gram, Sector-51	Noida	Sector-116, Sector-125

### Wind Forecast for Delhi:

	Wind speed (at surface) in km/h		Wind speed (at 900 m) in km/h	Wind Direction	
	As per IMD (range)	As per windy.com (at 16:00 hrs.)	As per windy.com (at 16:00hrs)	As per IMD	As per windy.com at 900m
May 15, 2023	20-24	19	30	W	NW
May 16, 2023	14-26	29	46	NW	W
May 17, 2023	16-20	13	22	WNW	W

### IMD Alert for Tomorrow (15.05.2023):

The air quality is likely to remain in Poor category on 15.05.2023. The predominant surface wind is likely to be coming from West directions in Delhi with wind speed 20-24 kmph, partly cloudy sky and strong surface winds (speed 30-40 kmph) during the day tomorrow. Ventilation index is likely to be 30,000 m<sup>2</sup>/s.



### Hotspots for Today

City	Station Name	AQI value	Air Quality	Prominent Pollutant
Delhi	Shadipur, Delhi - CPCB	383	Very Poor	PM <sub>2.5</sub>
	Mundka, Delhi - DPCC	353	Very Poor	PM <sub>10</sub>
	Bawana, Delhi - DPCC	339	Very Poor	PM <sub>10</sub>
	NSIT Dwarka, Delhi - CPCB	320	Very Poor	PM <sub>2.5</sub>
	Anand Vihar, Delhi - DPCC	316	Very Poor	PM <sub>10</sub>
Faridabad	Sector 11, Faridabad - HSPCB	271	Poor	PM <sub>10</sub>
Gurugram	Teri Gram, Gurugram - HSPCB	425	Severe	PM <sub>10</sub>
	Sector-51, Gurugram - HSPCB	323	Very Poor	PM <sub>2.5</sub>
Ghaziabad	Vasundhara, Ghaziabad - UPPCB	261	Poor	PM <sub>10</sub>
	Loni, Ghaziabad - UPPCB	241	Poor	PM <sub>10</sub>
Greater Noida	Knowledge Park - V, Greater Noida - UPPCB	284	Poor	PM <sub>10</sub>
Noida	Sector - 125, Noida - UPPCB	315	Very Poor	PM <sub>10</sub>
	Sector-116, Noida - UPPCB	290	Poor	PM <sub>10</sub>