



Central Pollution Control Board

Air Quality Status for Delhi &NCR

Dated – May 14, 2022



Current Air Quality Status:

Air Quality Index (AQI) (Average of past 24 hours)

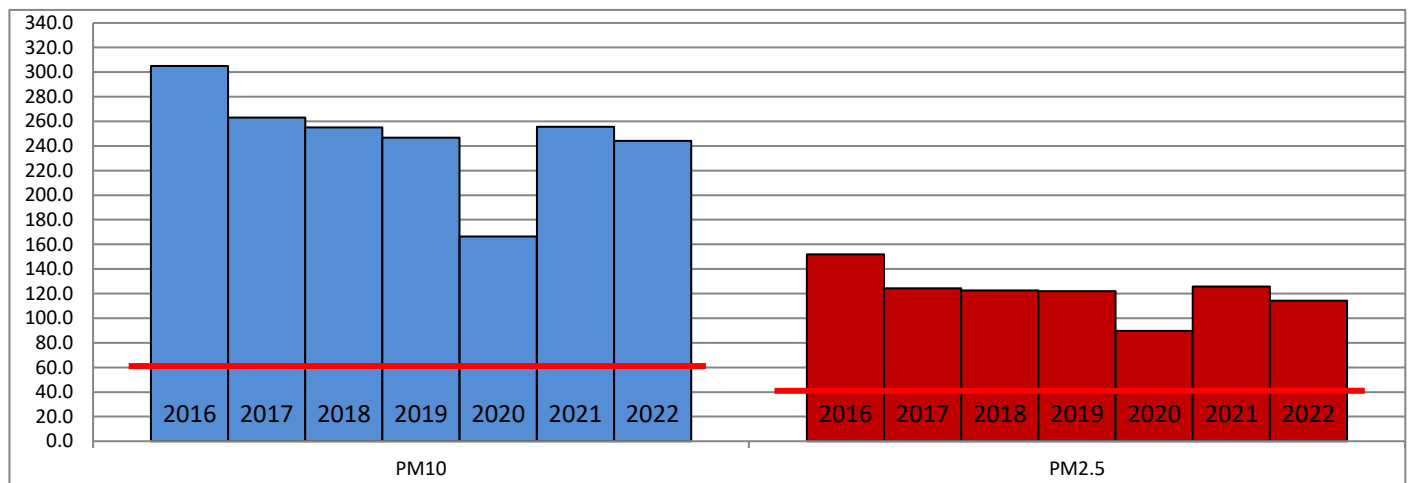
	Air Quality	AQI Value	Prominent Pollutant
Delhi	Poor	270 ↑	PM _{2.5} , PM ₁₀
Faridabad	Poor	267 ↑	PM _{2.5} , PM ₁₀ , O ₃
Ghaziabad	Poor	258 ↑	PM ₁₀
Greater Noida	Poor	267 ↑	PM ₁₀
Gurugram	Poor	235 ↑	PM _{2.5} , PM ₁₀
Noida	Very Poor	306 ↑	PM ₁₀

*Data available for 29 stations in Delhi today. # ↑ ↓ arrows indicate increase/decrease as compared to value on the previous day

Comparative status of AQI - Delhi from 01 January to 14 May 2016-2022

Category	Year	2016	2017	2018	2019	2020	2021	2022	2016	2017	2018	2019	2020	2021	2022
	No. of days	131	134	134	134	135	134	134							
Good (0–50)		0	0	0	0	1	0	0							
Satisfactory (51–100)		0	0	1	2	27	0	3	11	31	40	47	83	43	33
Moderate (101–200)		11	31	39	45	55	43	30							
Poor (201–300)		66	68	65	54	35	53	82							
Very Poor (301–400)		48	35	26	26	15	32	18	120	103	94	87	52	91	101
Severe (>401)		6	0	3	7	2	6	1							

Comparative status of PM_{2.5} and PM₁₀ (µg/m³) running average – Till May 12 (2016-2022)



Hotspots for Today:

*Details given overleaf

Delhi	Mundka, Bawana, Anand Vihar, Narela, Rohini	Gurugram	Sector-51, Teri Gram
Faridabad	Sector-11, Sector-30	Greater Noida	Knowledge Park-III
Ghaziabad	Loni, Vasundhara	Noida	Sector-125, Sector-116

Forecast by IITM:

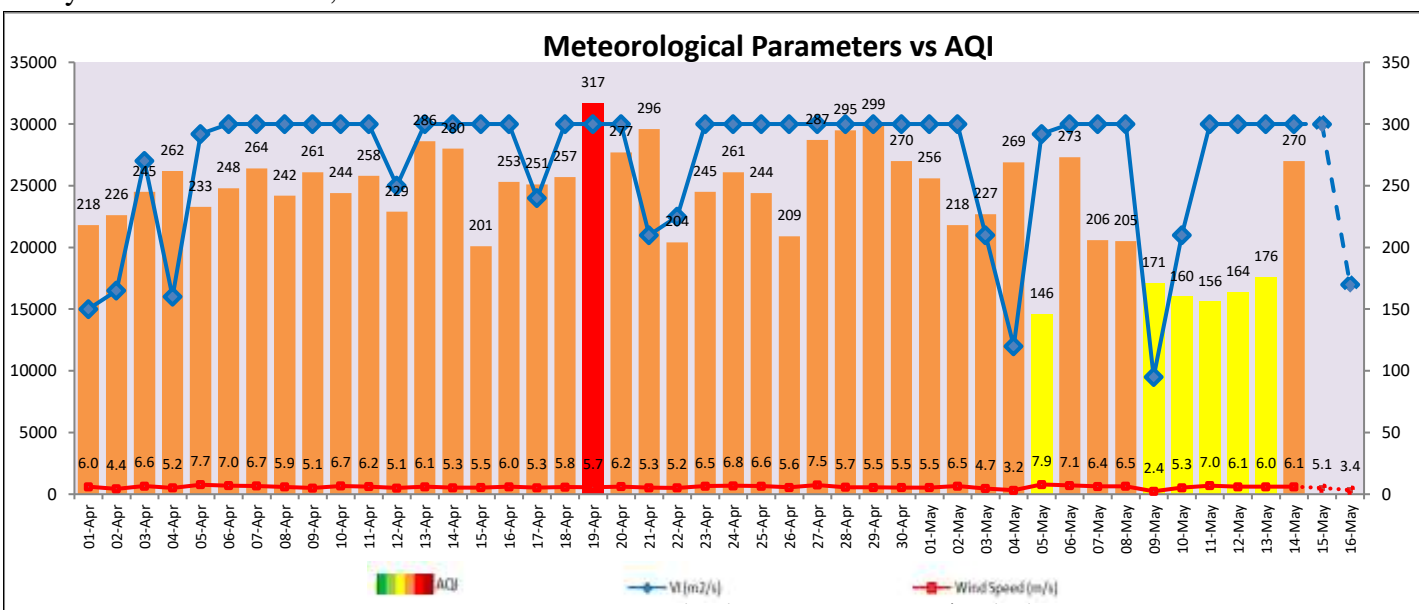
Parameters	May 15, 2022		May 16, 2022- May 17, 2022	
	Concentration	AQI Category	Concentration	AQI Category
PM ₁₀	305	Poor	355	Very Poor
PM _{2.5}	123	Very Poor	143	Very Poor

Wind Forecast for Delhi:

	Wind speed (at surface) in km/h		Wind speed (at 900 m) in km/h	Wind Direction	
	As per IMD (at 17:30 hrs.)	As per windy.com (at 16:00 hrs.)	As per windy.com (at 16:00hrs)	As per IMD (at 17:30hrs.)	As per windy.com at 900m
May 15, 2022	24	16	27	W	W
May 16, 2022	10	12	16	W	W
May 17, 2022	16	05	03	SW	NE

IMD Alert for Tomorrow (15.05.2022):

The air quality is likely to remain in Poor category on 15.05.2022. The predominant surface wind is likely to be coming from West direction of Delhi with wind speed 20-24 kmph, mainly clear sky, **heat wave conditions at most places** and strong surface winds (speed 20-30 kmph) during the day tomorrow. Ventilation index is likely to be more than 30,000 m²/s tomorrow.



Hotspots for Today

City	Station Name	AQI value	Air Quality	Prominent Pollutant
Delhi	Mundka, Delhi - DPCC	409	Severe	PM ₁₀
	Bawana, Delhi - DPCC	337	Very Poor	PM ₁₀
	Anand Vihar, Delhi - DPCC	334	Very Poor	PM ₁₀
	Narela, Delhi - DPCC	328	Very Poor	PM ₁₀
	Rohini, Delhi - DPCC	315	Very Poor	PM ₁₀
Faridabad	Sector 11, Faridabad - HSPCB	399	Very Poor	PM _{2.5}
	Sector 30, Faridabad - HSPCB	309	Very Poor	PM ₁₀
Gurugram	Sector-51, Gurugram - HSPCB	334	Very Poor	PM ₁₀
	Teri Gram, Gurugram - HSPCB	226	Poor	PM ₁₀
Ghaziabad	Loni, Ghaziabad - UPPCB	363	Very Poor	PM ₁₀
	Vasundhara, Ghaziabad - UPPCB	268	Poor	PM ₁₀
Greater Noida	Knowledge Park - III, Greater Noida - UPPCB	271	Poor	PM ₁₀
Noida	Sector - 125, Noida - UPPCB	340	Very Poor	PM ₁₀
	Sector-116, Noida - UPPCB	313	Very Poor	PM ₁₀