



# Central Pollution Control Board

## Air Quality Status for Delhi & NCR

Dated – March 14, 2022



### Current Air Quality Status:

#### Air Quality Index (AQI) (Average of past 24 hours)

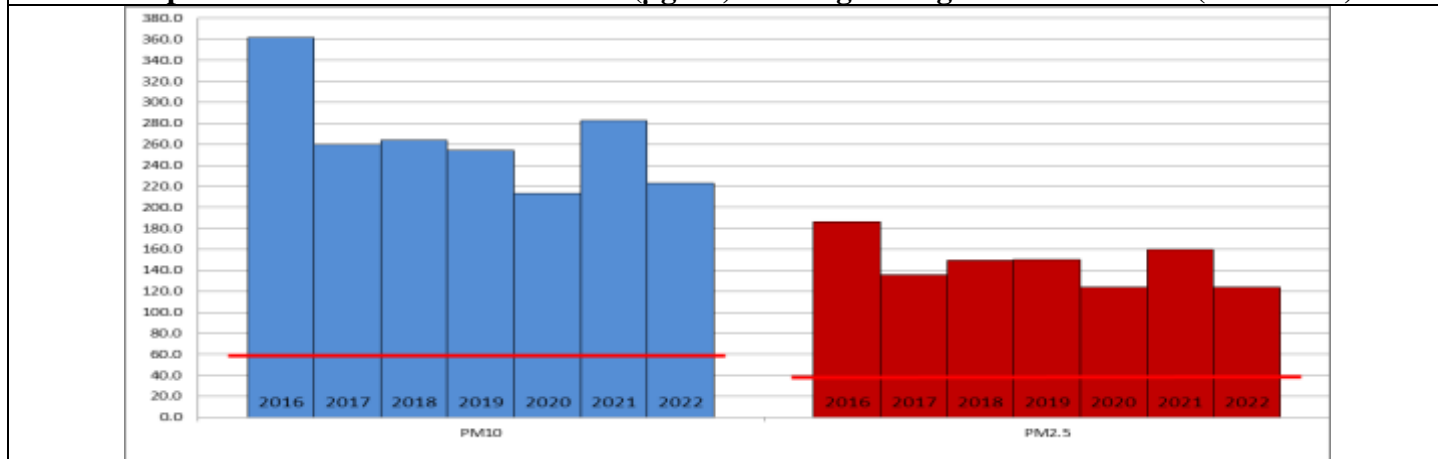
	Air Quality	AQI Value	Prominent Pollutant
Delhi	Poor	231↑	PM <sub>10</sub> , PM <sub>2.5</sub>
Faridabad	Poor	225↑	PM <sub>10</sub> , O <sub>3</sub> , CO
Ghaziabad	Poor	272↑	PM <sub>10</sub> , PM <sub>2.5</sub>
Greater Noida	Poor	231↑	PM <sub>2.5</sub> , O <sub>3</sub>
Gurugram	Poor	252↑	PM <sub>10</sub> , PM <sub>2.5</sub>
Noida	Poor	209↑	PM <sub>10</sub> , PM <sub>2.5</sub>

\*Data available for 36 stations in Delhi today. # ↑ ↓ arrows indicate increase/decrease as compared to value on the previous day

#### Comparative status of AQI - Delhi from 01 January to 14 March 2016-2022

Category	Year	2016							2022						
		2016	2017	2018	2019	2020	2021	2022	2016	2017	2018	2019	2020	2021	2022
	No. of days	70	73	73	73	74	73	73							
Good (0–50)		0	0	0	0	0	0	0							
Satisfactory (51–100)		0	0	0	1	5	0	3	4	13	15	21	22	8	25
Moderate (101–200)		4	13	15	20	17	8	22							
Poor (201–300)		19	36	34	24	35	30	30							
Very Poor (301–400)		41	24	21	21	15	29	17	66	60	58	52	52	65	48
Severe (>401)		6	0	3	7	2	6	1							

#### Comparative status of PM<sub>2.5</sub> and PM<sub>10</sub> (µg/m<sup>3</sup>) running average – Till March 13 (2016-2022)



#### Hotspots for Today:

\*Details given overleaf

Delhi	Anand Vihar, NSIT Dwarka, Dwarka-Sector 8, Bawana, Chandni Chowk	Gurugram	Vikas Sadan, Sector-51
Faridabad	Sector-16A, Sector 30	Greater Noida	Knowledge Park - V
Ghaziabad	Sanjay Nagar, Loni	Noida	Sector-1, Sector-116

#### Forecast by IITM:

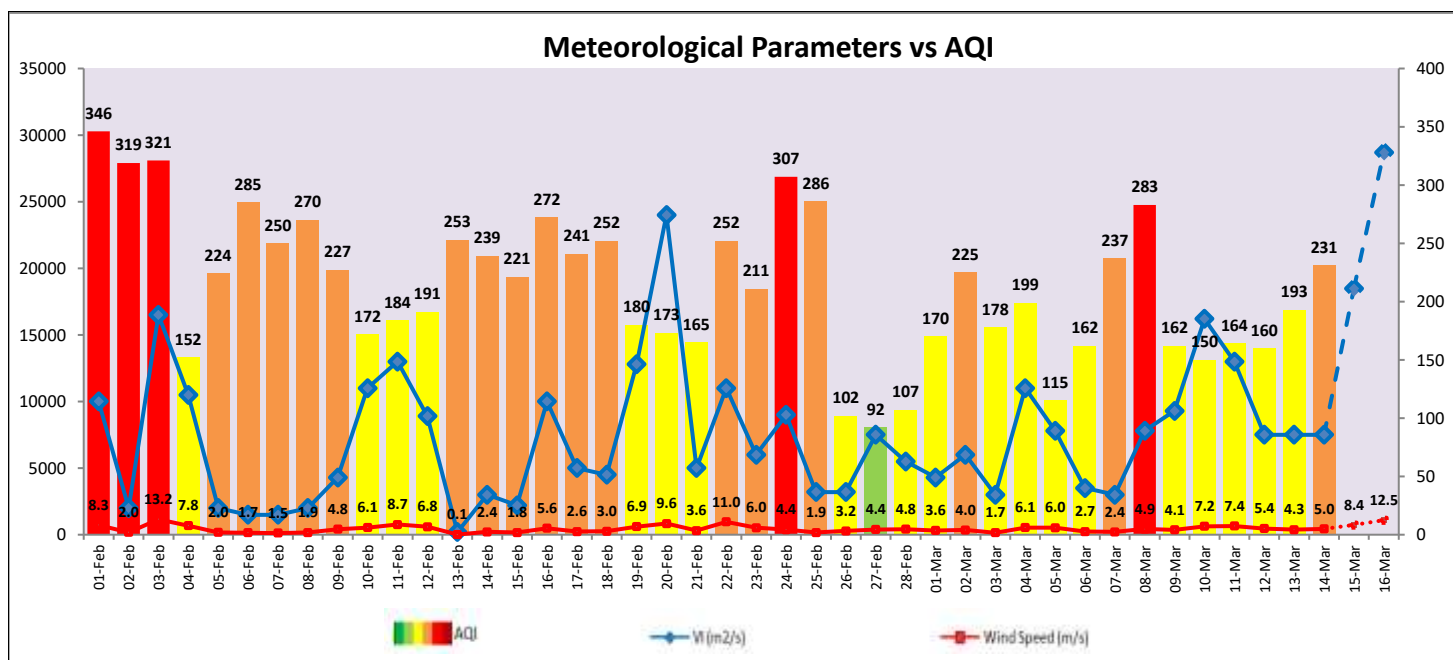
Parameters	March 15, 2022		March 16, 2022- March 17, 2022	
	Concentration	AQI Category	Concentration	AQI Category
PM <sub>10</sub>	252	Poor	275	Poor
PM <sub>2.5</sub>	112	Poor	122	Very Poor

## Wind Forecast for Delhi:

	Wind speed (at surface) in km/h		Wind speed (at 900 m) in km/h	Wind Direction	
	As per IMD (at 17:30 hrs.)	As per windy.com (at 16:00 hrs.)	As per windy.com (at 16:00hrs)	As per IMD (at 17:30hrs.)	As per windy.com at 900m
March 15, 2022	20	10	35	NW	W
March 16, 2022	32	16	53	NW	NW
March 17, 2022	12	06	21	N	NW

### IMD Alert for Tomorrow (15.03.2022):

The air quality is likely to remain in Moderate category on 15.03.2022 on 16.03.2022. The predominant surface wind is likely to be coming from West/Northwest direction of Delhi with wind speed 08-20 kmph and mainly clear sky tomorrow. Ventilation index is likely to be 18,500 m<sup>2</sup>/s.



### Hotspots for Today

City	Station Name	AQI value	Air Quality	Prominent Pollutant
Delhi	Anand Vihar, Delhi - DPCC	311	Very Poor	PM <sub>10</sub>
	NSIT Dwarka, Delhi - CPCB	297	Poor	PM <sub>2.5</sub>
	Dwarka-Sector 8, Delhi - DPCC	294	Poor	PM <sub>2.5</sub>
	Bawana, Delhi - DPCC	277	Poor	PM <sub>10</sub>
	Chandni Chowk, Delhi - IITM	275	Poor	PM <sub>10</sub>
Faridabad	Sector- 16A, Faridabad - HSPCB	260	Poor	O <sub>3</sub>
	Sector 30, Faridabad - HSPCB	220	Moderate	PM <sub>10</sub>
Gurugram	Sector-51, Gurugram - HSPCB	279	Poor	PM <sub>10</sub>
	Vikas Sadan, Gurugram - HSPCB	237	Moderate	PM <sub>2.5</sub>
Ghaziabad	Loni, Ghaziabad - UPPCB	306	Very Poor	PM <sub>2.5</sub>
	Vasundhara, Ghaziabad - UPPCB	280	Poor	PM <sub>10</sub>
Greater Noida	Knowledge Park - V, Greater Noida - UPPCB	255	Poor	O <sub>3</sub>
Noida	Sector-1, Noida - UPPCB	213	Moderate	PM <sub>2.5</sub>
	Sector-116, Noida - UPPCB	202	Moderate	PM <sub>10</sub>