



Central Pollution Control Board

Air Quality Status for Delhi &NCR

Dated – February 14, 2022



Current Air Quality Status:

Air Quality Index (AQI) (Average of past 24 hours)

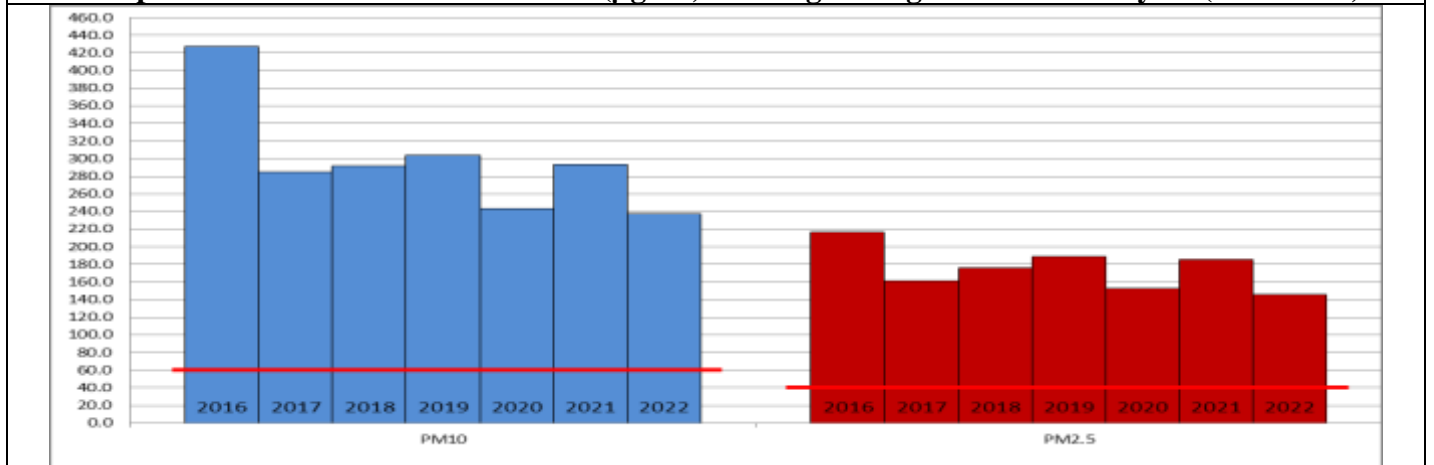
	Air Quality	AQI Value	Prominent Pollutant
Delhi	Poor	239↓	PM ₁₀ , PM _{2.5}
Faridabad	Poor	220↓	PM ₁₀
Ghaziabad	Poor	283↑	PM ₁₀ , PM _{2.5}
Greater Noida	Moderate	197↓	PM _{2.5}
Gurugram	Poor	213↓	PM _{2.5}
Noida	Poor	232	PM ₁₀ , PM _{2.5}

*Data available for 33 stations in Delhi today. # ↓ ↑ arrows indicate increase/decrease as compared to value on the previous day

Comparative status of AQI - Delhi from 01 January to 14 February 2016-2022

Category	Year	2016	2017	2018	2019	2020	2021	2022	2016	2017	2018	2019	2020	2021	2022
	No. of days	45	45	45	45	45	45	45							
Good (0–50)		0	0	0	0	0	0	0							
Satisfactory (51–100)		0	0	0	0	0	0	2	0	3	3	5	4	4	9
Moderate (101–200)		0	3	3	5	4	4	7							
Poor (201–300)		7	18	18	12	24	11	19							
Very Poor (301–400)		32	24	21	21	15	24	16	45	42	42	40	41	41	36
Severe (>401)		6	0	3	7	2	6	1							

Comparative status of PM_{2.5} and PM₁₀ (µg/m³) running average – Till February 13 (2016-2022)



Hotspots for Today:

*Details given overleaf

Delhi	Anand Vihar, Narela, Vivek Vihar, Wazirpur, Rohini	Gurugram	Vikas Sadan, Sector-51
Faridabad	Sector-30, New Industrial Town	Greater Noida	Knowledge Park – V
Ghaziabad	Indirapuram, Loni	Noida	Sector -116, Sector - 125

Forecast by IITM:

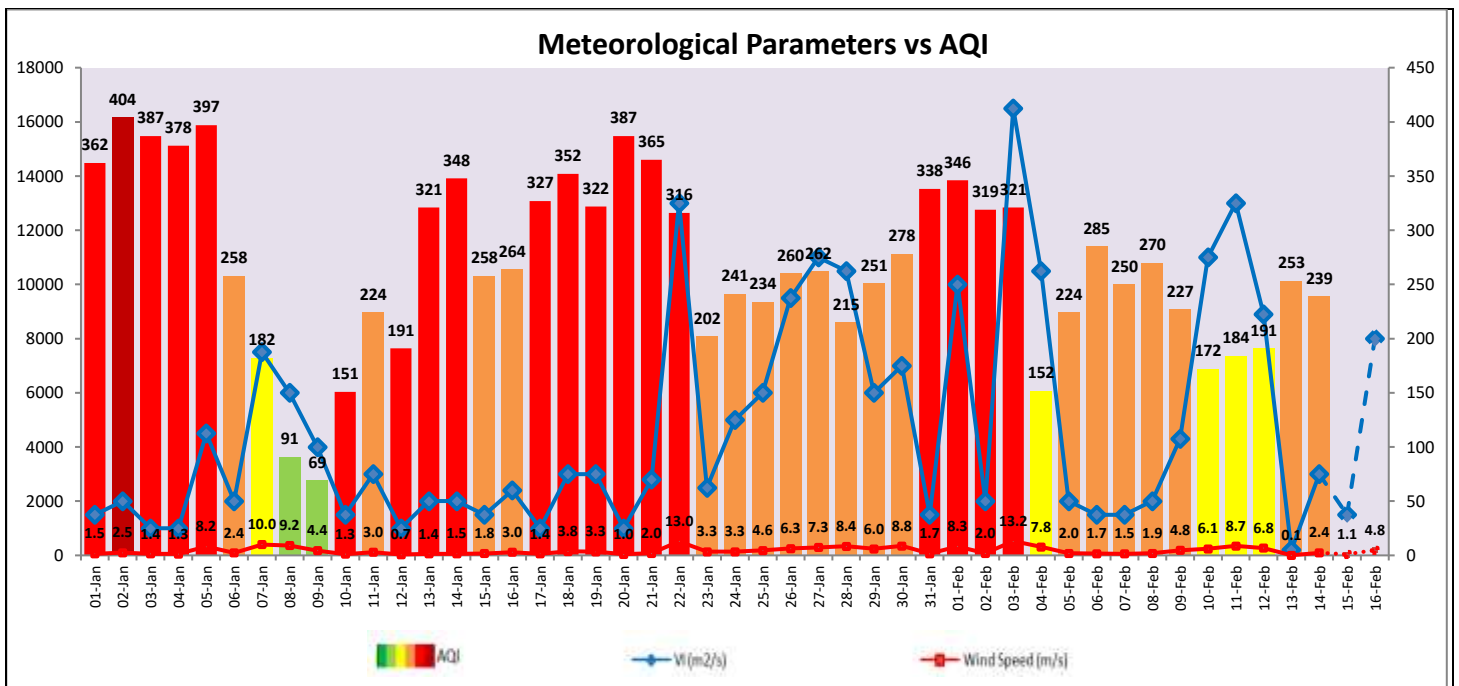
Parameters	February 15, 2022		February 16, 2022- February 17, 2022	
	Concentration	AQI Category	Concentration	AQI Category
PM ₁₀	259	Poor	307	Poor
PM _{2.5}	125	Very Poor	148	Very Poor

▪ **Wind Forecast for Delhi:**

	Wind speed (at surface) in km/h		Wind speed (at 900 m) in km/h	Wind Direction	
	As per IMD (at 17:30 hrs.)	As per windy.com (at 16:00 hrs.)	As per windy.com (at 16:00hrs)	As per IMD (at 17:30hrs.)	As per windy.com at 900m
February 15, 2022	04	06	13	N	NW
February 16, 2022	12	07	25	NW	NW
February 17, 2022	10	06	17	NW	NW

▪ **IMD Alert for Tomorrow (15.02.2022):**

The air quality is likely to remain in Poor category tomorrow. The predominant surface wind is likely to be calm during morning hours and coming from North direction of Delhi with wind speed 04 kmph, mainly clear sky and mist in the morning tomorrow. The ventilation index is likely to be 1,500 m²/s.



▪ **Hotspots for Today**

City	Station Name	AQI value	Air Quality	Prominent Pollutant
Delhi	Anand Vihar, Delhi - DPCC	351	Very Poor	PM ₁₀
	Narela, Delhi - DPCC	303	Very Poor	PM ₁₀
	Vivek Vihar, Delhi - DPCC	293	Poor	PM _{2.5}
	Wazirpur, Delhi - DPCC	293	Poor	PM ₁₀
	Rohini, Delhi - DPCC	292	Poor	PM ₁₀
Faridabad	New Industrial Town, Faridabad - HSPCB	306	Poor	PM ₁₀
	Sector 30, Faridabad - HSPCB	133	Moderate	PM ₁₀
Gurugram	Sector-51, Gurugram - HSPCB	271	Poor	PM _{2.5}
	Vikas Sadan, Gurugram - HSPCB	189	Moderate	PM _{2.5}
Ghaziabad	Loni, Ghaziabad - UPPCB	345	Very Poor	PM _{2.5}
	Indrapuram, Ghaziabad - UPPCB	272	Poor	PM ₁₀
Greater Noida	Knowledge Park - V, Greater Noida - UPPCB	211	Poor	PM _{2.5}
Noida	Sector - 125, Noida - UPPCB	262	Poor	PM _{2.5}
	Sector-116, Noida - UPPCB	240	Poor	PM ₁₀