



# Central Pollution Control Board

## Air Quality Status for Delhi &NCR

Dated – January 14, 2022



### Current Air Quality Status:

#### Air Quality Index (AQI) (Average of past 24 hours)

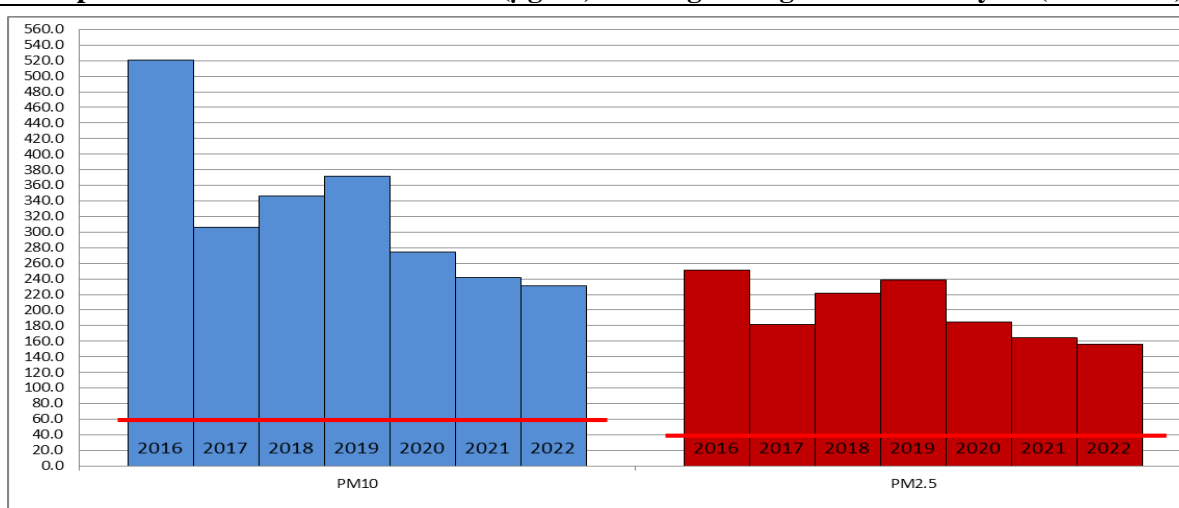
	Air Quality	AQI Value	Prominent Pollutant
Delhi	Very Poor	348↑	PM <sub>2.5</sub>
Faridabad	Very Poor	315↑	PM <sub>2.5</sub>
Ghaziabad	Poor	285↓	PM <sub>2.5</sub>
Greater Noida	Very Poor	305↓	PM <sub>2.5</sub>
Gurugram	Very Poor	383↑	PM <sub>2.5</sub>
Noida	Very Poor	319↑	PM <sub>2.5</sub>

\*Data available for 36 stations in Delhi today. # ↓, ↑ arrows indicate increase/decrease as compared to value on the previous day

#### Comparative status of AQI - Delhi from 01 January to 14 January 2016-2022

Category	Year	2016	2017	2018	2019	2020	2021	2022	2016	2017	2018	2019	2020	2021	2022
		No. of days													
Good (0–50)		0	0	0	0	0	0	0							
Satisfactory (51–100)		0	0	0	0	0	0	2	0	0	0	0	0	2	5
Moderate (101–200)		0	0	0	0	0	2	3							
Poor (201–300)		0	4	2	3	6	6	2							
Very Poor (301–400)		11	10	10	6	6	3	6	14	14	14	14	14	12	9
Severe (>401)		3	0	2	5	2	3	1							

#### Comparative status of PM<sub>2.5</sub> and PM<sub>10</sub> (µg/m<sup>3</sup>) running average – Till January 13 (2016-2022)



#### Hotspots for Today:

\*Details given overleaf (\*\* as per 3 pm data as 4 pm data was unavailable)

Delhi	Patparganj, Nehru Nagar, Okhla Phase-2, Dwarka-Sec-08, Dr. Karni Singh Shooting Range	Gurugram	NISE Gwal Pahari, Sector-51
Faridabad	Sector-16A, Sector-30	Greater Noida	Knowledge Park – III
Ghaziabad	Indirapuram, Loni	Noida	Sector -125, Sector - 1

#### Forecast by IITM:

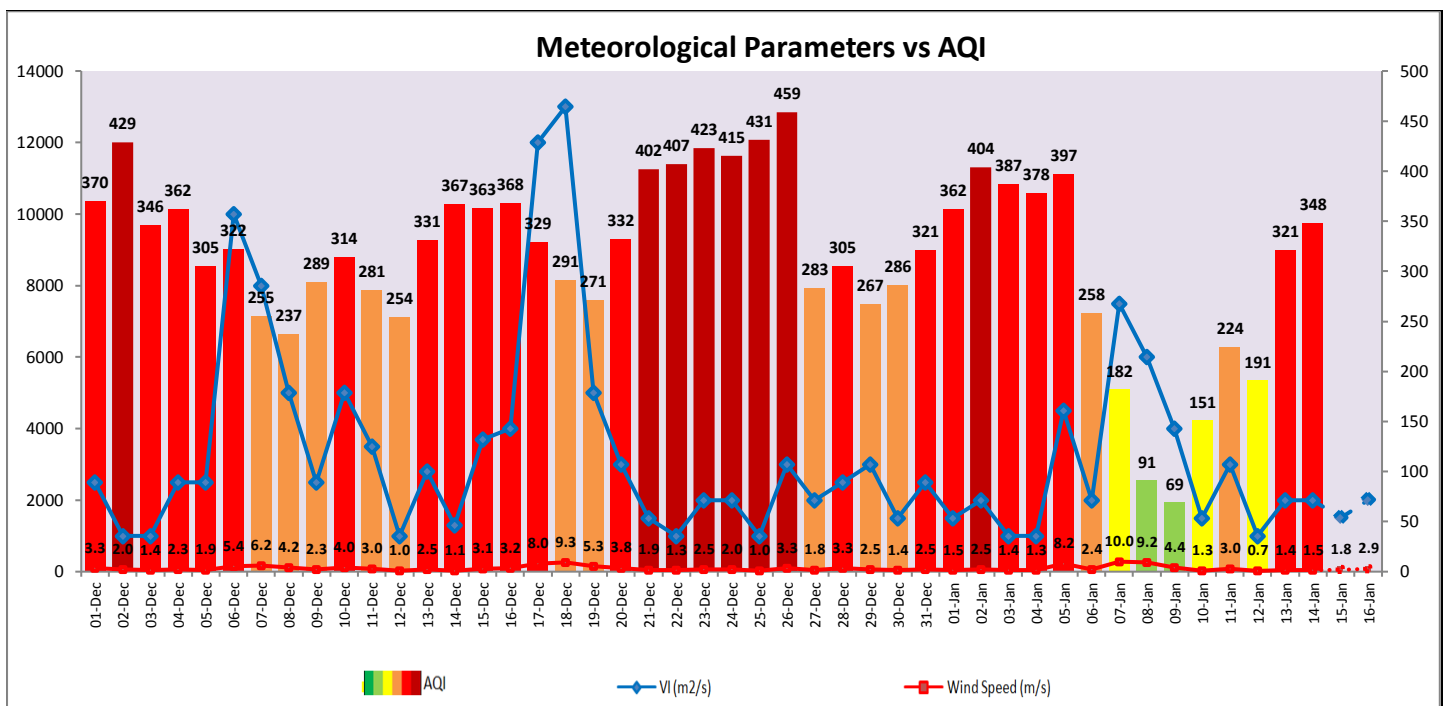
Parameters	January 15, 2022		January 16, 2022-January 17, 2022	
	Concentration	AQI Category	Concentration	AQI Category
PM <sub>10</sub>	340	Poor	312	Poor
PM <sub>2.5</sub>	204	Very Poor	187	Very Poor

▪ **Wind Forecast for Delhi:**

	Wind speed (at surface) in km/h		Wind speed (at 900 m) in km/h	Wind Direction	
	As per IMD (at 17:30 hrs.)	As per windy.com (at 16:00 hrs.)	As per windy.com (at 16:00hrs)	As per IMD (at 17:30hrs.)	As per windy.com at 900m
January 15, 2022	15	08	09	NW	NW
January 16, 2022	05	09	18	WNW	NW
January 17, 2022	05	09	15	NW	NW

▪ **IMD Alert for Tomorrow (15.01.2022):**

The air quality is likely to remain in upper end of Very Poor category on 15.01.2022 and Very Poor category on 16.01.2022. The predominant surface wind is likely to be coming from Northwest direction of Delhi with wind speed 05-15 kmph, partly cloudy sky, and dense fog in the morning and cold day conditions at isolated places. Ventilation index is likely to be 1,500 m<sup>2</sup>/s.



▪ **Hotspots for Today**

(\*\* as per 3 pm data as 4 pm data was unavailable)

City	Station Name	AQI value	Air Quality	Prominent Pollutant
Delhi	Patparganj, Delhi - DPCC	422	Severe	PM <sub>2.5</sub>
	Nehru Nagar, Delhi - DPCC	414	Severe	PM <sub>2.5</sub>
	Okhla Phase-2, Delhi - DPCC	414	Severe	PM <sub>2.5</sub>
	Dwarka-Sector 8, Delhi - DPCC	406	Severe	PM <sub>2.5</sub>
	Dr. Karni Singh Shooting Range, Delhi - DPCC	405	Severe	PM <sub>2.5</sub>
Faridabad	Sector- 16A, Faridabad - HSPCB	429	Severe	PM <sub>2.5</sub>
	Sector 30, Faridabad - HSPCB	413	Severe	PM <sub>2.5</sub>
Gurugram	Sector-51, Gurugram - HSPCB	423	Severe	PM <sub>2.5</sub>
	NISE Gwal Pahari, Gurugram - IMD	386	Very Poor	PM <sub>2.5</sub>
Ghaziabad	Loni, Ghaziabad - UPPCB	317	Very Poor	PM <sub>2.5</sub>
	Indirapuram, Ghaziabad - UPPCB	275	Poor	PM <sub>2.5</sub>
Greater Noida	Knowledge Park - III, Greater Noida - UPPCB	316	Very Poor	PM <sub>2.5</sub>
Noida	Sector-1, Noida - UPPCB	368	Very Poor	PM <sub>2.5</sub>
	Sector - 125, Noida - UPPCB	317	Very Poor	PM <sub>2.5</sub>