



Central Pollution Control Board

Air Quality Status for Delhi & NCR

Dated – December 13, 2023



Current Air Quality Status:

Air Quality Index (AQI) (Average of past 24 hours at 4 PM) in comparison with last two years

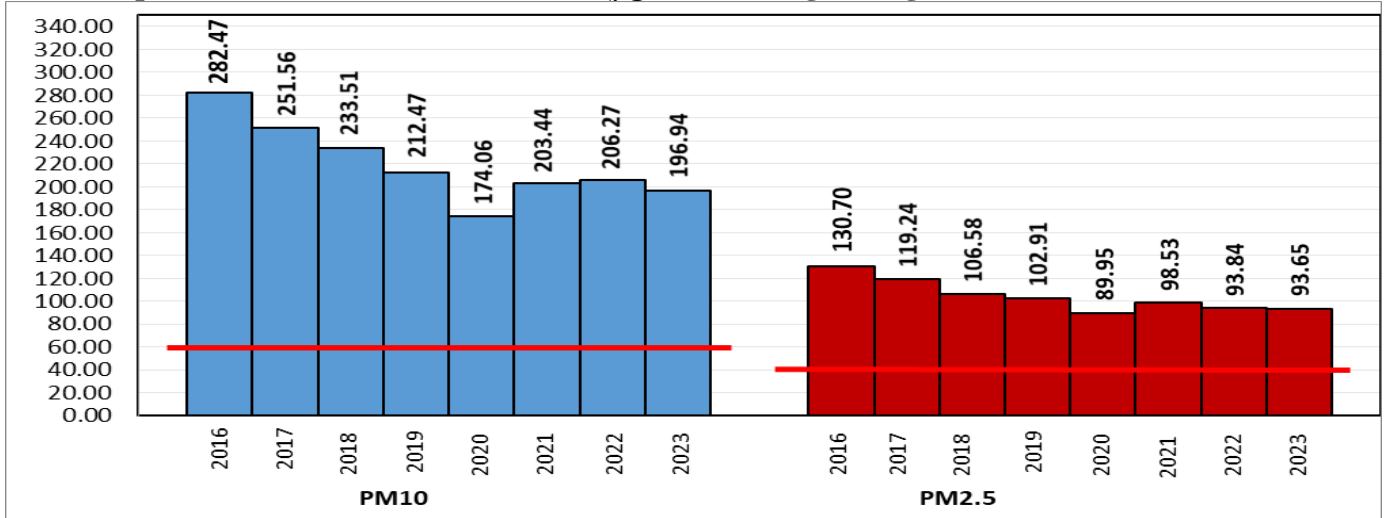
	2023			2022			2021(Covid- Year)		
	Air Quality	AQI Value	Prominent Pollutant	Air Quality	AQI Value	Prominent Pollutant	Air Quality	AQI Value	Prominent Pollutant
Delhi	Very Poor	378↑	PM2.5	Moderate	177↓	PM10, PM2.5	Very Poor	331↑	PM2.5
Faridabad	Poor	300↑	PM2.5	Moderate	191↑	PM10, PM2.5	Very Poor	317↑	PM10, PM2.5
Ghaziabad	Very Poor	314↑	PM10, PM2.5	Moderate	159↑	PM10	Very Poor	310↑	PM2.5
Greater Noida	Very Poor	334↓	PM2.5	Moderate	192↑	PM10	Poor	272↑	PM2.5
Gurugram	Poor	260↓	PM2.5	Moderate	191↑	PM2.5	Poor	253↑	PM2.5
Noida	Very Poor	318↓	PM10, PM2.5	Moderate	136↓	PM2.5	Very Poor	312↑	PM10, PM2.5

*Data available for 35(2023), 36(2022), 37(2021) stations in Delhi today. # ↑, ↓ arrows indicate a decrease/increase as compared to the value on the previous day.

Comparative status of AQI - Delhi from 01 January to 13 December 2016-2023

Category	Year	2016	2017	2018	2019	2020	2021	2022	2023	2016	2017	2018	2019	2020	2021	2022	2023
	No. of days	336	347	347	347	348	347	347	347								
Good (0-50)		0	2	0	2	4	1	3	1								
Satisfactory (51-100)		24	45	53	59	96	72	65	60	110	152	157	179	226	197	161	206
Moderate (101-200)		86	105	104	118	126	124	93	145								
Poor (201-300)		119	107	110	100	67	75	129	75								
Very Poor (301-400)		82	80	65	50	43	57	52	54	226	195	190	168	122	150	186	141
Severe (>401)		25	8	15	18	12	18	5	12								

Comparative status of PM₁₀ and PM_{2.5} (µg/m³) running average - Till December 12 (2016- 2023)



*Red line shows the annual average concentration standards for PM₁₀ and PM_{2.5}.

Daily Average of Particulates in Delhi (24 hourly average value; from 06:00am of 12.12.23 to 06:00 am of 13.12.23)

Date ↓ / parameter →	PM _{2.5} (µg/m ³)	PM ₁₀ (µg/m ³)
12- December -2023	232↑	386↑

Hotspots for Today:

*Details given below

Delhi	Nehru Nagar, Jahangirpuri, Wazirpur, Vivek Vihar, Anand Vihar,	Ghaziabad	Loni,
Faridabad	New Industrial Town, Sector- 16A	Greater Noida	Knowledge Park -V
Gurugram	Teri Gram, Sector-51	Noida	Sector - 116, Sector-62, Sector-125

Forecast by IITM (Delhi):

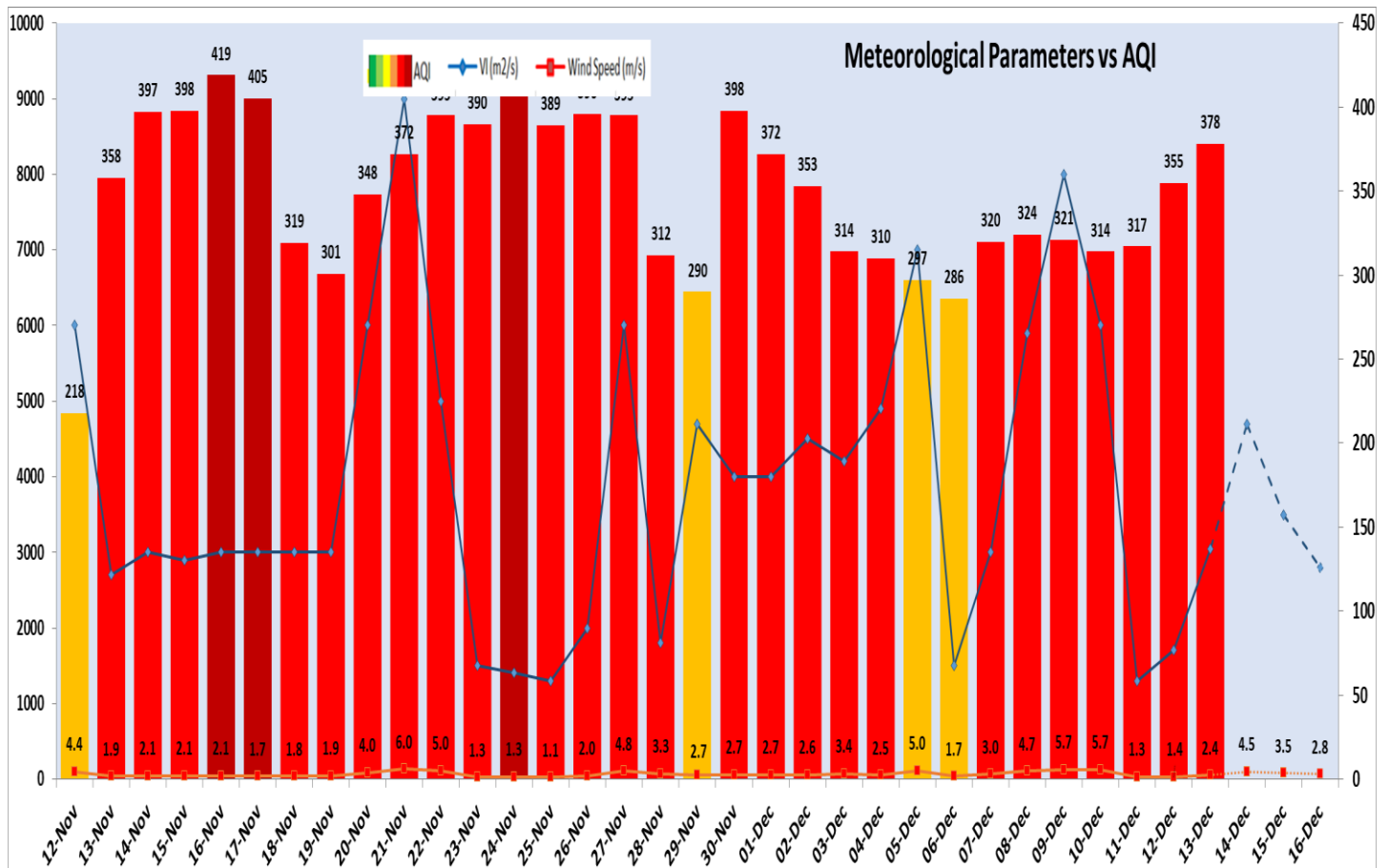
	Dec 14, 2023	Dec 15, 2023	Dec 16, 2023
AQI Category	Very Poor	Very Poor	Very Poor

Wind Forecast for Delhi:

	Wind speed (at surface) in km/h		Wind speed (at 900 m) in km/h	Wind Direction	
	As per IMD (range)	As per windy.com (at 16:00 hrs.)	As per windy.com (at 16:00hrs)	As per IMD	As per windy.com at 900m
Dec 14. 2023	06 TO 12	9	24	NW	NW
Dec 15. 2023	04 TO 08	7	12	NW	NW
Dec 16. 2023	04 TO 08	6	10	VAR	W

IMD Alert for Tomorrow (14.12.2023):

The air quality is likely to remain in Very Poor category from 14.12.2023 to 16.12.2023. The predominant surface wind is likely to be coming from West/Northwest directions in Delhi with wind speed upto 06-12 kmph, partly cloudy sky and shallow fog in the morning on 14.12.2023. Ventilation index is likely to be 4700 m²/s.



Delhi Temperature in (°C)		
Date	Minimum	Maximum
10-12-2023	8.3	25.3
11-12-2023	6.5	23.4
12-12-2023	6.8	24.8
13-12-2023	7.4	24.8

▪ **Hotspots for Today**

City	Station Name	AQI value	Air Quality	Prominent Pollutant
Delhi	Nehru Nagar, Delhi - DPCC	426	Severe	PM _{2.5}
	Jahangirpuri, Delhi - DPCC	425	Severe	PM _{2.5}
	Wazirpur, Delhi - DPCC	425	Severe	PM _{2.5}
	Vivek Vihar, Delhi - DPCC	422	Severe	PM _{2.5}
	Anand Vihar, Delhi - DPCC	417	Severe	PM _{2.5}
Faridabad	New Industrial Town, Faridabad - HSPCB	384	Very Poor	PM _{2.5}
	Sector- 16A, Faridabad - HSPCB	355	Very Poor	PM _{2.5}
Gurugram	Teri Gram, Gurugram - HSPCB	305	Very Poor	PM _{2.5}
	Sector-51, Gurugram - HSPCB	280	Poor	PM _{2.5}
Ghaziabad	Loni, Ghaziabad - UPPCB	365	Very Poor	PM _{2.5}
Greater Noida	Knowledge Park - V, Greater Noida - UPPCB	361	Very Poor	PM _{2.5}
Noida	Sector-116, Noida - UPPCB	387	Very Poor	PM _{2.5}
	Sector - 62, Noida - IMD	341	Very Poor	PM _{2.5}
	Sector - 125, Noida - UPPCB	325	Very Poor	PM ₁₀