



Central Pollution Control Board

Air Quality Status for Delhi & NCR

Dated – December 13, 2022



Current Air Quality Status:

Air Quality Index (AQI) (Average of past 24 hours)

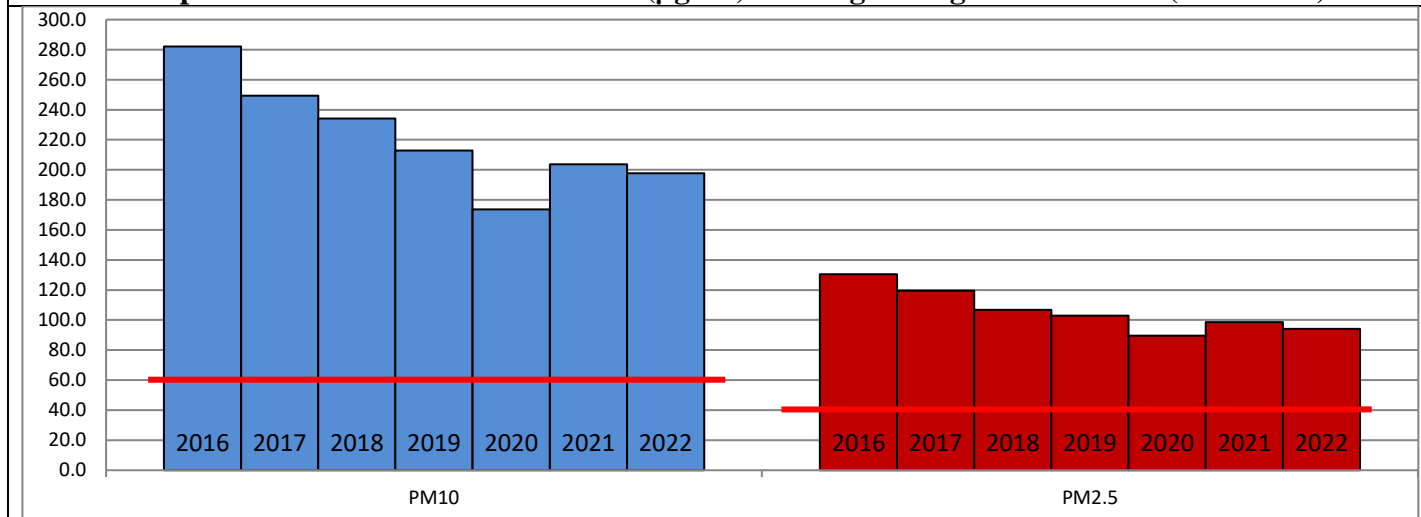
	Air Quality	AQI Value	Prominent Pollutant
Delhi	Moderate	177 ↓	PM ₁₀ , PM _{2.5}
Faridabad	Moderate	191 ↑	PM ₁₀ , PM _{2.5}
Ghaziabad	Moderate	159 ↑	PM ₁₀
Greater Noida	Moderate	192 ↑	PM ₁₀
Gurugram	Moderate	191 ↑	PM _{2.5}
Noida	Moderate	136 ↓	PM _{2.5}

*Data available for 36 stations in Delhi today. # ↓ ↑ arrows indicate a decrease/increase as compared to the value on the previous day.

Comparative status of AQI - Delhi from 01 January to 13 December 2016-2022

Category	Year	2016	2017	2018	2019	2020	2021	2022	2016	2017	2018	2019	2020	2021	2022
	No. of days	336	347	347	347	348	347	347							
Good (0–50)		0	2	0	2	5	1	3							
Satisfactory (51–100)		24	45	53	59	95	81	65	110	151	159	179	226	197	161
Moderate (101–200)		86	104	106	118	126	115	93							
Poor (201–300)		119	109	111	101	67	75	129							
Very Poor (301–400)		85	79	63	48	43	57	52	226	196	188	168	122	150	186
Severe (>401)		22	8	14	19	12	18	5							

Comparative status of PM₁₀ and PM_{2.5} (µg/m³) running average – Till Dec 12 (2016-2022)



Hotspots for Today:

*Details given overleaf

Delhi	NSIT Dwarka, Dwarka-Sector 8, Nehru Nagar, Shadipur, Sirifort	Ghaziabad	Vasundhara
Faridabad	Sector-30, New Industrial Town	Greater Noida	Knowledge Park-V
Gurugram	Sector-51, Teri Gram	Noida	Sector – 62

Forecast by IITM (Delhi):

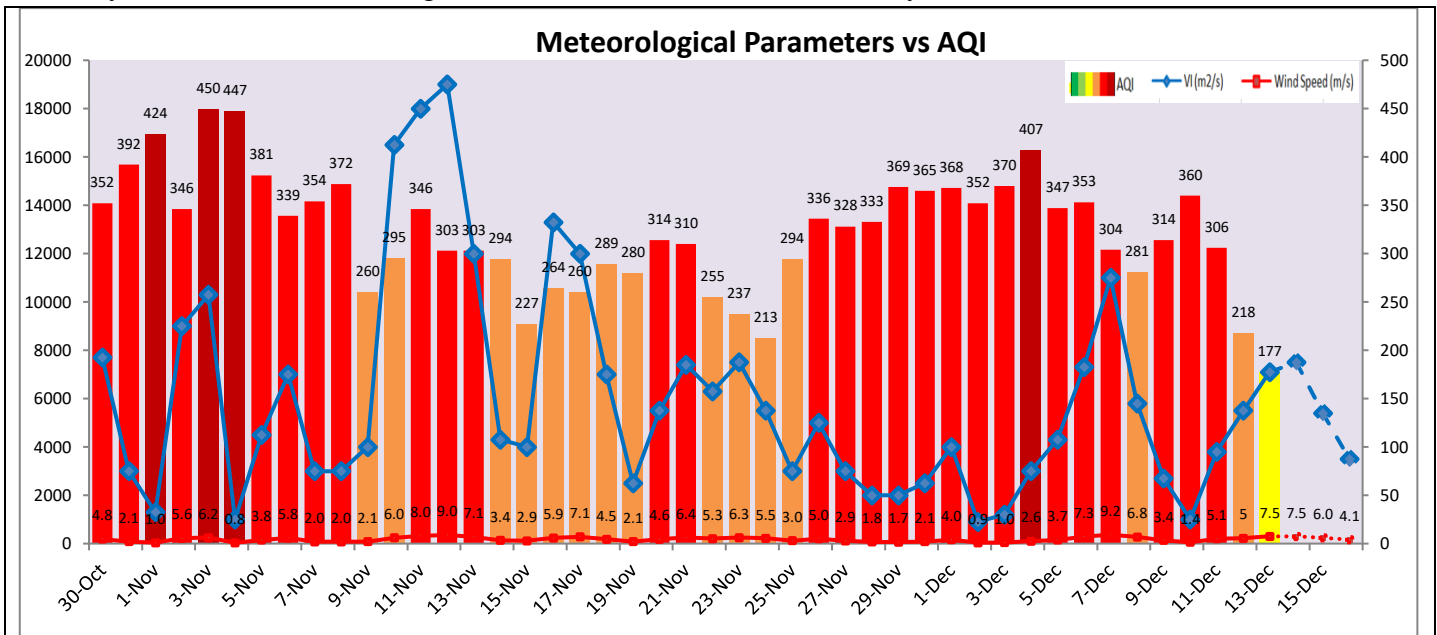
	Dec 14, 2022		Dec 15, 2022- Dec 16, 2022	
	Concentration	AQI Category	Concentration	AQI Category
PM ₁₀	145	Moderate	170	Moderate
PM _{2.5}	65	Moderate	72	Moderate

Wind Forecast for Delhi:

	Wind speed (at surface) in km/h		Wind speed (at 900 m) in km/h	Wind Direction	
	As per IMD (range)	As per windy.com (at 16:00 hrs.)	As per windy.com (at 16:00hrs)	As per IMD	As per windy.com at 900m
Dec 14, 2022	Upto 12	10	36	NW	NW
Dec 15, 2022	08-12	10	34	W	NW
Dec 16, 2022	06-08	11	25	NW	NW

IMD Alert for Tomorrow (14.12.2022):

The air quality is likely to improve further and remain in Moderate category on 14.12.2022. The predominant surface wind is likely to be coming from Northwest directions in Delhi with wind speed upto 12 kmph, mainly clear sky and mist in the morning tomorrow. Ventilation index is likely to be 7,500 m²/s.



Hotspots for Today

City	Station Name	AQI value	Air Quality	Prominent Pollutant
Delhi	NSIT Dwarka, Delhi - CPCB	314	Very Poor	PM _{2.5}
	Dwarka-Sector 8, Delhi - DPCC	238	Poor	PM _{2.5}
	Nehru Nagar, Delhi - DPCC	232	Poor	PM _{2.5}
	Shadipur, Delhi - CPCB	225	Poor	PM _{2.5}
	Sirifort, Delhi - CPCB	211	Poor	PM ₁₀
Faridabad	Sector 30, Faridabad - HSPCB	233	Poor	PM _{2.5}
	New Industrial Town, Faridabad - HSPCB	202	Poor	PM ₁₀
Gurugram	Sector-51, Gurugram - HSPCB	257	Poor	PM _{2.5}
	Teri Gram, Gurugram - HSPCB	223	Poor	PM _{2.5}
Ghaziabad	Vasundhara, Ghaziabad - UPPCB	195	Moderate	PM ₁₀
Greater Noida	Knowledge Park - V, Greater Noida - UPPCB	198	Moderate	PM ₁₀
Noida	Sector - 62, Noida - IMD	158	Moderate	PM _{2.5}