



Central Pollution Control Board

Air Quality Status for Delhi & NCR

Dated – November 13, 2022



Current Air Quality Status:

Air Quality Index (AQI) (Average of past 24 hours)

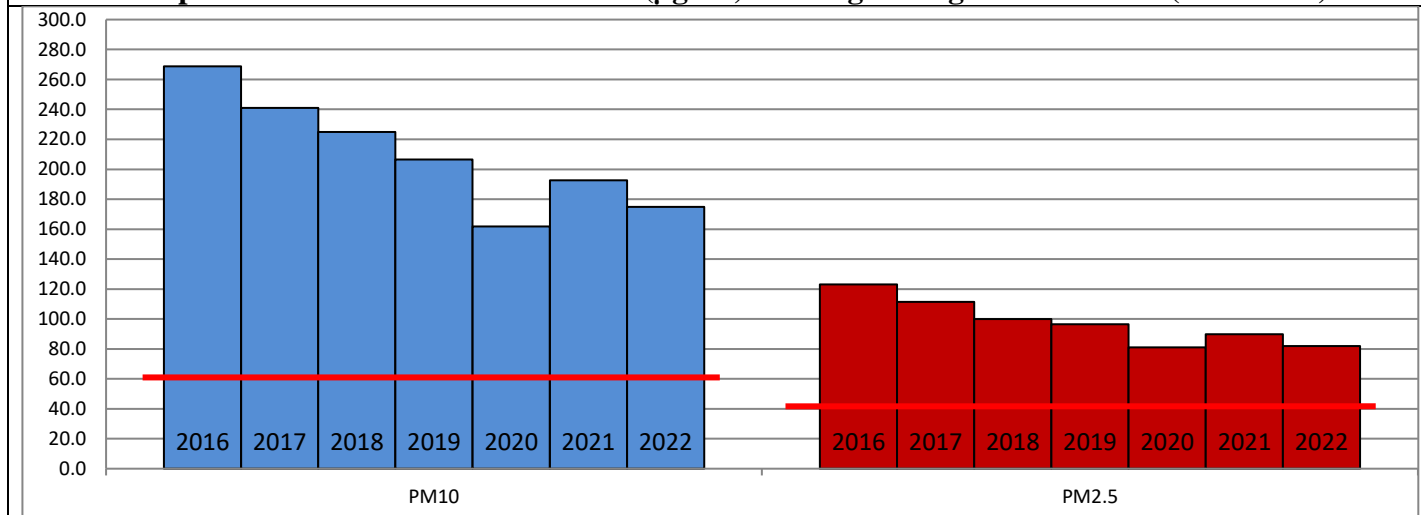
	Air Quality	AQI Value	Prominent Pollutant
Delhi	Very Poor	303	PM _{2.5}
Faridabad	Poor	272 ↓	PM _{2.5}
Ghaziabad	Poor	230 ↓	PM _{2.5}
Greater Noida	Poor	234 ↓	PM _{2.5}
Gurugram	Poor	282 ↓	PM _{2.5}
Noida	Poor	231 ↓	PM _{2.5}

*Data available for 36 stations in Delhi today. # ↓ ↑ arrows indicate a decrease/increase as compared to the value on the previous day.

Comparative status of AQI - Delhi from 01 January to 13 November 2016-2022

Category	Year	2016	2017	2018	2019	2020	2021	2022	2016	2017	2018	2019	2020	2021	2022
	No. of days	306	317	317	317	318	317	317							
Good (0–50)		0	2	0	2	5	1	3							
Satisfactory (51–100)		24	45	53	58	95	81	65	110	150	158	175	224	197	160
Moderate (101–200)		86	103	105	115	124	115	92							
Poor (201–300)		116	102	104	90	56	69	117							
Very Poor (301–400)		62	57	43	38	30	38	36	196	167	159	142	94	120	157
Severe (>401)		18	8	12	14	8	13	4							

Comparative status of PM₁₀ and PM_{2.5} (µg/m³) running average – Till Nov 12 (2016-2022)



Hotspots for Today:

*Details given overleaf

Delhi	NSIT Dwarka Jahangirpuri, Shadipur, Patparganj, Anand Vihar	Ghaziabad	Vasundhara, Loni
Faridabad	Sector- 16A, Sector-11	Greater Noida	Knowledge Park-III
Gurugram	Teri Gram, Sector-51	Noida	Sector – 116, Sector-62

Forecast by IITM (Delhi):

	Nov 14, 2022		Nov 15, 2022- Nov 16, 2022	
	Concentration	AQI Category	Concentration	AQI Category
PM ₁₀	242	Moderate	264	Poor
PM _{2.5}	134	Very Poor	146	Very Poor

Wind Forecast for Delhi:

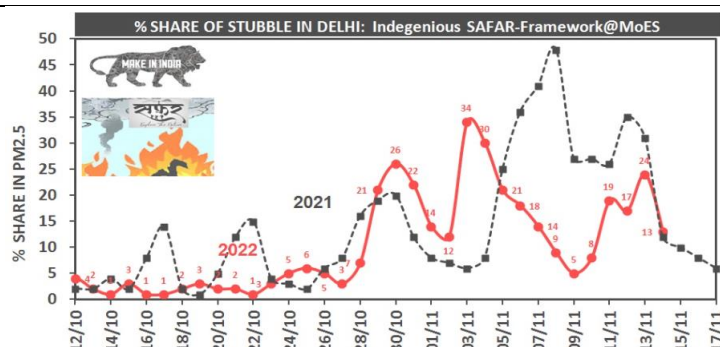
	Wind speed (at surface) in km/h		Wind speed (at 900 m) in km/h	Wind Direction	
	As per IMD (range)	As per windy.com (at 16:00 hrs.)	As per windy.com (at 16:00hrs)	As per IMD	As per windy.com at 900m
Nov 14, 2022	08-16	04	06	VAR	SE
Nov 15, 2022	18-24	05	13	NNW	W
Nov 16, 2022	12-20	09	28	NW	NW

IMD Alert for Tomorrow (14.11.2022):

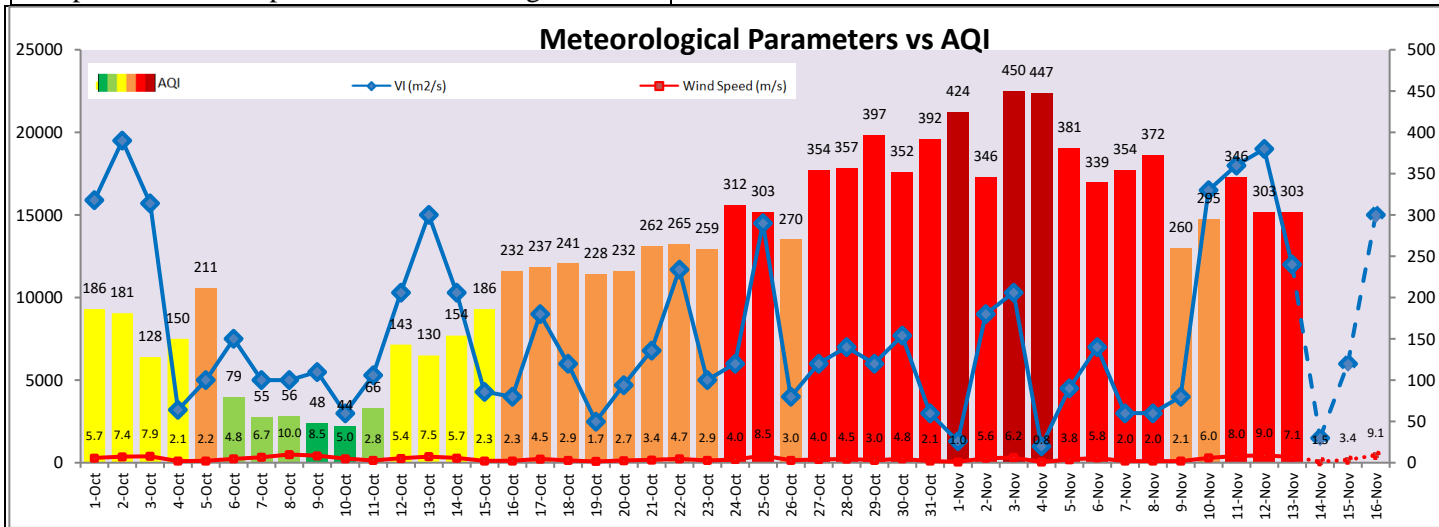
The air quality is likely to deteriorate and reach in Very Poor category on 14.11.2022. The predominant surface wind is likely to be coming from variable direction in Delhi with wind speed 08-16 kmph, partly cloudy sky and mist in the morning tomorrow. Ventilation index is likely to be 1,500 m²/s.

Active Fire Events (AFE):

Date	Punjab		Haryana	
	Nos. on the day	Total since September 15	Nos. on the day	Total since September 15
12.11.2022	2467	43144	99	2979
12.11.2021	3403	59121	127	5190



* As per IITM, the impact of stubble burning is ~24%.



Hotspots for Today

*Data not available for 04:00PM

City	Station Name	AQI value	Air Quality	Prominent Pollutant
Delhi	NSIT Dwarka, Delhi - CPCB	407	Severe	PM _{2.5}
	Jahangirpuri, Delhi - DPCC	340	Very Poor	PM _{2.5}
	Anand Vihar, Delhi - DPCC	333	Very Poor	PM ₁₀
	Patparganj, Delhi - DPCC	333	Very Poor	PM _{2.5}
	Shadipur, Delhi - CPCB	332	Very Poor	PM _{2.5}
Faridabad	Sector- 16A, Faridabad - HSPCB	311	Very Poor	PM _{2.5}
	Sector 11, Faridabad - HSPCB	301	Very Poor	PM _{2.5}
Gurugram	Sector-51, Gurugram - HSPCB	314	Very Poor	PM _{2.5}
	Teri Gram, Gurugram - HSPCB	297	Poor	PM _{2.5}
Ghaziabad	Vasundhara, Ghaziabad - UPPCB	261	Poor	PM _{2.5}
	Loni, Ghaziabad - UPPCB	235	Poor	PM _{2.5}
Greater Noida	Knowledge Park - III, Greater Noida - UPPCB	282	Poor	PM _{2.5}
Noida	Sector - 62, Noida - IMD	304	Very Poor	PM _{2.5}
	Sector-116, Noida - UPPCB	235	Poor	PM _{2.5}