



Central Pollution Control Board

Air Quality Status for Delhi & NCR

Dated – November 13, 2021



Current Air Quality Status:

Air Quality Index (AQI) (Average of past 24 hours)

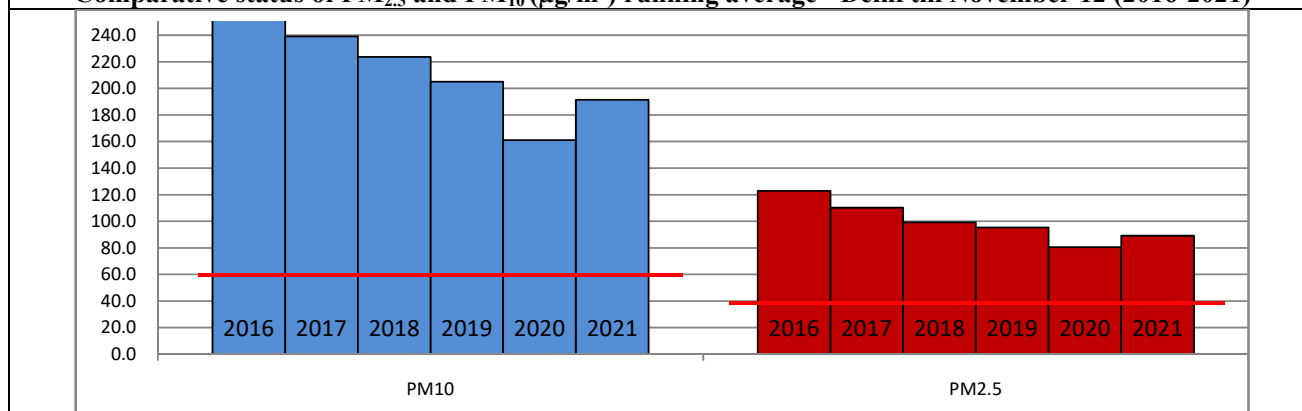
	Air Quality	AQI Value	Prominent Pollutant
Delhi	Severe	437 ↓	PM ₁₀ , PM _{2.5}
Faridabad	Severe	423 ↓	PM ₁₀ , PM _{2.5}
Ghaziabad	Severe	441 ↓	PM _{2.5}
Greater Noida	Severe	408 ↓	PM _{2.5}
Gurugram	Severe	441 ↓	PM _{2.5}
Noida	Severe	464 ↓	PM ₁₀ , PM _{2.5}

*Data available for 32 stations in Delhi today. # ↓, ↑ arrows indicate increase/decrease as compared to value on the previous day

Comparative status of AQI - Delhi from 01 January to 13 November 2016-2021

Category	Year	2016	2017	2018	2019	2020	2021	2016	2017	2018	2019	2020	2021
	No. of days	306	317	317	317	318	317						
Good (0–50)		0	2	0	2	5	1						
Satisfactory (51–100)		25	45	53	58	95	72	108	150	158	175	224	197
Moderate (101–200)		83	103	105	115	124	124						
Poor (201–300)		116	102	104	90	56	69						
Very Poor (301–400)		64	57	43	38	30	38	198	167	159	142	94	120
Severe (>401)		18	8	12	14	8	13						

Comparative status of PM_{2.5} and PM₁₀ (µg/m³) running average - Delhi till November 12 (2016-2021)



* The PM values are 24 hourly averages (6 am to 6 am)

Hotspots for Today:

*Details given overleaf

Delhi	Major Dhyan Chand National Stadium, Dwarka-Sector 8, Patparganj, Jawaharlal Nehru Stadium, CRRI Mathura Road	Greater Noida	Knowledge Park –III
Faridabad	Sector 11, Sector 16 A	Gurugram	VikasSadan, NISE Gwal Pahari, Teri Gram
Ghaziabad	Loni, Indirapuram	Noida	Sector – 1, Sector –116

Forecast by IITM:

Parameters	November 14, 2021		November 15, 2021– November 16, 2021	
	Concentration	AQI Category	Concentration	AQI Category
PM ₁₀	393	Very Poor	416	Very Poor
PM _{2.5}	247	Very Poor	262	Severe

▪ **Wind Forecast for Delhi:**

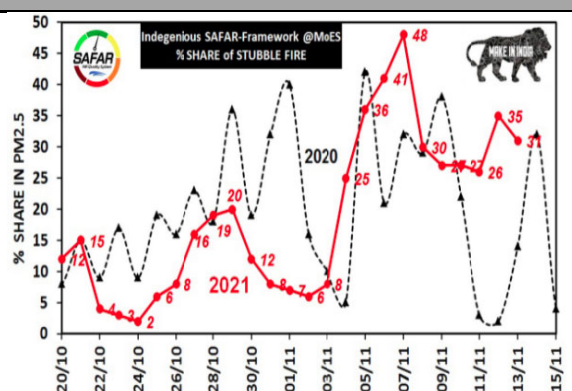
Dates	Wind speed (at surface) in km/h		Wind speed (at 900 m) in km/h	Wind Direction	
	As per IMD (at 17:30 hrs.)	As per windy.com (at 16:00 hrs.)	As per windy.com (at 16:00hrs)	As per IMD (at 17:30hrs.)	As per windy.com at 900m
November 14, 2021	CALM	05	09	-	W
November 15, 2021	CALM	10	18	-	NW
November 16, 2021	CALM	03	10	-	NW

▪ **IMD Alert for Tomorrow (14.11.2021):**

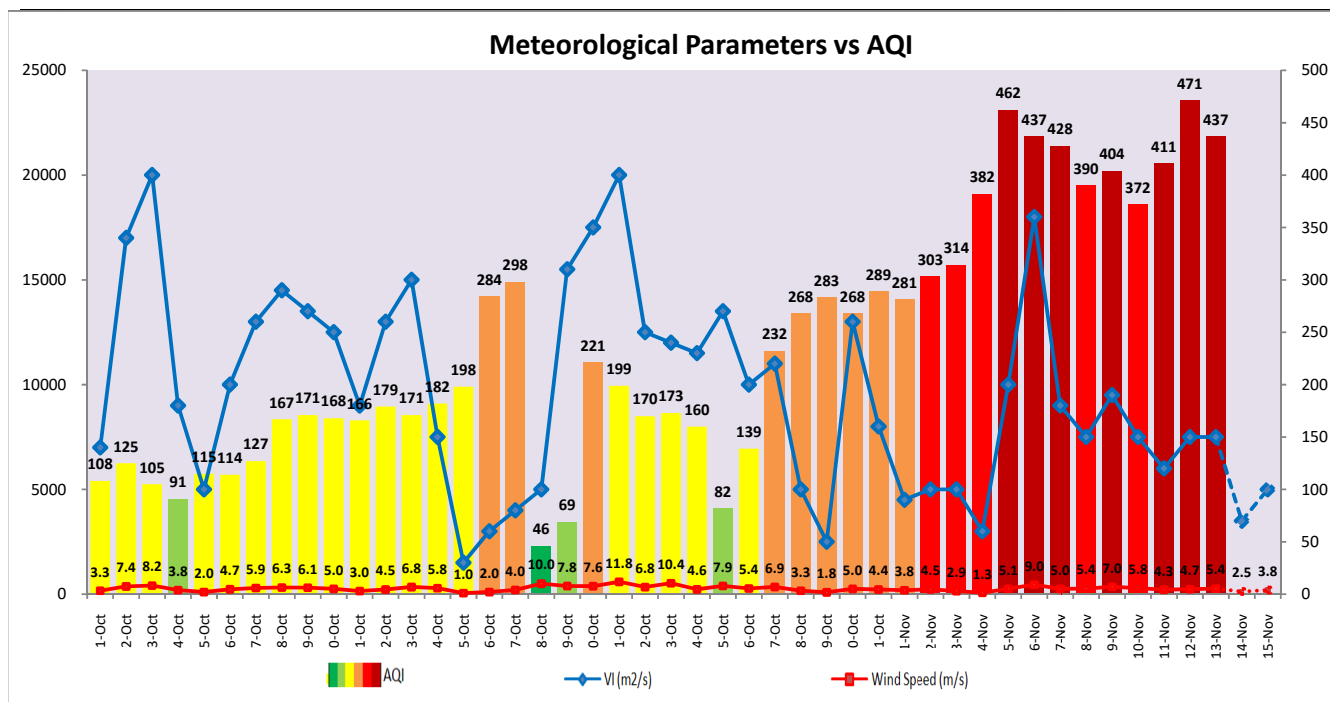
The air quality over Delhi-NCT is likely to improve marginally but remain in Severe category tomorrow. The predominant surface wind is likely to be coming from Northwest directions of Delhi with wind speed upto 06 kmph during day time, likely to be calm during morning/evening, mainly clear sky and **moderate fog in the morning**. Ventilation index is likely to be 3,500 m²/s.

▪ **Active Fire Events (AFE)**

Date	Punjab		Haryana	
	Nos. on the day	Total since September 21	Nos. on the day	Total since September 21
12.11.2021	3403	59121	127	5190
12.11.2020	1989	77310	83	3530



The contribution of biomass burning in PM_{2.5} concentration is likely to be approximately 10% on 13.11.2021 and 14.11.2021 as winds are favourable for transportation of pollutants.



▪ Hotspots for Today

City	Station Name	AQI value	Air Quality	Prominent Pollutant
Delhi	Major Dhyan Chand National Stadium, Delhi - DPCC	476	Severe	PM _{2.5}
	Dwarka-Sector 8, Delhi - DPCC	473	Severe	PM _{2.5}
	Patparganj, Delhi - DPCC	470	Severe	PM _{2.5}
	Jawaharlal Nehru Stadium, Delhi - DPCC	468	Severe	PM _{2.5}
	CRRI Mathura Road, Delhi - IMD	462	Severe	PM _{2.5}
Faridabad	Sector- 16A, Faridabad - HSPCB	429	Severe	PM _{2.5}
	Sector 11, Faridabad - HSPCB	428	Severe	PM _{2.5}
Gurugram	Vikas Sadan, Gurugram - HSPCB	462	Severe	PM _{2.5}
	NISE Gwal Pahari, Gurugram - IMD	451	Severe	PM _{2.5}
	Teri Gram, Gurugram - HSPCB	451	Severe	PM _{2.5}
Ghaziabad	Indirapuram, Ghaziabad - UPPCB	462	Severe	PM _{2.5}
	Loni, Ghaziabad - UPPCB	457	Severe	PM _{2.5}
Greater Noida	Knowledge Park - III, Greater Noida - UPPCB	433	Severe	PM _{2.5}
Noida	Sector-1, Noida - UPPCB	473	Severe	PM _{2.5}
	Sector - 125, Noida - UPPCB	471	Severe	PM _{2.5}