



Central Pollution Control Board

Air Quality Status for Delhi & NCR

Dated – June 13, 2022



Current Air Quality Status:

Air Quality Index (AQI) (Average of past 24 hours)

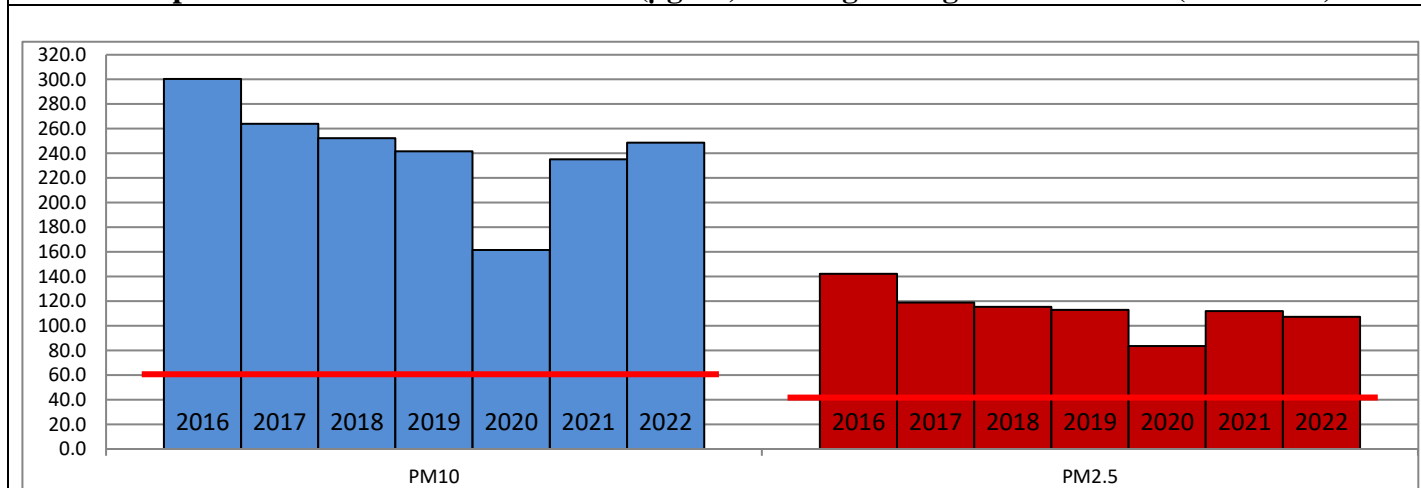
	Air Quality	AQI Value	Prominent Pollutant
Delhi	Moderate	200 ↓	PM ₁₀
Faridabad	Moderate	167 ↓	PM _{2.5} , PM ₁₀
Ghaziabad	Poor	234 ↓	PM ₁₀
Greater Noida	Poor	219 ↓	PM ₁₀
Gurugram	Poor	224 ↓	PM _{2.5} , PM ₁₀
Noida	Poor	235 ↓	PM ₁₀

*Data available for 33 stations in Delhi today. # ↓ ↑ arrows indicate a decrease/increase as compared to the value on the previous day.

Comparative status of AQI - Delhi from 01 January to 13 June 2016-2022

Category	Year	2016	2017	2018	2019	2020	2021	2022	2016	2017	2018	2019	2020	2021	2022
	No. of days	160	164	164	164	165	164	164							
Good (0–50)		0	0	0	0	1	0	0							
Satisfactory (51–100)		0	0	1	2	29	7	4	17	42	55	64	111	69	39
Moderate (101–200)		17	42	54	62	81	62	35							
Poor (201–300)		84	86	78	67	37	56	103							
Very Poor (301–400)		53	36	27	26	15	33	21	143	122	109	100	54	95	125
Severe (>401)		6	0	4	7	2	6	1							

Comparative status of PM_{2.5} and PM₁₀ (µg/m³) running average – Till June 12 (2016-2022)



Hotspots for Today:

*Details given overleaf

Delhi	Mundka, Anand Vihar, Rohini, Dwarka Sector-8, Narela	Gurugram	Vikas Sadan, Teri Gram
Faridabad	Sector-11	Greater Noida	Knowledge Park-III
Ghaziabad	Loni, Vasundhara	Noida	Sector-125, Sector-116

Forecast by IITM (Delhi):

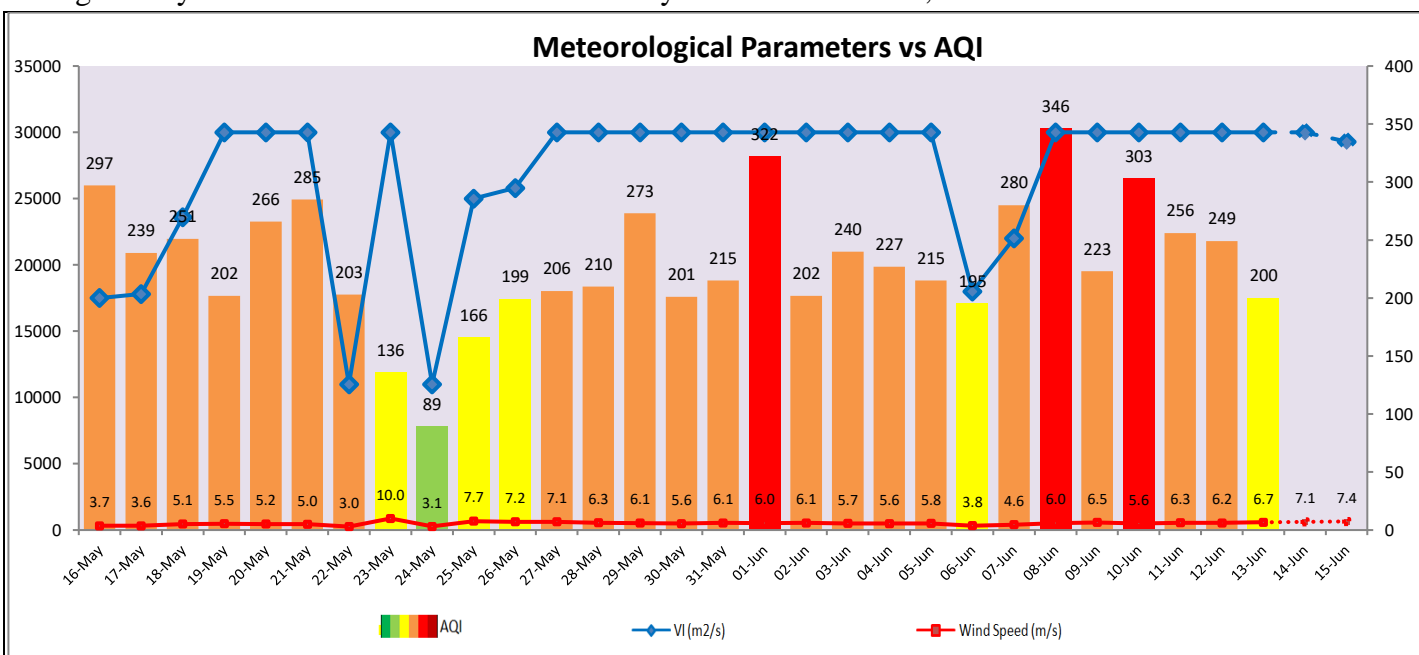
Parameters	June 14, 2022		June 15, 2022- June 16, 2022	
	Concentration	AQI Category	Concentration	AQI Category
PM ₁₀	197	Moderate	153	Moderate
PM _{2.5}	47	Satisfactory	36	Satisfactory

Wind Forecast for Delhi:

	Wind speed (at surface) in km/h		Wind speed (at 900 m) in km/h	Wind Direction	
	As per IMD (at 17:30 hrs.)	As per windy.com (at 16:00 hrs.)	As per windy.com (at 16:00hrs)	As per IMD (at 17:30hrs.)	As per windy.com at 900m
June 14, 2022	26	22	35	W	W
June 15, 2022	26	19	30	W	W
June 16, 2022	16	24	27	SW	NW

IMD Alert for Tomorrow (14.06.2022):

The air quality over Delhi-NCT is likely to remain in Poor to Moderate category on 14.06.2022. The predominant surface wind is likely to be coming from West direction in Delhi with wind speed 24-26 kmph, partly cloudy sky with possibility of very light rain/drizzle and strong surface winds (speed 25-35 kmph) during the day tomorrow. Ventilation index is likely to be more than 30,000 m²/s.



Hotspots for Today

City	Station Name	AQI value	Air Quality	Prominent Pollutant
Delhi	Mundka, Delhi - DPCC	268	Poor	PM ₁₀
	Dwarka-Sector 8, Delhi - DPCC	266	Poor	PM ₁₀
	Anand Vihar, Delhi - DPCC	257	Poor	PM ₁₀
	Narela, Delhi - DPCC	227	Poor	PM ₁₀
	Rohini, Delhi - DPCC	227	Poor	PM ₁₀
Faridabad	Sector 11, Faridabad - HSPCB	224	Poor	PM _{2.5}
Gurugram	Vikas Sadan, Gurugram - HSPCB	257	Poor	PM _{2.5}
	Teri Gram, Gurugram - HSPCB	232	Poor	PM ₁₀
Ghaziabad	Loni, Ghaziabad - UPPCB	344	Very Poor	PM ₁₀
	Vasundhara, Ghaziabad - UPPCB	235	Poor	PM ₁₀
Greater Noida	Knowledge Park - III, Greater Noida - UPPCB	225	Poor	PM ₁₀
Noida	Sector - 125, Noida - UPPCB	279	Poor	PM ₁₀
	Sector-116, Noida - UPPCB	233	Poor	PM ₁₀