



Central Pollution Control Board

Air Quality Status for Delhi & NCR

Dated – April 13, 2022



Current Air Quality Status:

Air Quality Index (AQI) (Average of past 24 hours)

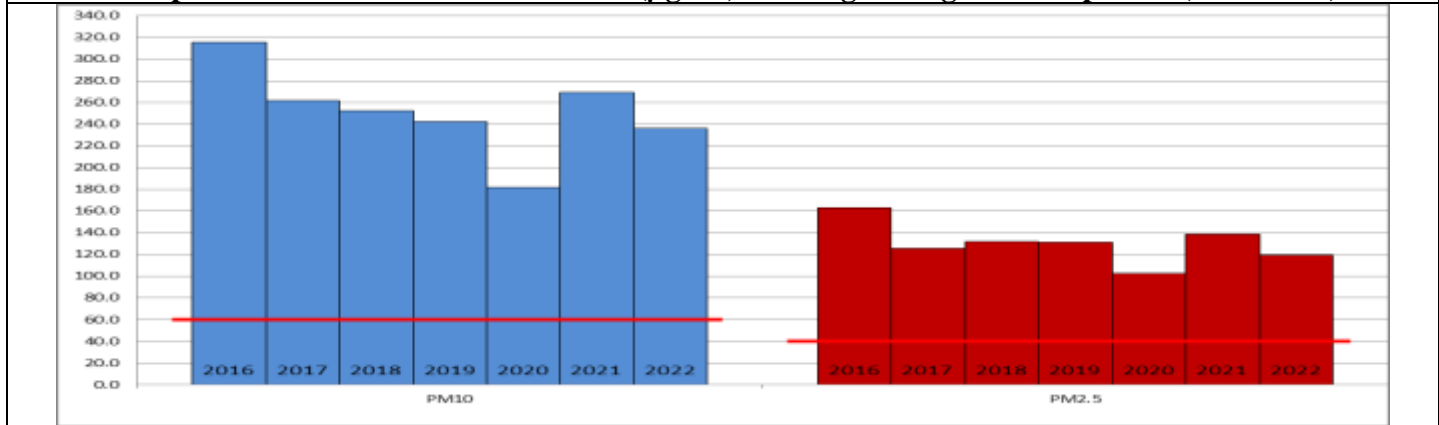
	Air Quality	AQI Value	Prominent Pollutant
Delhi	Poor	286↑	PM ₁₀
Faridabad	Severe	432↑	PM ₁₀
Ghaziabad	Poor	281↓	PM ₁₀
Greater Noida	Very Poor	349↑	PM ₁₀
Gurugram	Poor	228↑	PM _{2.5} , PM ₁₀
Noida	Very Poor	309↑	PM _{2.5} , PM ₁₀

*Data available for 34 stations in Delhi today. # ↓ ↑ arrows indicate increase/decrease as compared to value on the previous day

Comparative status of AQI - Delhi from 01 January to 13 April 2016-2022

Category	Year	2016	2017	2018	2019	2020	2021	2022	2016	2017	2018	2019	2020	2021	2022
		No. of days	100	103	103	103	104	103	103						
Good (0-50)		0	0	0	0	1	0	0							
Satisfactory (51-100)		0	0	1	1	19	0	3	8	25	31	37	52	21	27
Moderate (101-200)		8	25	30	36	32	21	24							
Poor (201-300)		43	53	48	37	35	45	58							
Very Poor (301-400)		43	25	21	22	15	31	17	92	78	72	66	52	82	76
Severe (>401)		6	0	3	7	2	6	1							

Comparative status of PM_{2.5} and PM₁₀ (µg/m³) running average – Till April 12 (2016-2022)



Hotspots for Today:

*Details given overleaf

Delhi	Bawana, Okhla Phase-2, Mundka, Anand Vihar, Major Dhyan Chand National Stadium	Gurugram	Sector-51
Faridabad	-	Greater Noida	-
Ghaziabad	Sanjay Nagar	Noida	-

Forecast by IITM:

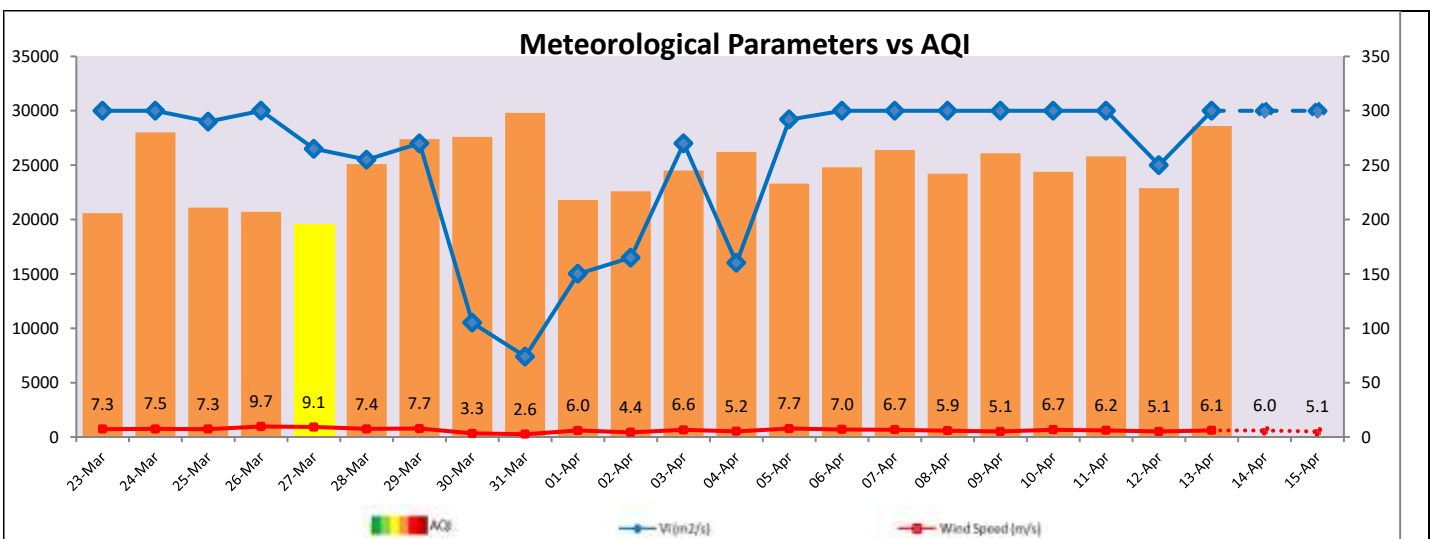
Parameters	April 14, 2022		April 15, 2022- April 16, 2022	
	Concentration	AQI Category	Concentration	AQI Category
PM ₁₀	312	Moderate	369	Very Poor
PM _{2.5}	113	Poor	133	Very Poor

Wind Forecast for Delhi:

	Wind speed (at surface) in km/h		Wind speed (at 900 m) in km/h	Wind Direction	
	As per IMD (at 17:30 hrs.)	As per windy.com (at 16:00 hrs.)	As per windy.com (at 16:00hrs)	As per IMD (at 17:30hrs.)	As per windy.com at 900m
April 14, 2022	10	11	24	WNW	W
April 15, 2022	05	14	27	E	NW
April 16, 2022	08	14	23	NW	NW

▪ **IMD Alert for Tomorrow (14.04.2022):**

The air quality is likely to remain in upper end of Poor category on 14.04.2022. The predominant surface wind is likely to be coming from Northwest direction of Delhi with wind speed 05-22 kmph, partly cloudy sky and strong surface winds (speed 20-30 kmph) during the day tomorrow. Ventilation index is likely to be more than 30,000 m² /s tomorrow.



▪ **Hotspots for Today**

City	Station Name	AQI value	Air Quality	Prominent Pollutant
Delhi	Bawana, Delhi - DPCC	385	Very Poor	PM ₁₀
	Okhla Phase-2, Delhi - DPCC	375	Very Poor	PM ₁₀
	Major Dhyan Chand National Stadium, Delhi - DPCC	355	Very Poor	PM ₁₀
	Mundka, Delhi - DPCC	345	Very Poor	PM ₁₀
	Anand Vihar, Delhi - DPCC	346	Very Poor	PM ₁₀
Gurugram	Sector-51, Gurugram - HSPCB	320	Very Poor	PM ₁₀
Ghaziabad	Sanjay Nagar, Ghaziabad - UPPCB	242	Poor	PM ₁₀