



Central Pollution Control Board

Air Quality Status for Delhi & NCR

Dated – February 13, 2023



Current Air Quality Status:

Air Quality Index (AQI) (Average of past 24 hours)

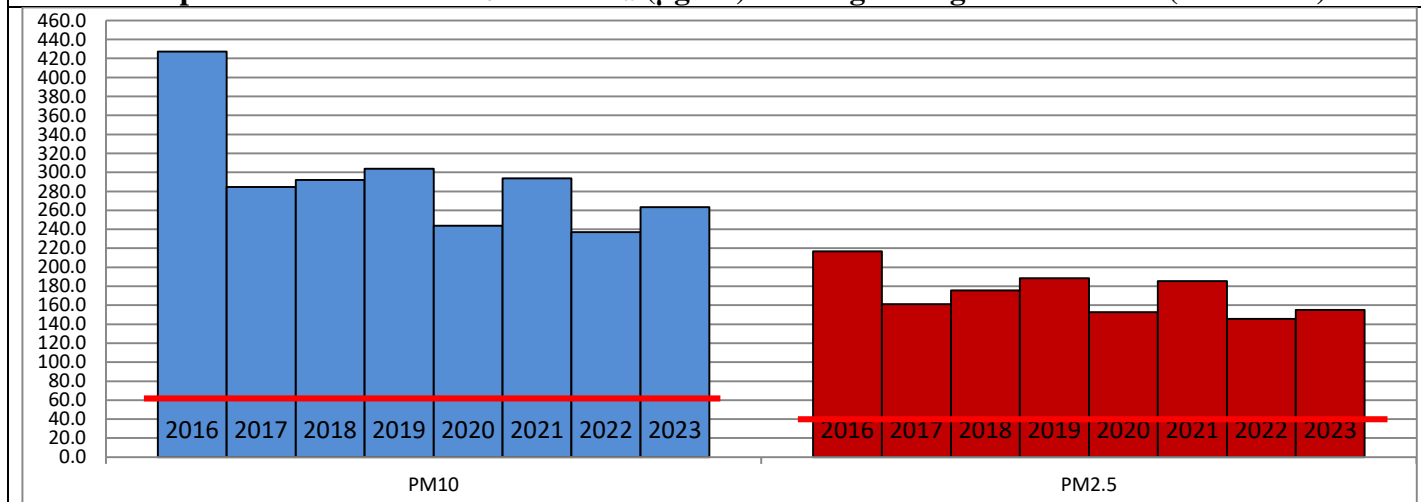
	Air Quality	AQI Value	Prominent Pollutant
Delhi	Moderate	135 ↓	PM ₁₀ , PM _{2.5}
Faridabad	Moderate	142 ↓	PM _{2.5}
Ghaziabad	Moderate	132 ↓	PM ₁₀
Greater Noida	Moderate	138 ↓	PM ₁₀
Gurugram	Moderate	140 ↓	PM _{2.5}
Noida	Moderate	115 ↓	PM ₁₀

*Data available for 36 stations in Delhi today. # ↓ ↑ arrows indicate a decrease/increase as compared to the value on the previous day.

Comparative status of AQI - Delhi from 01 January to 13 February 2016-2023

Category	Year	2016	2017	2018	2019	2020	2021	2022	2023	2016	2017	2018	2019	2020	2021	2022	2023
	No. of days	44	44	44	44	44	44	44	44								
Good (0-50)		0	0	0	0	0	0	0	0								
Satisfactory (51-100)		0	0	0	0	0	0	2	0	0	3	2	5	3	4	9	9
Moderate (101-200)		0	3	2	5	3	4	7	9								
Poor (201-300)		6	17	18	12	24	11	18	17								
Very Poor (301-400)		32	24	21	20	15	23	16	15	44	41	42	39	41	40	35	35
Severe (>401)		6	0	3	7	2	6	1	3								

Comparative status of PM₁₀ and PM_{2.5} (µg/m³) running average – Till Feb 12 (2016-2023)



Hotspots for Today:

*Details given overleaf

Delhi	Shadipur, Anand Vihar, NSIT Dwarka, IHBAS-Dilshad Garden, Vivek Vihar	Ghaziabad	Vasundhara, Sanjay Nagar
Faridabad	Sector-11, New Industrial Town	Greater Noida	Knowledge Park-V
Gurugram	Teri Gram	Noida	Sector-62, Sector-116

Forecast by IITM (Delhi):

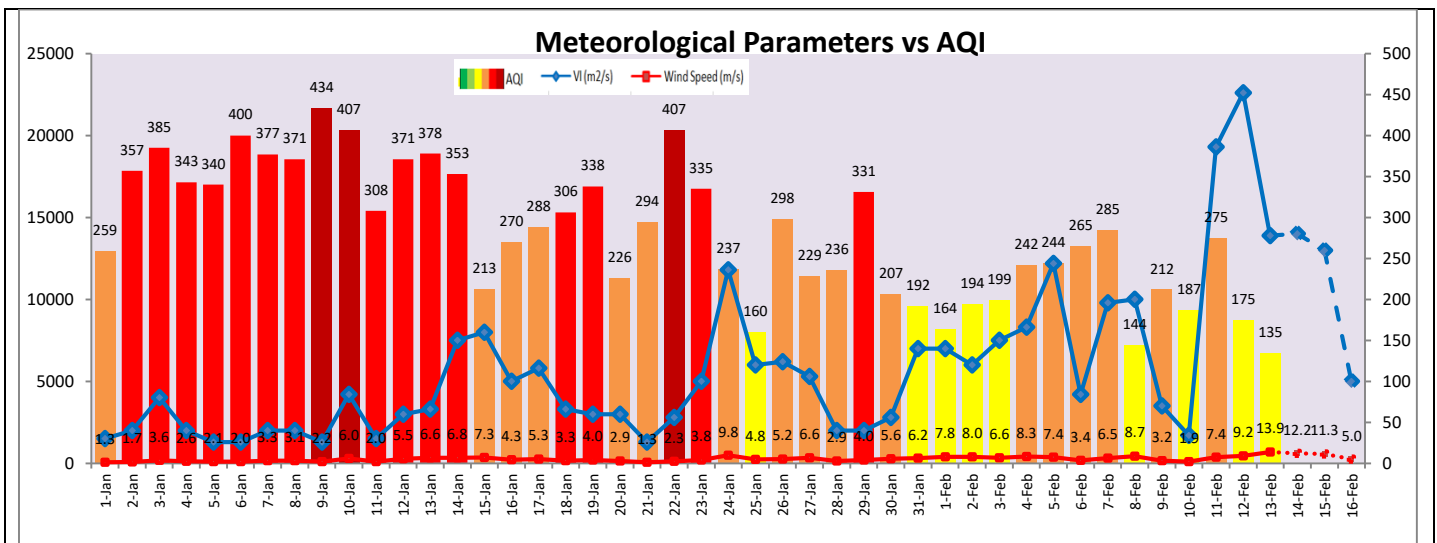
	Feb 14, 2023		Feb 15, 2023- Feb 16, 2023	
	Concentration	AQI Category	Concentration	AQI Category
PM ₁₀	156	Moderate	182	Moderate
PM _{2.5}	49	Satisfactory	57	Satisfactory

Wind Forecast for Delhi:

	Wind speed (at surface) in km/h		Wind speed (at 900 m) in km/h	Wind Direction	
	As per IMD (range)	As per windy.com (at 16:00 hrs.)	As per windy.com (at 16:00hrs)	As per IMD	As per windy.com at 900m
Feb 14, 2023	20-25	08	43	NW	NW
Feb 15, 2023	06-20	12	53	NW	NW
Feb 16, 2023	06-08	07	37	NW/CALM	NW

IMD Alert for Tomorrow (14.02.2023):

The air quality is likely to improve further but remain in lower end of Moderate category on 14.02.2023. The predominant surface wind is likely to be coming from Northwest direction in Delhi with wind speed 20-25 kmph, mainly clear sky and strong surface winds (speed 20-30 kmph) with occasionally gusty winds (speed 40 kmph) during the day tomorrow. Ventilation index is likely to be 14,000 m²/s.



Hotspots for Today

City	Station Name	AQI value	Air Quality	Prominent Pollutant
Delhi	Shadipur, Delhi - CPCB	240	Poor	PM _{2.5}
	Anand Vihar, Delhi - DPCC	212	Poor	PM ₁₀
	NSIT Dwarka, Delhi - CPCB	193	Moderate	PM ₁₀
	IHBAS, Dilshad Garden, Delhi - CPCB	187	Moderate	PM _{2.5}
	Vivek Vihar, Delhi - DPCC	174	Moderate	PM ₁₀
Faridabad	Sector 11, Faridabad - HSPCB	202	Poor	PM _{2.5}
	New Industrial Town, Faridabad - HSPCB	197	Moderate	PM ₁₀
Gurugram	Teri Gram, Gurugram - HSPCB	195	Moderate	PM _{2.5}
Ghaziabad	Vasundhara, Ghaziabad - UPPCB	153	Moderate	PM ₁₀
	Sanjay Nagar, Ghaziabad - UPPCB	137	Moderate	PM ₁₀
Greater Noida	Knowledge Park - V, Greater Noida - UPPCB	157	Moderate	PM ₁₀
Noida	Sector - 62, Noida - IMD	122	Moderate	PM ₁₀
	Sector-116, Noida - UPPCB	116	Moderate	PM ₁₀