



Central Pollution Control Board

Air Quality Status for Delhi &NCR

Dated – February 13, 2022



Current Air Quality Status:

Air Quality Index (AQI) (Average of past 24 hours)

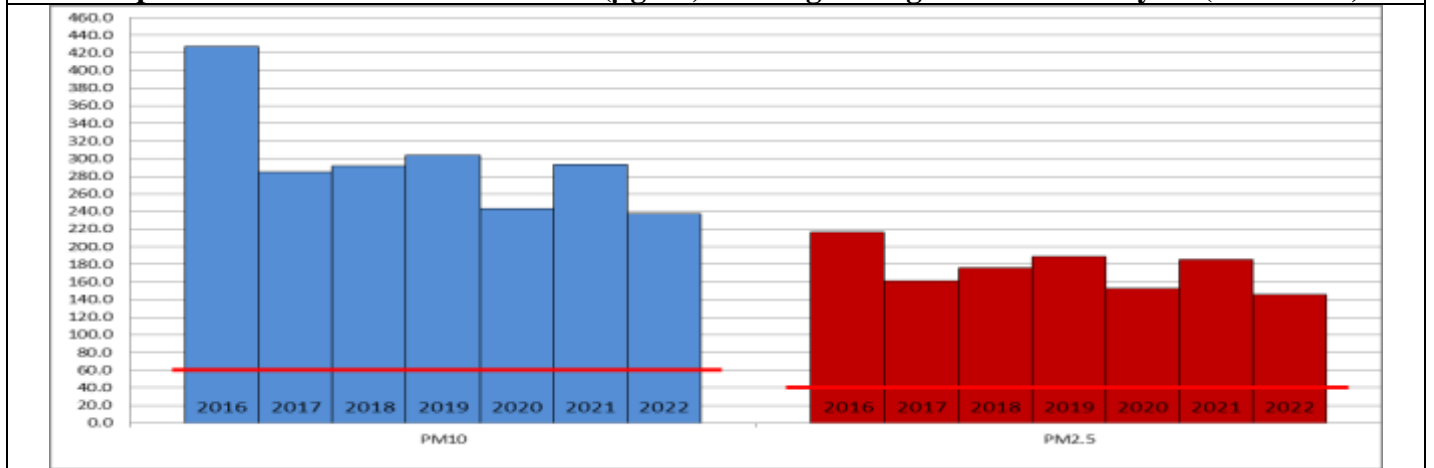
	Air Quality	AQI Value	Prominent Pollutant
Delhi	Poor	253↓	PM ₁₀ , PM _{2.5}
Faridabad	Poor	279↑	PM ₁₀ , PM _{2.5}
Ghaziabad	Poor	250↑	PM ₁₀ , PM _{2.5}
Greater Noida	Moderate	198↑	PM ₁₀
Gurugram	Poor	218↑	PM ₁₀ , PM _{2.5}
Noida	Poor	232↑	PM ₁₀ , PM _{2.5}

*Data available for 36 stations in Delhi today. # ↓ ↑ arrows indicate increase/decrease as compared to value on the previous day

Comparative status of AQI - Delhi from 01 January to 13 February 2016-2022

Category	Year	2016	2017	2018	2019	2020	2021	2022	2016	2017	2018	2019	2020	2021	2022
	No. of days	44	44	44	44	44	44	44							
Good (0–50)		0	0	0	0	0	0	0							
Satisfactory (51–100)		0	0	0	0	0	0	2	0	3	2	5	3	4	9
Moderate (101–200)		0	3	2	5	3	4	7							
Poor (201–300)		6	17	18	12	24	11	18							
Very Poor (301–400)		32	24	21	20	15	23	16	44	41	42	39	41	40	35
Severe (>401)		6	0	3	7	2	6	1							

Comparative status of PM_{2.5} and PM₁₀ (µg/m³) running average – Till February 12 (2016-2022)



Hotspots for Today:

*Details given overleaf

Delhi	Anand Vihar, Nehru Nagar, Jahangirpuri, NSIT Dwarka, Dwarka-Sector 8	Gurugram	Teri Gram, Sector-51
Faridabad	Sector-16A, New Industrial Town	Greater Noida	Knowledge Park – V
Ghaziabad	Sanjay Nagar, Loni	Noida	Sector -62, Sector - 125

Forecast by IITM:

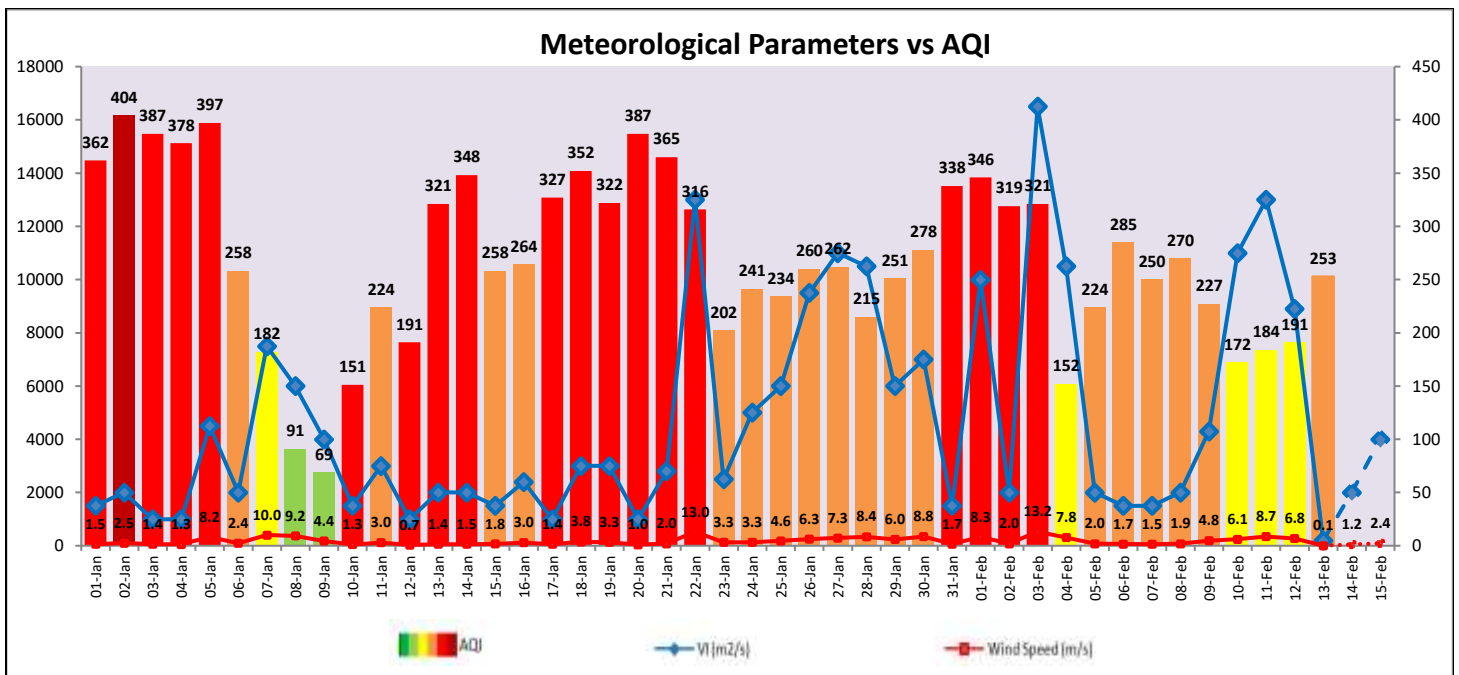
Parameters	February 14, 2022		February 15, 2022- February 16, 2022	
	Concentration	AQI Category	Concentration	AQI Category
PM ₁₀	245	Moderate	290	Poor
PM _{2.5}	123	Very Poor	146	Very Poor

▪ **Wind Forecast for Delhi:**

	Wind speed (at surface) in km/h		Wind speed (at 900 m) in km/h	Wind Direction	
	As per IMD (at 17:30 hrs.)	As per windy.com (at 16:00 hrs.)	As per windy.com (at 16:00hrs)	As per IMD (at 17:30hrs.)	As per windy.com at 900m
February 14, 2022	04	06	10	NE	NW
February 15, 2022	08	06	16	N	NW
February 16, 2022	08	07	26	NW	NW

▪ **IMD Alert for Tomorrow (14.02.2022):**

The air quality is likely to remain in Poor category tomorrow. The predominant surface wind is likely to be calm during morning hours and coming from Northeast/Southeast direction of Delhi with wind speed 04-08 kmph, mainly clear sky and mist/shallow fog in the morning tomorrow. The ventilation index is likely to be 2,000 m²/s.



▪ **Hotspots for Today**

City	Station Name	AQI value	Air Quality	Prominent Pollutant
Delhi	Anand Vihar, Delhi - DPCC	355	Very Poor	PM ₁₀
	NSIT Dwarka, Delhi - CPCB	337	Very Poor	PM _{2.5}
	Jahangirpuri, Delhi - DPCC	325	Very Poor	PM _{2.5}
	Dwarka-Sector 8, Delhi - DPCC	301	Very Poor	PM _{2.5}
	Nehru Nagar, Delhi - DPCC	292	Poor	PM _{2.5}
Faridabad	New Industrial Town, Faridabad - HSPCB	313	Very Poor	PM ₁₀
	Sector- 16A, Faridabad - HSPCB	279	Poor	PM _{2.5}
Gurugram	Sector-51, Gurugram - HSPCB	265	Poor	PM ₁₀
	Teri Gram, Gurugram - HSPCB	234	Poor	PM _{2.5}
Ghaziabad	Loni, Ghaziabad - UPPCB	329	Very Poor	PM _{2.5}
	Sanjay Nagar, Ghaziabad - UPPCB	227	Poor	PM _{2.5}
Greater Noida	Knowledge Park - V, Greater Noida - UPPCB	202	Poor	PM ₁₀
Noida	Sector - 125, Noida - UPPCB	261	Poor	PM _{2.5}
	Sector - 62, Noida - IMD	229	Poor	PM ₁₀