



Central Pollution Control Board

Air Quality Status for Delhi & NCR

Dated – January 13, 2024



Current Air Quality Status:

Air Quality Index (AQI) (Average of past 24 hours at 4 PM) in comparison with last two years

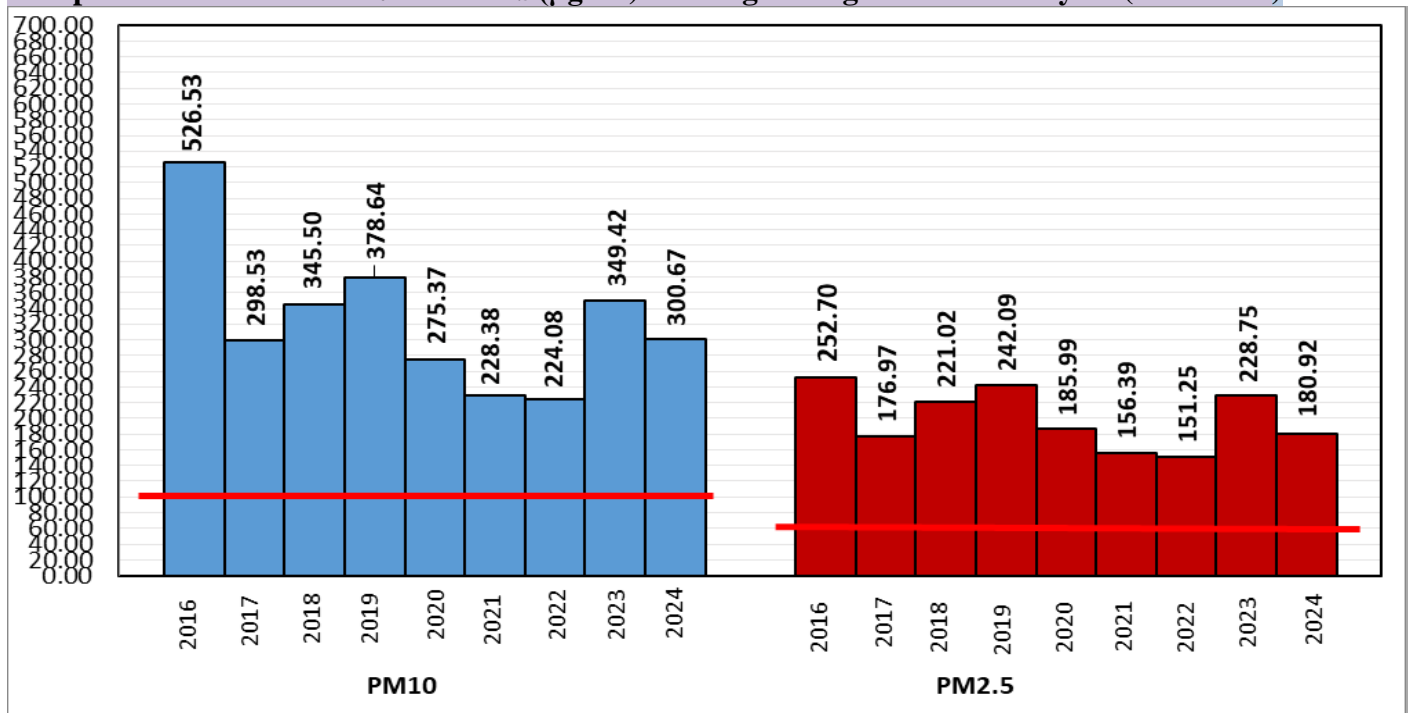
| | 2024 | | | 2023 | | | 2022 | | |
|---------------|-------------|-----------|---------------------|-------------|-----------|---------------------|-------------|-----------|---------------------|
| | Air Quality | AQI Value | Prominent Pollutant | Air Quality | AQI Value | Prominent Pollutant | Air Quality | AQI Value | Prominent Pollutant |
| Delhi | Very Poor | 399↑ | PM2.5 | Very Poor | 378↑ | PM2.5 | Very Poor | 321↑ | PM2.5, PM10 |
| Faridabad | Very Poor | 330↑ | PM10, PM2.5 | Very Poor | 319↓ | PM2.5 | Poor | 252↑ | PM2.5, PM10 |
| Ghaziabad | Very Poor | 314↑ | PM2.5 | Poor | 293↓ | PM2.5 | Very Poor | 335↑ | PM2.5 |
| Greater Noida | Very Poor | 338↑ | PM2.5 | Very Poor | 332↑ | PM2.5 | Very Poor | 332↑ | PM2.5 |
| Gurugram | Very Poor | 335↑ | PM2.5 | Very Poor | 311↓ | PM2.5 | Poor | 282↑ | PM2.5 |
| Noida | Very Poor | 362↑ | PM10, PM2.5 | Very Poor | 324↑ | PM2.5 | Poor | 297↑ | PM2.5 |

*Data available for 39(2024), 37(2023), 34(2022) stations in Delhi today. # ↑, ↓ arrows indicate a decrease/increase as compared to the value on the previous day.

Comparative status of AQI - Delhi from 01 January to 13 January 2016-2024

| Category | Year | 2016 | 2017 | 2018 | 2019 | 2020 | 2021 | 2022 | 2023 | 2024 | 2016 | 2017 | 2018 | 2019 | 2020 | 2021 | 2022 | 2023 | 2024 | |
|-----------------------|-------------|------|------|------|------|------|------|------|------|------|------|------|------|------|------|------|------|------|------|----|
| | No. of days | 13 | 13 | 13 | 13 | 13 | 13 | 13 | 13 | 13 | 2016 | 2017 | 2018 | 2019 | 2020 | 2021 | 2022 | 2023 | 2024 | |
| Good (0-50) | | 0 | 0 | 0 | 0 | 0 | 0 | 0 | 0 | 0 | 0 | 0 | 0 | 0 | 0 | 0 | 0 | 0 | 0 | 0 |
| Satisfactory (51-100) | | 0 | 0 | 0 | 0 | 0 | 0 | 2 | 0 | 0 | 0 | 0 | 0 | 0 | 0 | 2 | 5 | 0 | 0 | 0 |
| Moderate (101-200) | | 0 | 0 | 0 | 0 | 0 | 2 | 3 | 0 | 0 | 0 | 0 | 0 | 0 | 0 | 0 | 0 | 0 | 0 | 0 |
| Poor (201-300) | | 0 | 4 | 2 | 2 | 5 | 5 | 2 | 1 | 1 | 13 | 13 | 13 | 13 | 13 | 11 | 8 | 13 | 13 | 13 |
| Very Poor (301-400) | | 10 | 9 | 9 | 6 | 6 | 4 | 5 | 10 | 12 | 13 | 13 | 13 | 13 | 13 | 11 | 8 | 13 | 13 | 13 |
| Severe (>401) | | 3 | 0 | 2 | 5 | 2 | 2 | 1 | 2 | 0 | 13 | 13 | 13 | 13 | 13 | 11 | 8 | 13 | 13 | 13 |

Comparative status of PM₁₀ and PM_{2.5} (µg/m³) running average – Till January 12 (2016-2024)



*Red line shows the annual average concentration standards for PM₁₀ and PM_{2.5}.

▪ **Daily Average of Particulates in Delhi** (24 hourly average value; from 06:00am of 12.01.24 to 06:00 am of 13.01.24)

| Date ↓ / parameter → | PM _{2.5} (µg/m ³) | PM ₁₀ (µg/m ³) |
|----------------------|--|---------------------------------------|
| 12-January -2024 | 205↑ | 318↑ |

Hotspots for Today:

*Details given below

| | | | |
|-----------|--|---------------|---------------------------------------|
| Delhi | Nehru Nagar, Dwarka-Sector 8, Punjabi Bagh, Anand Vihar, Mandir Marg | Ghaziabad | Vasundhara, Sanjay Nagar, Indirapuram |
| Faridabad | New Industrial Town, Sector- 16A, Sector 11 | Greater Noida | Knowledge Park -V |
| Gurugram | Sector-51, Teri Gram | Noida | Sector - 62, Sector-1, Sector-116 |

▪ **Forecast by IITM(Delhi):**

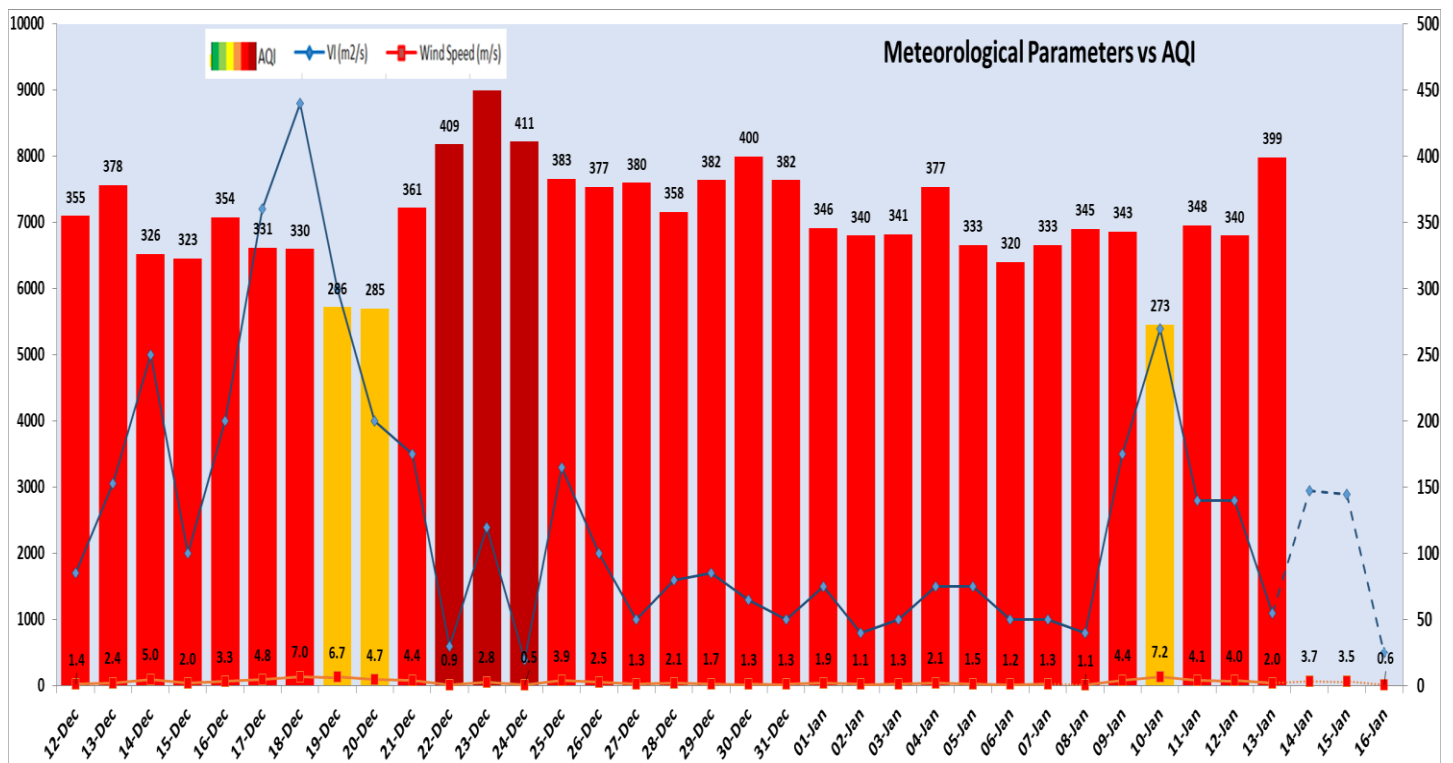
| | Jan 14, 2024 | Jan 15, 2024 | Jan 16, 2024 |
|---------------------|--------------|--------------|--------------|
| AQI Category | Very Poor | Very Poor | Very Poor |

▪ **Wind Forecast for Delhi:**

| | Wind speed (at surface) in km/h | | Wind speed (at 900 m) in km/h | Wind Direction | |
|--------------|---------------------------------|----------------------------------|--------------------------------|----------------|--------------------------|
| | As per IMD (range) | As per windy.com (at 16:00 hrs.) | As per windy.com (at 16:00hrs) | As per IMD | As per windy.com at 900m |
| Jan 14. 2024 | 04 TO 08 | 09 | 15 | WNW/NW | NW |
| Jan 15. 2024 | 04 TO 08 | 08 | 13 | VAR | NW |
| Jan 16. 2024 | 08 TO 06 | 04 | 02 | SE/ESE | W |

▪ **IMD Alert for Tomorrow (14.01.2024):**

The air quality is likely to remain in Very Poor category from 14.01.2024 to 16.01.2024. The predominant surface wind is likely to be coming from Westnorthwest/Northwest directions in Delhi with wind speed 04-08 kmph and mainly clear sky, dense fog in the morning and cold wave conditions at many places on 14.01.2024. Ventilation index is likely to be 2950m²/s.



| Delhi Temperature in (°C) | | |
|---------------------------|---------|---------|
| Date | Minimum | Maximum |
| 10-01-2024 | 7.1 | 13.4 |
| 11-01-2024 | 5.8 | 15.2 |
| 12-01-2024 | 3.9 | 18.1 |
| 13-01-2024 | 3.6 | 19.3 |

▪ **Hotspots for Today**

| City | Station Name | AQI value | Air Quality | Prominent Pollutant |
|---------------|---|-----------|-------------|---------------------|
| Delhi | Nehru Nagar, Delhi - DPCC | 463 | Severe | PM _{2.5} |
| | Dwarka-Sector 8, Delhi - DPCC | 454 | Severe | PM _{2.5} |
| | Punjabi Bagh, Delhi - DPCC | 446 | Severe | PM _{2.5} |
| | Anand Vihar, Delhi - DPCC | 445 | Severe | PM _{2.5} |
| | Mandir Marg, Delhi - DPCC | 442 | Severe | PM _{2.5} |
| Faridabad | New Industrial Town, Faridabad - HSPCB | 403 | Severe | PM ₁₀ |
| | Sector- 16A, Faridabad - HSPCB | 394 | Very Poor | PM _{2.5} |
| | Sector 11, Faridabad - HSPCB | 343 | Very Poor | PM ₁₀ |
| Gurugram | Sector-51, Gurugram - HSPCB | 410 | Severe | PM _{2.5} |
| | Teri Gram, Gurugram - HSPCB | 338 | Very Poor | PM _{2.5} |
| Ghaziabad | Vasundhara, Ghaziabad - UPPCB | 358 | Very Poor | PM _{2.5} |
| | Sanjay Nagar, Ghaziabad - UPPCB | 346 | Very Poor | PM _{2.5} |
| | Indirapuram, Ghaziabad - UPPCB | 324 | Very Poor | PM _{2.5} |
| Greater Noida | Knowledge Park - V, Greater Noida - UPPCB | 367 | Very Poor | PM _{2.5} |
| Noida | Sector - 62, Noida - IMD | 398 | Very Poor | PM ₁₀ |
| | Sector-1, Noida - UPPCB | 390 | Very Poor | PM _{2.5} |
| | Sector-116, Noida - UPPCB | 366 | Very Poor | PM _{2.5} |