



Central Pollution Control Board

Air Quality Status for Delhi & NCR

Dated – January 13, 2023



Current Air Quality Status:

Air Quality Index (AQI) (Average of past 24 hours)

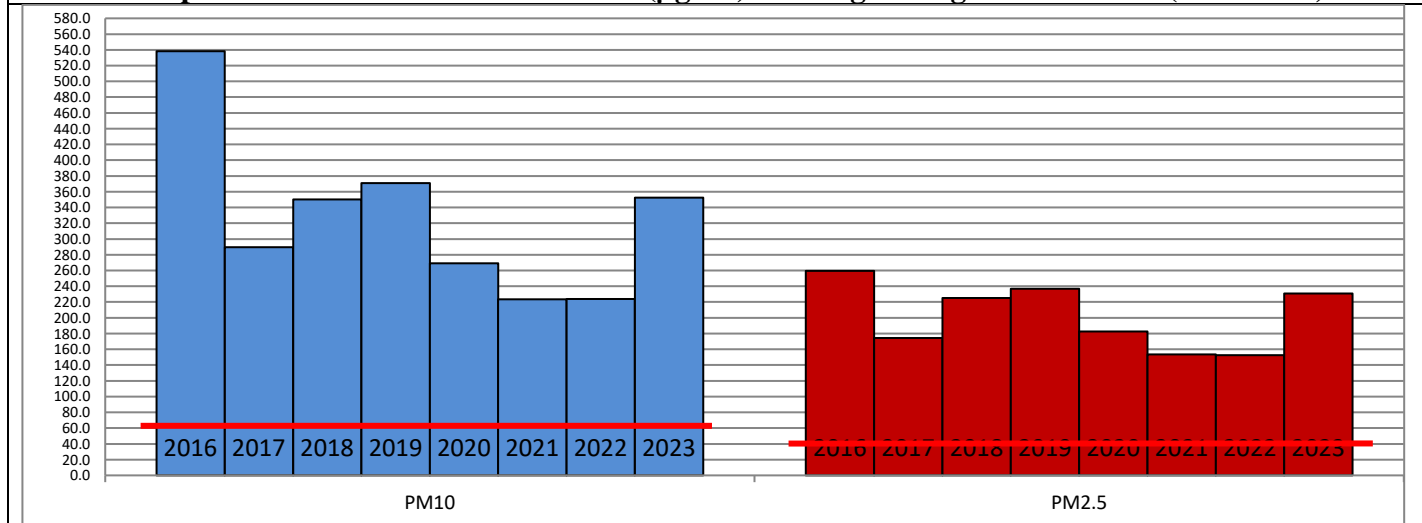
	Air Quality	AQI Value	Prominent Pollutant
Delhi	Very Poor	378 ↑	PM _{2.5}
Faridabad	Very Poor	319 ↓	PM _{2.5}
Ghaziabad	Poor	293 ↓	PM _{2.5}
Greater Noida	Very Poor	332 ↑	PM _{2.5}
Gurugram	Very Poor	311 ↓	PM _{2.5}
Noida	Very Poor	324 ↑	PM _{2.5}

*Data available for 37 stations in Delhi today. # ↓ ↑ arrows indicate a decrease/increase as compared to the value on the previous day.

Comparative status of AQI - Delhi from 01 January to 13 January 2016-2023

Category	Year	2016	2017	2018	2019	2020	2021	2022	2023	2016	2017	2018	2019	2020	2021	2022	2023
	No. of days	13	13	13	13	13	13	13	13								
Good (0-50)		0	0	0	0	0	0	0	0	0	0	0	0	0	0	0	0
Satisfactory (51-100)		0	0	0	0	0	0	2	0	0	0	0	0	0	2	5	0
Moderate (101-200)		0	0	0	0	0	2	3	0	0	0	0	0	0	0	0	0
Poor (201-300)		0	4	2	2	5	6	2	1	13	13	13	13	13	11	8	13
Very Poor (301-400)		10	9	9	6	6	3	5	10	13	13	13	13	13	11	8	13
Severe (>401)		3	0	2	5	2	2	1	2	13	13	13	13	13	11	8	13

Comparative status of PM₁₀ and PM_{2.5} (µg/m³) running average – Till Jan 12 (2016-2023)



Hotspots for Today:

*Details given overleaf

Delhi	ITO, Wazirpur, Sonia Vihar, Narela, Mundka	Ghaziabad	Loni
Faridabad	Sector-30, New Industrial Town	Greater Noida	Knowledge Park - III
Gurugram	Teri Gram	Noida	Sector-1, Sector-116

Forecast by IITM (Delhi):

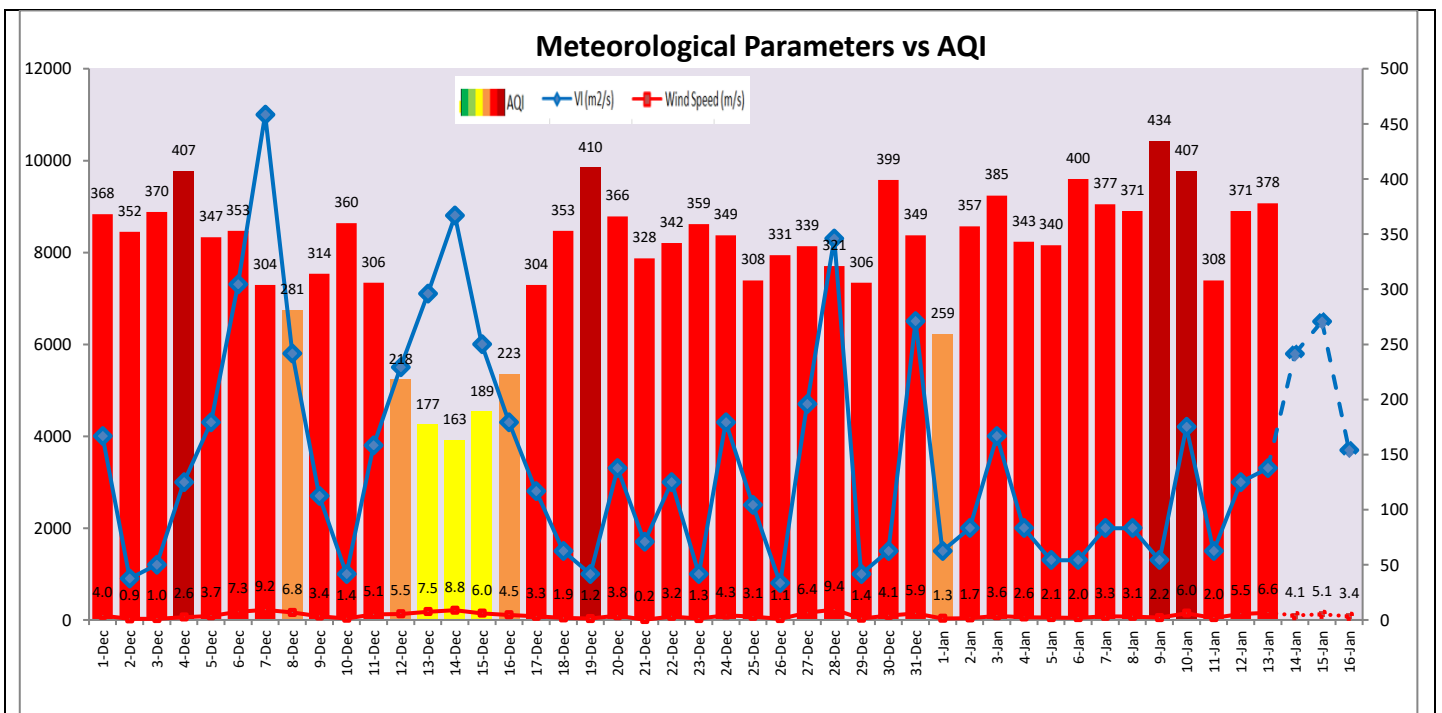
	Jan 14, 2023		Jan 15, 2023- Jan 16, 2023	
	Concentration	AQI Category	Concentration	AQI Category
PM ₁₀	287	Poor	314	Poor
PM _{2.5}	185	Very Poor	202	Very Poor

Wind Forecast for Delhi:

	Wind speed (at surface) in km/h		Wind speed (at 900 m) in km/h	Wind Direction	
	As per IMD (range)	As per windy.com (at 16:00 hrs.)	As per windy.com (at 16:00hrs)	As per IMD	As per windy.com at 900m
Jan 14, 2023	06-14	10	26	NW	NW
Jan 15, 2023	08-15	08	25	NW	NW
Jan 16, 2023	05-12	08	27	NW	NW

IMD Alert for Tomorrow (14.01.2023):

The air quality is likely to deteriorate and reach in Upper end of Very Poor category on 14.01.2023. The predominant surface wind is likely to be coming from Northwest direction in Delhi with wind speed 06 to 14 kmph, partly cloudy sky, and moderate fog in the morning tomorrow. Ventilation index is likely to be 5,800 m²/s.



Hotspots for Today

City	Station Name	AQI value	Air Quality	Prominent Pollutant
Delhi	ITO, Delhi - CPCB	447	Severe	PM _{2.5}
	Wazirpur, Delhi - DPCC	415	Severe	PM _{2.5}
	Sonia Vihar, Delhi - DPCC	407	Severe	PM _{2.5}
	Narela, Delhi - DPCC	399	Very Poor	PM _{2.5}
	Mundka, Delhi - DPCC	398	Very Poor	PM _{2.5}
Faridabad	Sector 30, Faridabad - HSPCB	362	Very Poor	PM _{2.5}
	New Industrial Town, Faridabad - HSPCB	345	Very Poor	PM _{2.5}
Gurugram	Teri Gram, Gurugram - HSPCB	322	Very Poor	PM _{2.5}
Ghaziabad	Loni, Ghaziabad - UPPCB	344	Very Poor	PM _{2.5}
Greater Noida	Knowledge Park - III, Greater Noida - UPPCB	345	Very Poor	PM _{2.5}
Noida	Sector-116, Noida - UPPCB	332	Very Poor	PM _{2.5}
	Sector-1, Noida - UPPCB	326	Very Poor	PM _{2.5}