



# Central Pollution Control Board

## Air Quality Status for Delhi & NCR

Dated – January 13, 2022



### Current Air Quality Status:

#### Air Quality Index (AQI) (Average of past 24 hours)

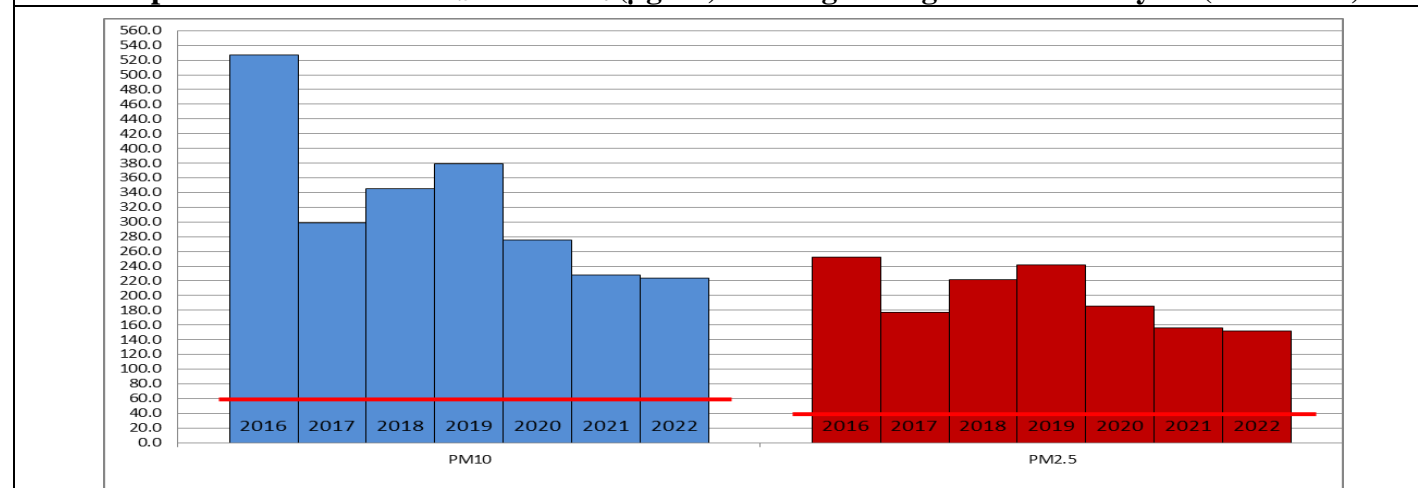
	Air Quality	AQI Value	Prominent Pollutant
Delhi	Very Poor	321 ↑	PM <sub>2.5</sub> , PM <sub>10</sub>
Faridabad	Poor	252 ↑	PM <sub>2.5</sub> , PM <sub>10</sub>
Ghaziabad	Very Poor	335 ↑	PM <sub>2.5</sub>
Greater Noida	Very Poor	332 ↑	PM <sub>2.5</sub>
Gurugram	Poor	282 ↑	PM <sub>2.5</sub>
Noida	Poor	297 ↑	PM <sub>2.5</sub>

\*Data available for 34 stations in Delhi today. # ↑ ↓ arrows indicate increase/decrease as compared to value on the previous day

#### Comparative status of AQI - Delhi from 01 January to 13 January 2016-2022

Category	Year	2016	2017	2018	2019	2020	2021	2022	2016	2017	2018	2019	2020	2021	2022
	No. of days	13	13	13	13	13	13	13							
Good (0-50)		0	0	0	0	0	0	0							
Satisfactory (51-100)		0	0	0	0	0	0	2	0	0	0	0	0	2	5
Moderate (101-200)		0	0	0	0	0	2	3							
Poor (201-300)		0	4	2	2	5	6	2							
Very Poor (301-400)		10	9	9	6	6	3	5	13	13	13	13	13	11	8
Severe (>401)		3	0	2	5	2	2	1							

#### Comparative status of PM<sub>2.5</sub> and PM<sub>10</sub> (µg/m<sup>3</sup>) running average – Till January 13 (2016-2022)



#### Hotspots for Today:

\*Details given overleaf

Delhi	Jahangirpuri, Anand Vihar, Nehru Nagar, Patparganj, Punjabi Bagh	Gurugram	NISE Gwal Pahari, Sector-51
Faridabad	Sector-16A, Sector-30	Greater Noida	Knowledge Park – V
Ghaziabad	Indirapuram, Loni	Noida	Sector -116, Sector - 1

#### Forecast by IITM:

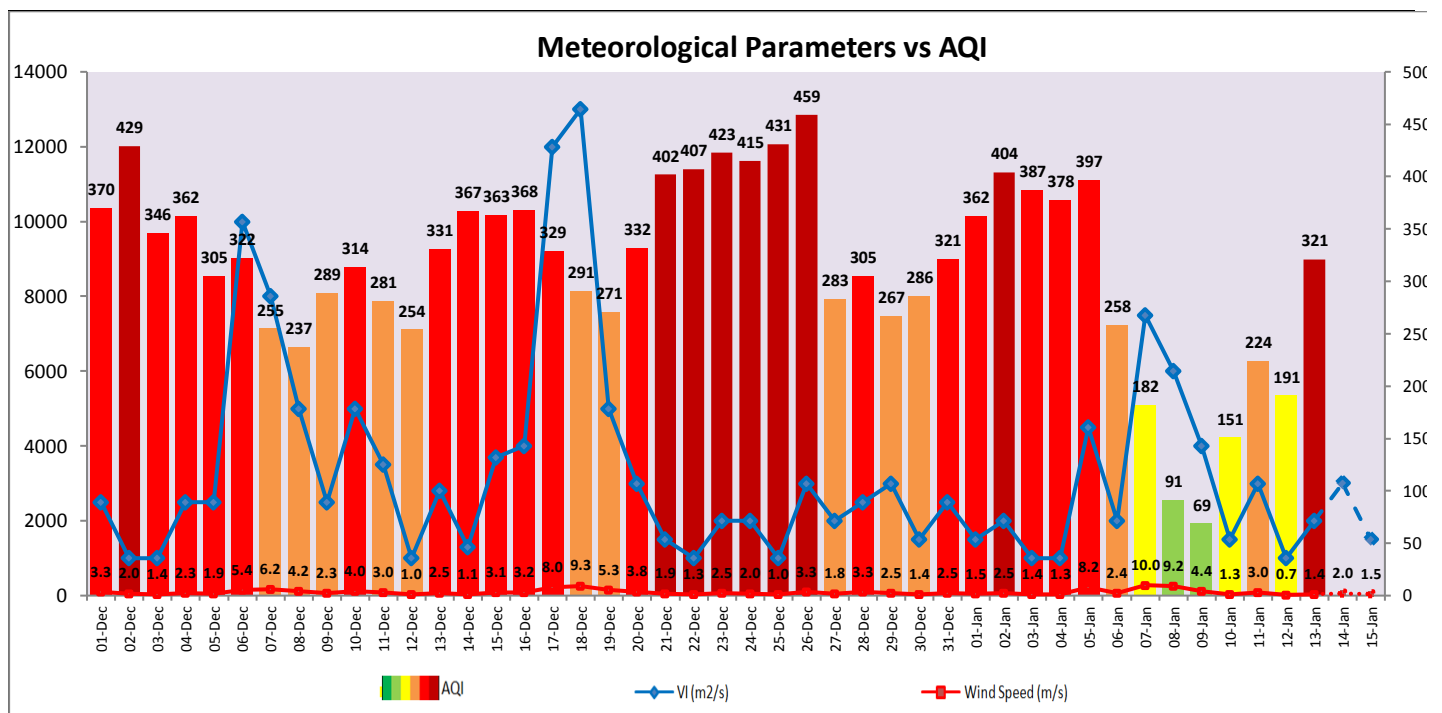
Parameters	January 14, 2022		January 15, 2022-January 16, 2022	
	Concentration	AQI Category	Concentration	AQI Category
PM <sub>10</sub>	273	Poor	319	Poor
PM <sub>2.5</sub>	162	Very Poor	189	Very Poor

### Wind Forecast for Delhi:

	Wind speed (at surface) in km/h		Wind speed (at 900 m) in km/h	Wind Direction	
	As per IMD (at 17:30 hrs.)	As per windy.com (at 16:00 hrs.)	As per windy.com (at 16:00hrs)	As per IMD (at 17:30hrs.)	As per windy.com at 900m
January 14, 2022	04	06	11	N	NW
January 15, 2022	05	08	18	NNE	NW
January 16, 2022	04	09	16	NW	NW

### IMD Alert for Tomorrow (14.01.2022):

The air quality is likely to remain lower end of Very Poor category on 14.01.2022 and 15.01.2022. The predominant surface wind is likely to be calm in the morning hours and coming from Northeast/North direction of Delhi with wind speed 04-06 kmph, partly cloudy sky and moderate to dense fog in the morning. Ventilation index is likely to be 3,000 m<sup>2</sup>/s.



### Hotspots for Today

City	Station Name	AQI value	Air Quality	Prominent Pollutant
Delhi	Anand Vihar, Delhi - DPCC	432	Severe	PM <sub>10</sub>
	Nehru Nagar, Delhi - DPCC	392	Very Poor	PM <sub>2.5</sub>
	Jahangirpuri, Delhi - DPCC	379	Very Poor	PM <sub>2.5</sub>
	Patparganj, Delhi - DPCC	377	Very Poor	PM <sub>2.5</sub>
	Punjabi Bagh, Delhi - DPCC	369	Very Poor	PM <sub>2.5</sub>
Faridabad	Sector- 16A, Faridabad - HSPCB	336	Very Poor	PM <sub>2.5</sub>
	Sector 30, Faridabad - HSPCB	300	Very Poor	PM <sub>2.5</sub>
Gurugram	Sector-51, Gurugram - HSPCB	372	Very Poor	PM <sub>2.5</sub>
	NISE Gwal Pahari, Gurugram - IMD	233	Poor	PM <sub>2.5</sub>
Ghaziabad	Loni, Ghaziabad - UPPCB	376	Very Poor	PM <sub>2.5</sub>
	Indirapuram, Ghaziabad - UPPCB	320	Very Poor	PM <sub>2.5</sub>
Greater Noida	Knowledge Park - V, Greater Noida - UPPCB	342	Very Poor	PM <sub>2.5</sub>
Noida	Sector-1, Noida - UPPCB	325	Very Poor	PM <sub>2.5</sub>
	Sector-116, Noida - UPPCB	316	Very Poor	PM <sub>2.5</sub>