



# Central Pollution Control Board

Air Quality Status for Delhi & NCR

Dated – November 12, 2022



## Current Air Quality Status:

### Air Quality Index (AQI) (Average of past 24 hours)

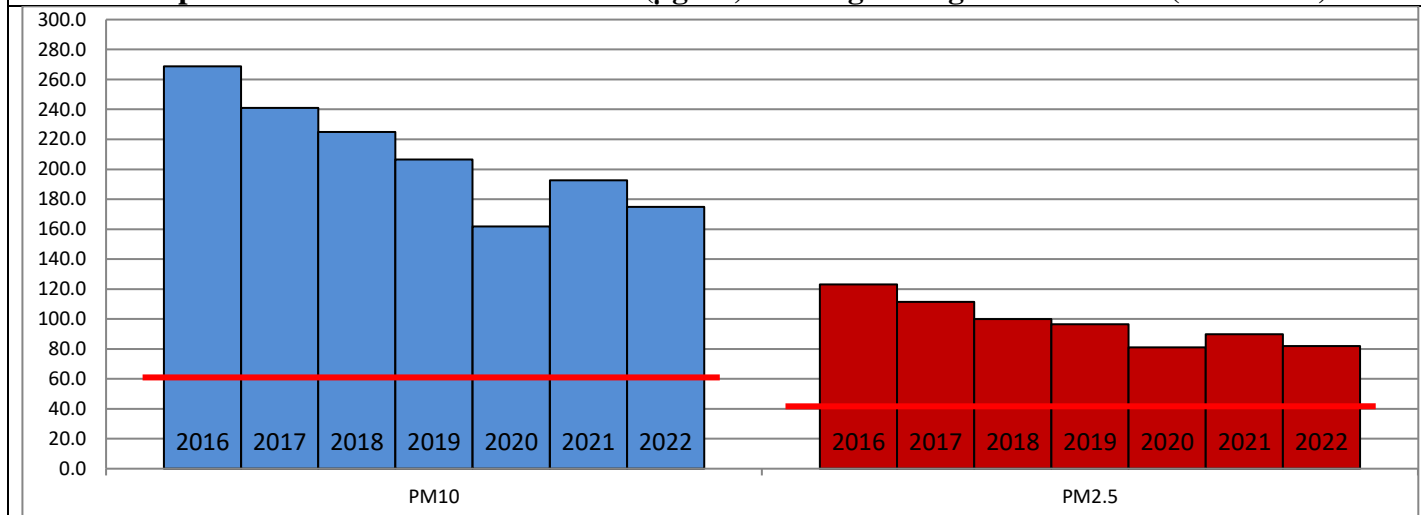
	Air Quality	AQI Value	Prominent Pollutant
Delhi	Very Poor	303 ↓	PM <sub>2.5</sub>
Faridabad	Poor	274 ↓	PM <sub>2.5</sub>
Ghaziabad	Poor	236 ↓	PM <sub>2.5</sub>
Greater Noida	Poor	240 ↓	PM <sub>10</sub>
Gurugram	Poor	286 ↓	PM <sub>2.5</sub> , PM <sub>10</sub>
Noida	Poor	233 ↓	PM <sub>2.5</sub>

\*Data available for 37 stations in Delhi today. # ↓ ↑ arrows indicate a decrease/increase as compared to the value on the previous day.

### Comparative status of AQI - Delhi from 01 January to 12 November 2016-2022

Category	Year	2016	2017	2018	2019	2020	2021	2022	2016	2017	2018	2019	2020	2021	2022
	No. of days	305	316	316	316	317	316	316							
Good (0–50)		0	2	0	2	5	1	3							
Satisfactory (51–100)		24	45	53	58	95	81	65	110	150	158	175	224	197	160
Moderate (101–200)		86	103	105	115	124	115	92							
Poor (201–300)		116	102	104	90	56	69	117							
Very Poor (301–400)		61	57	43	38	29	38	35	195	166	158	141	93	119	156
Severe (>401)		18	7	11	13	8	12	4							

### Comparative status of PM<sub>10</sub> and PM<sub>2.5</sub> (µg/m<sup>3</sup>) running average – Till Nov 11 (2016-2022)



### Hotspots for Today:

\*Details given overleaf

Delhi	NSIT Dwarka Jahangirpuri, Shadipur, R K Puram, Anand Vihar	Ghaziabad	Vasundhara
Faridabad	Sector- 16A, New Industrial Town	Greater Noida	Knowledge Park-III
Gurugram	Teri Gram, NISE Gwal Pahari	Noida	Sector – 1, Sector-62

### Forecast by IITM (Delhi):

	Nov 13, 2022		Nov 14, 2022- Nov 15, 2022	
	Concentration	AQI Category	Concentration	AQI Category
PM <sub>10</sub>	230	Moderate	253	Poor
PM <sub>2.5</sub>	132	Very Poor	145	Very Poor

## Wind Forecast for Delhi:

	Wind speed (at surface) in km/h		Wind speed (at 900 m) in km/h	Wind Direction	
	As per IMD (range)	As per windy.com (at 16:00 hrs.)	As per windy.com (at 16:00hrs)	As per IMD	As per windy.com at 900m
Nov 13, 2022	08-16	08	23	N/NW	NW
Nov 14, 2022	06-10	04	06	N/NW	SE
Nov 15, 2022	10-14	05	13	NW	W

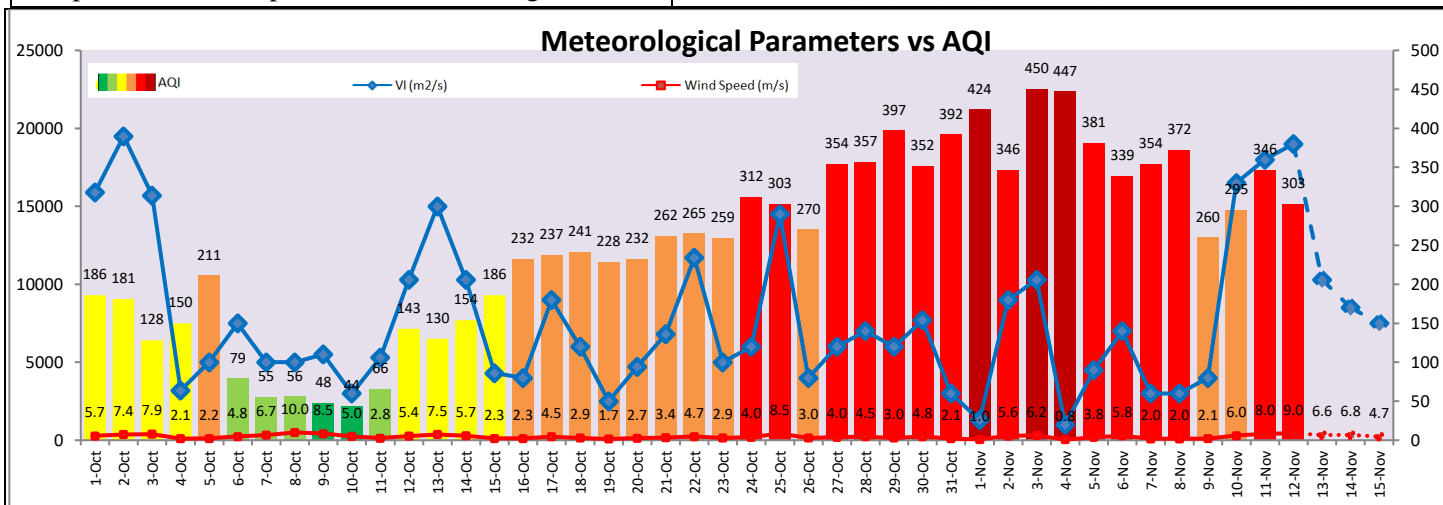
## IMD Alert for Tomorrow (13.11.2022):

The overall air quality over Delhi is likely to remain in Poor category on 13.11.2022. The predominant surface wind is likely to be coming from Northwest/North direction in Delhi with wind speed 08-16 kmph, mainly clear sky and mist/shallow fog in the morning tomorrow. Ventilation index is likely to be 10,300 m<sup>2</sup>/s.

## Active Fire Events (AFEs):

Date	Punjab		Haryana	
	Nos. on the day	Total since September 15	Nos. on the day	Total since September 15
12.11.2022	2467	43144	99	2979
12.11.2021	3403	59121	127	5190

\* As per IITM, the impact of stubble burning is ~17%.



## Hotspots for Today \*Data not available for 04:00PM

City	Station Name	AQI value	Air Quality	Prominent Pollutant
Delhi	Jahangirpuri, Delhi - DPCC	352	Very Poor	PM <sub>2.5</sub>
	Shadipur, Delhi - CPCB	350	Very Poor	PM <sub>2.5</sub>
	R K Puram, Delhi - DPCC	344	Very Poor	PM <sub>2.5</sub>
	NSIT Dwarka, Delhi - CPCB	334	Very Poor	PM <sub>10</sub>
	Anand Vihar, Delhi - DPCC	330	Very Poor	PM <sub>10</sub>
Faridabad	Sector- 16A, Faridabad - HSPCB	306	Very Poor	PM <sub>2.5</sub>
	New Industrial Town, Faridabad - HSPCB	291	Poor	PM <sub>10</sub>
Gurugram	NISE Gwal Pahari, Gurugram - IMD	311	Very Poor	PM <sub>2.5</sub>
	Teri Gram, Gurugram - HSPCB	306	Very Poor	PM <sub>10</sub>
Ghaziabad	Vasundhara, Ghaziabad - UPPCB	269	Poor	PM <sub>10</sub>
Greater Noida	Knowledge Park - III, Greater Noida - UPPCB	260	Poor	PM <sub>10</sub>
Noida	Sector - 62, Noida - IMD	290	Poor	PM <sub>2.5</sub>
	Sector-1, Noida - UPPCB	241	Poor	PM <sub>2.5</sub>