



Central Pollution Control Board

Air Quality Status for Delhi & NCR

Dated – November 12, 2021



Current Air Quality Status:

Air Quality Index (AQI) (Average of past 24 hours)

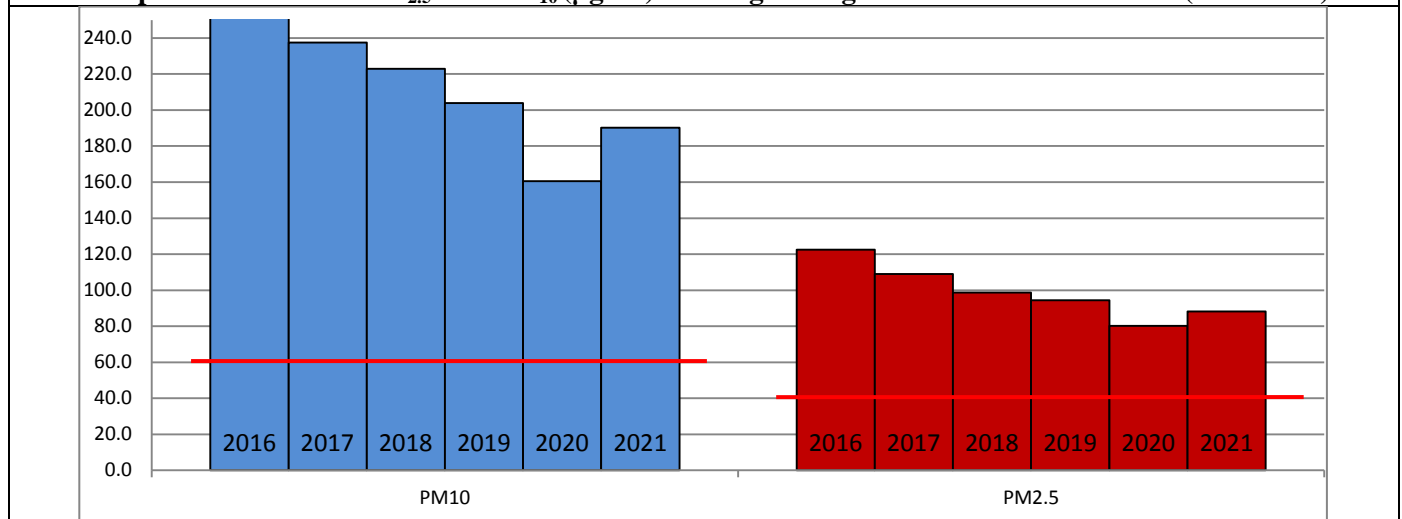
	Air Quality	AQI Value	Prominent Pollutant
Delhi	Severe	471 ↓	PM ₁₀ , PM _{2.5}
Faridabad	Severe	460 ↓	PM ₁₀ , PM _{2.5}
Ghaziabad	Severe	486 ↓	PM _{2.5}
Greater Noida	Severe	478 ↓	PM _{2.5}
Gurugram	Severe	448 ↓	PM _{2.5}
Noida	Severe	488 ↓	PM ₁₀ , PM _{2.5}

*Data available for 36 stations in Delhi today. # ↓, ↑ arrows indicate increase/decrease as compared to value on the previous day

Comparative status of AQI - Delhi from 01 January to 12 November 2016-2021

Category	Year	2016	2017	2018	2019	2020	2021						
								2016	2017	2018	2019	2020	2021
	No. of days	305	316	316	316	317	316						
Good (0-50)		0	2	0	2	5	1						
Satisfactory (51-100)		25	45	53	58	95	72	108	150	158	175	224	197
Moderate (101-200)		83	103	105	115	124	124						
Poor (201-300)		116	102	104	90	56	69						
Very Poor (301-400)		63	57	43	38	29	38	197	166	158	141	93	119
Severe (>401)		18	7	11	13	8	12						

Comparative status of PM_{2.5} and PM₁₀ (µg/m³) running average - Delhi till November 11 (2016-2021)



* The PM values are 24 hourly averages (6 am to 6 am)

Hotspots for Today:

*Details given overleaf

Delhi	Jahangirpuri, Chandni Chowk, Mundka, Wazirpur, Rohini	Greater Noida	Knowledge Park – III
Faridabad	Sector 11, Sector 16 A	Gurugram	Vikas Sadan, NISE GwalPahari
Ghaziabad	Loni, Sanjay Nagar	Noida	Sector – 62, Sector – 116

Forecast by IITM:

Parameters	November 13, 2021		November 14, 2021– November 15, 2021	
	Concentration	AQI Category	Concentration	AQI Category
PM ₁₀	584	Severe	606	Severe
PM _{2.5}	375	Severe	389	Severe

▪ **Wind Forecast for Delhi:**

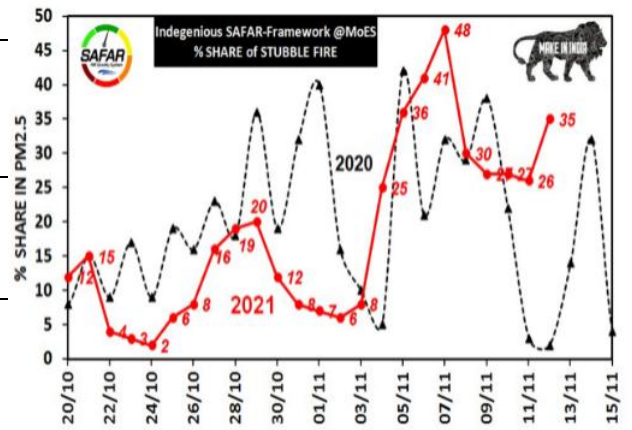
Dates	Wind speed (at surface) in km/h		Wind speed (at 900 m) in km/h	Wind Direction	
	As per IMD (at 17:30 hrs.)	As per windy.com (at 16:00 hrs.)	As per windy.com (at 16:00hrs)	As per IMD (at 17:30hrs.)	As per windy.com at 900m
November 13, 2021	CALM	10	24	-	NW
November 14, 2021	CALM	04	12	-	NW
November 15, 2021	CALM	09	19	-	NW

▪ **IMD Alert for Tomorrow (13.11.2021):**

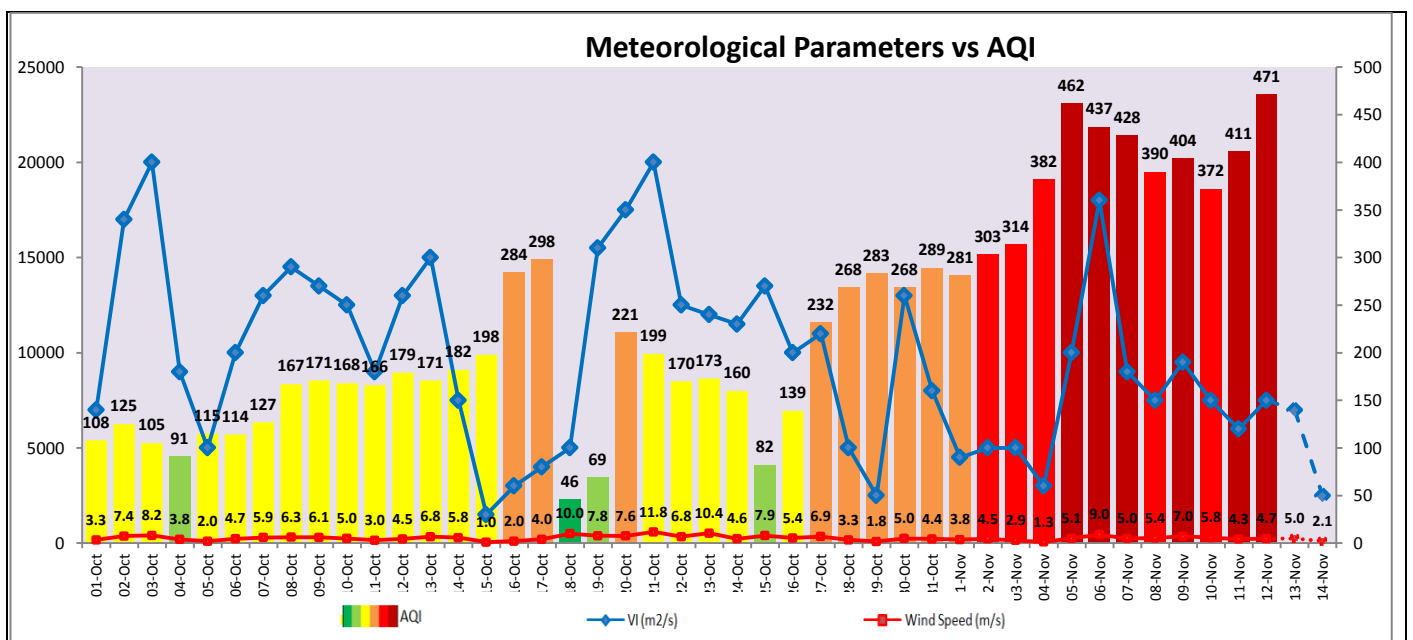
The air quality over Delhi-NCT is likely to remain in category on 13.11.2021 tomorrow. The predominant surface wind is likely to be coming from Northwest directions of Delhi with wind speed of 08-12 kmph during day time, likely to be calm during evening/night, mainly clear sky and **moderate fog in the morning**. Ventilation index is likely to be 7,000m²/s.

▪ **Active Fire Events (AFEs)**

Date	Punjab		Haryana	
	Nos. on the day	Total since September 21	Nos. on the day	Total since September 21
11.11.2021	4156	55718	126	5063
11.11.2020	2822	75321	93	3447



The contribution of biomass burning in PM_{2.5} concentration is likely to be approximately 10% on 12.11.2021 and 13.11.2021 as winds are favourable for transportation of pollutants.



▪ **Hotspots for Today**

City	Station Name	AQI value	Air Quality	Prominent Pollutant
Delhi	Jahangirpuri, Delhi - DPCC	495	Severe	PM ₁₀
	Chandni Chowk, Delhi - IITM	494	Severe	PM _{2.5}
	Mundka, Delhi - DPCC	494	Severe	PM _{2.5}
	Wazirpur, Delhi - DPCC	494	Severe	PM _{2.5}
	Rohini, Delhi - DPCC	493	Severe	PM _{2.5}
Faridabad	Sector- 16A, Faridabad - HSPCB	478	Severe	PM ₁₀
	Sector 11, Faridabad - HSPCB	474	Severe	PM _{2.5}
Gurugram	NISE Gwal Pahari, Gurugram - IMD	453	Severe	PM _{2.5}
	Vikas Sadan, Gurugram - HSPCB	452	Severe	PM _{2.5}
Ghaziabad	Indirapuram, Ghaziabad - UPPCB	490	Severe	PM _{2.5}
	Loni, Ghaziabad - UPPCB	490	Severe	PM _{2.5}
Greater Noida	Knowledge Park - III, Greater Noida - UPPCB	481	Severe	PM _{2.5}
Noida	Sector - 62, Noida - IMD	491	Severe	PM _{2.5}
	Sector-116, Noida - UPPCB	488	Severe	PM _{2.5}