



# Central Pollution Control Board

## Air Quality Status for Delhi & NCR

Dated – October 12, 2022



### Current Air Quality Status:

#### Air Quality Index (AQI) (Average of past 24 hours)

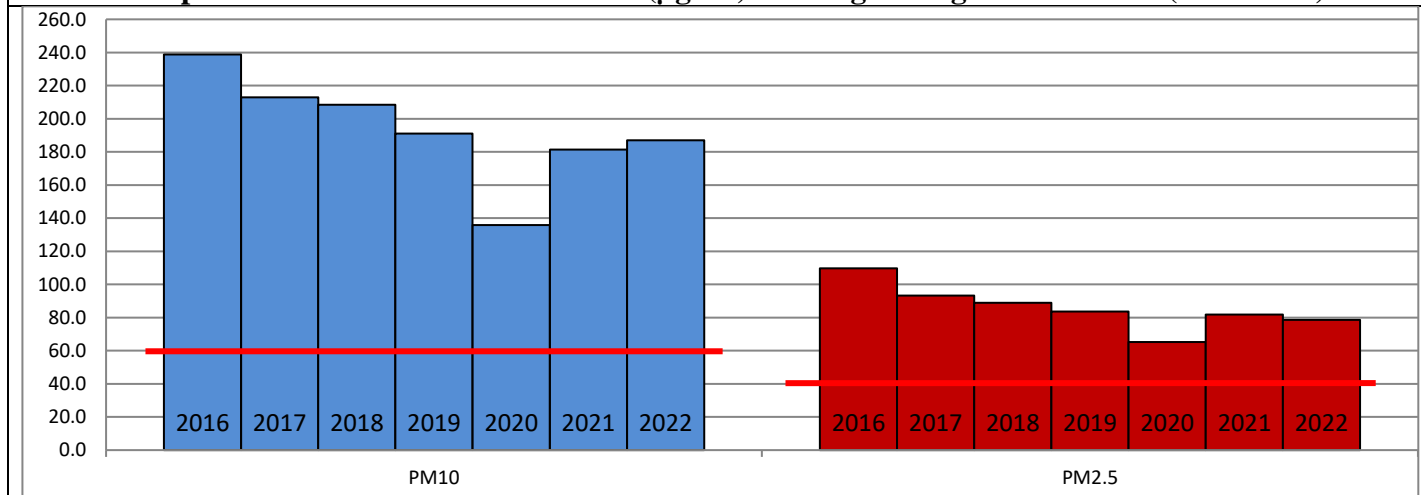
|               | Air Quality | AQI Value | Prominent Pollutant                                   |
|---------------|-------------|-----------|---|
| Delhi         | Moderate    | 143 ↓     | O <sub>3</sub> , PM <sub>10</sub> , PM <sub>2.5</sub> |
| Faridabad     | Moderate    | 161 ↓     | O <sub>3</sub> , PM <sub>10</sub>                     |
| Ghaziabad     | Moderate    | 167 ↓     | O <sub>3</sub> , PM <sub>10</sub> , PM <sub>2.5</sub> |
| Greater Noida | Moderate    | 180 ↓     | O <sub>3</sub> , PM <sub>10</sub>                     |
| Gurugram      | Moderate    | 120 ↓     | PM <sub>10</sub> , PM <sub>2.5</sub> , CO             |
| Noida         | Moderate    | 188 ↓     | O <sub>3</sub> , PM <sub>10</sub>                     |

\*Data available for 31 stations in Delhi today. # ↓ ↑ arrows indicate a decrease/increase as compared to the value on the previous day.

#### Comparative status of AQI - Delhi from 01 January to 12 October 2016-2022

| Category              | Year        | 2016 | 2017 | 2018 | 2019 | 2020 | 2021 | 2022 | 2016 | 2017 | 2018 | 2019 | 2020 | 2021 | 2022 |
|-----------------------|-------------|------|------|------|------|------|------|------|------|------|------|------|------|------|------|
|                       | No. of days | 274  | 285  | 285  | 285  | 286  | 285  | 285  |      |      |      |      |      |      |      |
| Good (0–50)           |             | 0    | 2    | 0    | 2    | 5    | 0    | 3    |      |      |      |      |      |      |      |
| Satisfactory (51–100) |             | 24   | 45   | 53   | 58   | 95   | 79   | 65   | 110  | 150  | 157  | 174  | 224  | 186  | 157  |
| Moderate (101–200)    |             | 86   | 103  | 104  | 114  | 124  | 107  | 89   |      |      |      |      |      |      |      |
| Poor (201–300)        |             | 104  | 99   | 94   | 77   | 45   | 60   | 106  |      |      |      |      |      |      |      |
| Very Poor (301–400)   |             | 54   | 36   | 28   | 27   | 15   | 33   | 21   | 164  | 135  | 128  | 111  | 62   | 99   | 128  |
| Severe (>401)         |             | 6    | 0    | 6    | 7    | 2    | 6    | 1    |      |      |      |      |      |      |      |

#### Comparative status of PM<sub>10</sub> and PM<sub>2.5</sub> (µg/m<sup>3</sup>) running average – Till Oct 10 (2016-2022)



#### Hotspots for Today:

\*Details given overleaf

|           |   |               |                      |
|-----------|---|---------------|----------------------|
| Delhi     | Nehru Nagar, R K Puram, Anand Vihar, Patparganj, Pusa | Ghaziabad     | Indirapuram, Loni    |
| Faridabad | New Industrial Town, Sector-16A                       | Greater Noida | Knowledge Park-V     |
| Gurugram  | Sector-51, Teri Gram                                  | Noida         | Sector-1, Sector-116 |

#### Forecast by IITM (Delhi):

|                   | Oct 13, 2022  |              | Oct 14, 2022- Oct 15, 2022 |              |
|-------------------|---------------|--------------|----------------------------|--------------|
|                   | Concentration | AQI Category | Concentration              | AQI Category |
| PM <sub>10</sub>  | 115           | Moderate     | 126                        | Moderate     |
| PM <sub>2.5</sub> | 52            | Satisfactory | 58                         | Satisfactory |

### Wind Forecast for Delhi:

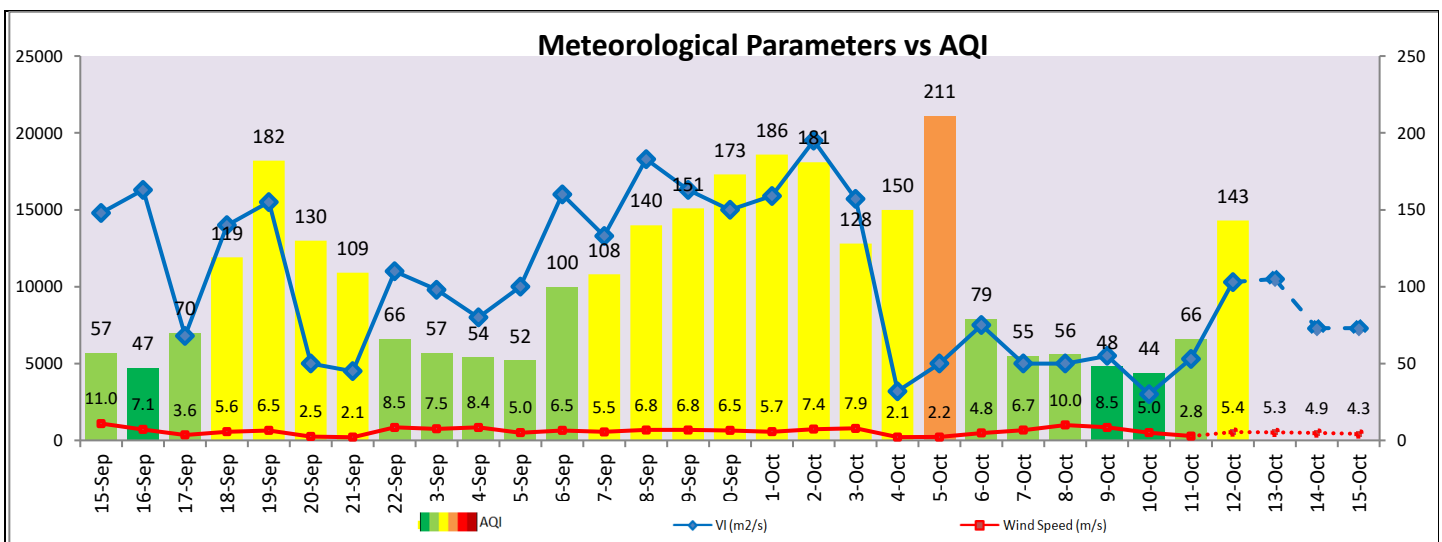
|              | Wind speed (at surface) in km/h |                                  | Wind speed (at 900 m) in km/h  | Wind Direction |                          |
|--------------|---------------------------------|----------------------------------|--------------------------------|----------------|--------------------------|
|              | As per IMD (range)              | As per windy.com (at 16:00 hrs.) | As per windy.com (at 16:00hrs) | As per IMD     | As per windy.com at 900m |
| Oct 13, 2022 | 04-10                           | 08                               | 31                             | N              | NW                       |
| Oct 14, 2022 | 08-12                           | 08                               | 31                             | N              | NW                       |
| Oct 15, 2022 | 04-08                           | 07                               | 18                             | N              | NW                       |

### IMD Alert for Tomorrow (13.10.2022):

The overall air quality over Delhi is likely to remain in Moderate category on 13.10.2022. The predominant surface wind is likely to be coming from North direction in Delhi with wind speed 04-10 kmph and partly cloudy sky tomorrow. Ventilation index is likely to be 10,500 m<sup>2</sup>/s.

### Active Fire Events (AFEs):

| Date       | Punjab          |                          | Haryana         |                          |
|------------|-----------------|--------------------------|-----------------|--------------------------|
|            | Nos. on the day | Total since September 15 | Nos. on the day | Total since September 15 |
| 12.10.2022 | 104             | 867                      | 4               | 87                       |
| 12.10.2021 | 97              | 925                      | 51              | 298                      |



### Hotspots for Today

| City          | Station Name                              | AQI value | Air Quality | Prominent Pollutant |
|---------------|---|-----------|-------------|---------------------|
| Delhi         | Nehru Nagar, Delhi - DPCC                 | 256       | Poor        | O <sub>3</sub>      |
|               | R K Puram, Delhi - DPCC                   | 247       | Poor        | O <sub>3</sub>      |
|               | Anand Vihar, Delhi - DPCC                 | 234       | Poor        | PM <sub>2.5</sub>   |
|               | Patparganj, Delhi - DPCC                  | 224       | Poor        | O <sub>3</sub>      |
|               | Pusa, Delhi - DPCC                        | 187       | Moderate    | PM <sub>10</sub>    |
| Faridabad     | New Industrial Town, Faridabad - HSPCB    | 186       | Moderate    | PM <sub>10</sub>    |
|               | Sector- 16A, Faridabad - HSPCB            | 168       | Moderate    | O <sub>3</sub>      |
| Gurugram      | Sector-51, Gurugram - HSPCB               | 177       | Moderate    | PM <sub>2.5</sub>   |
|               | Teri Gram, Gurugram - HSPCB               | 161       | Moderate    | PM <sub>10</sub>    |
| Ghaziabad     | Indirapuram, Ghaziabad - UPPCB            | 210       | Poor        | PM <sub>2.5</sub>   |
|               | Loni, Ghaziabad - UPPCB                   | 177       | Moderate    | O <sub>3</sub>      |
| Greater Noida | Knowledge Park - V, Greater Noida - UPPCB | 200       | Moderate    | O <sub>3</sub>      |
| Noida         | Sector-1, Noida - UPPCB                   | 239       | Poor        | O <sub>3</sub>      |
|               | Sector-116, Noida - UPPCB                 | 208       | Poor        | PM <sub>10</sub>    |