



Central Pollution Control Board

Air Quality Status for Delhi & NCR

Dated – August 12, 2022



Current Air Quality Status:

Air Quality Index (AQI) (Average of past 24 hours)

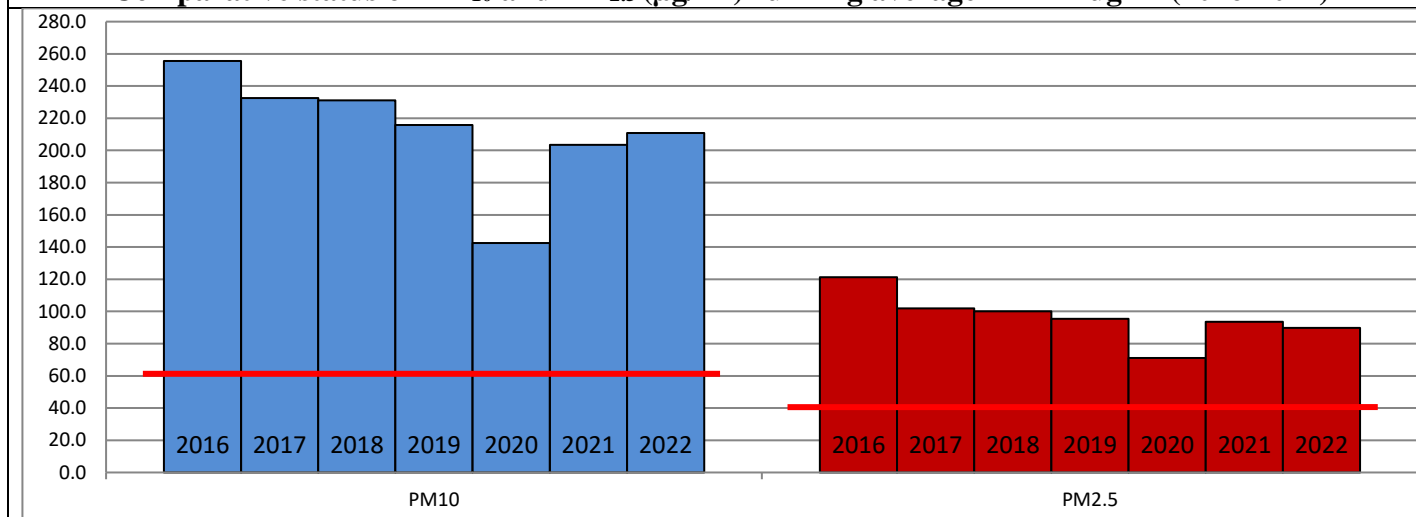
| | Air Quality | AQI Value | Prominent Pollutant |
|---------------|--------------|-----------|-----------------------------------|
| Delhi | Satisfactory | 88 ↓ | CO, PM ₁₀ |
| Faridabad | Moderate | 118 ↑ | PM ₁₀ , O ₃ |
| Ghaziabad | Satisfactory | 58 ↓ | PM ₁₀ |
| Greater Noida | Satisfactory | 70 | CO, O ₃ |
| Gurugram | Satisfactory | 61 ↓ | PM ₁₀ , O ₃ |
| Noida | Satisfactory | 73 ↓ | CO, PM ₁₀ |

*Data available for 13 stations in Delhi today. # ↓ ↑ arrows indicate a decrease/increase as compared to the value on the previous day.

Comparative status of AQI - Delhi from 01 January to 12 August 2016-2022

| Category | Year | 2016 | 2017 | 2018 | 2019 | 2020 | 2021 | 2022 | 2016 | 2017 | 2018 | 2019 | 2020 | 2021 | 2022 |
|-----------------------|-------------|------|------|------|------|------|------|------|------|------|------|------|------|------|------|
| | No. of days | 213 | 224 | 224 | 224 | 225 | 224 | 224 | | | | | | | |
| Good (0–50) | | 0 | 2 | 0 | 0 | 1 | 0 | 0 | | | | | | | |
| Satisfactory (51–100) | | 13 | 23 | 25 | 26 | 72 | 43 | 39 | 62 | 99 | 104 | 116 | 169 | 125 | 97 |
| Moderate (101–200) | | 49 | 74 | 79 | 90 | 96 | 82 | 58 | | | | | | | |
| Poor (201–300) | | 91 | 89 | 86 | 74 | 39 | 60 | 105 | | | | | | | |
| Very Poor (301–400) | | 54 | 36 | 28 | 27 | 15 | 33 | 21 | 151 | 125 | 120 | 108 | 56 | 99 | 127 |
| Severe (>401) | | 6 | 0 | 6 | 7 | 2 | 6 | 1 | | | | | | | |

Comparative status of PM₁₀ and PM_{2.5} (µg/m³) running average – Till Aug 11 (2016-2022)



Hotspots for Today:

*Details given overleaf

| | | | |
|-----------|---|---------------|---------------------|
| Delhi | Burari Crossing, Pusa-IMD, North Campus, IGI Airport (T3) | Gurugram | Sector-51 |
| Faridabad | Sector-16A | Greater Noida | Knowledge Park-V |
| Ghaziabad | Indirapuram, Loni | Noida | Sector-62, Sector-1 |

Forecast by IITM (Delhi):

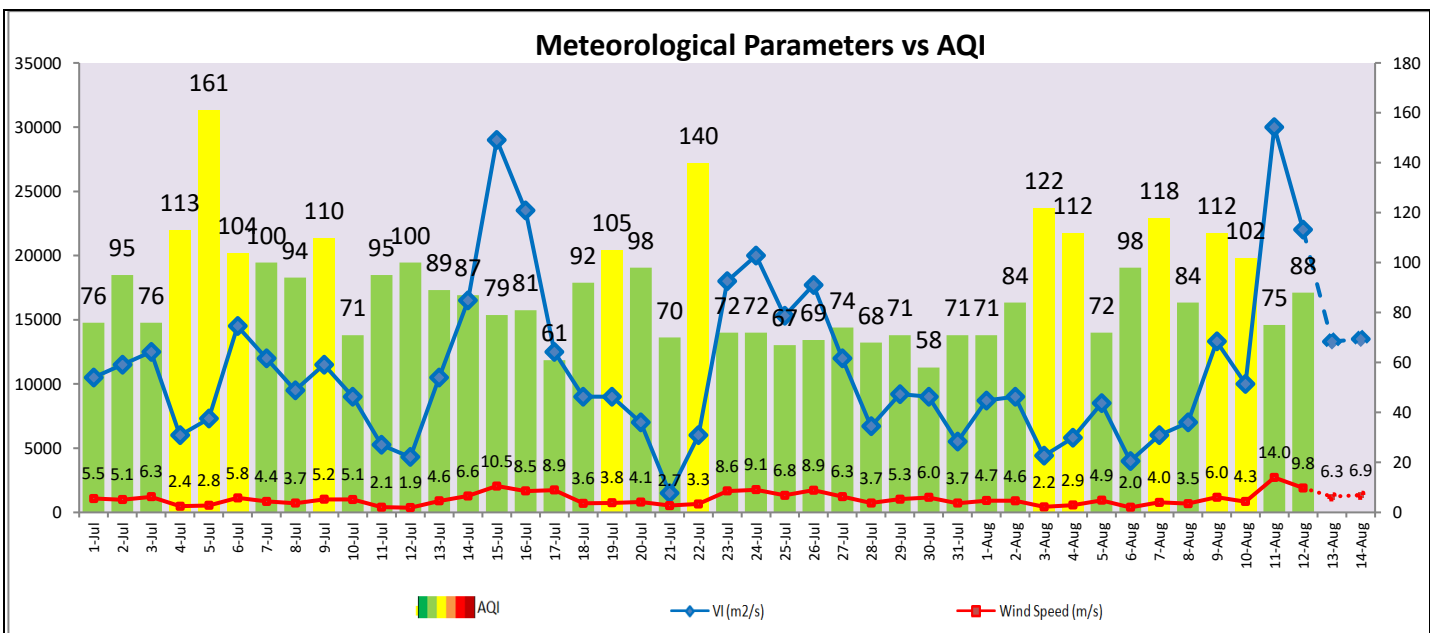
| Parameters | Aug 13, 2022 | | Aug 14, 2022- Aug 15, 2022 | |
|-------------------|---------------|--------------|----------------------------|--------------|
| | Concentration | AQI Category | Concentration | AQI Category |
| PM ₁₀ | 71 | Satisfactory | 83 | Satisfactory |
| PM _{2.5} | 24 | Good | 28 | Good |

▪ **Wind Forecast for Delhi:**

| | Wind speed (at surface) in km/h | | Wind speed (at 900 m) in km/h | Wind Direction | |
|--------------|---------------------------------|----------------------------------|--------------------------------|----------------|--------------------------|
| | As per IMD (range) | As per windy.com (at 16:00 hrs.) | As per windy.com (at 16:00hrs) | As per IMD | As per windy.com at 900m |
| Aug 13, 2022 | 16-24 | 11 | 20 | E | E |
| Aug 14, 2022 | 08-10 | 07 | 14 | S | NE |
| Aug 15, 2022 | 12-16 | 16 | 42 | SE | E |

▪ **IMD Alert for Tomorrow (13.08.2022):**

The air quality over Delhi is likely to remain in Satisfactory category on 13.08.2022 owing to strong winds and better ventilation conditions. The predominant surface wind is likely to be coming from East direction in Delhi with wind speed 16-24 kmph, generally cloudy sky and possibility of very light rain/thundershowers towards afternoon/evening tomorrow. Ventilation index is likely to be 13,300 m²/s.



▪ **Hotspots for Today**

| City | Station Name | AQI value | Air Quality | Prominent Pollutant |
|---------------|---|-----------|--------------|---------------------|
| Delhi | Burari Crossing, Delhi - IMD | 269 | Poor | PM ₁₀ |
| | Pusa, Delhi - IMD | 108 | Moderate | CO |
| | North Campus, DU, Delhi - IMD | 102 | Moderate | CO |
| | IGI Airport (T3), Delhi - IMD | 90 | Satisfactory | CO |
| Faridabad | Sector- 16A, Faridabad - HSPCB | 233 | Poor | O ₃ |
| Gurugram | Sector-51, Gurugram - HSPCB | 78 | Satisfactory | PM ₁₀ |
| Ghaziabad | Loni, Ghaziabad - UPPCB | 66 | Satisfactory | PM ₁₀ |
| | Indirapuram, Ghaziabad - UPPCB | 62 | Satisfactory | PM ₁₀ |
| Greater Noida | Knowledge Park - V, Greater Noida - UPPCB | 92 | Satisfactory | CO |
| Noida | Sector-1, Noida - UPPCB | 97 | Satisfactory | CO |
| | Sector - 62, Noida - IMD | 83 | Satisfactory | CO |