



Central Pollution Control Board

Air Quality Status for Delhi & NCR

Dated – June 12, 2022



Current Air Quality Status:

Air Quality Index (AQI) (Average of past 24 hours)

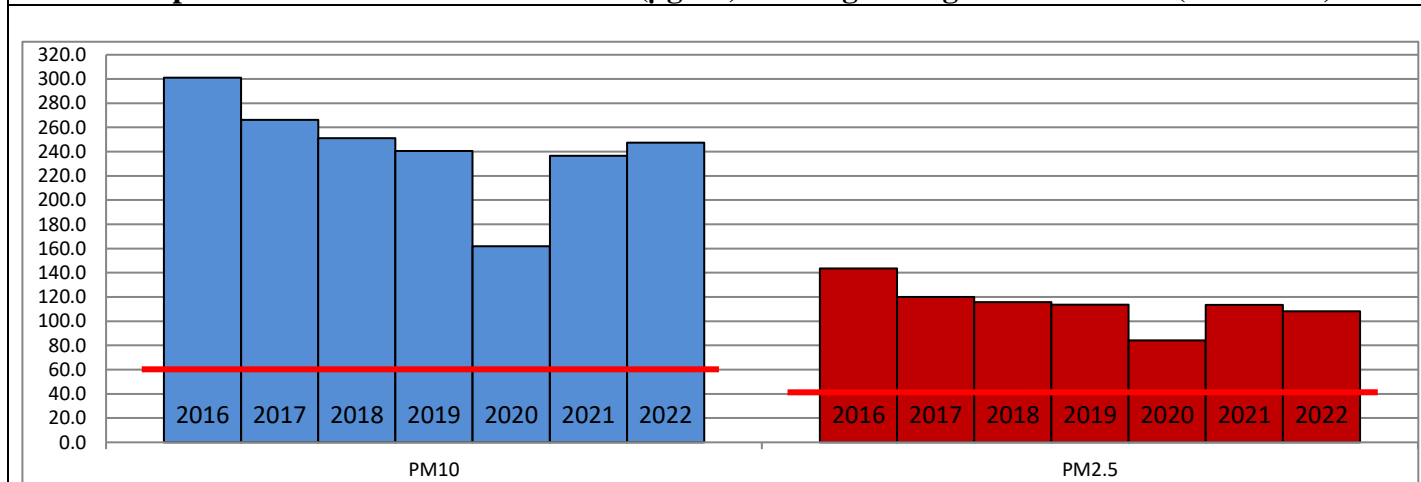
	Air Quality	AQI Value	Prominent Pollutant
Delhi	Poor	249↓	PM ₁₀
Faridabad	Poor	210↓	PM _{2.5} , PM ₁₀
Ghaziabad	Poor	292↓	PM ₁₀
Greater Noida	Poor	257↓	PM ₁₀
Gurugram	Poor	234↓	PM _{2.5} , PM ₁₀
Noida	Poor	298↓	PM ₁₀

*Data available for 35 stations in Delhi today. # ↓ ↑ arrows indicate a decrease/increase as compared to the value on the previous day.

Comparative status of AQI - Delhi from 01 January to 12 June 2016-2022

Category	Year	2016	2017	2018	2019	2020	2021	2022	2016	2017	2018	2019	2020	2021	2022
	No. of days	159	163	163	163	164	163	163							
Good (0–50)		0	0	0	0	1	0	0							
Satisfactory (51–100)		0	0	1	2	29	6	4	17	41	55	63	110	68	38
Moderate (101–200)		17	41	54	61	80	62	34							
Poor (201–300)		83	86	78	67	37	56	103							
Very Poor (301–400)		53	36	27	26	15	33	21	142	122	108	100	54	95	125
Severe (>401)		6	0	3	7	2	6	1							

Comparative status of PM_{2.5} and PM₁₀ (µg/m³) running average – Till June 09 (2016-2022)



Hotspots for Today:

*Details given overleaf

Delhi	Mundka, Anand Vihar, Vivek Vihar, Bawana, Narela	Gurugram	Teri Gram
Faridabad	Sector-11	Greater Noida	Knowledge Park-III
Ghaziabad	Loni, Vasundhara	Noida	Sector-125, Sector-62

Forecast by IITM (Delhi):

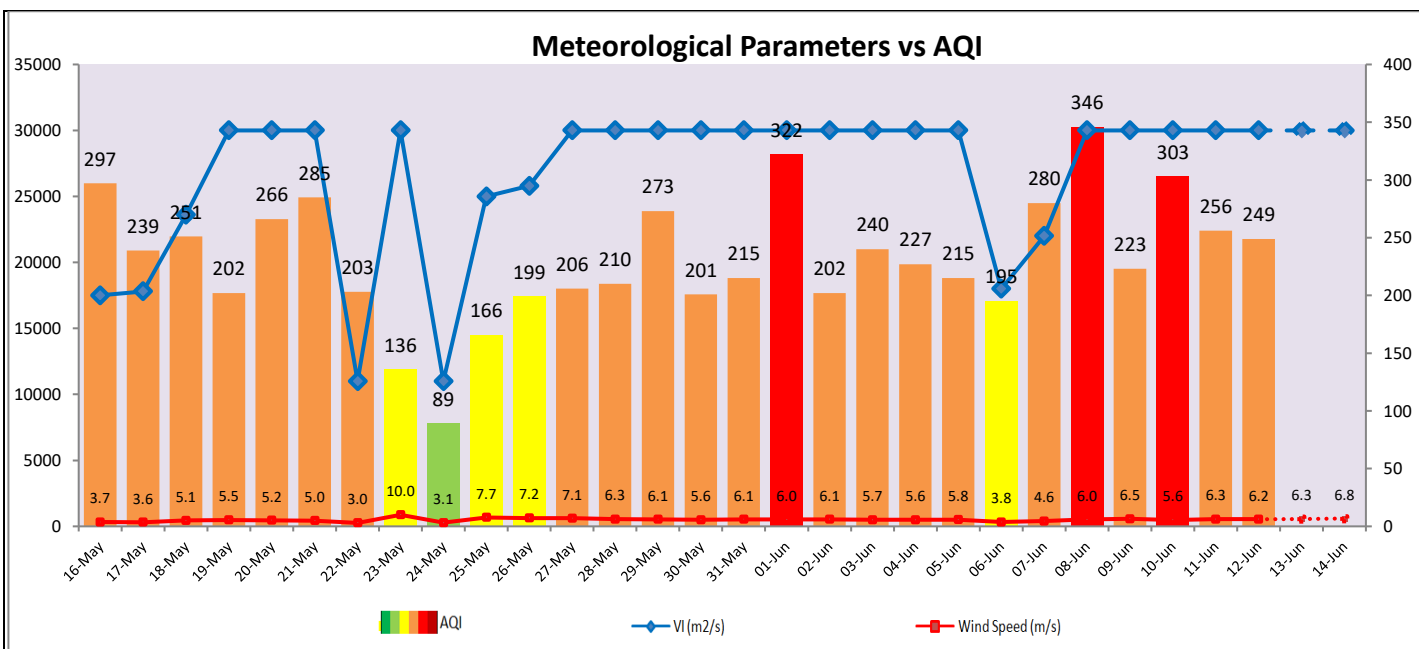
Parameters	June 13, 2022		June 14, 2022- June 15, 2022	
	Concentration	AQI Category	Concentration	AQI Category
PM ₁₀	241	Moderate	214	Moderate
PM _{2.5}	67	Moderate	60	Satisfactory

Wind Forecast for Delhi:

	Wind speed (at surface) in km/h		Wind speed (at 900 m) in km/h	Wind Direction	
	As per IMD (at 17:30 hrs.)	As per windy.com (at 16:00 hrs.)	As per windy.com (at 16:00hrs)	As per IMD (at 17:30hrs.)	As per windy.com at 900m
June 13, 2022	24	24	37	W	W
June 14, 2022	30	22	34	W	W
June 15, 2022	32	19	29	W	W

IMD Alert for Tomorrow (13.06.2022):

The air quality is likely to remain in Poor category from 13.06.2022 to 14.06.2022. The predominant surface wind is likely to be coming from Northwest/West direction in Delhi with wind speed 24-28 kmph, partly cloudy sky with possibility of thundery development, heat wave conditons and strong surface winds (speed 20-30 kmph) during the day tomorrow. **Long range transported dust will impact air quality over parts of Rajasthan, Gujarat, MP and NCR during next two days.** Ventilation index is likely to be more than 30,000 m²/s.



Hotspots for Today

City	Station Name	AQI value	Air Quality	Prominent Pollutant
Delhi	Mundka, Delhi - DPCC	373	Very Poor	PM ₁₀
	Anand Vihar, Delhi - DPCC	341	Very Poor	PM ₁₀
	Vivek Vihar, Delhi - DPCC	322	Very Poor	PM ₁₀
	Bawana, Delhi - DPCC	320	Very Poor	PM ₁₀
	Narela, Delhi - DPCC	310	Very Poor	PM ₁₀
Faridabad	Sector 11, Faridabad - HSPCB	267	Poor	PM _{2.5}
Gurugram	Teri Gram, Gurugram - HSPCB	270	Poor	PM ₁₀
Ghaziabad	Loni, Ghaziabad - UPPCB	415	Severe	PM ₁₀
	Vasundhara, Ghaziabad - UPPCB	304	Very Poor	PM ₁₀
Greater Noida	Knowledge Park - III, Greater Noida - UPPCB	277	Poor	PM ₁₀
Noida	Sector - 125, Noida - UPPCB	330	Very Poor	PM ₁₀
	Sector - 62, Noida - IMD	314	Very Poor	PM ₁₀