



# Central Pollution Control Board

## Air Quality Status for Delhi &NCR

Dated – April 12, 2022



### Current Air Quality Status:

#### Air Quality Index (AQI) (Average of past 24 hours)

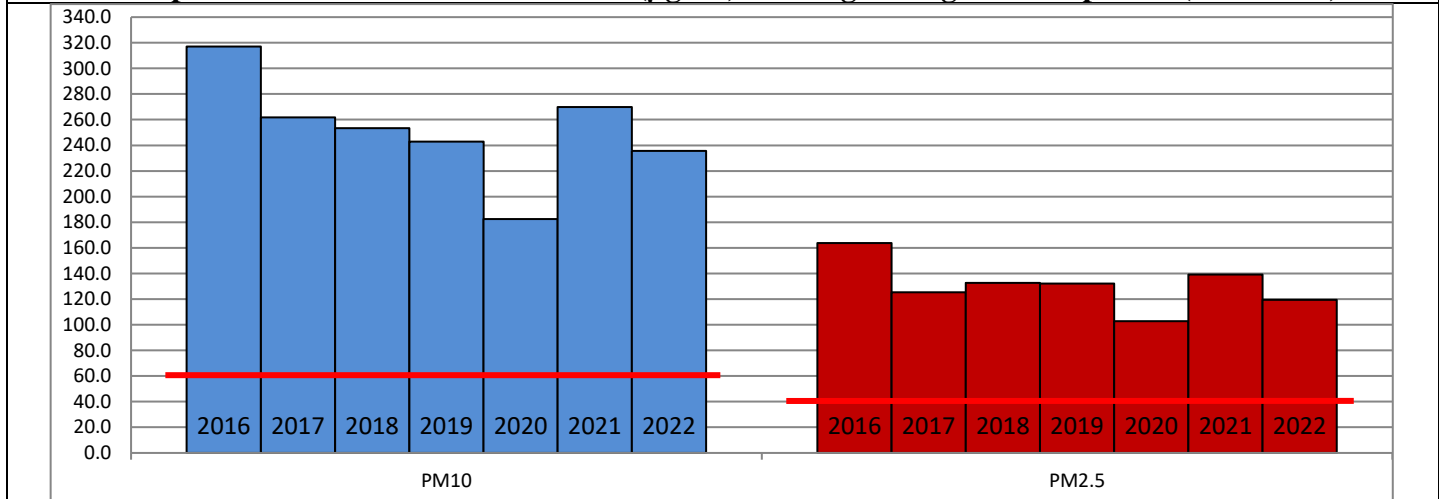
	Air Quality	AQI Value	Prominent Pollutant
Delhi	Poor	229↓	PM <sub>10</sub>
Faridabad	Poor	262↓	PM <sub>2.5</sub> , PM <sub>10</sub> , O <sub>3</sub>
Ghaziabad	Poor	297↑	PM <sub>10</sub>
Greater Noida	Poor	255↓	PM <sub>10</sub>
Gurugram	Moderate	170↓	PM <sub>2.5</sub> , PM <sub>10</sub>
Noida	Poor	263↓	PM <sub>10</sub>

\*Data available for 37 stations in Delhi today. # ↓ ↑ arrows indicate increase/decrease as compared to value on the previous day

#### Comparative status of AQI - Delhi from 01 January to 12 April 2016-2022

Category	Year	2016	2017	2018	2019	2020	2021	2022	2016	2017	2018	2019	2020	2021	2022
	No. of days	99	102	102	102	103	102	102							
Good (0–50)		0	0	0	0	1	0	0							
Satisfactory (51–100)		0	0	1	1	19	0	3	8	25	30	36	51	21	27
Moderate (101–200)		8	25	29	35	31	21	24							
Poor (201–300)		42	52	48	37	35	44	57							
Very Poor (301–400)		43	25	21	22	15	31	17	91	77	72	66	52	81	75
Severe (>401)		6	0	3	7	2	6	1							

#### Comparative status of PM<sub>2.5</sub> and PM<sub>10</sub> (µg/m<sup>3</sup>) running average – Till April 11 (2016-2022)



#### Hotspots for Today:

\*Details given overleaf

Delhi	Mundka, Bawana, Dwarka-Sector-8, Rohini, Major Dhyan Chand National Stadium	Gurugram	Teri Gram, Sector-51
Faridabad	New Industrial Town, Sector-11	Greater Noida	-
Ghaziabad	Loni, Sanjay Nagar	Noida	Sector-125, Sector-116

#### Forecast by IITM:

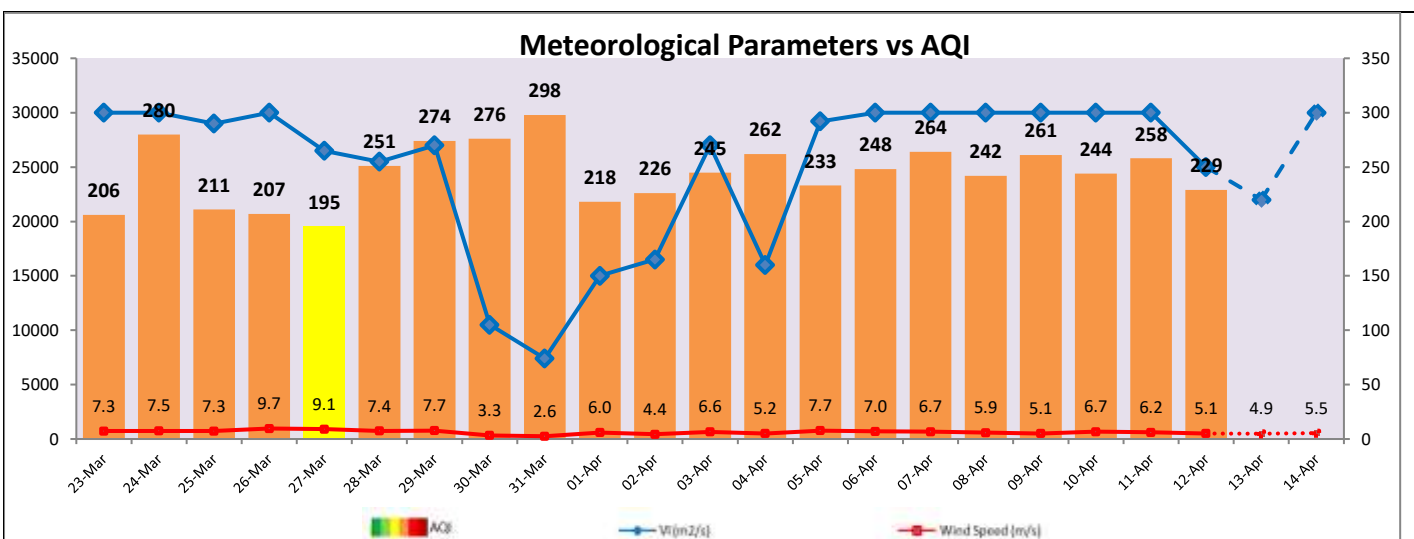
Parameters	April 13, 2022		April 14, 2022- April 15, 2022	
	Concentration	AQI Category	Concentration	AQI Category
PM <sub>10</sub>	243	Moderate	266	Poor
PM <sub>2.5</sub>	92	Poor	101	Poor

## Wind Forecast for Delhi:

	Wind speed (at surface) in km/h		Wind speed (at 900 m) in km/h	Wind Direction	
	As per IMD (at 17:30 hrs.)	As per windy.com (at 16:00 hrs.)	As per windy.com (at 16:00hrs)	As per IMD (at 17:30hrs.)	As per windy.com at 900m
April 13, 2022	22	15	28	NW	W
April 14, 2022	24	15	27	NW	NW
April 15, 2022	22	12	22	NW	NW

### IMD Alert for Tomorrow (13.04.2022):

The air quality is likely to remain in Poor category on 13.04.2022. The predominant surface wind is likely to be coming from West-Northwest direction of Delhi with wind speed 08-22 kmph and partly cloudy sky tomorrow. Ventilation index is likely to be 22,000 m<sup>2</sup> /s tomorrow.



### Hotspots for Today

City	Station Name	AQI value	Air Quality	Prominent Pollutant
Delhi	Mundka, Delhi - DPCC	341	Very Poor	PM <sub>10</sub>
	Bawana, Delhi - DPCC	316	Very Poor	PM <sub>10</sub>
	Dwarka-Sector 8, Delhi - DPCC	314	Very Poor	PM <sub>10</sub>
	Major Dhyan Chand National Stadium, Delhi - DPCC	291	Poor	PM <sub>10</sub>
	Rohini, Delhi - DPCC	288	Poor	PM <sub>10</sub>
Faridabad	New Industrial Town, Faridabad - HSPCB	330	Very Poor	PM <sub>10</sub>
	Sector 11, Faridabad - HSPCB	309	Very Poor	PM <sub>2.5</sub>
Gurugram	Teri Gram, Gurugram - HSPCB	257	Poor	PM <sub>2.5</sub>
	Sector-51, Gurugram - HSPCB	216	Poor	PM <sub>10</sub>
Ghaziabad	Loni, Ghaziabad - UPPCB	421	Severe	PM <sub>10</sub>
	Sanjay Nagar, Ghaziabad - UPPCB	248	Poor	PM <sub>10</sub>
Noida	Sector - 125, Noida - UPPCB	290	Poor	PM <sub>10</sub>
	Sector-116, Noida - UPPCB	273	Poor	PM <sub>10</sub>