



Central Pollution Control Board

Air Quality Status for Delhi &NCR

Dated – February 12, 2022



Current Air Quality Status:

Air Quality Index (AQI) (Average of past 24 hours)

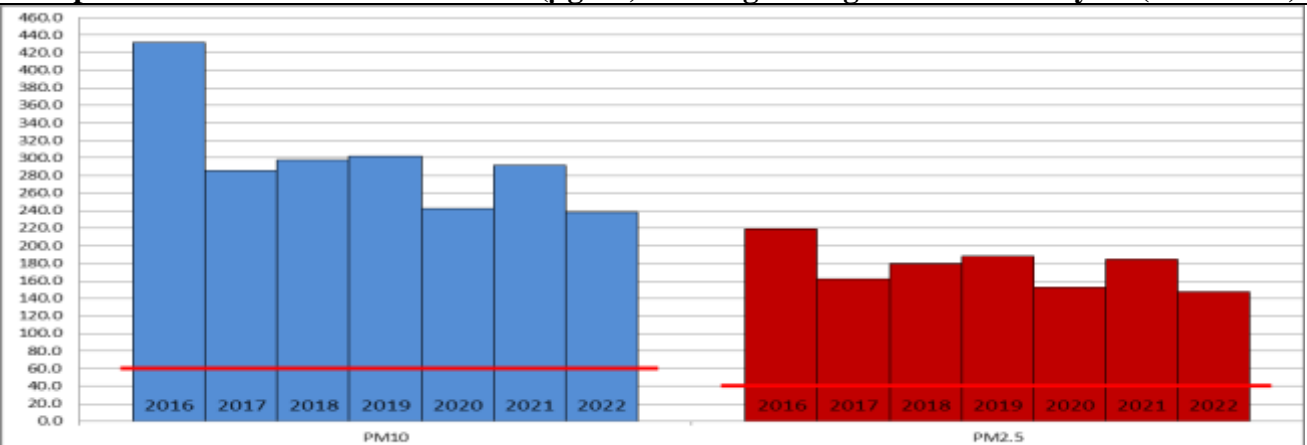
	Air Quality	AQI Value	Prominent Pollutant
Delhi	Moderate	191↑	PM ₁₀ , PM _{2.5}
Faridabad	Moderate	194↑	PM ₁₀ , PM _{2.5}
Ghaziabad	Moderate	178↑	PM ₁₀ , PM _{2.5}
Greater Noida	Moderate	142↑	PM ₁₀
Gurugram	Moderate	166↑	PM ₁₀ , PM _{2.5}
Noida	Moderate	153↑	PM ₁₀ , PM _{2.5}

*Data available for 34 stations in Delhi today. # ↑ ↓ arrows indicate increase/decrease as compared to value on the previous day

Comparative status of AQI - Delhi from 01 January to 12 February 2016-2022

Category	Year	2016	2017	2018	2019	2020	2021	2022	2016	2017	2018	2019	2020	2021	2022
	No. of days	43	43	43	43	43	43	43							
Good (0–50)		0	0	0	0	0	0	0							
Satisfactory (51–100)		0	0	0	0	0	0	2	0	3	1	5	3	4	9
Moderate (101–200)		0	3	1	5	3	4	7							
Poor (201–300)		6	16	18	12	23	11	17							
Very Poor (301–400)		31	24	21	19	15	22	16	43	40	42	38	40	39	34
Severe (>401)		6	0	3	7	2	6	1							

Comparative status of PM_{2.5} and PM₁₀ (µg/m³) running average – Till February 10 (2016-2022)



Hotspots for Today:

*Details given overleaf

Delhi	Anand Vihar, Nehru Nagar, Jahangirpuri, NSIT Dwarka, Lodhi Road	Gurugram	Teri Gram, Sector-51
Faridabad	Sector-11, New Industrial Town	Greater Noida	Knowledge Park – III
Ghaziabad	Sanjay Nagar, Loni	Noida	Sector -62, Sector - 125

Forecast by IITM:

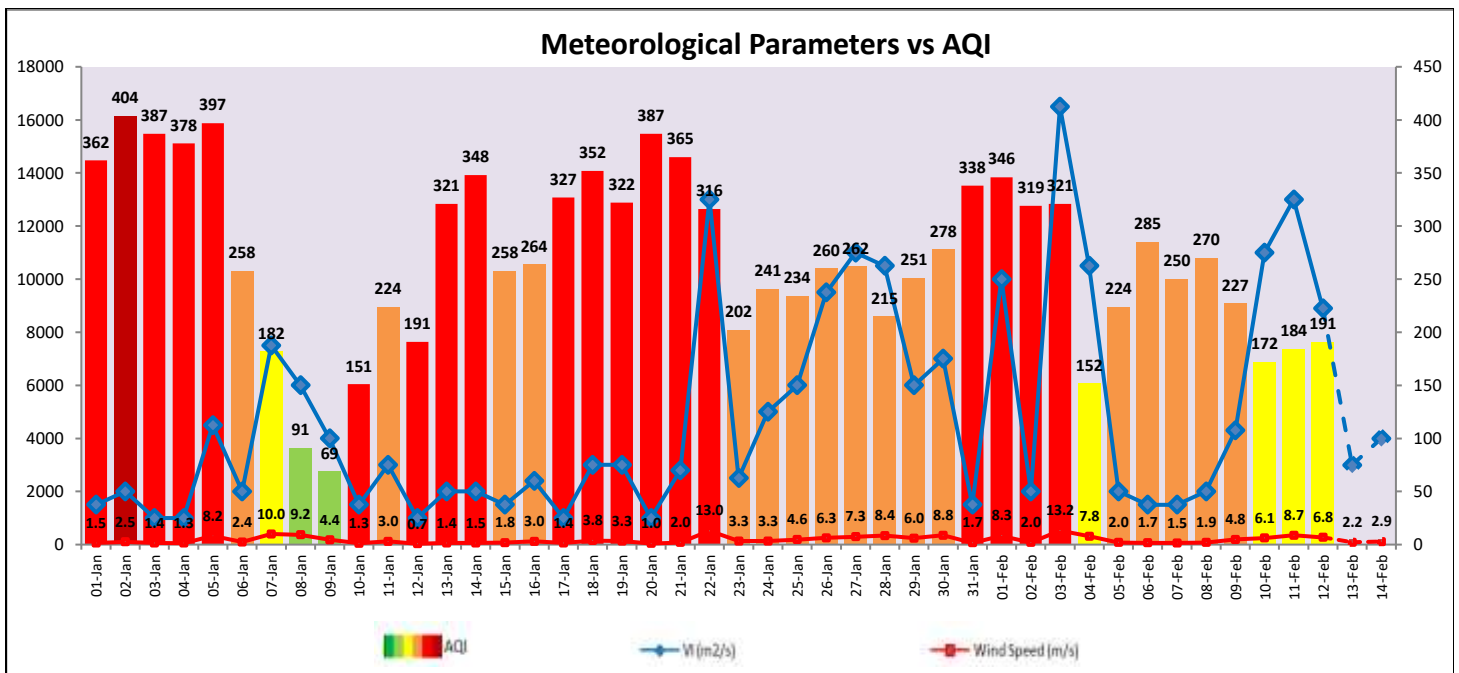
Parameters	February 13, 2022		February 14, 2022- February 15, 2022	
	Concentration	AQI Category	Concentration	AQI Category
PM ₁₀	205	Moderate	239	x
PM _{2.5}	94	Poor	109	Poor

▪ **Wind Forecast for Delhi:**

	Wind speed (at surface) in km/h		Wind speed (at 900 m) in km/h	Wind Direction	
	As per IMD (at 17:30 hrs.)	As per windy.com (at 16:00 hrs.)	As per windy.com (at 16:00hrs)	As per IMD (at 17:30hrs.)	As per windy.com at 900m
February 13, 2022	04	03	06	NE	W
February 14 2022	04	06	11	NE	NW
February 15, 2022	08	05	10	N	NW

▪ **IMD Alert for Tomorrow (13.02.2022):**

The air quality is likely to remain in Poor category on 13.02.2022 and 14.02.2022 owing to poor ventilation conditions. The predominant surface wind is likely to be coming from variable direction of Delhi with wind speed 04-08 kmph, mainly clear sky and moderate to dense fog in the morning tomorrow. The ventilation index is likely to be 3,000 m²/s.



▪ **Hotspots for Today**

City	Station Name	AQI value	Air Quality	Prominent Pollutant
Delhi	NSIT Dwarka, Delhi - CPCB	330	Very Poor	PM _{2.5}
	Anand Vihar, Delhi - DPCC	317	Very Poor	PM ₁₀
	Lodhi Road, Delhi - IITM	270	Poor	PM _{2.5}
	Jahangirpuri, Delhi - DPCC	263	Poor	PM _{2.5}
	Nehru Nagar, Delhi - DPCC	254	Poor	PM _{2.5}
Faridabad	Sector 11, Faridabad - HSPCB	255	Poor	PM _{2.5}
	New Industrial Town, Faridabad - HSPCB	195	Moderate	PM ₁₀
Gurugram	Teri Gram, Gurugram - HSPCB	233	Poor	PM _{2.5}
	Sector-51, Gurugram - HSPC	181	Moderate	PM _{2.5}
Ghaziabad	Loni, Ghaziabad - UPPCB	252	Poor	PM _{2.5}
	Sanjay Nagar, Ghaziabad - UPPCB	166	Moderate	PM ₁₀
Greater Noida	Knowledge Park - III, Greater Noida - UPPCB	152	Moderate	PM ₁₀
Noida	Sector - 125, Noida - UPPCB	178	Moderate	PM _{2.5}
	Sector - 62, Noida - IMD	159	Moderate	PM ₁₀