



Central Pollution Control Board

Air Quality Status for Delhi & NCR

Dated – January 12, 2024



Current Air Quality Status:

Air Quality Index (AQI) (Average of past 24 hours at 4 PM) in comparison with last two years

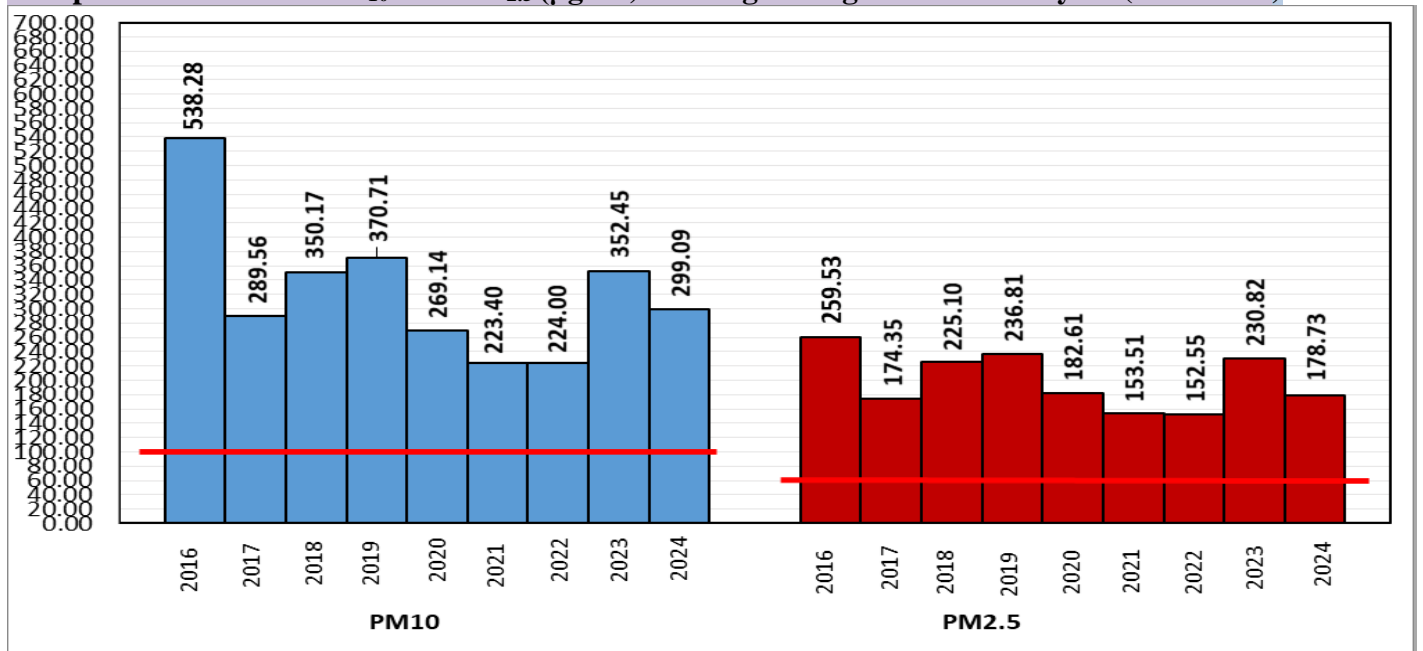
	2024			2023			2022		
	Air Quality	AQI Value	Prominent Pollutant	Air Quality	AQI Value	Prominent Pollutant	Air Quality	AQI Value	Prominent Pollutant
Delhi	Very Poor	340↓	PM2.5	Very Poor	371↑	PM2.5	Moderate	191↓	PM2.5
Faridabad	Poor	263↑	PM2.5	Very Poor	341↑	PM2.5	Moderate	196	PM2.5
Ghaziabad	Very Poor	309↑	PM2.5	Very Poor	311↑	PM2.5	Moderate	194↑	PM2.5
Greater Noida	Very Poor	322	PM2.5	Very Poor	308↑	PM2.5	Moderate	179↓	PM2.5
Gurugram	Poor	237↑	PM2.5	Very Poor	317↑	PM2.5	Moderate	138↓	PM2.5
Noida	Poor	298↓	PM2.5	Very Poor	322↑	PM2.5	Moderate	152↓	PM2.5, PM10

*Data available for 32(2024), 38(2023), 33(2022) stations in Delhi today. # ↑, ↓ arrows indicate a decrease/increase as compared to the value on the previous day.

Comparative status of AQI - Delhi from 01 January to 12 January 2016-2024

Category	Year	2016	2017	2018	2019	2020	2021	2022	2023	2024	2016	2017	2018	2019	2020	2021	2022	2023	2024	
	No. of days	12	12	12	12	12	12	12	12	12	2016	2017	2018	2019	2020	2021	2022	2023	2024	
Good (0–50)		0	0	0	0	0	0	0	0	0	0	0	0	0	0	0	0	0	0	0
Satisfactory (51–100)		0	0	0	0	0	0	2	0	0	0	0	0	0	2	5	0	0	0	0
Moderate (101–200)		0	0	0	0	0	2	3	0	0	0	0	0	0	0	0	0	0	0	0
Poor (201–300)		0	4	2	2	5	5	2	1	1	12	12	12	12	12	10	7	12	12	12
Very Poor (301–400)		9	8	8	6	5	3	4	9	11	12	12	12	12	10	7	12	12	12	12
Severe (>401)		3	0	2	4	2	2	1	2	0	0	0	0	0	0	0	0	0	0	0

Comparative status of PM₁₀ and PM_{2.5} (µg/m³) running average – Till January 11 (2016-2024)



*Red line shows the annual average concentration standards for PM₁₀ and PM_{2.5}.

Daily Average of Particulates in Delhi (24 hourly average value; from 06:00am of 11.01.24 to 06:00 am of 12.01.24)

Date ↓ / parameter →	PM _{2.5} (µg/m ³)	PM ₁₀ (µg/m ³)
11-January -2024	191↑	310↑

Hotspots for Today:

*Details given below

Delhi	Jahangirpuri, Anand Vihar, Nehru Nagar, Pusa, Vivek Vihar	Ghaziabad	Sanjay Nagar, Vasundhara
Faridabad	Sector- 16A, New Industrial Town	Greater Noida	Knowledge Park -V
Gurugram	Sector-51, Teri Gram	Noida	Sector-116, Sector-1

Forecast by IITM(Delhi):

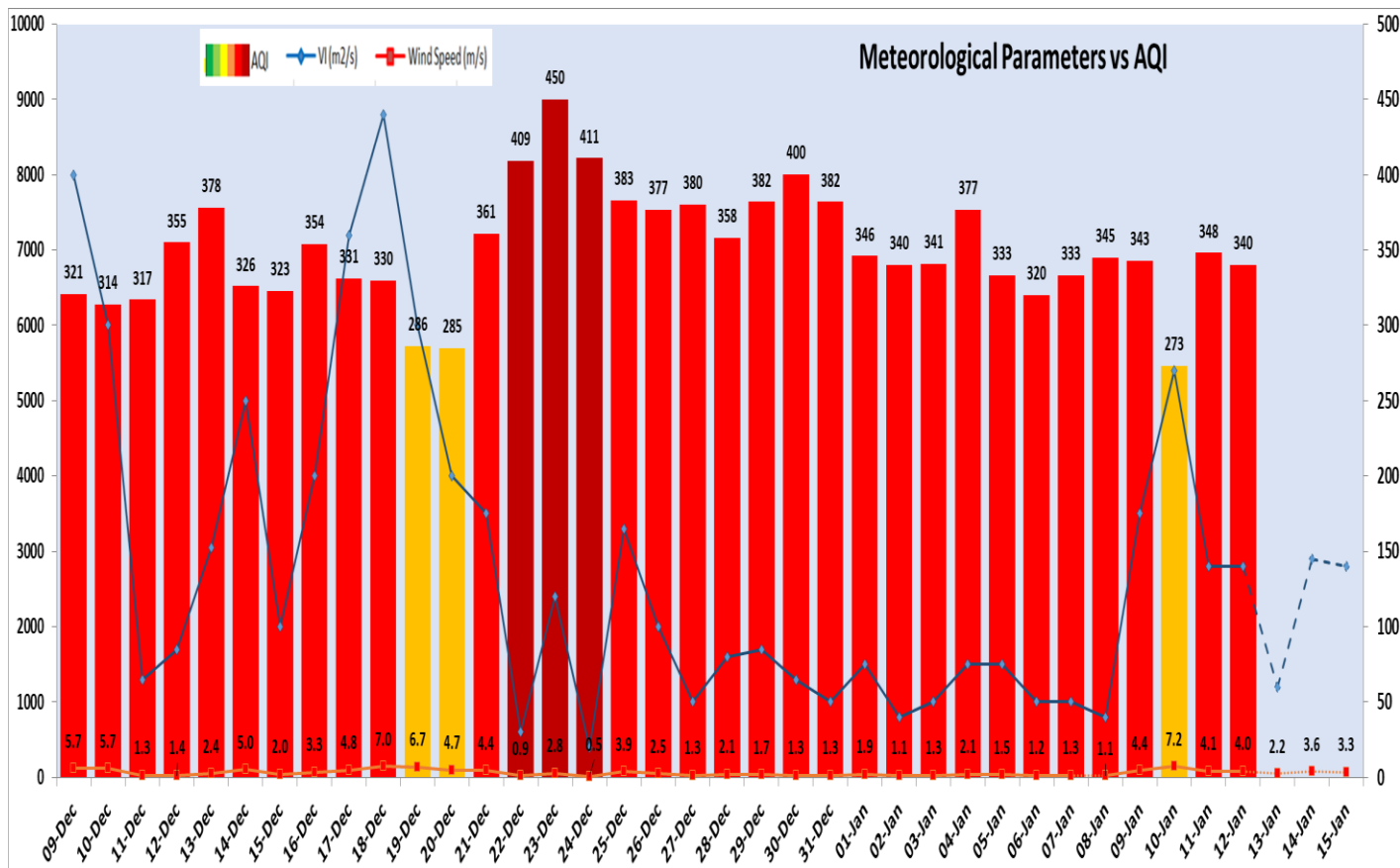
	Jan 13, 2024	Jan 14, 2024	Jan 15, 2024
AQI Category	Very Poor	Very Poor	Very Poor

Wind Forecast for Delhi:

	Wind speed (at surface) in km/h		Wind speed (at 900 m) in km/h	Wind Direction	
	As per IMD (range)	As per windy.com (at 16:00 hrs.)	As per windy.com (at 16:00hrs)	As per IMD	As per windy.com at 900m
Jan 13. 2024	04-06	07	14	NW	NW
Jan 14. 2024	04-08	08	19	NW	NW
Jan 15. 2024	04-10	09	17	NW	NW

IMD Alert for Tomorrow (13.01.2024):

The air quality is likely to remain in Very Poor category from 13.01.2024 to 15.01.2024. The predominant surface wind is likely to be coming from Northwest directions in Delhi with wind speed 04-06 mph, partly cloudy sky with dense fog in the morning on 13.01.2024. Ventilation index is likely to be 1200m²/s.



Delhi Temperature in (°C)		
Date	Minimum	Maximum
09-01-2024	7.9	17.5
10-01-2024	7.1	13.4
11-01-2024	5.8	15.2
12-01-2024	3.9	18.1

▪ **Hotspots for Today**

City	Station Name	AQI value	Air Quality	Prominent Pollutant
Delhi	Jahangirpuri, Delhi - DPCC	391	Very Poor	PM _{2.5}
	Anand Vihar, Delhi - DPCC	388	Very Poor	PM _{2.5}
	Nehru Nagar, Delhi - DPCC	387	Very Poor	PM _{2.5}
	Pusa, Delhi - DPCC	381	Very Poor	PM _{2.5}
	Vivek Vihar, Delhi - DPCC	380	Very Poor	PM _{2.5}
Faridabad	Sector- 16A, Faridabad - HSPCB	334	Very Poor	PM _{2.5}
	New Industrial Town, Faridabad - HSPCB	327	Very Poor	PM _{2.5}
Gurugram	Sector-51, Gurugram - HSPCB	307	Very Poor	PM _{2.5}
	Teri Gram, Gurugram - HSPCB	264	Poor	PM _{2.5}
Ghaziabad	Sanjay Nagar, Ghaziabad - UPPCB	330	Very Poor	PM _{2.5}
	Vasundhara, Ghaziabad - UPPCB	319	Very Poor	PM _{2.5}
Greater Noida	Knowledge Park - V, Greater Noida - UPPCB	340	Very Poor	PM _{2.5}
Noida	Sector-116, Noida - UPPCB	330	Very Poor	PM _{2.5}
	Sector-1, Noida - UPPCB	322	Very Poor	PM _{2.5}