



Central Pollution Control Board

Air Quality Status for Delhi & NCR

Dated – January 12, 2023



Current Air Quality Status:

Air Quality Index (AQI) (Average of past 24 hours)

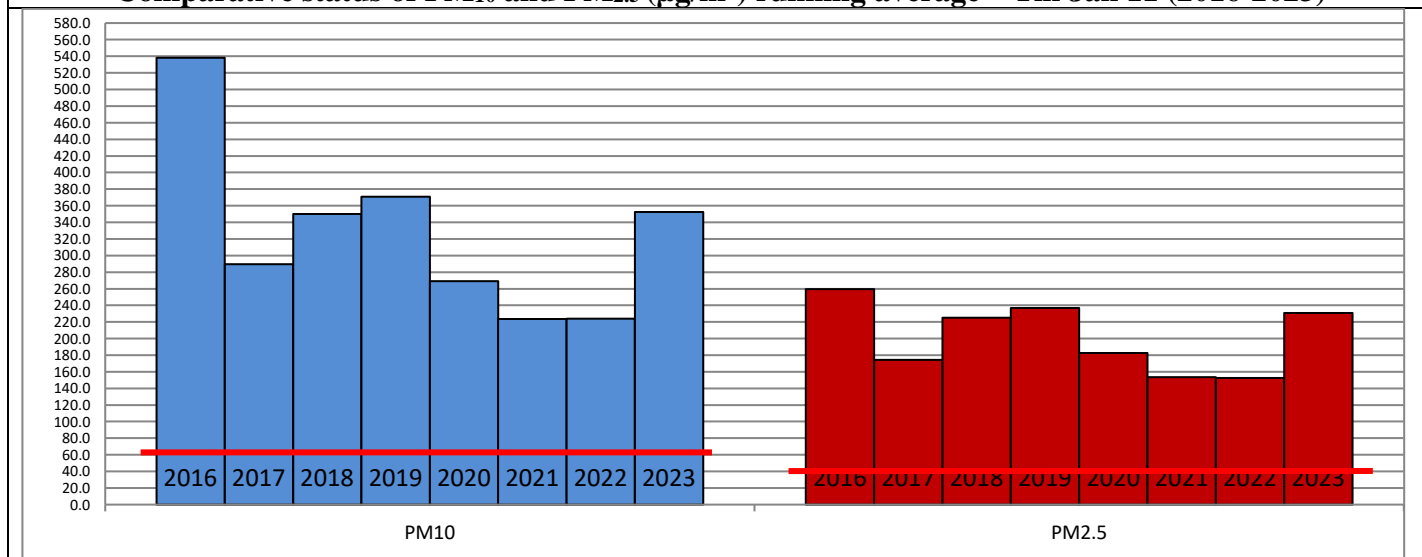
	Air Quality	AQI Value	Prominent Pollutant
Delhi	Very Poor	371 ↓	PM _{2.5}
Faridabad	Very Poor	341 ↓	PM _{2.5}
Ghaziabad	Very Poor	311 ↓	PM _{2.5}
Greater Noida	Very Poor	308 ↓	PM _{2.5}
Gurugram	Very Poor	317 ↓	PM _{2.5}
Noida	Very Poor	322 ↓	PM _{2.5}

*Data available for 38 stations in Delhi today. # ↓ ↑ arrows indicate a decrease/increase as compared to the value on the previous day.

Comparative status of AQI - Delhi from 01 January to 12 January 2016-2023

Category	Year	2016	2017	2018	2019	2020	2021	2022	2023	2016	2017	2018	2019	2020	2021	2022	2023
	No. of days	12	12	12	12	12	12	12	12								
Good (0-50)		0	0	0	0	0	0	0	0	0	0	0	0	0	0	0	0
Satisfactory (51-100)		0	0	0	0	0	0	2	0	0	0	0	0	0	2	5	0
Moderate (101-200)		0	0	0	0	0	2	3	0								
Poor (201-300)		0	4	2	2	5	6	2	1								
Very Poor (301-400)		9	8	8	6	5	2	4	9	12	12	12	12	12	10	7	12
Severe (>401)		3	0	2	4	2	2	1	2								

Comparative status of PM₁₀ and PM_{2.5} (µg/m³) running average – Till Jan 11 (2016-2023)



Hotspots for Today:

*Details given overleaf

Delhi	ITO, Rohini, Sonia Vihar, Wazirpur, Mundka	Ghaziabad	Vasundhara, Loni
Faridabad	Sector-16A, Sector-30	Greater Noida	Knowledge Park - III
Gurugram	NISE Gwal Pahari, Teri Gram	Noida	Sector-62, Sector-116

Forecast by IITM (Delhi):

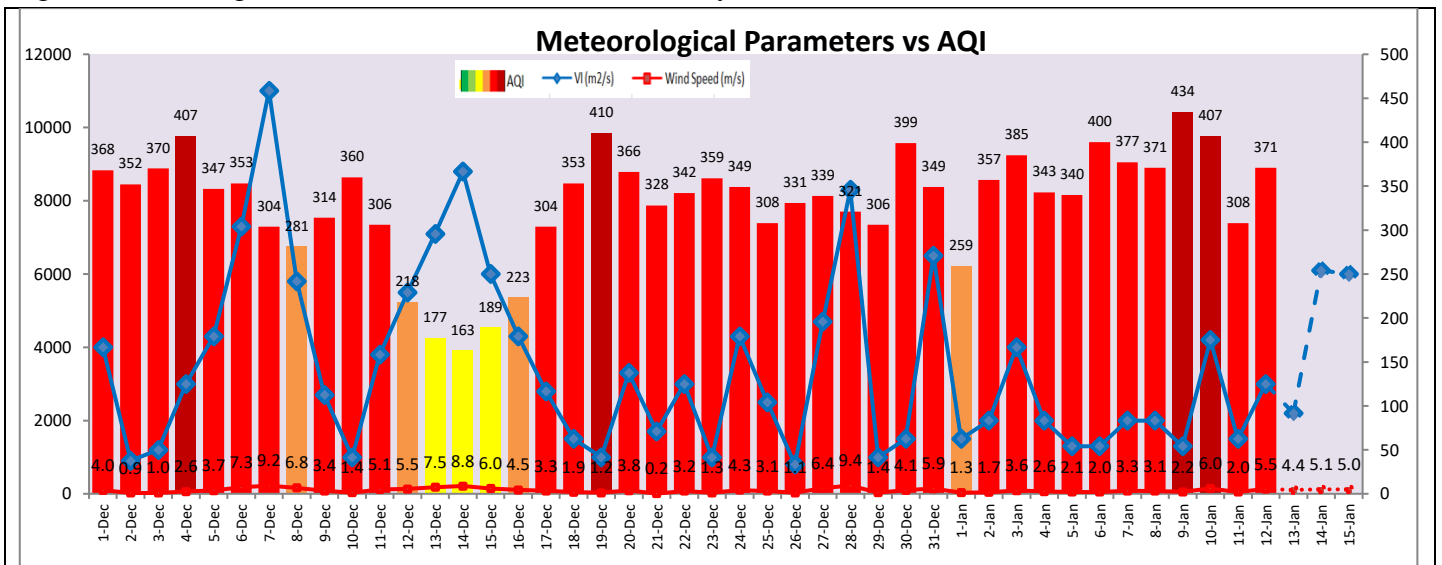
	Jan 13, 2023		Jan 14, 2023- Jan 15, 2023	
	Concentration	AQI Category	Concentration	AQI Category
PM ₁₀	258	Poor	283	Poor
PM _{2.5}	160	Very Poor	175	Very Poor

Wind Forecast for Delhi:

	Wind speed (at surface) in km/h		Wind speed (at 900 m) in km/h	Wind Direction	
	As per IMD (range)	As per windy.com (at 16:00 hrs.)	As per windy.com (at 16:00hrs)	As per IMD	As per windy.com at 900m
Jan 13, 2023	08-12	05	14	SE	NW
Jan 14, 2023	12-16	09	25	NW	NW
Jan 15, 2023	08-12	08	28	NW	NW

IMD Alert for Tomorrow (13.01.2023):

The air quality is likely to remain in Very Poor category on 13.01.2023. The predominant surface wind is likely to be coming from Southeast direction in Delhi with wind speed 08-12 kmph, partly cloudy sky and moderate fog in the morning tomorrow. Ventilation index is likely to be 2,200 m²/s.



Hotspots for Today

City	Station Name	AQI value	Air Quality	Prominent Pollutant
Delhi	ITO, Delhi - CPCB	435	Severe	PM _{2.5}
	Rohini, Delhi - DPCC	419	Severe	PM _{2.5}
	Sonia Vihar, Delhi - DPCC	414	Severe	PM _{2.5}
	Wazirpur, Delhi - DPCC	412	Severe	PM _{2.5}
	Mundka, Delhi - DPCC	402	Severe	PM _{2.5}
Faridabad	Sector 30, Faridabad - HSPCB	361	Very Poor	PM _{2.5}
	Sector- 16A, Faridabad - HSPCB	347	Very Poor	PM _{2.5}
Gurugram	NISE Gwal Pahari, Gurugram - IMD	333	Very Poor	PM _{2.5}
	Teri Gram, Gurugram - HSPCB	327	Very Poor	PM _{2.5}
Ghaziabad	Vasundhara, Ghaziabad - UPPCB	334	Very Poor	PM _{2.5}
	Loni, Ghaziabad - UPPCB	322	Very Poor	PM _{2.5}
Greater Noida	Knowledge Park - III, Greater Noida - UPPCB	340	Very Poor	PM _{2.5}
Noida	Sector - 62, Noida - IMD	352	Very Poor	PM _{2.5}
	Sector-116, Noida - UPPCB	323	Very Poor	PM _{2.5}