



# Central Pollution Control Board

Air Quality Status for Delhi & NCR

Dated – January 12, 2022



## Current Air Quality Status:

### Air Quality Index (AQI) (Average of past 24 hours)

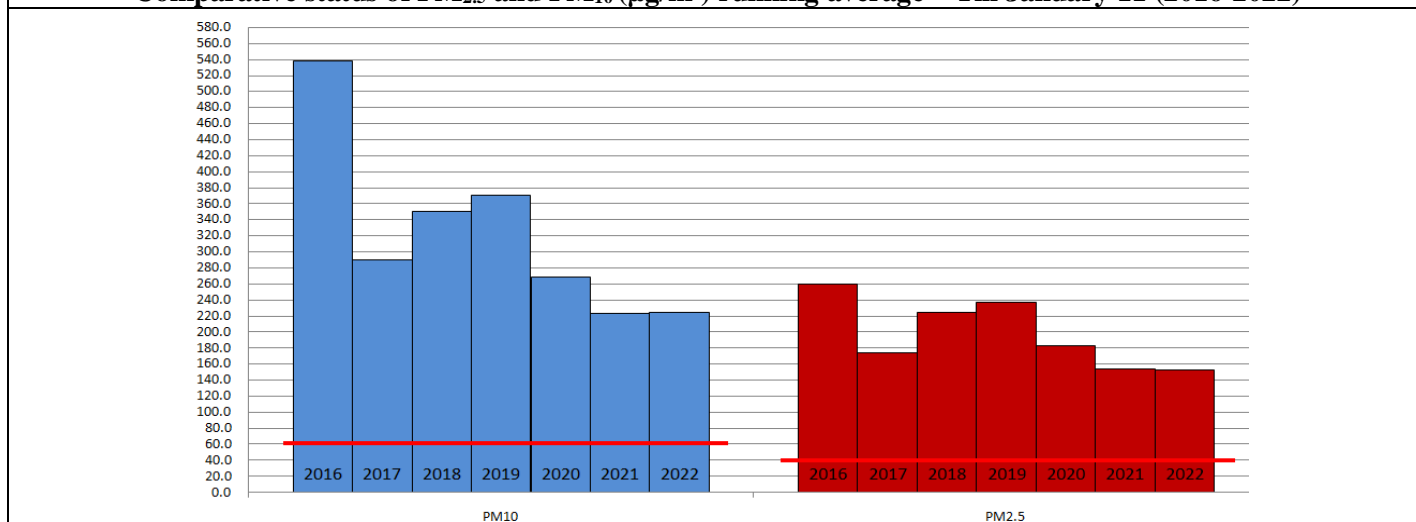
	Air Quality	AQI Value	Prominent Pollutant
Delhi	Moderate	191 ↓	PM <sub>2.5</sub>
Faridabad	Moderate	196	PM <sub>2.5</sub>
Ghaziabad	Moderate	194 ↑	PM <sub>2.5</sub>
Greater Noida	Moderate	179 ↓	PM <sub>2.5</sub>
Gurugram	Moderate	138 ↓	PM <sub>2.5</sub>
Noida	Moderate	152 ↓	PM <sub>2.5</sub> , PM <sub>10</sub>

\*Data available for 33 stations in Delhi today. # ↓, ↑ arrows indicate increase/decrease as compared to value on the previous day

### Comparative status of AQI - Delhi from 01 January to 12 January 2016-2022

Category	Year	2016	2017	2018	2019	2020	2021	2022	2016	2017	2018	2019	2020	2021	2022
		No. of days	12	12	12	12	12	12	12						
Good (0–50)		0	0	0	0	0	0	0							
Satisfactory (51–100)		0	0	0	0	0	0	2	0	0	0	0	0	2	5
Moderate (101–200)		0	0	0	0	0	2	3							
Poor (201–300)		0	4	2	2	5	6	2							
Very Poor (301–400)		9	8	8	6	5	2	4	12	12	12	12	12	10	7
Severe (>401)		3	0	2	4	2	2	1							

### Comparative status of PM<sub>2.5</sub> and PM<sub>10</sub> (µg/m<sup>3</sup>) running average – Till January 11 (2016-2022)



### Hotspots for Today:

\*Details given overleaf

Delhi	Jahangirpuri, Anand Vihar, Pusa, Nehru Nagar, Mundka	Gurugram	NISE Gwal Pahari, Sector-51
Faridabad	Sector-16A, Sector-11	Greater Noida	Knowledge Park – V
Ghaziabad	Indirapuram, Loni	Noida	Sector -62, Sector - 1

### Forecast by IITM:

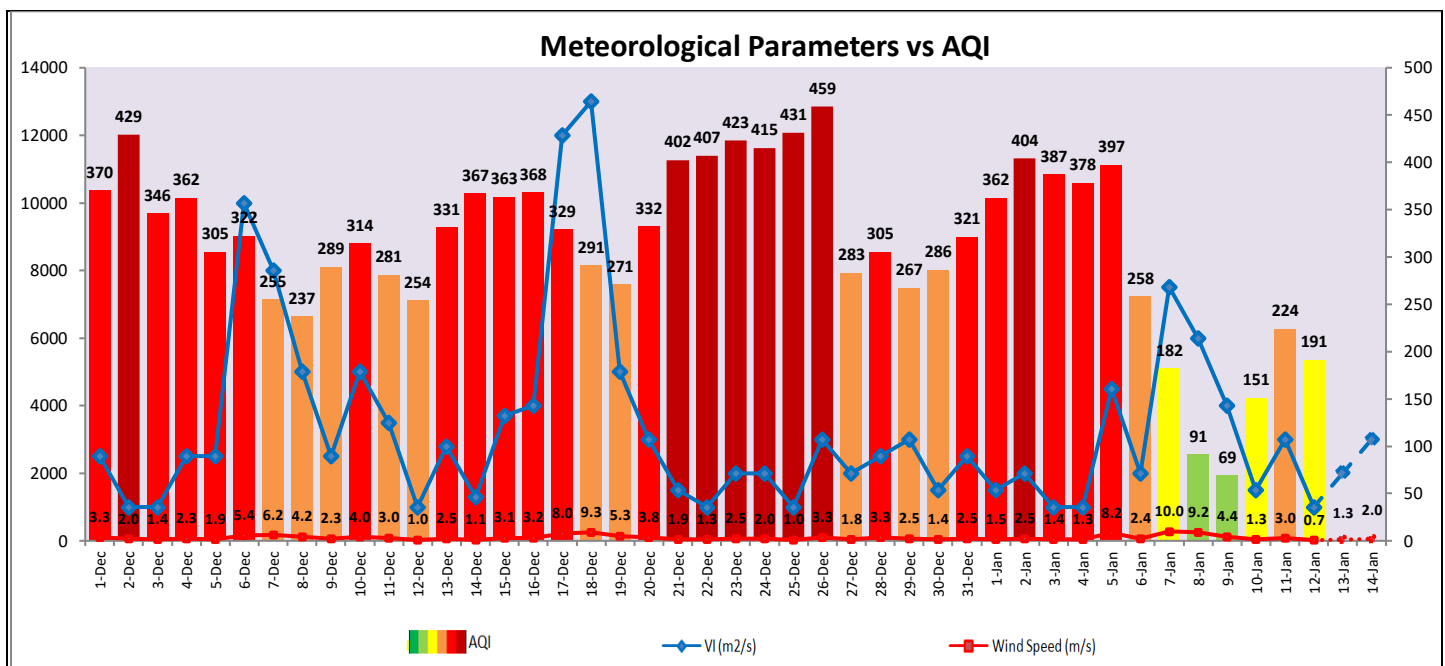
Parameters	January 13, 2022		January 14, 2022-January 15, 2022	
	Concentration	AQI Category	Concentration	AQI Category
PM <sub>10</sub>	155	Moderate	179	Moderate
PM <sub>2.5</sub>	95	Poor	110	Poor

▪ **Wind Forecast for Delhi:**

	Wind speed (at surface) in km/h		Wind speed (at 900 m) in km/h	Wind Direction	
	As per IMD (at 17:30 hrs.)	As per windy.com (at 16:00 hrs.)	As per windy.com (at 16:00hrs)	As per IMD (at 17:30hrs.)	As per windy.com at 900m
January 13, 2022	05	02	03	NW	E
January 14, 2022	05	06	11	NNW	NW
January 15, 2022	05	08	17	NNW	N

▪ **IMD Alert for Tomorrow (13.01.2022):**

The air quality is likely to remain in Moderate to Poor category on 13.01.2022 and lower end of Very Poor category on 14.01.2022. The predominant surface wind is likely to be coming from Northwest direction of Delhi with wind speed 05-08 kmph, mainly clear sky and moderate fog in the morning. Ventilation index is likely to be 2,000 m<sup>2</sup>/s.



▪ **Hotspots for Today**

City	Station Name	AQI value	Air Quality	Prominent Pollutant
Delhi	Jahangirpuri, Delhi - DPCC	319	Very Poor	PM <sub>2.5</sub>
	Anand Vihar, Delhi - DPCC	288	Poor	PM <sub>2.5</sub>
	Nehru Nagar, Delhi - DPCC	280	Poor	PM <sub>2.5</sub>
	Pusa, Delhi - DPCC	259	Poor	PM <sub>2.5</sub>
	Mundka, Delhi - DPCC	250	Poor	PM <sub>2.5</sub>
Faridabad	Sector 11, Faridabad - HSPCB	213	Poor	PM <sub>2.5</sub>
	Sector- 16A, Faridabad - HSPCB	195	Moderate	PM <sub>2.5</sub>
Gurugram	Sector-51, Gurugram - HSPCB	208	Poor	PM <sub>2.5</sub>
	NISE Gwal Pahari, Gurugram - IMD	104	Moderate	PM <sub>2.5</sub>
Ghaziabad	Loni, Ghaziabad - UPPCB	266	Poor	PM <sub>2.5</sub>
	Indirapuram, Ghaziabad - UPPCB	178	Moderate	PM <sub>2.5</sub>
Greater Noida	Knowledge Park - V, Greater Noida - UPPCB	177	Moderate	PM <sub>2.5</sub>
Noida	Sector-1, Noida - UPPCB	190	Moderate	PM <sub>2.5</sub>
	Sector - 62, Noida - IMD	138	Moderate	PM <sub>10</sub>