



Central Pollution Control Board

Air Quality Status for Delhi & NCR

Dated – December 11, 2022



Current Air Quality Status:

Air Quality Index (AQI) (Average of past 24 hours)

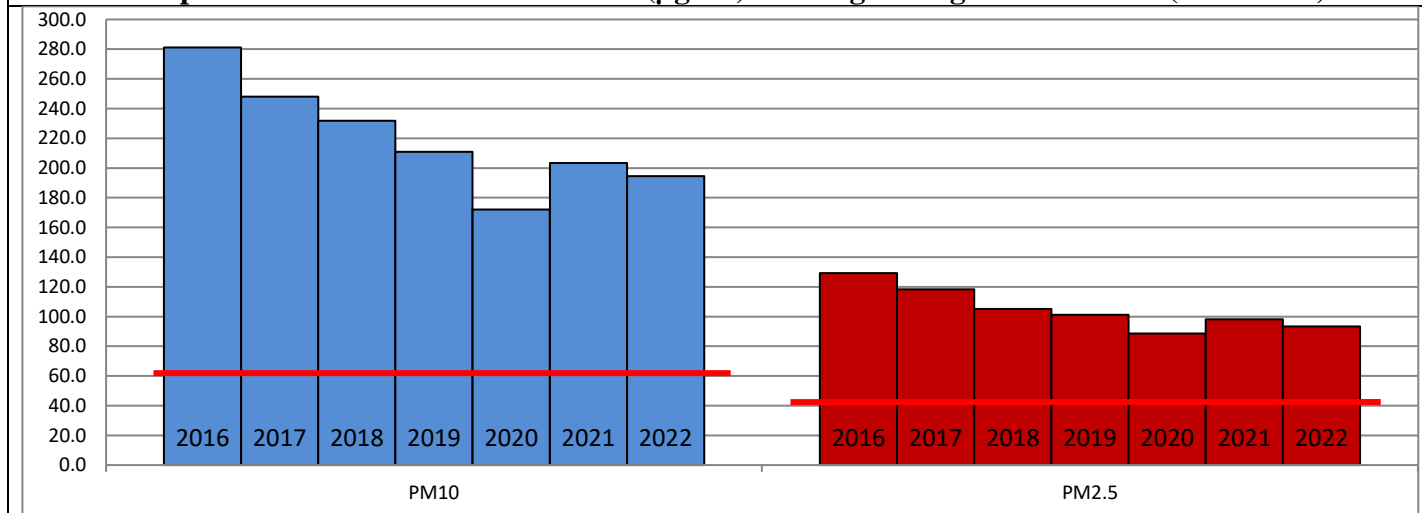
	Air Quality	AQI Value	Prominent Pollutant
Delhi	Very Poor	306 ↓	PM _{2.5}
Faridabad	Poor	275 ↓	PM _{2.5}
Ghaziabad	Poor	270 ↓	PM _{2.5}
Greater Noida	Very Poor	306 ↓	PM _{2.5}
Gurugram	Poor	204 ↓	PM _{2.5}
Noida	Poor	268 ↓	PM _{2.5}

*Data available for 36 stations in Delhi today. # ↓ ↑ arrows indicate a decrease/increase as compared to the value on the previous day.

Comparative status of AQI - Delhi from 01 January to 11 December 2016-2022

Category	Year	2016	2017	2018	2019	2020	2021	2022	2016	2017	2018	2019	2020	2021	2022
	No. of days	334	345	345	345	346	345	345							
Good (0–50)		0	2	0	2	5	1	3							
Satisfactory (51–100)		24	45	53	59	95	81	65	110	151	158	179	226	197	160
Moderate (101–200)		86	104	105	118	126	115	92							
Poor (201–300)		119	107	111	100	67	74	128							
Very Poor (301–400)		83	79	62	48	41	56	52	224	194	187	166	120	148	185
Severe (>401)		22	8	14	18	12	18	5							

Comparative status of PM₁₀ and PM_{2.5} (µg/m³) running average – Till Dec 07 (2016-2022)



Hotspots for Today:

*Details given overleaf

Delhi	Nehru Nagar, NSIT Dwarka, Jahangirpuri, Vivek Vihar, Patparganj	Ghaziabad	Vasundhara, Loni
Faridabad	Sector-16A	Greater Noida	Knowledge Park-III
Gurugram	Sector-51, Vikas Sadan	Noida	Sector – 62, Sector-116

Forecast by IITM (Delhi):

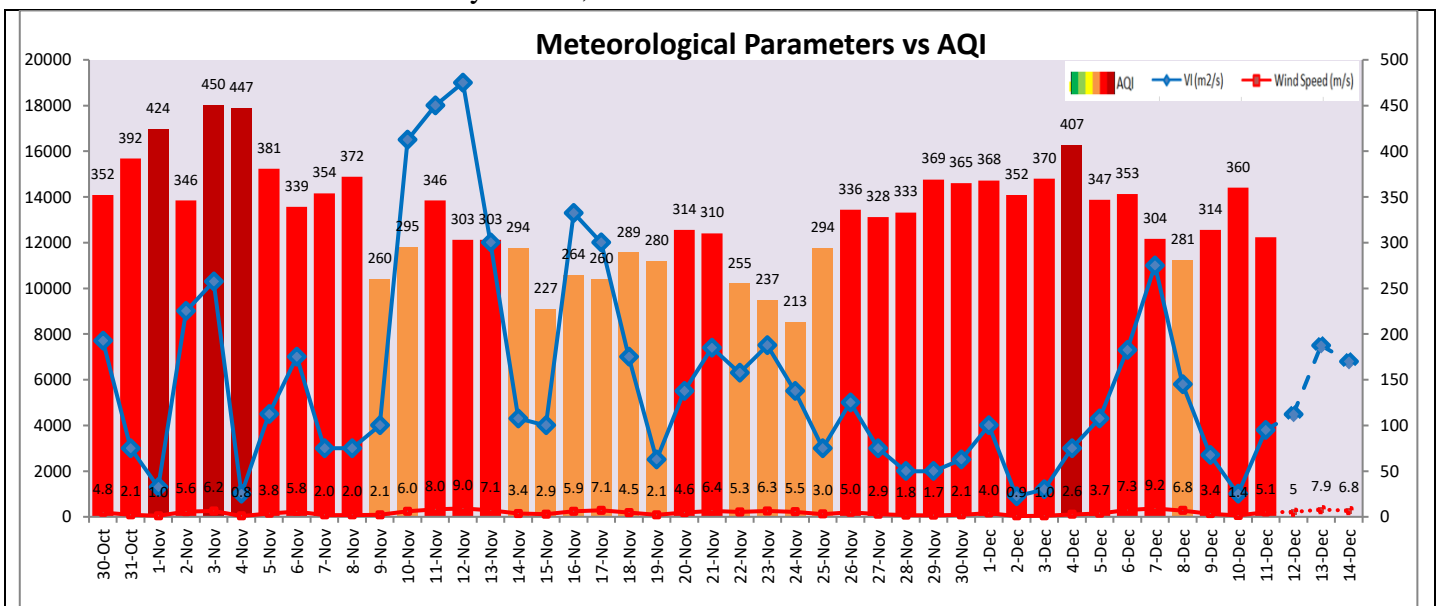
	Dec 12, 2022		Dec 13, 2022- Dec 14, 2022	
	Concentration	AQI Category	Concentration	AQI Category
PM ₁₀	164	Moderate	179	Moderate
PM _{2.5}	82	Moderate	92	Poor

Wind Forecast for Delhi:

	Wind speed (at surface) in km/h		Wind speed (at 900 m) in km/h	Wind Direction	
	As per IMD (range)	As per windy.com (at 16:00 hrs.)	As per windy.com (at 16:00hrs)	As per IMD	As per windy.com at 900m
Dec 12, 2022	08-12	10	27	NW	NW
Dec 13, 2022	12-16	13	46	NW	NW
Dec 14, 2022	14-16	09	31	NW	NW

IMD Alert for Tomorrow (12.12.2022):

The air quality is likely to improve further owing to relatively strong winds and better ventilation conditions and reach in Poor category on 12.12.2022. The predominant surface wind is likely to be coming from Northwest directions in Delhi with wind speed 08-12 kmph, mainly clear sky and mist/shallow fog in the morning tomorrow. Ventilation index is likely to be 4,500 m²/s.



Hotspots for Today

City	Station Name	AQI value	Air Quality	Prominent Pollutant
Delhi	Nehru Nagar, Delhi - DPCC	374	Very Poor	PM _{2.5}
	NSIT Dwarka, Delhi - CPCB	367	Very Poor	PM _{2.5}
	Jahangirpuri, Delhi - DPCC	355	Very Poor	PM _{2.5}
	Vivek Vihar, Delhi - DPCC	353	Very Poor	PM _{2.5}
	Patparganj, Delhi - DPCC	352	Very Poor	PM _{2.5}
Faridabad	Sector- 16A, Faridabad - HSPCB	324	Very Poor	PM _{2.5}
Gurugram	Vikas Sadan, Gurugram - HSPCB	241	Poor	PM _{2.5}
	Sector-51, Gurugram - HSPCB	218	Poor	PM _{2.5}
Ghaziabad	Vasundhara, Ghaziabad - UPPCB	340	Very Poor	PM _{2.5}
	Loni, Ghaziabad - UPPCB	281	Poor	PM _{2.5}
Greater Noida	Knowledge Park - III, Greater Noida - UPPCB	342	Very Poor	PM _{2.5}
Noida	Sector - 62, Noida - IMD	315	Very Poor	PM _{2.5}
	Sector-116, Noida - UPPCB	291	Poor	PM _{2.5}