



# Central Pollution Control Board

## Air Quality Status for Delhi &NCR

Dated – November 11, 2021



### Current Air Quality Status:

#### Air Quality Index (AQI) (Average of past 24 hours)

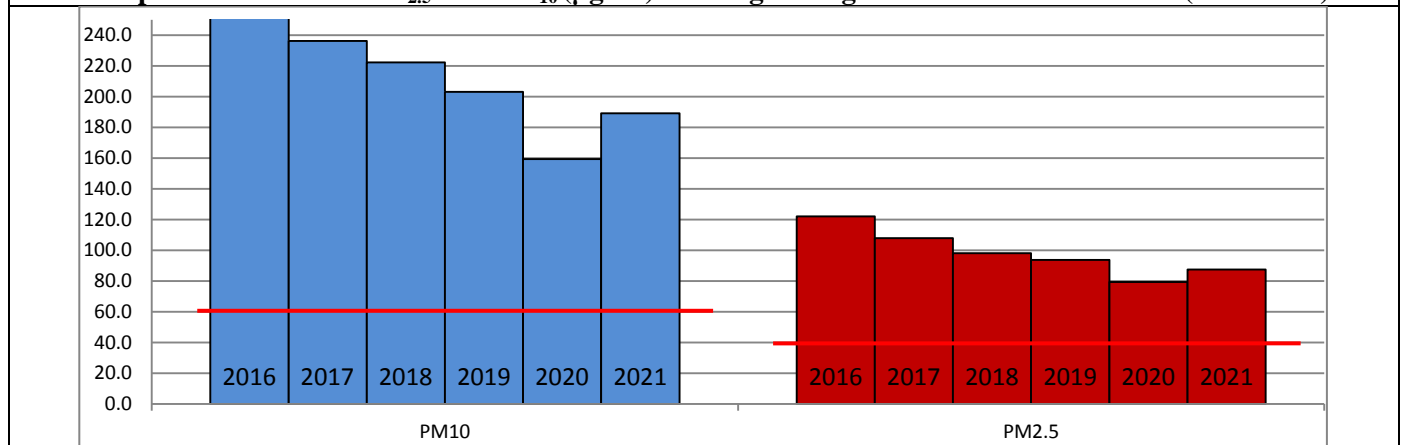
	Air Quality	AQI Value	Prominent Pollutant
Delhi	Severe	411 ↑	PM <sub>10</sub> , PM <sub>2.5</sub>
Faridabad	Severe	412 ↑	PM <sub>10</sub> , PM <sub>2.5</sub>
Ghaziabad	Severe	461 ↑	PM <sub>2.5</sub>
Greater Noida	Severe	417 ↑	PM <sub>10</sub> , PM <sub>2.5</sub>
Gurugram	Very Poor	378 ↑	PM <sub>2.5</sub>
Noida	Severe	434 ↑	PM <sub>2.5</sub>

\*Data available for 36 stations in Delhi today. # ↓, ↑ arrows indicate increase/decrease as compared to value on the previous day

#### Comparative status of AQI - Delhi from 01 January to 11 November 2016-2021

Category	Year No. of days	2016	2017	2018	2019	2020	2021	2016	2017	2018	2019	2020	2021
		304	315	315	315	316	315	2016	2017	2018	2019	2020	2021
Good (0-50)	0	2	0	2	5	1							
Satisfactory (51-100)	25	45	53	58	95	72	108	150	158	175	224	197	
Moderate (101-200)	83	103	105	115	124	124							
Poor (201-300)	116	102	104	90	56	69							
Very Poor (301-400)	62	57	42	38	28	38	196	165	157	140	92	118	
Severe (>401)	18	6	11	12	8	11							

#### Comparative status of PM<sub>2.5</sub> and PM<sub>10</sub> (µg/m<sup>3</sup>) running average - Delhi till November 10 (2016-2021)



\* The PM values are 24 hourly averages (6 am to 6 am)

#### Hotspots for Today:

\*Details given overleaf

Delhi	Jahangirpuri, Anand Vihar, Wazirpur, Chandni Chowk, Dwarka-Sector 8	Greater Noida	Knowledge Park - V
Faridabad	Sector 11, Sector 16 A	Gurugram	Sector-51, NISE Gwal Pahari
Ghaziabad	Loni, Sanjay Nagar	Noida	Sector - 62, Sector - 125

#### Forecast by IITM:

Parameters	November 12, 2021		November 13, 2021– November 14, 2021	
	Concentration	AQI Category	Concentration	AQI Category
PM <sub>10</sub>	445	Severe	368	Very Poor
PM <sub>2.5</sub>	272	Severe	225	Very Poor

**Wind Forecast for Delhi:**

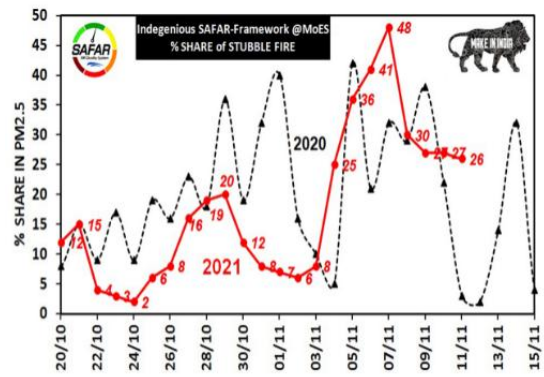
Dates	Wind speed (at surface) in km/h		Wind speed (at 900 m) in km/h	Wind Direction	
	As per IMD (at 17:30 hrs.)	As per windy.com (at 16:00 hrs.)	As per windy.com (at 16:00hrs)	As per IMD (at 17:30hrs.)	As per windy.com at 900m
November 12, 2021	12	09	27	NW	NW
November 13, 2021	12	09	26	NW	NW
November 14, 2021	08	06	12	NW	NW

**IMD Alert for Tomorrow (12.11.2021):**

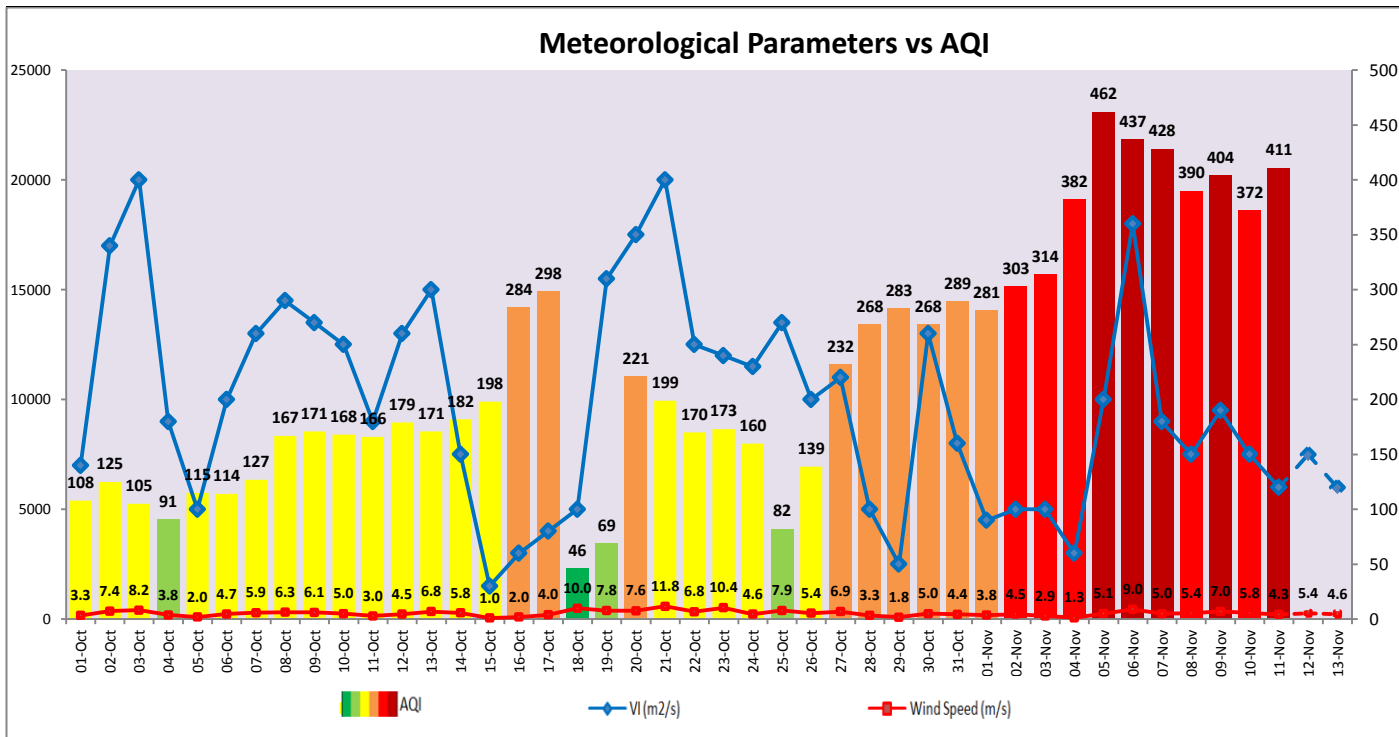
The air quality over Delhi-NCT is likely to remain in Very Poor category tomorrow. The predominant surface wind is likely to be coming from North directions of Delhi with wind speed of 04-12 kmph, partly cloudy sky and shallow fog in the morning. Ventilation index is likely to be 7,500 m<sup>2</sup>/s.

**Active Fire Events (AFEs)**

Date	Punjab		Haryana	
	Nos. on the day	Total since September 21	Nos. on the day	Total since September 21
10.11.2021	4008	51562	184	4937
10.11.2020	3127	72499	80	3354



The contribution of biomass burning in PM<sub>2.5</sub> concentration is likely to be approximately 15% on 11.11.2021 and 12.11.2021 as winds are favourable for transportation of pollutants.



▪ **Hotspots for Today**

City	Station Name	AQI value	Air Quality	Prominent Pollutant
Delhi	Jahangirpuri, Delhi - DPCC	465	Severe	PM <sub>10</sub>
	Anand Vihar, Delhi - DPCC	462	Severe	O <sub>3</sub>
	Wazirpur, Delhi - DPCC	457	Severe	PM <sub>2.5</sub>
	Chandni Chowk, Delhi - IITM	437	Severe	PM <sub>2.5</sub>
	Dwarka-Sector 8, Delhi - DPCC	433	Severe	PM <sub>2.5</sub>
Faridabad	Sector 11, Faridabad - HSPCB	449	Severe	PM <sub>10</sub>
	Sector- 16A, Faridabad - HSPCB	410	Severe	PM <sub>2.5</sub>
Gurugram	Sector-51, Gurugram - HSPCB	403	Severe	PM <sub>2.5</sub>
	NISE Gwal Pahari, Gurugram - IMD	384	Very Poor	PM <sub>2.5</sub>
Ghaziabad	Loni, Ghaziabad - UPPCB	487	Severe	PM <sub>2.5</sub>
	Sanjay Nagar, Ghaziabad - UPPCB	454	Severe	PM <sub>2.5</sub>
Greater Noida	Knowledge Park - V, Greater Noida - UPPCB	428	Severe	PM <sub>2.5</sub>
Noida	Sector - 62, Noida - IMD	452	Severe	PM <sub>2.5</sub>
	Sector - 125, Noida - UPPCB	428	Severe	PM <sub>2.5</sub>