



Central Pollution Control Board

Air Quality Status for Delhi & NCR

Dated – June 11, 2022



Current Air Quality Status:

Air Quality Index (AQI) (Average of past 24 hours)

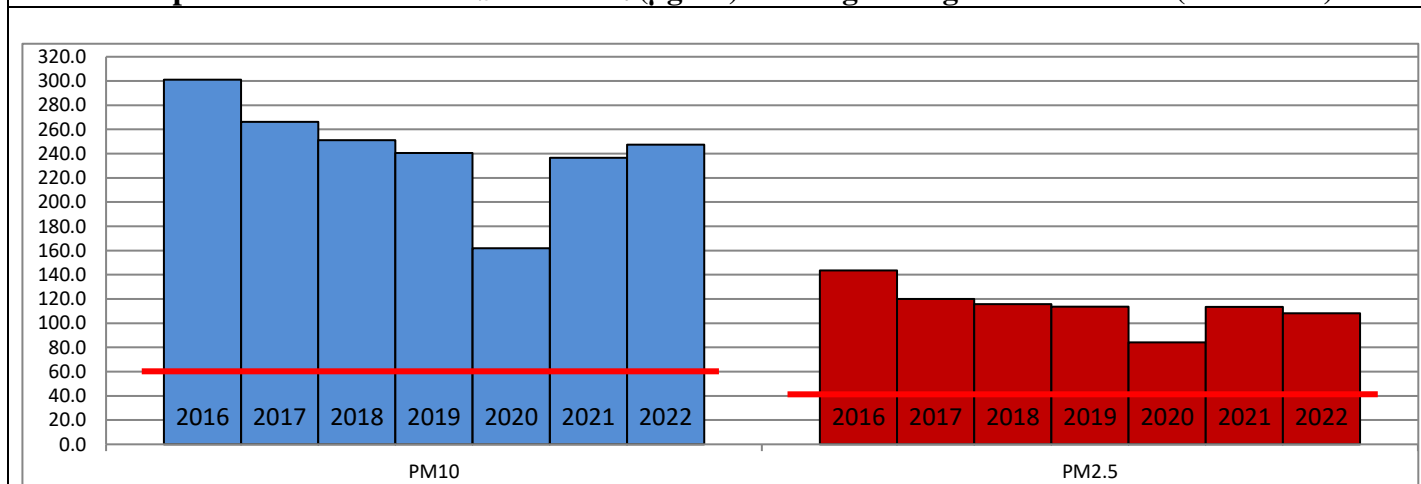
	Air Quality	AQI Value	Prominent Pollutant
Delhi	Poor	256 ↓	PM ₁₀
Faridabad	Poor	221 ↓	PM _{2.5} , PM ₁₀
Ghaziabad	Very Poor	313 ↑	PM ₁₀
Greater Noida	Very Poor	303 ↓	PM ₁₀
Gurugram	Poor	292 ↓	PM _{2.5} , PM ₁₀
Noida	Very Poor	336 ↓	PM ₁₀

*Data available for 34 stations in Delhi today. # ↓ ↑ arrows indicate a decrease/increase as compared to the value on the previous day.

Comparative status of AQI - Delhi from 01 January to 11 June 2016-2022

Category	Year	2016	2017	2018	2019	2020	2021	2022	2016	2017	2018	2019	2020	2021	2022
	No. of days	158	162	162	162	163	162	162							
Good (0–50)		0	0	0	0	1	0	0							
Satisfactory (51–100)		0	0	1	2	29	6	4	17	40	55	63	109	67	38
Moderate (101–200)		17	40	54	61	79	61	34							
Poor (201–300)		82	86	77	66	37	56	102							
Very Poor (301–400)		53	36	27	26	15	33	21	141	122	107	99	54	95	124
Severe (>401)		6	0	3	7	2	6	1							

Comparative status of PM_{2.5} and PM₁₀ (µg/m³) running average – Till June 09 (2016-2022)



Hotspots for Today:

*Details given overleaf

Delhi	Anand Vihar, Mundka, Bawana, Vivek Vihar, Pusa	Gurugram	Teri Gram, Vikas Sadan
Faridabad	Sector-11	Greater Noida	Knowledge Park-III
Ghaziabad	Loni, Vasundhara	Noida	Sector-62, Sector-125

Forecast by IITM (Delhi):

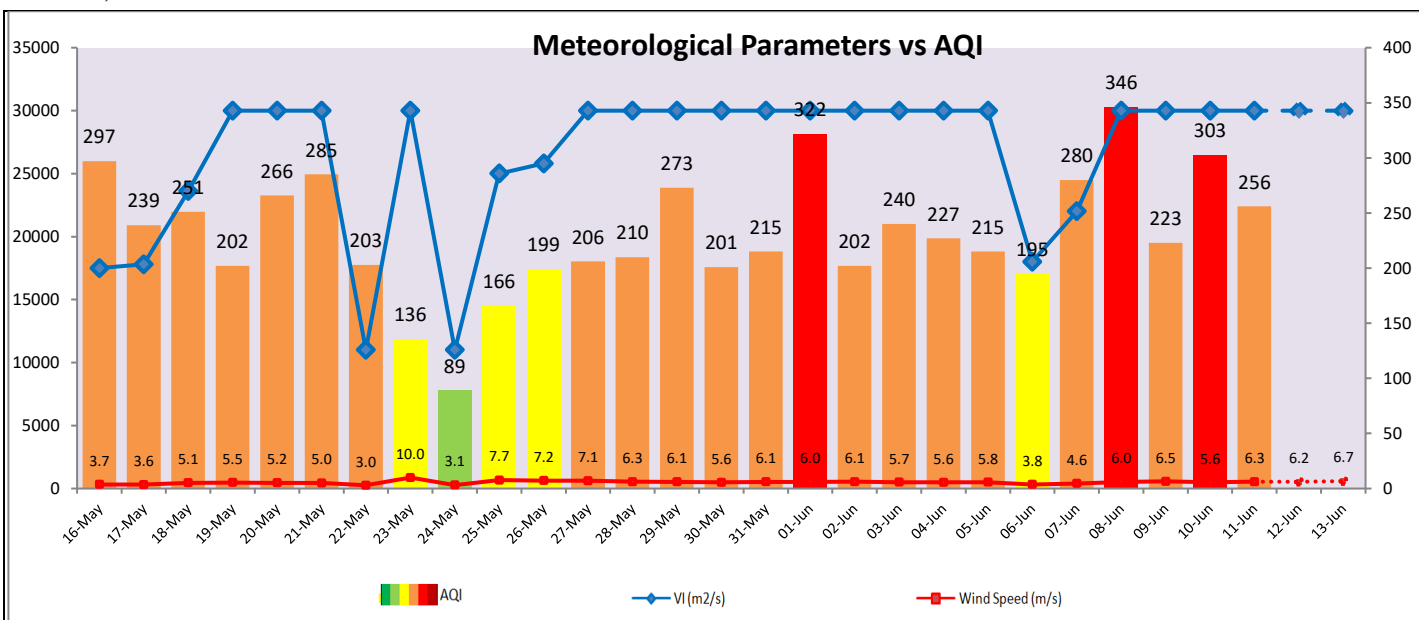
Parameters	June 12, 2022		June 13, 2022- June 14, 2022	
	Concentration	AQI Category	Concentration	AQI Category
PM ₁₀	256	Poor	228	Moderate
PM _{2.5}	65	Moderate	58	Satisfactory

Wind Forecast for Delhi:

	Wind speed (at surface) in km/h		Wind speed (at 900 m) in km/h	Wind Direction	
	As per IMD (at 17:30 hrs.)	As per windy.com (at 16:00 hrs.)	As per windy.com (at 16:00hrs)	As per IMD (at 17:30hrs.)	As per windy.com at 900m
June 12, 2022	22	20	34	WNW	W
June 13, 2022	20	24	40	W	W
June 14, 2022	30	22	36	W	W

IMD Alert for Tomorrow (12.06.2022):

The air quality is likely to improve from 12.06.2022 to 13.06.2022 but will remain in Poor to Moderate category. The predominant surface wind is likely to be coming from West/Northwest direction in Delhi with wind speed 20-28 kmph, partly cloudy sky with possibility of thundery development and strong surface winds (speed 20-30 kmph) during the day tomorrow. **Long range transported dust will impact air quality over parts of Rajasthan, Gujarat, MP and NCR during next two days.** Ventilation index is likely to be more than 30,000 m²/s.



Hotspots for Today

City	Station Name	AQI value	Air Quality	Prominent Pollutant
Delhi	Anand Vihar, Delhi - DPCC	381	Very Poor	PM ₁₀
	Mundka, Delhi - DPCC	376	Very Poor	PM ₁₀
	Bawana, Delhi - DPCC	330	Very Poor	PM ₁₀
	Vivek Vihar, Delhi - DPCC	326	Very Poor	PM ₁₀
	Pusa, Delhi - DPCC	312	Very Poor	PM ₁₀
Faridabad	Sector 11, Faridabad - HSPCB	296	Poor	PM _{2.5}
Gurugram	Teri Gram, Gurugram - HSPCB	333	Very Poor	PM ₁₀
	Vikas Sadan, Gurugram - HSPCB	322	Very Poor	PM _{2.5}
Ghaziabad	Loni, Ghaziabad - UPPCB	430	Severe	PM ₁₀
	Vasundhara, Ghaziabad - UPPCB	320	Very Poor	PM ₁₀
Greater Noida	Knowledge Park - III, Greater Noida - UPPCB	320	Very Poor	PM ₁₀
Noida	Sector - 62, Noida - IMD	382	Very Poor	PM ₁₀
	Sector - 125, Noida - UPPCB	366	Very Poor	PM ₁₀