



Central Pollution Control Board

Air Quality Status for Delhi & NCR

Dated – January 11, 2022



Current Air Quality Status:

Air Quality Index (AQI) (Average of past 24 hours)

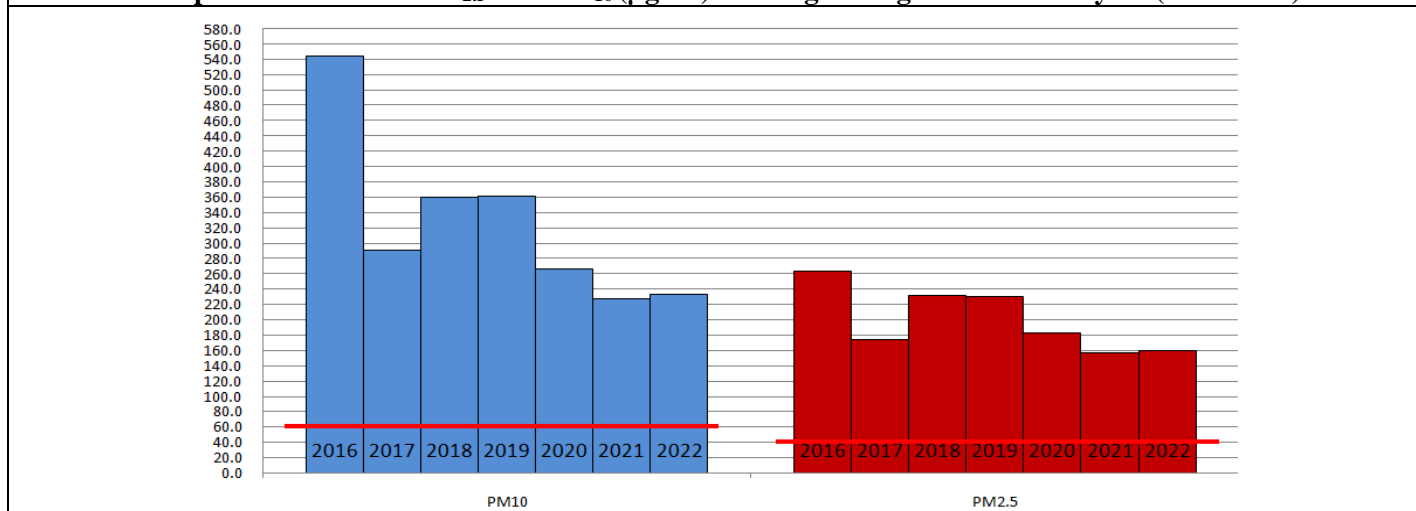
	Air Quality	AQI Value	Prominent Pollutant
Delhi	Poor	224↑	PM _{2.5}
Faridabad	Moderate	196↑	PM _{2.5}
Ghaziabad	Moderate	186↑	PM _{2.5}
Greater Noida	Poor	212↑	PM _{2.5}
Gurugram	Moderate	175↑	PM _{2.5}
Noida	Moderate	192↑	PM _{2.5} , PM ₁₀

*Data available for 37 stations in Delhi today. # ↑, ↓ arrows indicate increase/decrease as compared to value on the previous day

Comparative status of AQI - Delhi from 01 January to 11 January 2016-2022

Category	Year	2016	2017	2018	2019	2020	2021	2022	2016	2017	2018	2019	2020	2021	2022
		No. of days													
Good (0–50)		0	0	0	0	0	0	0							
Satisfactory (51–100)		0	0	0	0	0	0	2	0	0	0	0	0	2	4
Moderate (101–200)		0	0	0	0	0	2	2							
Poor (201–300)		0	4	1	2	5	5	2							
Very Poor (301–400)		8	7	8	6	4	2	4	11	11	11	11	11	9	7
Severe (>401)		3	0	2	3	2	2	1							

Comparative status of PM_{2.5} and PM₁₀ (µg/m³) running average – Till January 10 (2016-2022)



Hotspots for Today:

*Details given overleaf

Delhi	Jahangirpuri, Nehru Nagar, Pusa, Anand Vihar, Major Dhyani Chand National Stadium	Gurugram	Teri Gram, Sector-51
Faridabad	Sector-16A, Sector-11	Greater Noida	Knowledge Park – V
Ghaziabad	Indirapuram, Vasundhara	Noida	Sector -125, Sector - 1

Forecast by IITM:

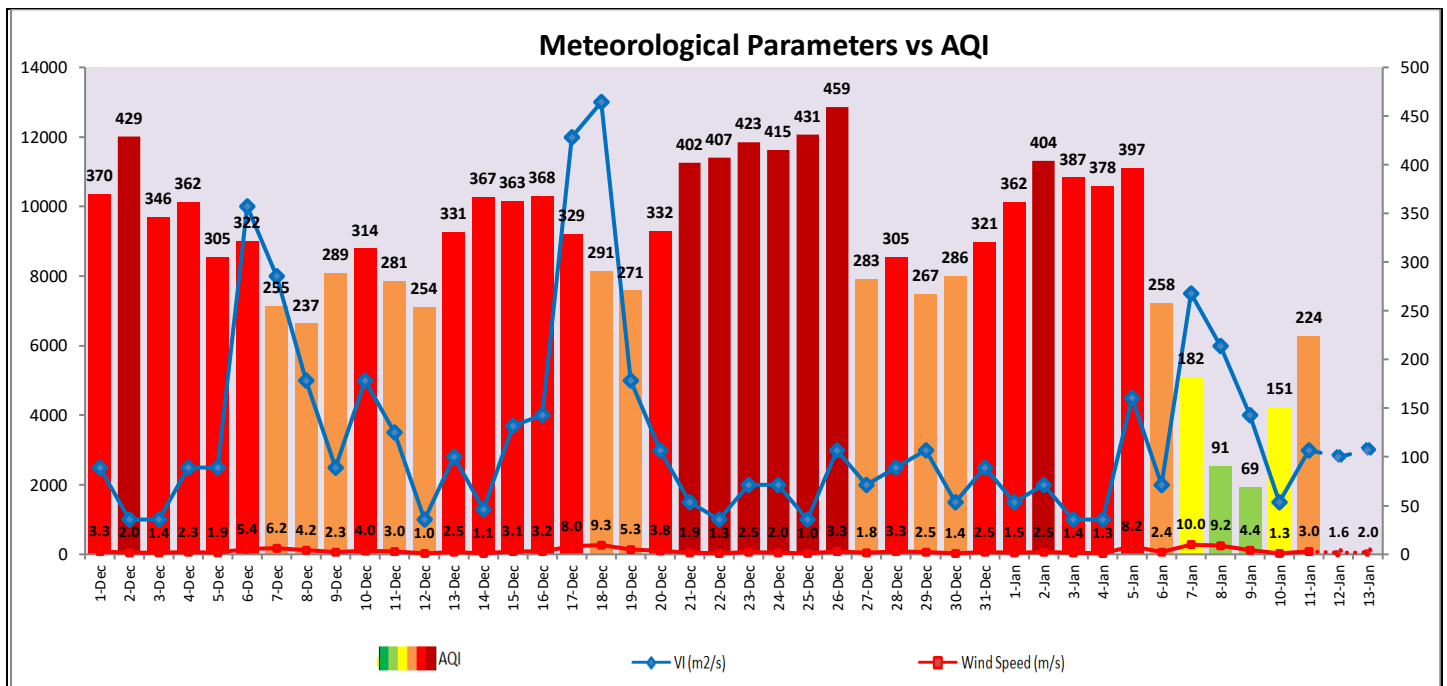
Parameters	January 12, 2022		January 13, 2022-January 14, 2022	
	Concentration	AQI Category	Concentration	AQI Category
PM ₁₀	178	Moderate	208	Moderate
PM _{2.5}	105	Poor	123	Very Poor

▪ **Wind Forecast for Delhi:**

	Wind speed (at surface) in km/h		Wind speed (at 900 m) in km/h	Wind Direction	
	As per IMD (at 17:30 hrs.)	As per windy.com (at 16:00 hrs.)	As per windy.com (at 16:00hrs)	As per IMD (at 17:30hrs.)	As per windy.com at 900m
January 12, 2022	04	06	10	NW	NW
January 13, 2022	-	05	05	CALM	NW
January 14, 2022	04	05	09	N	NW

▪ **IMD Alert for Tomorrow (12.01.2022):**

The air quality is likely to remain in Poor category on 12.01.2022 and Poor to lower end of Very Poor category on 13.01.2022. The predominant surface wind is likely to be coming from Northwest direction of Delhi with wind speed upto 04 kmph, partly cloudy sky and moderate to dense fog in the morning. Ventilation index is likely to be 2,800 m²/s.



▪ **Hotspots for Today**

City	Station Name	AQI value	Air Quality	Prominent Pollutant
Delhi	Jahangirpuri, Delhi - DPCC	349	Very Poor	PM _{2.5}
	Nehru Nagar, Delhi - DPCC	330	Very Poor	PM _{2.5}
	Pusa, Delhi - DPCC	306	Very Poor	PM _{2.5}
	Anand Vihar, Delhi - DPCC	288	Poor	PM _{2.5}
	Major Dhyan Chand National Stadium, Delhi - DPCC	286	Poor	PM _{2.5}
Faridabad	Sector- 16A, Faridabad - HSPCB	238	Poor	PM _{2.5}
	Sector 11, Faridabad - HSPCB	236	Poor	PM _{2.5}
Gurugram	Sector-51, Gurugram - HSPCB	271	Poor	PM _{2.5}
	Teri Gram, Gurugram - HSPCB	162	Moderate	PM _{2.5}
Ghaziabad	Indirapuram, Ghaziabad - UPPCB	200	Moderate	PM _{2.5}
	Vasundhara, Ghaziabad - UPPCB	189	Moderate	PM _{2.5}
Greater Noida	Knowledge Park - V, Greater Noida - UPPCB	223	Poor	PM _{2.5}
Noida	Sector-1, Noida - UPPCB	281	Poor	PM _{2.5}
	Sector - 125, Noida - UPPCB	171	Moderate	PM _{2.5}