



Central Pollution Control Board

Air Quality Status for Delhi & NCR

Dated – December 10, 2022



Current Air Quality Status:

Air Quality Index (AQI) (Average of past 24 hours)

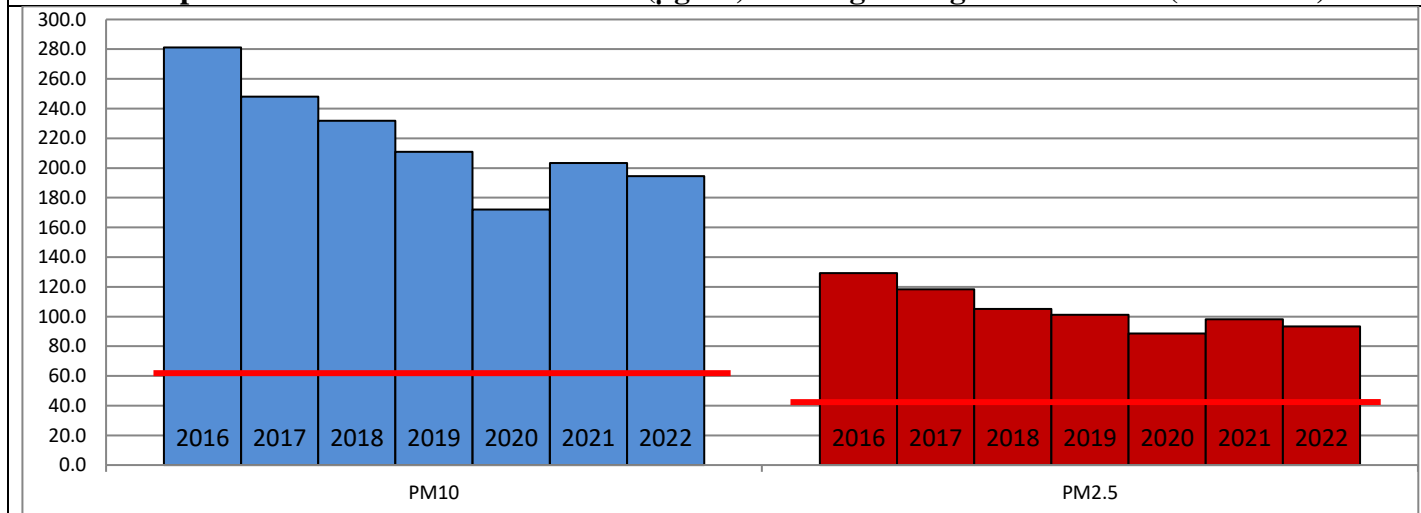
	Air Quality	AQI Value	Prominent Pollutant
Delhi	Very Poor	360 ↑	PM ₁₀ , PM _{2.5}
Faridabad	Very Poor	304 ↑	PM _{2.5}
Ghaziabad	Very Poor	344 ↑	PM ₁₀
Greater Noida	Severe	422 ↑	PM ₁₀
Gurugram	Poor	288 ↑	PM _{2.5}
Noida	Very Poor	350 ↑	PM ₁₀

*Data available for 36 stations in Delhi today. # ↑ ↓ arrows indicate a decrease/increase as compared to the value on the previous day.

Comparative status of AQI - Delhi from 01 January to 10 December 2016-2022

Category	Year	2016	2017	2018	2019	2020	2021	2022	2016	2017	2018	2019	2020	2021	2022
	No. of days	333	344	344	344	345	344	344							
Good (0–50)		0	2	0	2	5	1	3							
Satisfactory (51–100)		24	45	53	59	95	81	65	110	151	158	179	226	197	160
Moderate (101–200)		86	104	105	118	126	115	92							
Poor (201–300)		119	107	111	100	66	73	128							
Very Poor (301–400)		82	78	62	48	41	56	51	223	193	186	165	119	147	184
Severe (>401)		22	8	13	17	12	18	5							

Comparative status of PM₁₀ and PM_{2.5} (µg/m³) running average – Till Dec 07 (2016-2022)



Hotspots for Today:

*Details given overleaf

Delhi	Shadipur, Vivek Vihar, Anand Vihar, Nehru Nagar, NSIT Dwarka	Ghaziabad	Vasundhara
Faridabad	Sector-16A, Sector-11	Greater Noida	Knowledge Park-V
Gurugram	Sector-51	Noida	Sector – 62, Sector-116

Forecast by IITM (Delhi):

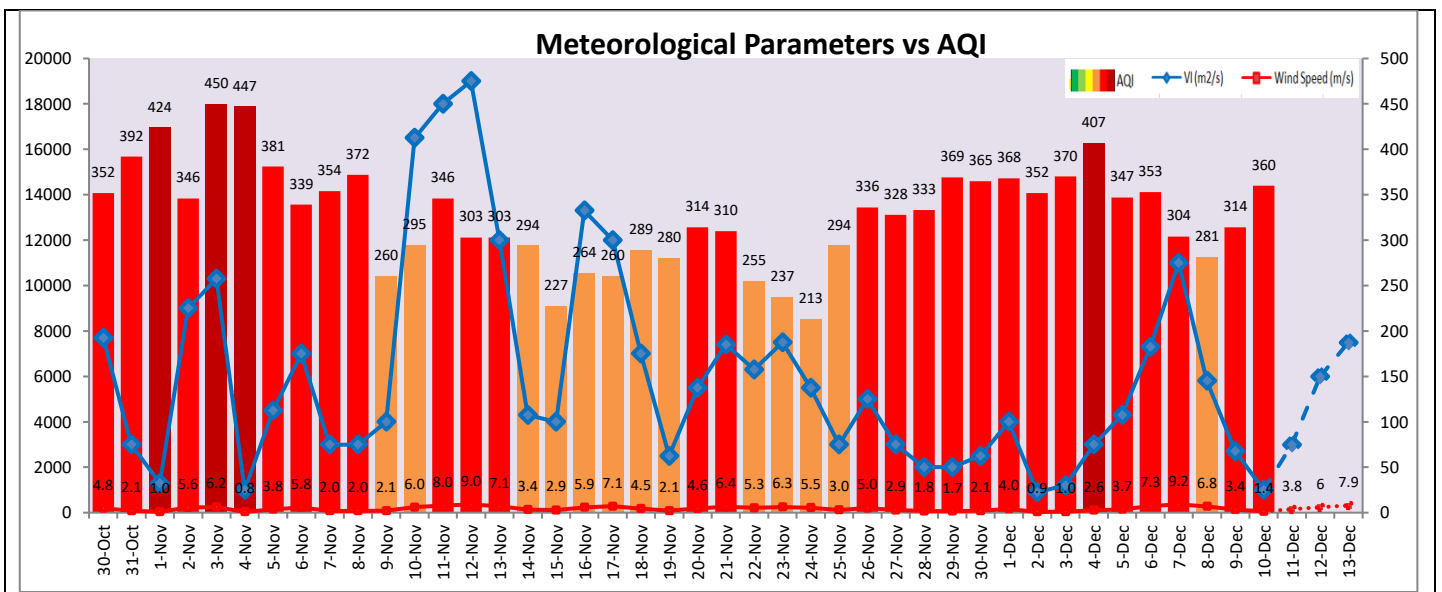
	Dec 11, 2022		Dec 12, 2022- Dec 13, 2022	
	Concentration	AQI Category	Concentration	AQI Category
PM ₁₀	316	Poor	343	Poor
PM _{2.5}	171	Very Poor	187	Very Poor

Wind Forecast for Delhi:

	Wind speed (at surface) in km/h		Wind speed (at 900 m) in km/h	Wind Direction	
	As per IMD (range)	As per windy.com (at 16:00 hrs.)	As per windy.com (at 16:00hrs)	As per IMD	As per windy.com at 900m
Dec 11, 2022	06-10	10	23	NW	NW
Dec 12, 2022	06-10	10	27	NW	NW
Dec 13, 2022	12-16	13	44	NW	NW

IMD Alert for Tomorrow (11.12.2022):

The air quality is likely to improve but remain in lower end of Very Poor category on 11.12.2022. The predominant surface wind is likely to be coming from Northwest direction in Delhi with wind speed 06-10 kmph, mainly clear sky and mist/shallow fog in the morning tomorrow. Ventilation index is likely to be 3,000 m²/s.



Hotspots for Today

City	Station Name	AQI value	Air Quality	Prominent Pollutant
Delhi	Shadipur, Delhi - CPCB	419	Severe	PM ₁₀
	Vivek Vihar, Delhi - DPCC	412	Severe	PM _{2.5}
	Anand Vihar, Delhi - DPCC	410	Severe	PM _{2.5}
	Nehru Nagar, Delhi - DPCC	409	Severe	PM _{2.5}
	NSIT Dwarka, Delhi - CPCB	407	Severe	PM _{2.5}
Faridabad	Sector- 16A, Faridabad - HSPCB	340	Very Poor	PM _{2.5}
	Sector 11, Faridabad - HSPCB	328	Very Poor	PM _{2.5}
Gurugram	Sector-51, Gurugram - HSPCB	310	Very Poor	PM _{2.5}
Ghaziabad	Vasundhara, Ghaziabad - UPPCB	402	Severe	PM ₁₀
Greater Noida	Knowledge Park - V, Greater Noida - UPPCB	435	Severe	PM ₁₀
Noida	Sector - 62, Noida - IMD	423	Severe	PM ₁₀
	Sector-116, Noida - UPPCB	366	Very Poor	PM _{2.5}