



# Central Pollution Control Board

## Air Quality Status for Delhi & NCR

Dated – December 10, 2021



### Current Air Quality Status:

#### Air Quality Index (AQI) (Average of past 24 hours)

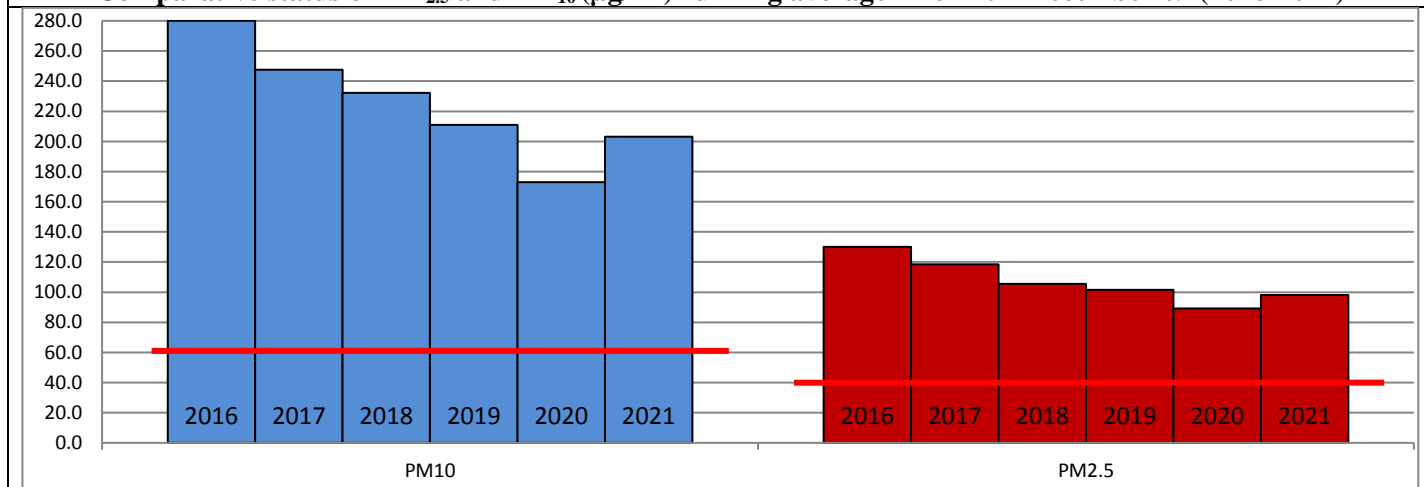
	Air Quality	AQI Value	Prominent Pollutant
Delhi	Very Poor	314↑	PM <sub>10</sub> , PM <sub>2.5</sub>
Faridabad	Poor	291↑	PM <sub>2.5</sub>
Ghaziabad	Poor	284↓	PM <sub>2.5</sub>
Greater Noida	Poor	271↓	PM <sub>2.5</sub>
Gurugram	Poor	294↑	PM <sub>2.5</sub>
Noida	Poor	296↑	PM <sub>10</sub> , PM <sub>2.5</sub>

\*Data available for 36 stations in Delhi today. # ↓, ↑ arrows indicate increase/decrease as compared to value on the previous day

#### Comparative status of AQI - Delhi from 01 January to 10 December 2016-2021

Category	Year	2016	2017	2018	2019	2020	2021	2016	2017	2018	2019	2020	2021
	No. of days	333	344	344	345	346	345						
Good (0-50)		0	2	0	2	5	1						
Satisfactory (51-100)		25	45	53	59	95	72	108	151	158	179	226	197
Moderate (101-200)		83	104	105	118	126	124						
Poor (201-300)		119	107	111	101	67	74						
Very Poor (301-400)		84	78	62	48	41	56	225	193	186	166	120	148
Severe (>401)		22	8	13	17	12	18						

#### Comparative status of PM<sub>2.5</sub> and PM<sub>10</sub> (µg/m<sup>3</sup>) running average - Delhi till December 09 (2016-2021)



\* The PM values are 24 hourly averages (6 am to 6 am)

#### Hotspots for Today:

\*Details given overleaf

Delhi	Anand Vihar, Jahangirpuri, Nehru Nagar, Wazirpur, Rohini	Gurugram	Teri Gram, Sector-51
Faridabad	Sector – 16A, Sector - 30	Greater Noida	Knowledge Park - V
Ghaziabad	Loni, Sanjay Nagar	Noida	Sector – 1, Sector – 62

#### Forecast by IITM:

Parameters	December 11, 2021		December 12, 2021– December 13, 2021	
	Concentration	AQI Category	Concentration	AQI Category
PM <sub>10</sub>	257	Poor	280	Poor
PM <sub>2.5</sub>	141	Very Poor	154	Very Poor

▪ **Wind Forecast for Delhi:**

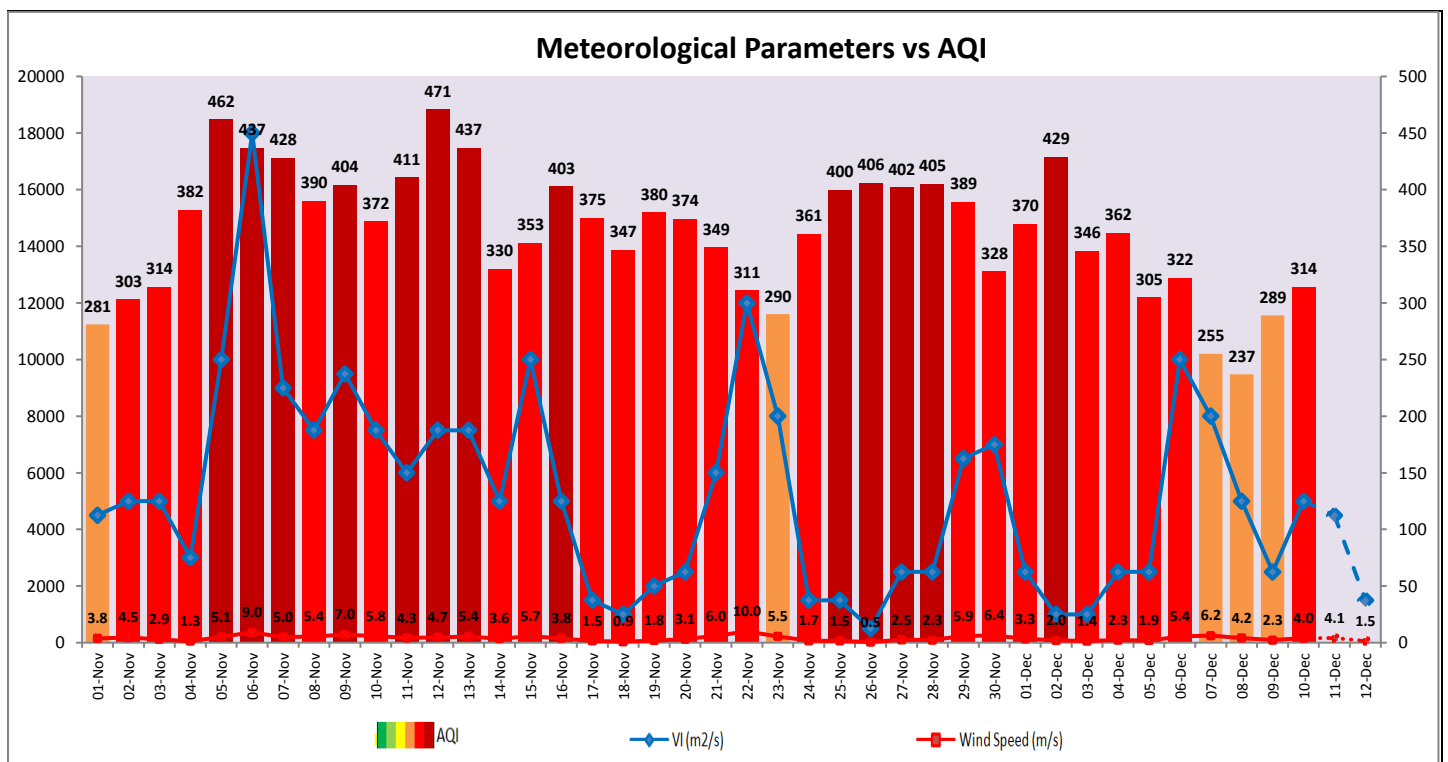
Dates	Wind speed (at surface) in km/h		Wind speed (at 900 m) in km/h	Wind Direction	
	As per IMD (at 17:30 hrs.)	As per windy.com (at 16:00 hrs.)	As per windy.com (at 16:00hrs)	As per IMD (at 17:30hrs.)	As per windy.com at 900m
December 11, 2021	10	11	17	NW	NW
December 12, 2021	06	07	07	NW	W
December 13, 2021	06	06	06	NW	SE

▪ **IMD Alert for Tomorrow (11.12.2021):**

The air quality is likely to remain in Poor category tomorrow and on 12.12.2021. The predominant surface wind is likely to be coming from Northwest direction of Delhi with wind speed 08-10 kmph, mainly clear sky and mist/shallow fog in the morning. Ventilation index is likely to be 4,500 m<sup>2</sup>/s.

▪ **Active Fire Events (AFE) s**

Date	Punjab		Haryana	
	Nos. on the day	Total since September 21	Nos. on the day	Total since September 21
09.12.2021	-	71304	-	6987
09.12.2020	-	83002	-	4202



▪ Hotspots for Today

City	Station Name	AQI value	Air Quality	Prominent Pollutant
Delhi	Anand Vihar, Delhi - DPCC	387	Very Poor	PM <sub>10</sub>
	Jahangirpuri, Delhi - DPCC	385	Very Poor	PM <sub>2.5</sub>
	Nehru Nagar, Delhi - DPCC	379	Very Poor	PM <sub>2.5</sub>
	Wazirpur, Delhi - DPCC	350	Very Poor	PM <sub>2.5</sub>
	Rohini, Delhi - DPCC	348	Very Poor	PM <sub>2.5</sub>
Faridabad	Sector- 16A, Faridabad - HSPCB	291	Poor	PM <sub>2.5</sub>
	Sector 30, Faridabad - HSPCB	290	Poor	PM <sub>2.5</sub>
Gurugram	Sector-51, Gurugram - HSPCB	303	Very Poor	PM <sub>2.5</sub>
	Teri Gram, Gurugram - HSPCB	283	Poor	PM <sub>2.5</sub>
Ghaziabad	Loni, Ghaziabad - UPPCB	306	Very Poor	PM <sub>2.5</sub>
	Sanjay Nagar, Ghaziabad - UPPCB	291	Poor	PM <sub>2.5</sub>
Greater Noida	Knowledge Park - V, Greater Noida - UPPCB	271	Poor	PM <sub>2.5</sub>
Noida	Sector-1, Noida - UPPCB	335	Very Poor	PM <sub>2.5</sub>
	Sector - 62, Noida - IMD	307	Very Poor	PM <sub>10</sub>