



Central Pollution Control Board

Air Quality Status for Delhi &NCR

Dated – November 10, 2021



Current Air Quality Status:

Air Quality Index (AQI) (Average of past 24 hours)

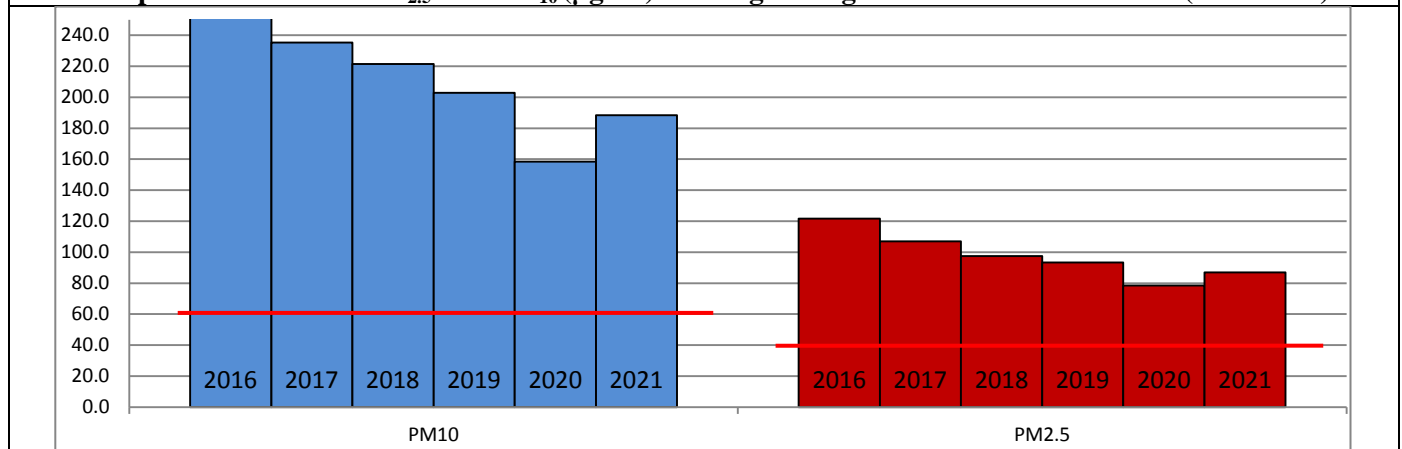
	Air Quality	AQI Value	Prominent Pollutant
Delhi	Very Poor	372 ↓	PM ₁₀ , PM _{2.5}
Faridabad	Very Poor	380 ↓	PM ₁₀ , PM _{2.5}
Ghaziabad	Severe	428 ↓	PM _{2.5}
Greater Noida	Very Poor	378 ↓	PM _{2.5}
Gurugram	Very Poor	340 ↓	PM _{2.5}
Noida	Very Poor	374 ↓	PM _{2.5}

*Data available for 35 stations in Delhi today. # ↓, ↑ arrows indicate increase/decrease as compared to value on the previous day

Comparative status of AQI - Delhi from 01 January to 10 November 2016-2021

Category	Year No. of days	2016	2017	2018	2019	2020	2021	2016	2017	2018	2019	2020	2021	
		303	314	314	314	315	314							
Good (0–50)		0	2	0	2	5	1							
Satisfactory (51–100)		25	45	53	58	95	72	108	150	158	175	224	197	
Moderate (101–200)		83	103	105	115	124	124							
Poor (201–300)		116	102	104	90	56	69							
Very Poor (301–400)		62	57	42	37	27	38	195	164	156	139	91	117	
Severe (>401)		17	5	10	12	8	10							

Comparative status of PM_{2.5} and PM₁₀ (µg/m³) running average - Delhi till November 09 (2016-2021)



* The PM values are 24 hourly averages (6 am to 6 am)

Hotspots for Today:

*Details given overleaf

Delhi	Anand Vihar, Alipur, Bawana, Vivek Vihar, Wazirpur	Greater Noida	Knowledge Park - V
Faridabad	Sector 11, Sector 30	Gurugram	Vikas Sadan, NISE Gwal Pahari
Ghaziabad	Loni, Sanjay Nagar	Noida	Sector-116, Sector - 125

Forecast by IITM:

Parameters	November 11, 2021		November 12, 2021– November 13, 2021	
	Concentration	AQI Category	Concentration	AQI Category
PM ₁₀	289	Poor	385	Very Poor
PM _{2.5}	178	Very Poor	237	Very Poor

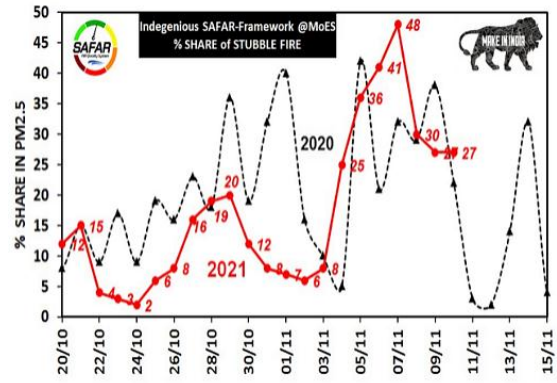
Wind Forecast for Delhi:					
Dates	Wind speed (at surface) in km/h		Wind speed (at 900 m) in km/h	Wind Direction	
	As per IMD (at 17:30 hrs.)	As per windy.com (at 16:00 hrs.)	As per windy.com (at 16:00hrs)	As per IMD (at 17:30hrs.)	As per windy.com at 900m
November 11, 2021	08	10	24	NW	NW
November 12, 2021	04	10	22	NW	NW
November 13, 2021	04	09	26	NW	NW

IMD Alert for Tomorrow (11.11.2021):

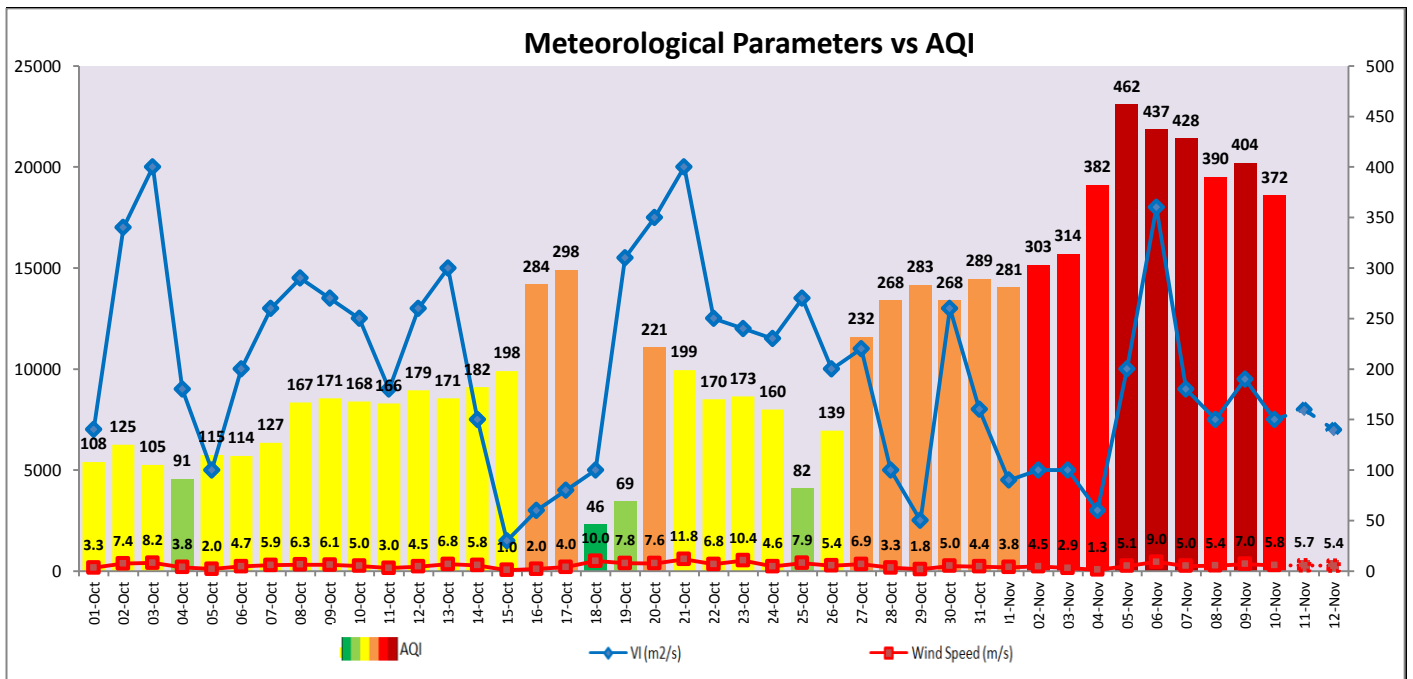
The air quality over Delhi-NCT is likely to improve gradually tomorrow but remain in Very Poor category. The predominant surface wind is likely to be coming from Northwest directions of Delhi with wind speed of 08-16 kmph, mainly clear sky and mist in the morning. Ventilation index is likely to be 8,000 m²/s.

Active Fire Events (AFE) s

Date	Punjab		Haryana	
	Nos. on the day	Total since September 21	Nos. on the day	Total since September 21
09.11.2021	5079	47554	217	4753
09.11.2020	1718	69372	21	3274



The contribution of biomass burning in PM_{2.5} concentration is likely to be approximately 14% on 10.11.2021 as winds are favourable for transportation of pollutants.



▪ **Hotspots for Today**

City	Station Name	AQI value	Air Quality	Prominent Pollutant
Delhi	Anand Vihar, Delhi - DPCC	438	Severe	PM ₁₀
	Alipur, Delhi - DPCC	417	Severe	O ₃
	Bawana, Delhi - DPCC	405	Severe	PM _{2.5}
	Vivek Vihar, Delhi - DPCC	404	Severe	PM _{2.5}
	Wazirpur, Delhi - DPCC	403	Severe	PM _{2.5}
Faridabad	Sector 11, Faridabad - HSPCB	445	Severe	PM ₁₀
	Sector 30, Faridabad - HSPCB	376	Very Poor	PM _{2.5}
Gurugram	Vikas Sadan, Gurugram - HSPCB	367	Very Poor	PM _{2.5}
	NISE Gwal Pahari, Gurugram - IMD	361	Very Poor	PM _{2.5}
Ghaziabad	Loni, Ghaziabad - UPPCB	453	Severe	PM _{2.5}
	Sanjay Nagar, Ghaziabad - UPPCB	435	Severe	PM _{2.5}
Greater Noida	Knowledge Park - V, Greater Noida - UPPCB	400	Very Poor	PM _{2.5}
Noida	Sector-116, Noida - UPPCB	391	Very Poor	PM _{2.5}
	Sector - 125, Noida - UPPCB	375	Very Poor	PM _{2.5}