



Central Pollution Control Board

Air Quality Status for Delhi & NCR

Dated – June 10, 2022



Current Air Quality Status:

Air Quality Index (AQI) (Average of past 24 hours)

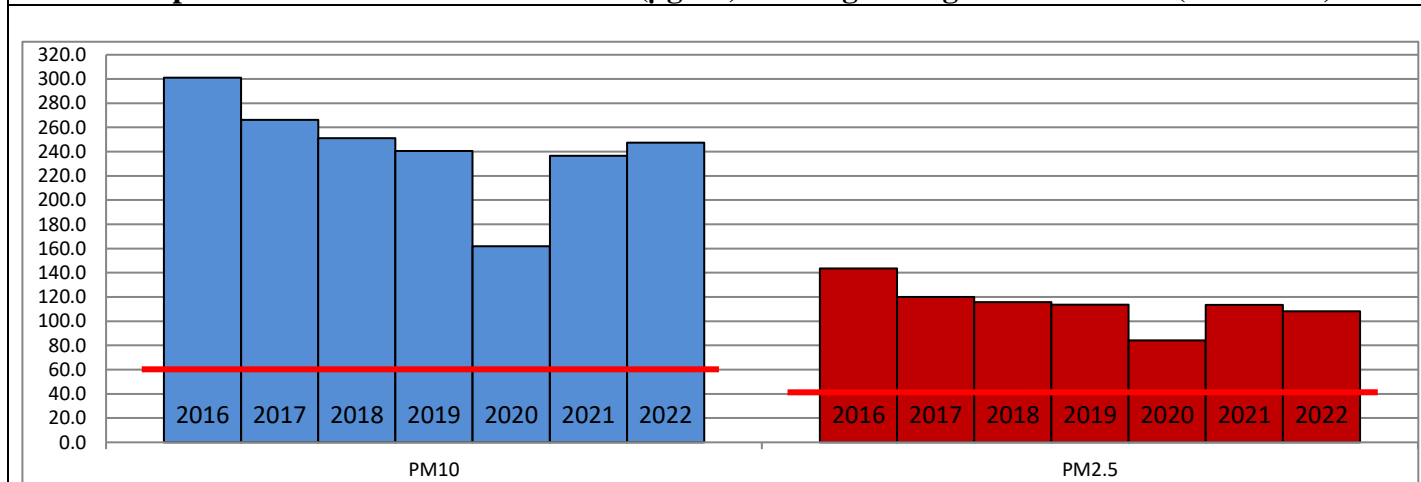
	Air Quality	AQI Value	Prominent Pollutant
Delhi	Very Poor	303 ↑	PM _{2.5} , PM ₁₀
Faridabad	Poor	297 ↑	PM _{2.5} , PM ₁₀
Ghaziabad	Very Poor	304 ↑	PM ₁₀
Greater Noida	Very Poor	319 ↑	PM ₁₀
Gurugram	Very Poor	310 ↑	PM _{2.5} , PM ₁₀
Noida	Very Poor	342 ↑	PM ₁₀

*Data available for 37 stations in Delhi today. # ↑ ↓ arrows indicate a decrease/increase as compared to the value on the previous day.

Comparative status of AQI - Delhi from 01 January to 10 June 2016-2022

Category	Year	2016	2017	2018	2019	2020	2021	2022	2016	2017	2018	2019	2020	2021	2022
	No. of days	157	161	161	161	162	161	161							
Good (0–50)		0	0	0	0	1	0	0							
Satisfactory (51–100)		0	0	1	2	29	6	4	17	39	54	63	108	66	38
Moderate (101–200)		17	39	53	61	78	60	34							
Poor (201–300)		81	86	77	65	37	56	101							
Very Poor (301–400)		53	36	27	26	15	33	21	140	122	107	98	54	95	123
Severe (>401)		6	0	3	7	2	6	1							

Comparative status of PM_{2.5} and PM₁₀ (µg/m³) running average – Till June 09 (2016-2022)



Hotspots for Today:

*Details given overleaf

Delhi	Mundka, Anand Vihar, Dwarka Sector-8, Wazirpur, NSIT Dwarka	Gurugram	Sector-51, Vikas Sadan
Faridabad	Sector-11	Greater Noida	Knowledge Park-III
Ghaziabad	Loni, Vasundhara	Noida	Sector-125, Sector-116

Forecast by IITM (Delhi):

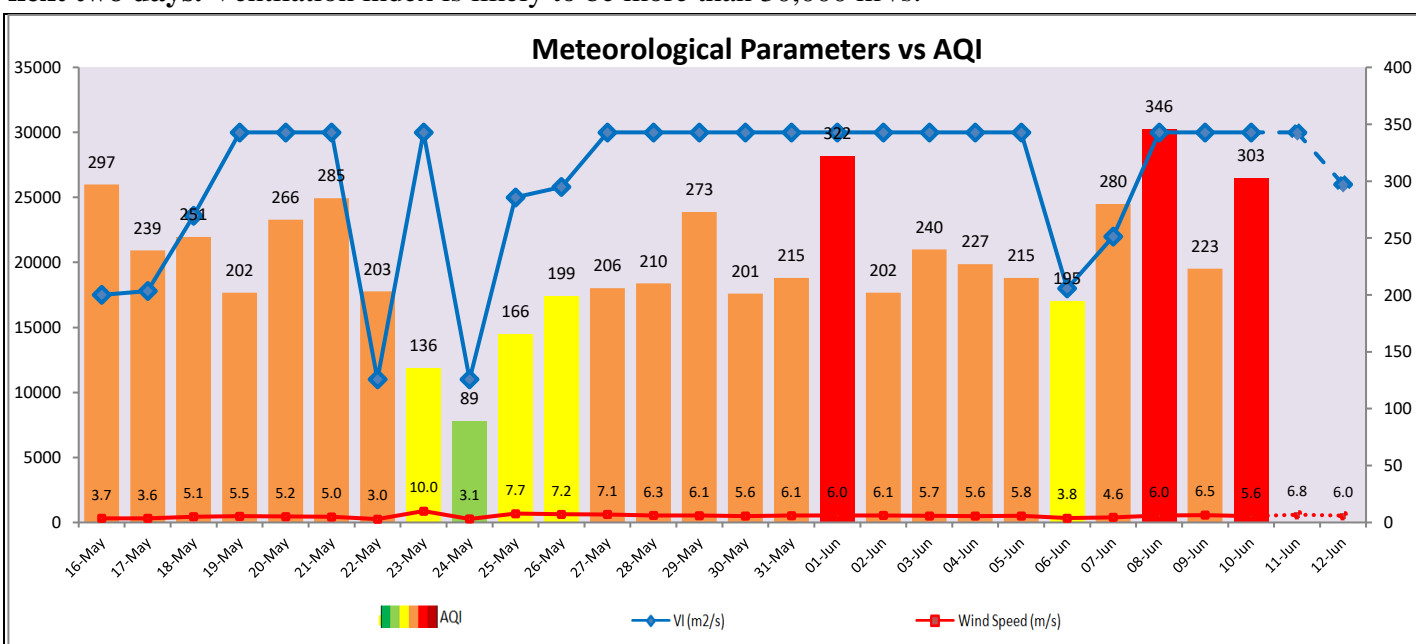
Parameters	June 11, 2022		June 12, 2022- June 13, 2022	
	Concentration	AQI Category	Concentration	AQI Category
PM ₁₀	283	Poor	252	Poor
PM _{2.5}	67	Moderate	60	Satisfactory

Wind Forecast for Delhi:

	Wind speed (at surface) in km/h		Wind speed (at 900 m) in km/h	Wind Direction	
	As per IMD (at 17:30 hrs.)	As per windy.com (at 16:00 hrs.)	As per windy.com (at 16:00hrs)	As per IMD (at 17:30hrs.)	As per windy.com at 900m
June 11, 2022	24	26	41	WNW	W
June 12, 2022	20	23	38	WNW	W
June 13, 2022	24	26	40	W	W

IMD Alert for Tomorrow (11.06.2022):

The air quality is likely to improve from 11.06.2022 to 12.06.2022 and will remain in Poor to Moderate category. The predominant surface wind is likely to be coming from West/Northwest direction in Delhi with wind speed 24-30 kmph, and partly cloudy sky with possibility of thundery development tomorrow. **Long range transported dust will impact air quality over parts of Rajasthan, Gujarat, MP and NCR during next two days.** Ventilation index is likely to be more than 30,000 m²/s.



Hotspots for Today

City	Station Name	AQI value	Air Quality	Prominent Pollutant
Delhi	Mundka, Delhi - DPCC	398	Very Poor	PM ₁₀
	Anand Vihar, Delhi - DPCC	371	Very Poor	PM ₁₀
	Dwarka-Sector 8, Delhi - DPCC	360	Very Poor	PM ₁₀
	NSIT Dwarka, Delhi - CPCB	360	Very Poor	PM _{2.5}
	Wazirpur, Delhi - DPCC	339	Very Poor	PM ₁₀
Faridabad	Sector 11, Faridabad - HSPCB	338	Very Poor	PM _{2.5}
Gurugram	Sector-51, Gurugram - HSPCB	336	Very Poor	PM ₁₀
	Vikas Sadan, Gurugram - HSPCB	319	Very Poor	PM _{2.5}
Ghaziabad	Loni, Ghaziabad - UPPCB	390	Very Poor	PM ₁₀
	Vasundhara, Ghaziabad - UPPCB	318	Very Poor	PM ₁₀
Greater Noida	Knowledge Park - III, Greater Noida - UPPCB	312	Very Poor	PM ₁₀
Noida	Sector - 125, Noida - UPPCB	379	Very Poor	PM ₁₀
	Sector-116, Noida - UPPCB	331	Very Poor	PM ₁₀