



Central Pollution Control Board

Air Quality Status for Delhi & NCR

Dated – May 10, 2022



Current Air Quality Status:

Air Quality Index (AQI) (Average of past 24 hours)

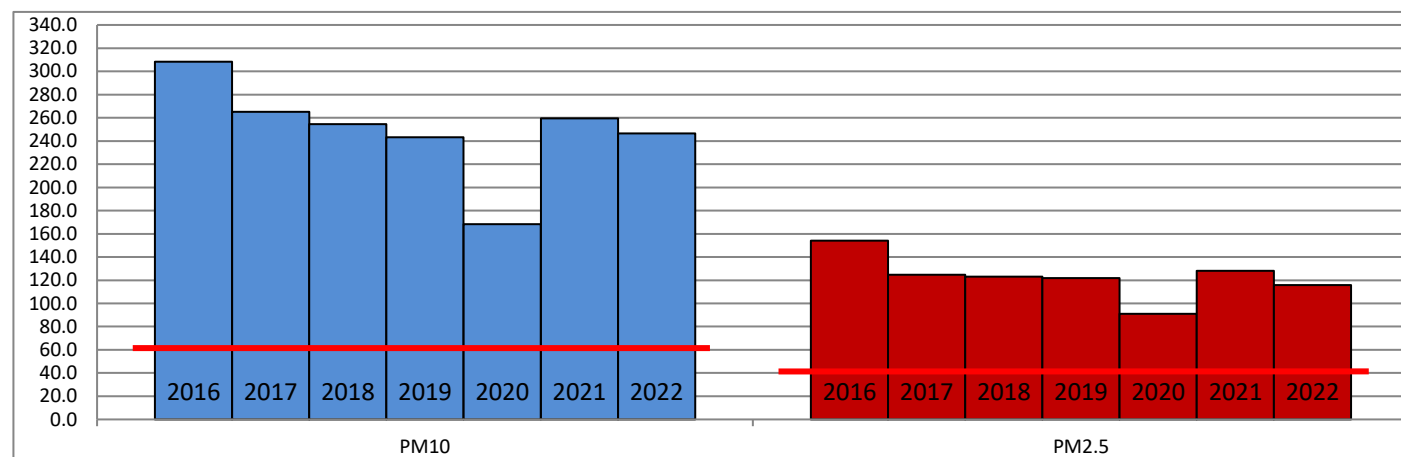
	Air Quality	AQI Value	Prominent Pollutant
Delhi	Moderate	160 ↓	PM _{2.5} , O ₃
Faridabad	Moderate	155 ↓	PM ₁₀
Ghaziabad	Moderate	199 ↑	PM ₁₀ , O ₃
Greater Noida	Moderate	142 ↓	PM ₁₀
Gurugram	Moderate	147 ↓	PM _{2.5} , PM ₁₀
Noida	Moderate	146 ↓	PM ₁₀

*Data available for 36 stations in Delhi today. # ↓ ↑ arrows indicate increase/decrease as compared to value on the previous day

Comparative status of AQI - Delhi from 01 January to 10 May 2016-2022

Category	Year	2016	2017	2018	2019	2020	2021	2022	2016	2017	2018	2019	2020	2021	2022
		No. of days	127	130	130	130	131	130	130						
Good (0-50)		0	0	0	0	1	0	0							
Satisfactory (51-100)		0	0	1	2	27	0	3	10	31	39	46	79	39	30
Moderate (101-200)		10	31	38	44	51	39	27							
Poor (201-300)		64	66	63	53	35	53	81							
Very Poor (301-400)		47	33	25	24	15	32	18	117	99	91	84	52	91	100
Severe (>401)		6	0	3	7	2	6	1							

Comparative status of PM_{2.5} and PM₁₀ (µg/m³) running average – Till May 08 (2016-2022)



Hotspots for Today:

*Details given overleaf

Delhi	DTU, Bawana, NSIT Dwarka, Mundka, Lodhi Road	Gurugram	Teri Gram, Sector-51
Faridabad	Sector-30, Sector-11	Greater Noida	Knowledge Park – III
Ghaziabad	Loni, Vasundhara	Noida	Sector-125, Sector-116

Forecast by IITM:

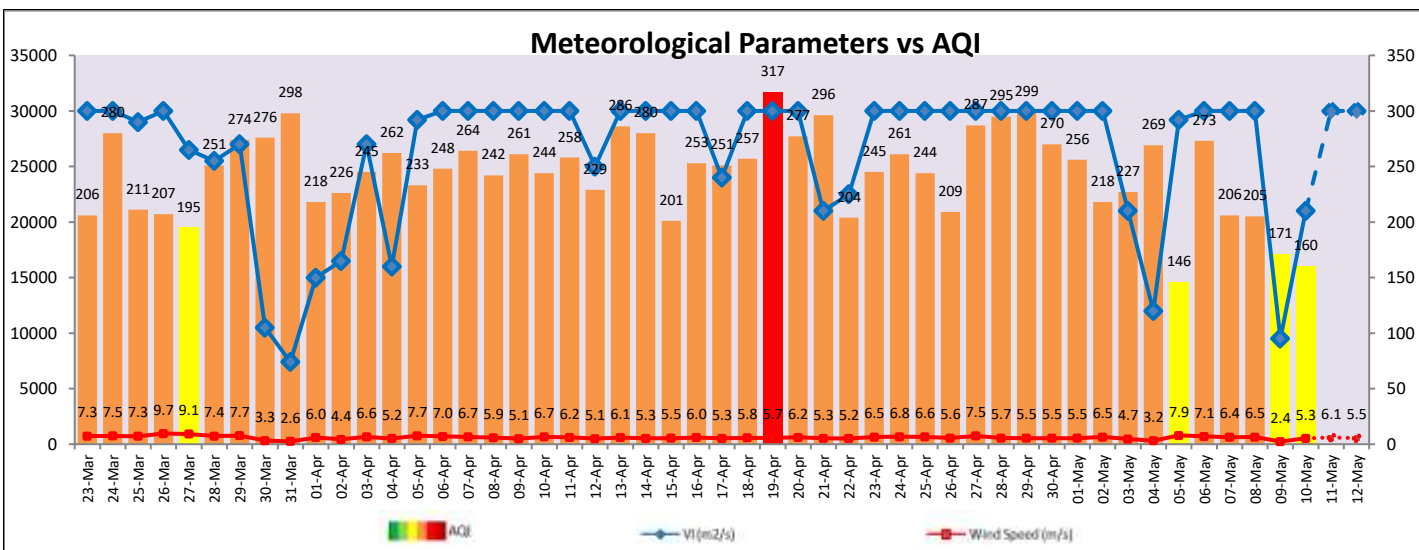
Parameters	May 11, 2022		May 12, 2022- May 13, 2022	
	Concentration	AQI Category	Concentration	AQI Category
PM ₁₀	132	Moderate	185	Moderate
PM _{2.5}	51	Satisfactory	72	Moderate

Wind Forecast for Delhi:

	Wind speed (at surface) in km/h		Wind speed (at 900 m) in km/h	Wind Direction	
	As per IMD (at 17:30 hrs.)	As per windy.com (at 16:00 hrs.)	As per windy.com (at 16:00hrs)	As per IMD (at 17:30hrs.)	As per windy.com at 900m
May 11, 2022	16	09	17	SE	NW
May 12, 2022	10	11	22	SSE	NW
May 13, 2022	16	14	26	W	NW

IMD Alert for Tomorrow (11.05.2022):

The air quality is likely to remain in Moderate to Lower end of Poor category on 11.05.2022 and 12.05.2022. The predominant surface wind is likely to be coming from Southeast/North/East direction of Delhi with wind speed 12-16 kmph and mainly clear sky tomorrow. Ventilation index is likely to be more than 30,000 m²/s tomorrow.



Hotspots for Today

City	Station Name	AQI value	Air Quality	Prominent Pollutant
Delhi	DTU, Delhi - CPCB	244	Poor	PM _{2.5}
	NSIT Dwarka, Delhi - CPCB	227	Poor	PM _{2.5}
	Mundka, Delhi - DPCC	218	Poor	O ₃
	Bawana, Delhi - DPCC	178	Moderate	PM ₁₀
	Lodhi Road, Delhi - IITM	175	Moderate	PM _{2.5}
Faridabad	Sector 30, Faridabad - HSPCB	165	Moderate	PM ₁₀
	Sector 11, Faridabad - HSPCB	151	Moderate	PM ₁₀
Gurugram	Sector-51, Gurugram - HSPCB	156	Moderate	PM _{2.5}
	Teri Gram, Gurugram - HSPCB	148	Moderate	PM ₁₀
Ghaziabad	Loni, Ghaziabad - UPPCB	236	Poor	O ₃
	Vasundhara, Ghaziabad - UPPCB	223	Poor	O ₃
Greater Noida	Knowledge Park - III, Greater Noida - UPPCB	149	Moderate	PM ₁₀
Noida	Sector - 125, Noida - UPPCB	153	Moderate	PM ₁₀
	Sector-116, Noida - UPPCB	150	Moderate	PM ₁₀