



# Central Pollution Control Board

## Air Quality Status for Delhi &NCR

Dated – April 10, 2022



### Current Air Quality Status:

#### ■ Air Quality Index (AQI) (Average of past 24 hours)

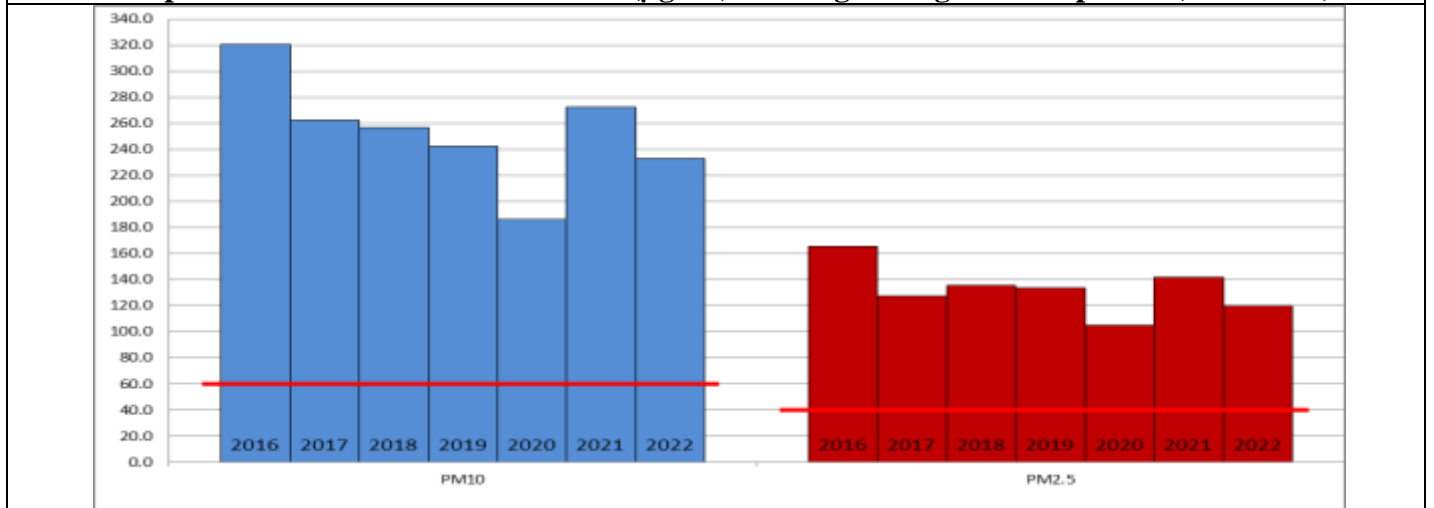
	Air Quality	AQI Value	Prominent Pollutant
Delhi	Poor	244 ↓	PM <sub>10</sub> , PM <sub>2.5</sub>
Faridabad	Poor	260 ↓	PM <sub>10</sub> , O <sub>3</sub>
Ghaziabad	Poor	300 ↑	PM <sub>10</sub>
Greater Noida	Poor	262 ↓	PM <sub>10</sub>
Gurugram	Poor	222 ↓	PM <sub>2.5</sub> , PM <sub>10</sub>
Noida	Poor	245 ↓	PM <sub>10</sub> , PM <sub>2.5</sub>

\*Data available for 13 stations in Delhi today. # ↓ ↑ arrows indicate increase/decrease as compared to value on the previous day

#### ■ Comparative status of AQI - Delhi from 01 January to 10 April 2016-2022

Category	Year	2016	2017	2018	2019	2020	2021	2022	2016	2017	2018	2019	2020	2021	2022
	No. of days	97	100	100	100	101	100	100							
Good (0–50)		0	0	0	0	1	0	0							
Satisfactory (51–100)		0	0	0	1	18	0	3	8	23	28	35	49	20	27
Moderate (101–200)		8	23	28	34	30	20	24							
Poor (201–300)		40	52	48	36	35	43	55							
Very Poor (301–400)		43	25	21	22	15	31	17	89	77	72	65	52	80	73
Severe (>401)		6	0	3	7	2	6	1							

#### Comparative status of PM<sub>2.5</sub> and PM<sub>10</sub> (µg/m<sup>3</sup>) running average – Till April 07 (2016-2022)



#### ■ Hotspots for Today:

\*Details given overleaf

Delhi	DTU, Burari Crossing, CRRM Mathura Road, Shadipur, NSIT Dwarka	Gurugram	Teri Gram, Vikas Sadan
Faridabad	Sector-11, New Industrial Town	Greater Noida	-
Ghaziabad	Sanjay Nagar, Loni	Noida	Sector-125, Sector-62

#### ■ Forecast by IITM:

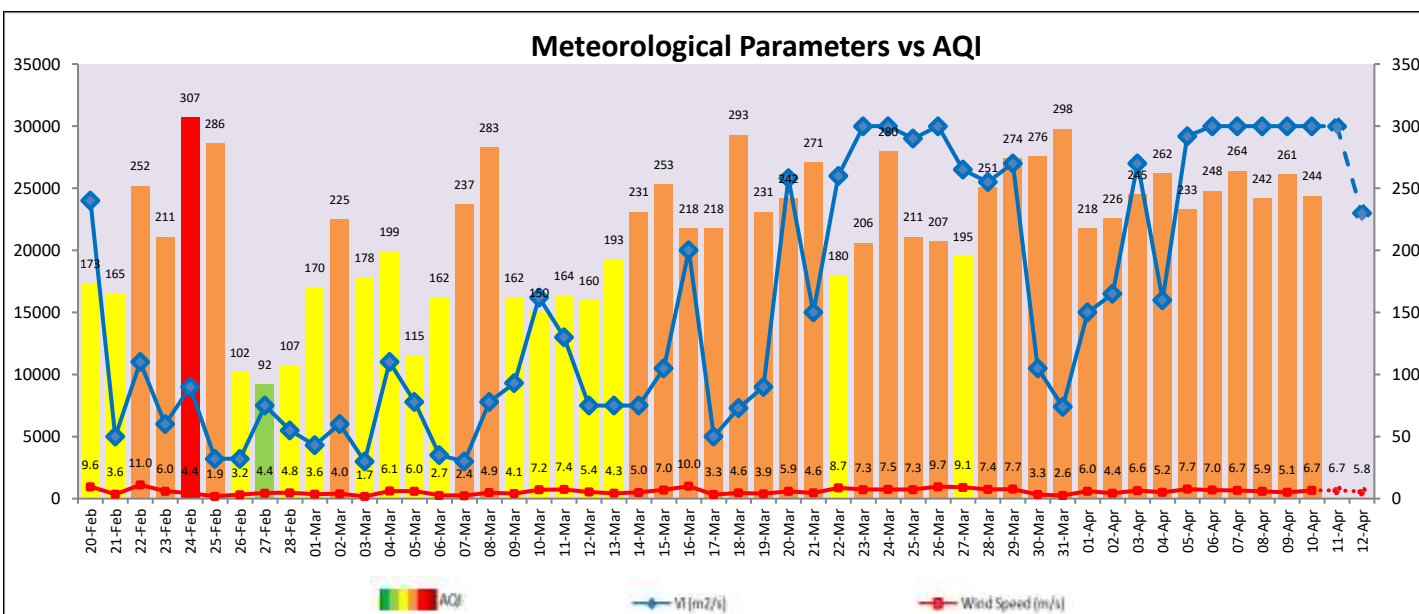
Parameters	April 11, 2022		April 12, 2022- April 13, 2022	
	Concentration	AQI Category	Concentration	AQI Category
PM <sub>10</sub>	265	Poor	295	Poor
PM <sub>2.5</sub>	92	Poor	109	Poor

## Wind Forecast for Delhi:

	Wind speed (at surface) in km/h		Wind speed (at 900 m) in km/h	Wind Direction	
	As per IMD (at 17:30 hrs.)	As per windy.com (at 16:00 hrs.)	As per windy.com (at 16:00hrs)	As per IMD (at 17:30hrs.)	As per windy.com at 900m
April 11, 2022	12	13	29	W	W
April 12, 2022	08	07	02	W	N
April 13, 2022	05	03	06	NW	SW

### IMD Alert for Tomorrow (11.04.2022):

The air quality is likely to remain in Poor category on 11.04.2022. The predominant surface wind is likely to be coming from West/Northwest direction of Delhi with wind speed 12-20 kmph, partly cloudy sky and **heat wave conditions at many places with severe heat wave conditions at isolated places** tomorrow. Ventilation index is likely to be greater than 30,000 m<sup>2</sup> /s tomorrow.



### Hotspots for Today

City	Station Name	AQI value	Air Quality	Prominent Pollutant
Delhi	DTU, Delhi - CPCB	325	Very Poor	PM <sub>10</sub>
	NSIT Dwarka, Delhi - CPCB	315	Very Poor	PM <sub>10</sub>
	Burari Crossing, Delhi - IMD	300	Poor	PM <sub>10</sub>
	Shadipur, Delhi - CPCB	293	Poor	PM <sub>10</sub>
	CRRI Mathura Road, Delhi - IMD	285	Poor	PM <sub>10</sub>
Faridabad	Sector 11, Faridabad - HSPCB	312	Very Poor	PM <sub>2.5</sub>
	New Industrial Town, Faridabad - HSPCB	305	Very Poor	PM <sub>10</sub>
Gurugram	Teri Gram, Gurugram - HSPCB	294	Poor	PM <sub>2.5</sub>
	Vikas Sadan, Gurugram - HSPCB	287	Poor	PM <sub>2.5</sub>
Ghaziabad	Loni, Ghaziabad - UPPCB	431	Severe	PM <sub>10</sub>
	Sanjay Nagar, Ghaziabad - UPPCB	290	Poor	PM <sub>10</sub>
Noida	Sector - 125, Noida - UPPCB	318	Very Poor	PM <sub>10</sub>
	Sector - 62, Noida - IMD	287	Poor	PM <sub>10</sub>