



Central Pollution Control Board

Air Quality Status for Delhi & NCR

Dated – March 10, 2022



Current Air Quality Status:

Air Quality Index (AQI) (Average of past 24 hours)

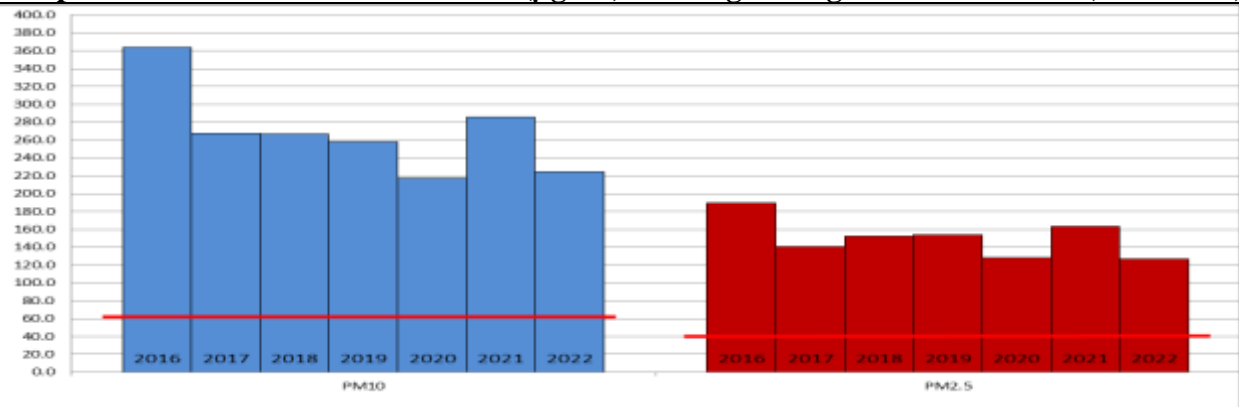
	Air Quality	AQI Value	Prominent Pollutant
Delhi	Moderate	150↓	PM ₁₀ , PM _{2.5}
Faridabad	Moderate	144↓	PM ₁₀ , O ₃
Ghaziabad	Moderate	154↓	PM ₁₀
Greater Noida	Moderate	140↓	PM ₁₀
Gurugram	Moderate	140↓	PM ₁₀ , PM _{2.5}
Noida	Moderate	111↓	PM ₁₀ , CO

*Data available for 38 stations in Delhi today. # ↓ ↑ arrows indicate increase/decrease as compared to value on the previous day

Comparative status of AQI - Delhi from 01 January to 10 March 2016-2022

Category	Year	2016	2017	2018	2019	2020	2021	2022	2016	2017	2018	2019	2020	2021	2022
		No. of days													
Good (0–50)		0	0	0	0	0	0	0							
Satisfactory (51–100)		0	0	0	1	5	0	3	3	9	12	18	18	8	22
Moderate (101–200)		3	9	12	17	13	8	19							
Poor (201–300)		19	36	33	23	35	26	29							
Very Poor (301–400)		41	24	21	21	15	29	17	66	60	57	51	52	61	47
Severe (>401)		6	0	3	7	2	6	1							

Comparative status of PM_{2.5} and PM₁₀ (µg/m³) running average – Till March 09 (2016-2022)



Hotspots for Today:

*Details given overleaf

Delhi	NSIT Dwarka, Dwarka Sector08, Bawana, Mundka, Anand Vihar	Gurugram	Sector-51, Teri Gram
Faridabad	Sector-16A, Sector-30	Greater Noida	Knowledge Park-III
Ghaziabad	Sanjay Nagar, Vasundhara	Noida	Sector-1, Sector-125

Forecast by IITM:

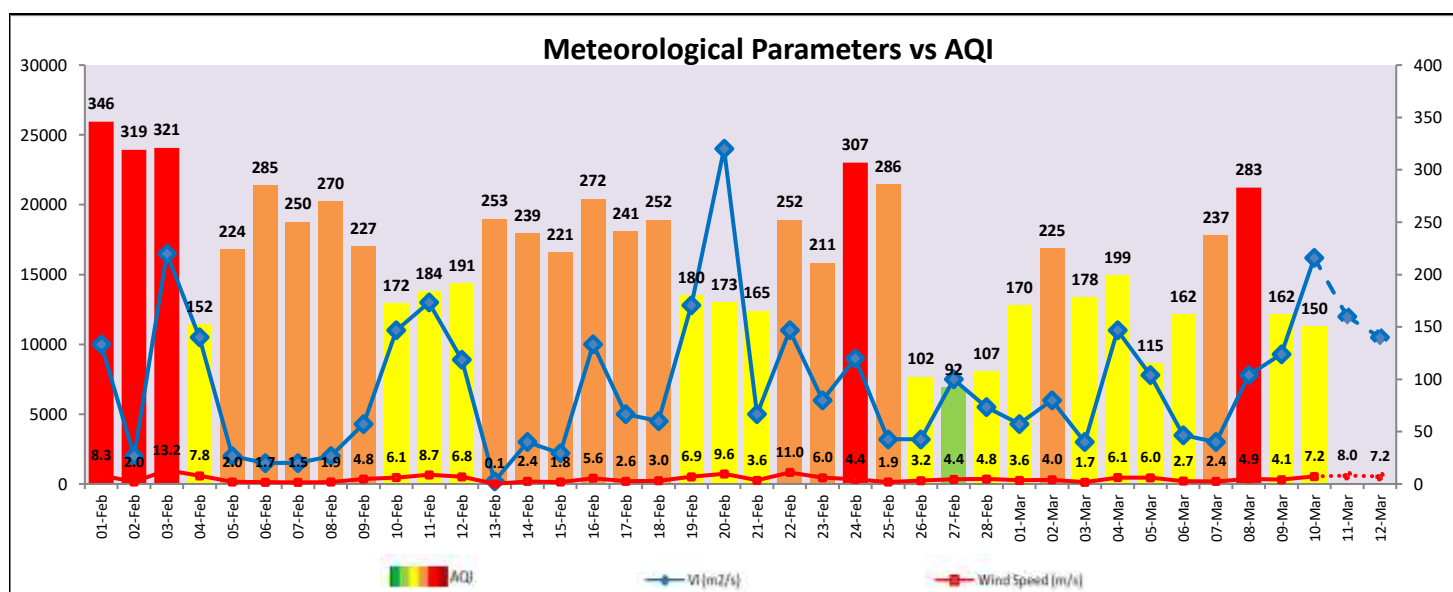
Parameters	March 11, 2022		March 12, 2022- March 13, 2022	
	Concentration	AQI Category	Concentration	AQI Category
PM ₁₀	175	Moderate	204	Moderate
PM _{2.5}	66	Moderate	77	Moderate

Wind Forecast for Delhi:

	Wind speed (at surface) in km/h		Wind speed (at 900 m) in km/h	Wind Direction	
	As per IMD (at 17:30 hrs.)	As per windy.com (at 16:00 hrs.)	As per windy.com (at 16:00hrs)	As per IMD (at 17:30hrs.)	As per windy.com at 900m
March 11, 2022	08	14	33	WNW	NW
March 12, 2022	05	11	29	NW	NW
March 13, 2022	05	09	24	NE	NW

IMD Alert for Tomorrow (11.03.2022):

The air quality is likely to remain in Moderate category on 11.03.2022 and 12.03.2022. The predominant surface wind is likely to be coming from West-Northwest direction of Delhi with wind speed 08-20 kmph, mainly clear sky and strong surface winds speed (20-30 kmph) during the day tomorrow. Ventilation index is likely to be 12000 m²/s.



Hotspots for Today

City	Station Name	AQI value	Air Quality	Prominent Pollutant
Delhi	NSIT Dwarka, Delhi - CPCB	232	Poor	PM _{2.5}
	Dwarka-Sector 8, Delhi - DPCC	213	Poor	PM ₁₀
	Anand Vihar, Delhi - DPCC	204	Poor	PM ₁₀
	Mundka, Delhi - DPCC	203	Poor	PM ₁₀
	Bawana, Delhi - DPCC	191	Moderate	PM ₁₀
Faridabad	Sector- 16A, Faridabad - HSPCB	172	Moderate	O ₃
	Sector 30, Faridabad - HSPCB	160	Moderate	PM ₁₀
Gurugram	Teri Gram, Gurugram - HSPCB	168	Moderate	PM _{2.5}
	Sector-51, Gurugram - HSPCB	143	Moderate	PM ₁₀
Ghaziabad	Sanjay Nagar, Ghaziabad - UPPCB	161	Moderate	PM ₁₀
	Vasundhara, Ghaziabad - UPPCB	159	Moderate	PM ₁₀
Greater Noida	Knowledge Park - III, Greater Noida - UPPCB	157	Moderate	PM ₁₀
Noida	Sector-1, Noida - UPPCB	136	Moderate	PM ₁₀
	Sector - 125, Noida - UPPCB	125	Moderate	PM ₁₀