



Central Pollution Control Board

Air Quality Status for Delhi & NCR

Dated – January 10, 2022



Current Air Quality Status:

Air Quality Index (AQI) (Average of past 24 hours)

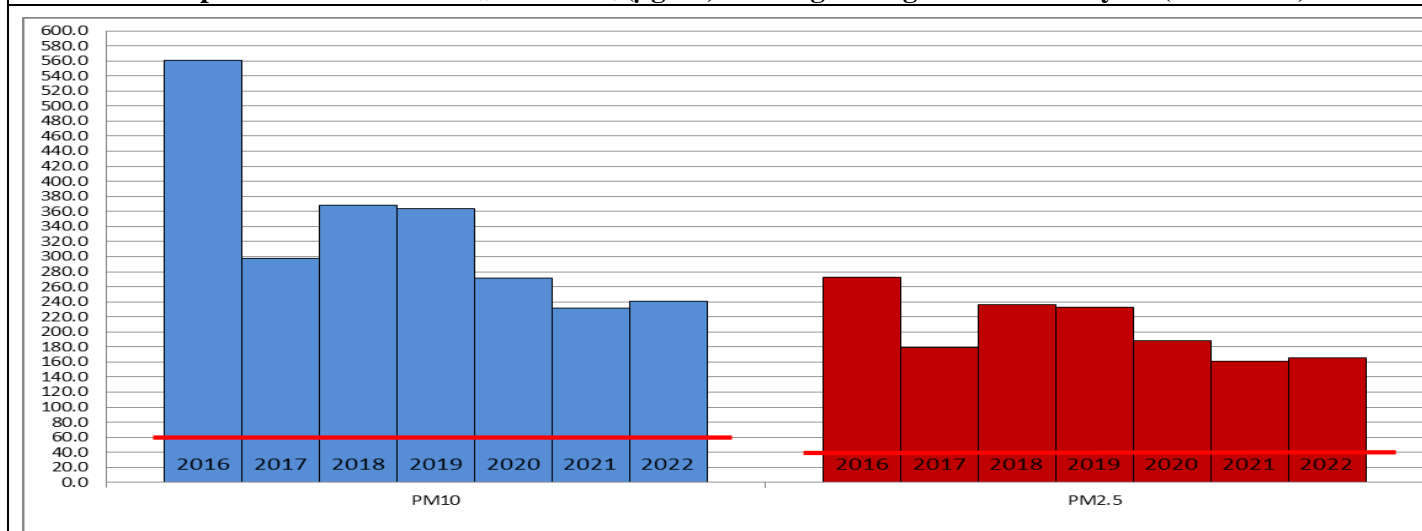
	Air Quality	AQI Value	Prominent Pollutant
Delhi	Moderate	151↑	PM _{2.5}
Faridabad	Moderate	140↑	PM _{2.5}
Ghaziabad	Moderate	116↑	PM ₁₀ , PM _{2.5}
Greater Noida	Moderate	104↑	PM _{2.5}
Gurugram	Moderate	130↑	PM ₁₀ , PM _{2.5}
Noida	Moderate	135↑	PM _{2.5}

*Data available for 33 stations in Delhi today. # ↓, ↑ arrows indicate increase/decrease as compared to value on the previous day

Comparative status of AQI - Delhi from 01 January to 10 January 2016-2022

Category	Year	2016	2017	2018	2019	2020	2021	2022	2016	2017	2018	2019	2020	2021	2022
		No. of days													
Good (0-50)		0	0	0	0	0	0	0							
Satisfactory (51-100)		0	0	0	0	0	0	2	0	0	0	0	0	2	4
Moderate (101-200)		0	0	0	0	0	2	2							
Poor (201-300)		0	3	1	2	4	4	1							
Very Poor (301-400)		7	7	7	5	4	2	4	10	10	10	10	10	8	6
Severe (>401)		3	0	2	3	2	2	1							

Comparative status of PM_{2.5} and PM₁₀ (µg/m³) running average – Till January 09 (2016-2022)



Hotspots for Today:

*Details given overleaf

Delhi	Jahangirpuri, Nehru Nagar, Anand Vihar, R.K.Puram, Vivek Vihar	Gurugram	Teri Gram, Sector-51
Faridabad	Sector-16A, New Industrial Town	Greater Noida	Knowledge Park – V
Ghaziabad	Indirapuram, Loni	Noida	Sector -116, Sector - 1

Forecast by IITM:

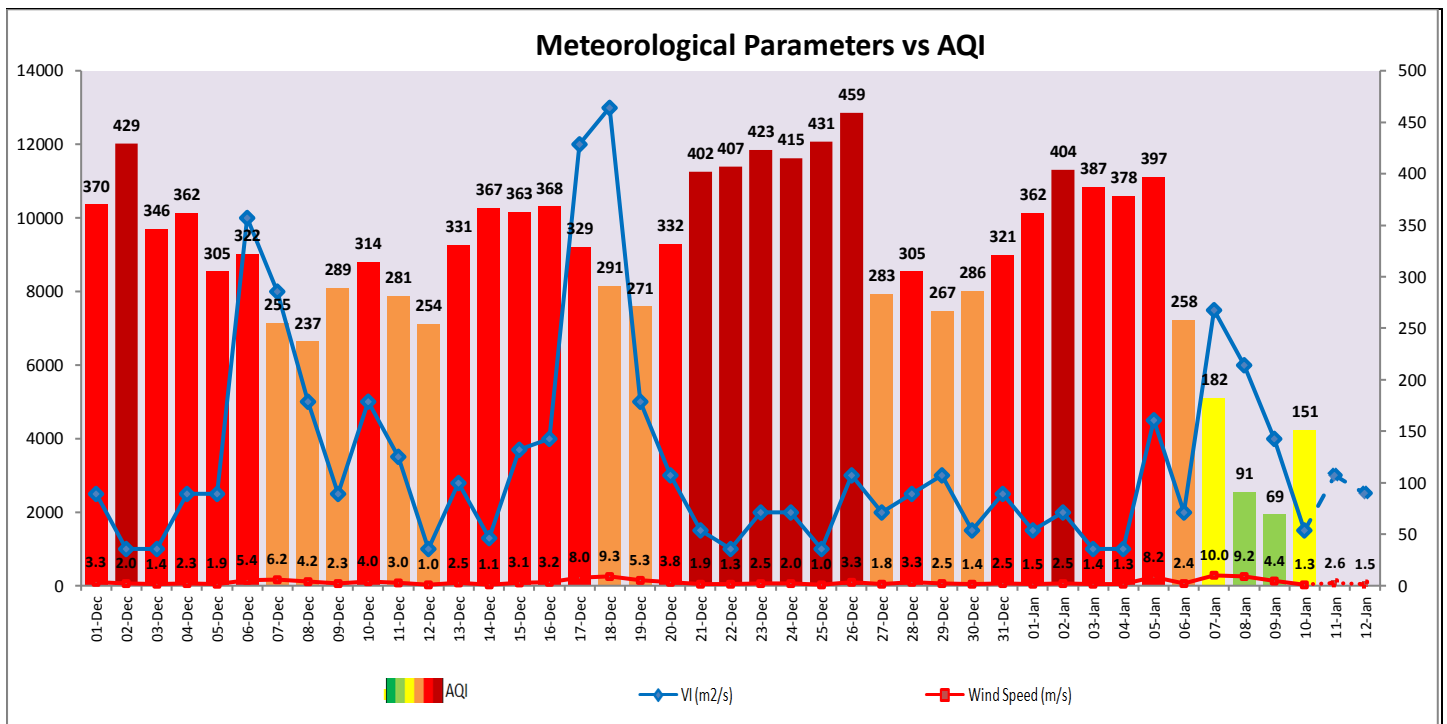
Parameters	January 11, 2022		January 12, 2022-January 13, 2022	
	Concentration	AQI Category	Concentration	AQI Category
PM ₁₀	132	Moderate	176	Moderate
PM _{2.5}	84	Moderate	112	Poor

▪ **Wind Forecast for Delhi:**

	Wind speed (at surface) in km/h		Wind speed (at 900 m) in km/h	Wind Direction	
	As per IMD (at 17:30 hrs.)	As per windy.com (at 16:00 hrs.)	As per windy.com (at 16:00hrs)	As per IMD (at 17:30hrs.)	As per windy.com at 900m
January 11, 2022	04	08	16	NNW	NW
January 12, 2022	04	05	09	N	N
January 13, 2022	06	02	06	N	N

▪ **IMD Alert for Tomorrow (11.01.2022):**

The air quality is likely to remain in Moderate to Poor category on 11.01.2022. The predominant surface wind is likely to remain calm during morning/day time, likely to be coming from North-Northwest direction of Delhi having wind speed upto 04 kmph with mainly clear sky and moderate fog in the morning. Ventilation index is likely to be 2,500 m²/s.



▪ **Hotspots for Today**

City	Station Name	AQI value	Air Quality	Prominent Pollutant
Delhi	Jahangirpuri, Delhi - DPCC	264	Poor	PM _{2.5}
	Nehru Nagar, Delhi - DPCC	220	Poor	PM _{2.5}
	Anand Vihar, Delhi - DPCC	192	Moderate	PM _{2.5}
	R K Puram, Delhi - DPCC	175	Moderate	PM _{2.5}
	Vivek Vihar, Delhi - DPCC	174	Moderate	PM _{2.5}
Faridabad	Sector- 16A, Faridabad - HSPCB	157	Moderate	PM _{2.5}
	New Industrial Town, Faridabad - HSPCB	144	Moderate	PM _{2.5}
Gurugram	Sector-51, Gurugram - HSPCB	185	Moderate	PM _{2.5}
	Teri Gram, Gurugram - HSPCB	85	Satisfactory	PM ₁₀
Ghaziabad	Loni, Ghaziabad - UPPCB	166	Moderate	PM _{2.5}
	Indrapuram, Ghaziabad - UPPCB	100	Satisfactory	PM _{2.5}
Greater Noida	Knowledge Park - V, Greater Noida - UPPCB	101	Moderate	PM _{2.5}
Noida	Sector-1, Noida - UPPCB	189	Moderate	PM _{2.5}
	Sector-116, Noida - UPPCB	99	Satisfactory	PM _{2.5}